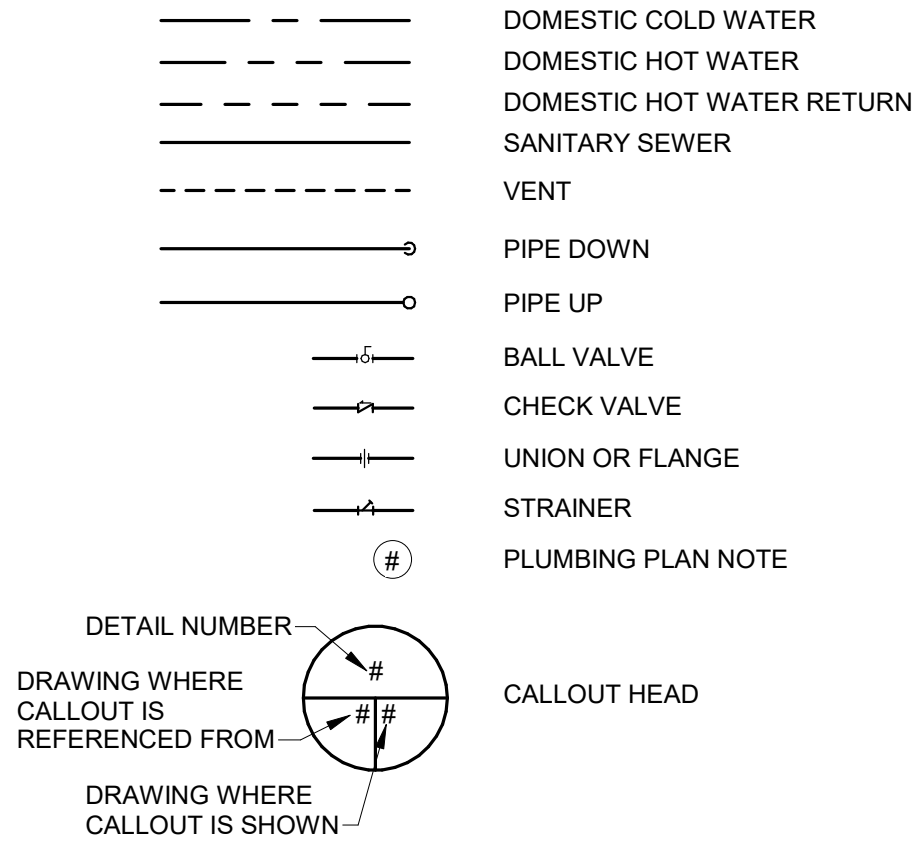


LEGEND

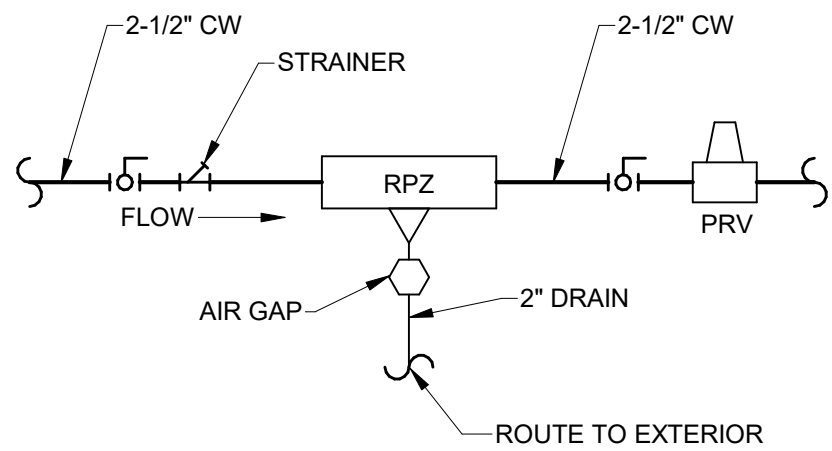


ABBREVIATIONS

ABV	ABOVE
AFF	ABOVE FINISHED FLOOR
ASJ	ALL SERVICE JACKET
CLG	CEILING
CO	CLEANOUT
CS	CIRCUIT SETTER
CV	CHECK VALVE
CW	DOMESTIC COLD WATER
DEG. F	DEGREES FAHRENHEIT
DN	DOWN
DWH	DOMESTIC WATER HEATER
EWC	ELECTRIC WATER COOLER
FCO	FLOOR CLEANOUT
FD	FLOOR DRAIN
FR	FROM
FSK	FOIL SCRIM KRAFT
GA	GAUGE
GND	GROUND
GPH	GALLONS PER HOUR
GPM	GALLONS PER MINUTE
HB	HOSE BIBB
HP	HORSEPOWER
HW	DOMESTIC HOT WATER
HWR	DOMESTIC HOT WATER RETURN
LVG	LEAVING
MAX	MAXIMUM
MFR	MANUFACTURER
MIN	MINIMUM
NC	NORMALLY CLOSED
NO	NORMALLY OPEN
NTS	NOT TO SCALE
OPG	OPENING
PDI	PLUMBING & DRAINAGE INSTITUTE
SAN	SANITARY SEWER
TPV	TRAP PRIMER VALVE
VTR	VENT THROUGH ROOF
W/	WITH
WH	WALL HYDRANT
WHA	WATER HAMMER ARRESTOR
WRT	WROUGHT

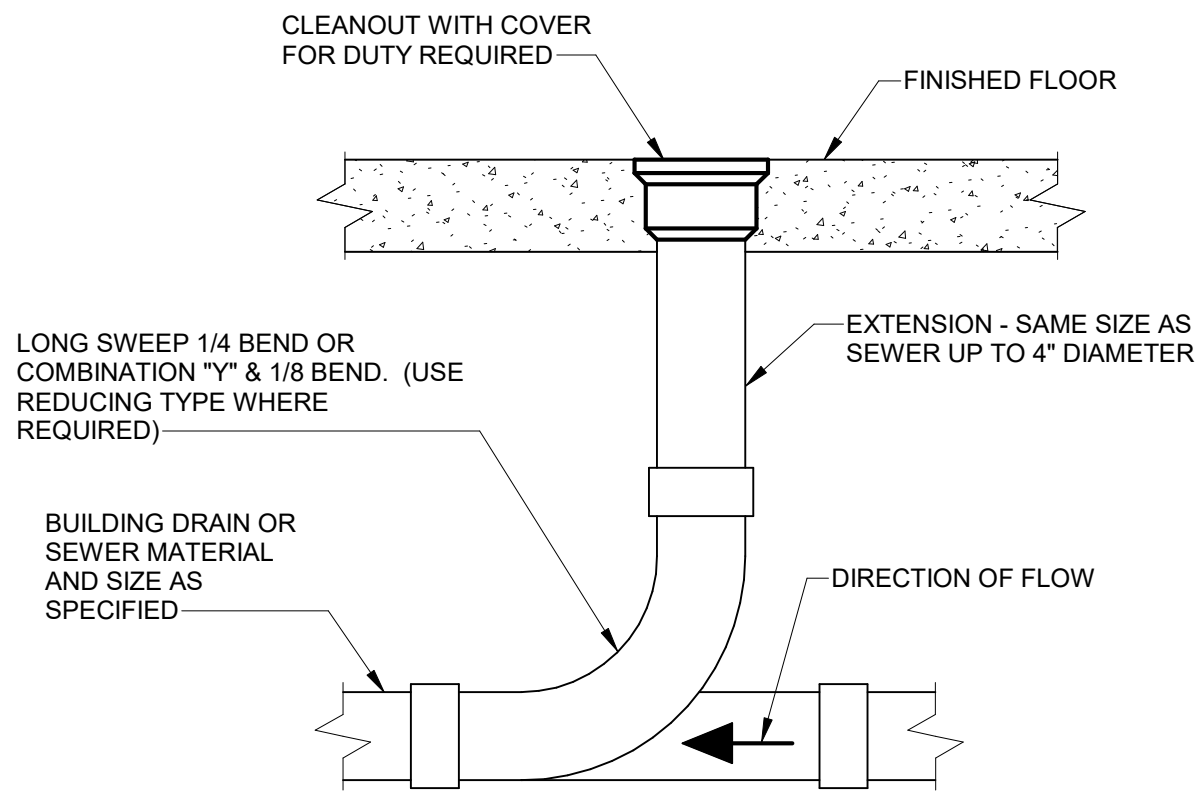
GENERAL NOTES

- A. INSTALLATION SHALL BE IN STRICT ACCORDANCE WITH THE UNIFORM STATEWIDE BUILDING CODE, INCLUDING REFERENCED CODES AND STANDARDS AND IN ACCORDANCE WITH MANDATES OF THE LOCAL BUILDING OFFICIALS.
- B. THE GENERAL ARRANGEMENT AND LOCATIONS OF PIPING, FIXTURES, ETC. ARE INDICATED BY THE DRAWINGS AND SHALL BE INSTALLED IN ACCORDANCE THEREWITH, WITH THE EXCEPTION OF SUCH CHANGES AS MAY BE REQUIRED ON ACCOUNT OF OTHER TRADES. CONTRACTOR SHALL COORDINATE WORK WITH INSTALLATION OF OTHER SUBCONTRACTORS.
- C. PLUMBING WORK SHALL BE COORDINATED WITH THE CONTRACTOR AS TO SCHEDULING, DIMENSIONING AND LOCATION OF EQUIPMENT.
- D. MAJOR ITEMS ARE SHOWN ON THE PLANS. THE CONTRACTOR SHALL BE RESPONSIBLE FOR ALL INCIDENTAL ITEMS REQUIRED TO PROVIDE A COMPLETE AND FUNCTIONAL SYSTEM.
- E. SUBSTITUTION FOR SPECIFIED ITEMS SHALL BE BORNE BY THE CONTRACTOR.
- F. ALL REQUIRED WALL OR FLOOR OPENINGS SHALL BE COORDINATED WITH THE CONTRACTOR.
- G. ALL PIPING SHALL BE ABOVE CEILING UNLESS INDICATED OTHERWISE.
- H. ALL EQUIPMENT SHALL BE WIPED CLEAN, REMOVING ALL TRACES OF OIL, DIRT, OR PAINT SPOTS.
- I. PROVIDE SUPPORTS TO RIGIDLY ATTACH ALL EQUIPMENT, APPURTENANCES AND PIPE AS REQUIRED FOR SUPPORT. PRIOR TO INSTALLATION OF HANGERS AND INSERTS, THE CONTRACTOR SHALL COORDINATE LOCATIONS AND EQUIPMENT TO MINIMIZE CONFLICTS WITH OTHER BUILDING SYSTEMS.
- J. CONTRACTOR SHALL MAKE FINAL CONNECTIONS TO ALL EQUIPMENT INDICATED TO BE FURNISHED BY OTHERS.
- K. ALL PIPE OF THE SAME SIZE SHALL BE OF THE SAME MATERIAL.
- L. SLOPE ALL DRAIN LINES 1/4 INCH PER FOOT MINIMUM FOR SIZES LESS THAN 4 INCHES. SLOPE 1/8 INCH PER FOOT SIZES 4 INCHES AND LARGER UNLESS INDICATED OTHERWISE BY INVERTS ON DWGS.
- M. SOIL, WASTE AND VENT PIPING LOCATED BELOW GRADE SHALL BE MINIMUM 2 INCHES.
- N. VENTS SHALL EXTEND 12 INCHES ABOVE ROOF. ROOF FLASHING SHALL BE COORDINATED BY THE CONTRACTOR.
- O. DOMESTIC HOT AND COLD WATER PIPING SHALL BE 1/2 INCH SIZE UNLESS INDICATED OTHERWISE.
- P. BALL VALVES MAY BE USED IN LIEU OF GATE VALVES 2 INCHES OR SMALLER.
- Q. ALL EXPOSED FIXTURE SUPPLIES AND WASTE LINES SHALL BE CHROME PLATED.
- R. INSTALL ALL FIXTURES AND EQUIPMENT PER MANUFACTURER'S RECOMMENDATIONS.



RPZ DETAIL

NOT TO SCALE



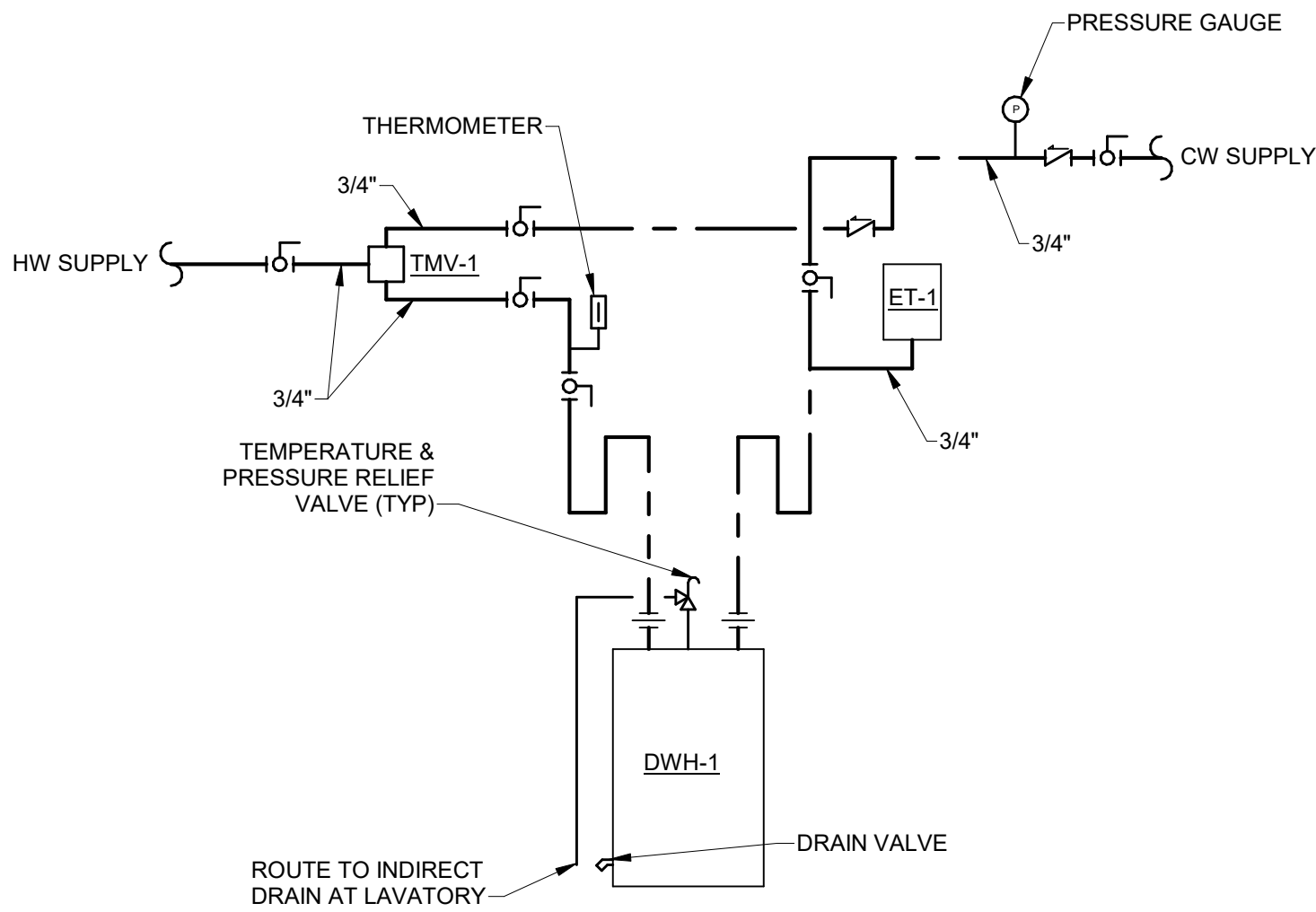
CLEANOUT DETAIL

NOT TO SCALE

PLUMBING FIXTURE SCHEDULE											
DESIGNATION	FIXTURE	MANUFACTURER & MODEL	SIZE	SUPPLY FITTINGS AND STOPS	TRAP	CARRIER	ADA COMPLIANT	REMARKS & ACCESSORIES	CONNECTION SIZES		
									WASTE	HOT	COLD
P-1	WATER CLOSET	AMERICAN STANDARD 3351.101	-	-	INTEGRAL	WALL MOUNTED	NO	FLUSH VALVE: SLOAN MODEL G2 8111-1.6 SEAT: AMERICAN STANDARD 5901.100	4"	-	1"
P-1A	WATER CLOSET	AMERICAN STANDARD 3351.101	ADA	-	INTEGRAL	WALL MOUNTED	YES	FLUSH VALVE: SLOAN MODEL G2 8111-1.6 SEAT: AMERICAN STANDARD 5901.100	4"	-	1"
P-2	URINAL	AMERICAN STANDARD 6590.001EC	ADA	-	INTEGRAL	WALL MOUNTED	YES	FLUSH VALVE: SLOAN G2 8186-1.0	2"	-	3/4"
P-3	LAVATORY	AMERICAN STANDARD 0490.011	19-1/8" ROUND	3/8" ANGLE STOPS	1 1/2" 17 GA P-TRAP	COUNTER MOUNTED	YES	FAUCET: SLOAN MODEL ETF600-LT-BA WITH GRID STRAINER.	1 1/2"	1/2"	1/2"
P-4	KITCHEN SINK	ELKAY LRAD332165PD	33" X 22"	3/8" ANGLE STOPS	1 1/2" 17 GA P-TRAP	COUNTER MOUNTED	NO	FAUCET: ZURN Z82300-XL-CP8-HS. 1.0 GPM MAX.	1 1/2"	1/2"	1/2"
P-5	JANITOR SINK	FIAT TSB3012	36" X 36" X 12"	-	3" P-TRAP	FLOOR MOUNTED	NO	WITH FIAT 830AA WITH MODEL 832AA HOSE & HOSE BRACKET, STAINLESS STEEL MOP HANGER & MODEL MSG2424 WALL GUARDS.	3"	1/2"	1/2"
P-6	ELECTRIC WATER COOLER	ELKAY LZSTL8WSLK	BI-LEVEL	3/8" ANGLE STOPS	1 1/2" 17 GA P-TRAP	WALL MOUNTED	YES	WITH BOTTLE FILLING STATION.	1 1/2"	-	1/2"

MISCELLANEOUS EQUIPMENT SCHEDULE

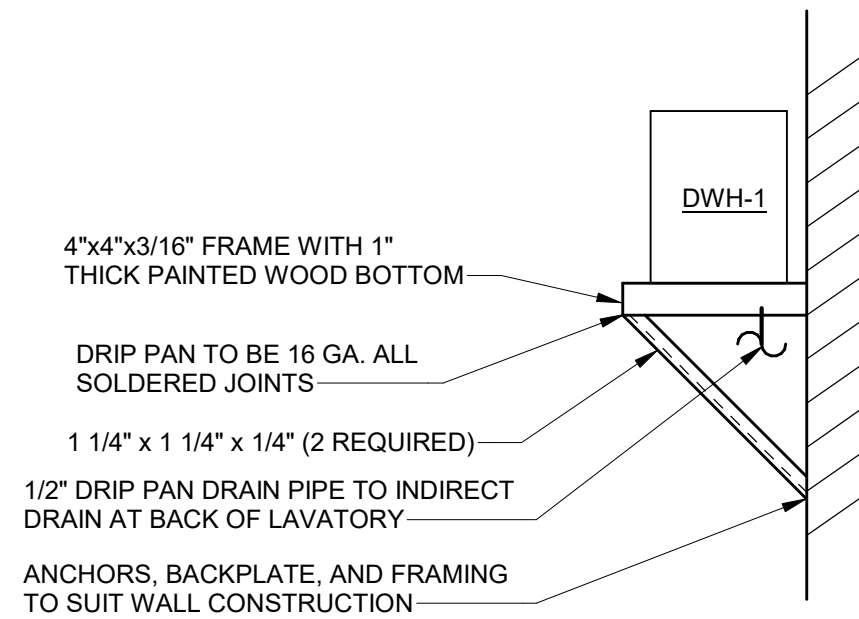
MARK	DESCRIPTION
DWH-1	DOMESTIC WATER HEATER - A.O. SMITH DEL-30 WITH 30 GALLON TANK. 4/4 KW SIMULTANEOUS INPUT (8 KW TOTAL), 32 GPH RECOVERY AT 100 DEG.F RISE, 208V/1PH/60HZ
DWH-2	INSTANTANEOUS ELECTRIC DOMESTIC WATER HEATER - CHRONOMITE SR-40/208 WITH 8320 WATT INPUT AND 0.65 GPM ACTIVATION. INSTALL PER MANUFACTURER'S RECOMMENDATIONS.
ET-1	THERMAL EXPANSION TANK - AMITROL MODEL ST-5-C WITH 0.9 GALLONS ACCEPTANCE VOLUME.
FCO	FLOOR CLEANOUT - JOSAM 55000 SERIES. LINE SIZED.
FD-1	3" FLOOR DRAIN - JOSAM 30000-A SERIES CAST IRON FLOOR DRAIN WITH TRAP SEAL INSERT.
IMB	ICE MAKER CONNECTION BOX - OATEY MODEL I2K LOW LEAD WITH PLASTIC FACEPLATE AND QUARTER-TURN BRASS BALL VALVE.
PRV	PRESSURE REDUCING VALVE - WATTS MODEL LF223 WITH STRAINER.
RPZ-1	2 1/2" REDUCED PRESSURE ZONE ASSEMBLY - WATTS MODEL LF009. LEAD FREE. PROVIDE WITH AIR GAP, STRAINER AND SHUT-OFF VALVES.
TMV-1	THERMOSTATIC MIXING VALVE - LEONARD MODEL TM-26-LF WITH 3/4" INLETS AND OUTLET.
TPV	TRAP PRIMER VALVE - PRECISION PLUMBING PRODUCTS PR-500 WITH 1/2" COPPER LINE.
WCO	WALL CLEANOUT - JOSAM 58600-CO SERIES
WH	FREEZELESS WALL HYDRANT - WOODFORD MODEL B65.
WHA-"X"	SHOCK ABSORBER, JOSAM SERIES 75000-S. MODEL NUMBER 75000-S 75001-S 75002-S 75003-S 75004-S P.D.I. AA A B C D FIXTURE UNITS 1 1-11 12-32 33-60 61-113



DOMESTIC WATER HEATER DETAIL

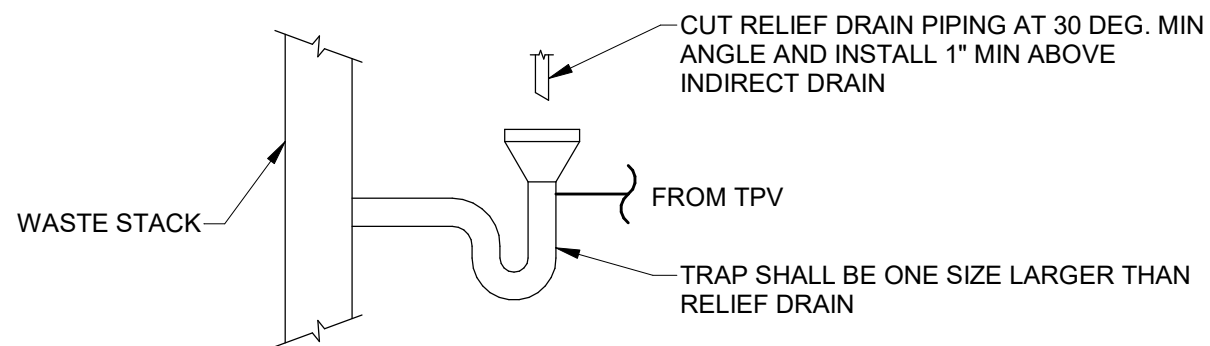
NOT TO SCALE

NOTE: SUPPORT SHELF TO BE ALL WELDED CONSTRUCTION



DOMESTIC WATER HEATER WALL MOUNTING DETAIL

NOT TO SCALE



INDIRECT DRAIN DETAIL

NOT TO SCALE

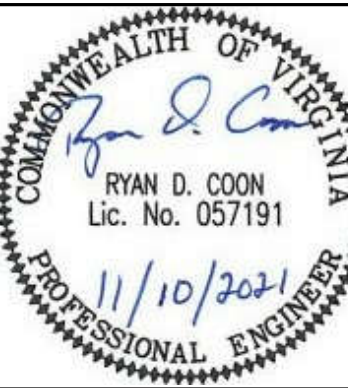


ARCHITECTURAL PARTNERS

10 9th Street
Lynchburg, Virginia 24504
p:434-846-8456
f:434-846-4534
www.architecturalpartners.com

WORKFORCE TRAINING CENTER AT
GREENFIELD CENTER
BOTETOURT COUNTY
Botetourt, Virginia PROJECT NO.: 423-277

BID SET

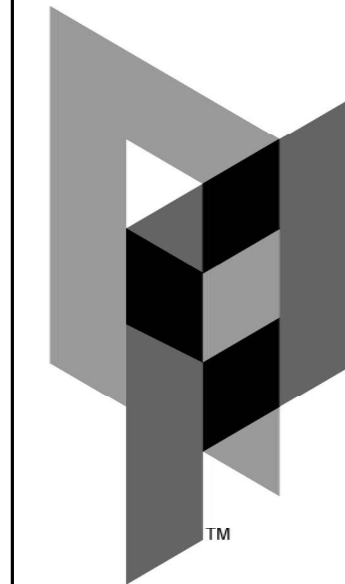


WRITTEN DIMENSIONS ON THESE DRAWINGS SHALL TAKE PRECEDENCE OVER SCALED DIMENSIONS. CONTRACTORS SHALL VERIFY AND BE RESPONSIBLE FOR ALL DIMENSIONS AND CONDITIONS ON THE JOB AND THIS OFFICE MUST BE NOTIFIED OF ANY VARIATION FROM THE DIMENSIONS AND CONDITIONS SHOWN BY THESE DRAWINGS.

DATE: 11/10/21
DESIGNED: WJC
DRAWN: WJC
CHECKED: RDC
REVISIONS:

LEGEND,
NOTES AND
ABBREVIATIONS

P0.1

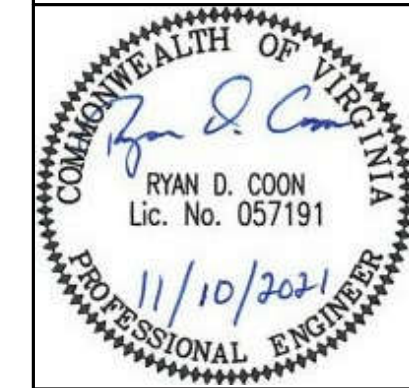


ARCHITECTURAL
PARTNERS

10 9th Street
Lynchburg, Virginia 24504
p:434-846-8456
f:434-846-4534
www.architecturalpartners.com

WORKFORCE TRAINING CENTER AT
GREENFIELD CENTER
BOTETOURT COUNTY
Botetourt, Virginia PROJECT NO.: 423-277

BID SET

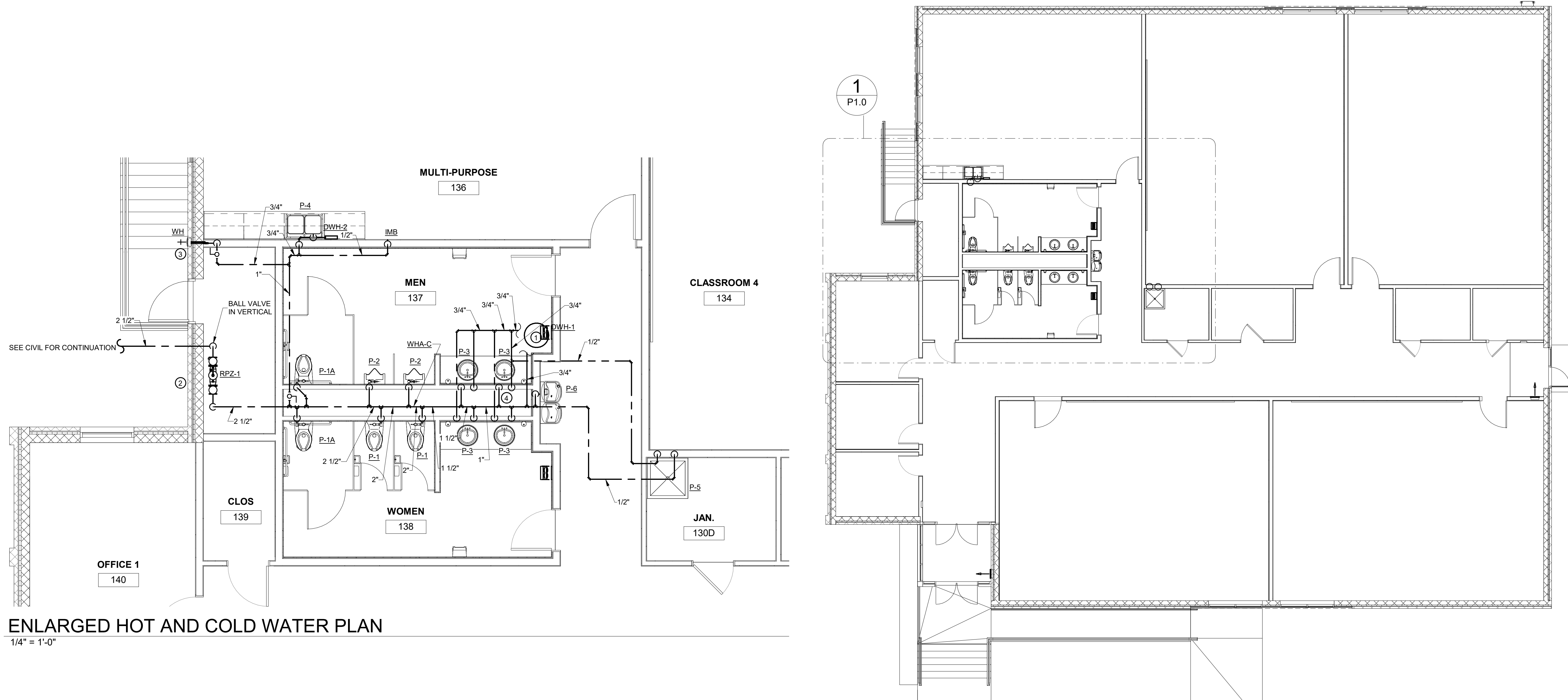


WRITTEN DIMENSIONS ON THESE DRAWINGS
SHALL TAKE PRECEDENCE OVER SCALED
DIMENSIONS. CONTRACTORS SHALL VERIFY
AND BE RESPONSIBLE FOR ALL
DIMENSIONS AND CONDITIONS ON THE JOB
AND THIS OFFICE MUST BE NOTIFIED OF
ANY VARIATION FROM THE DIMENSIONS AND
CONDITIONS SHOWN BY THESE DRAWINGS.

DATE: 11/10/21
DESIGNED: RDC
DRAWN: RDC
CHECKED: RDC
REVISIONS:

PLUMBING
HOT AND
COLD WATER
PLANS

P1.0

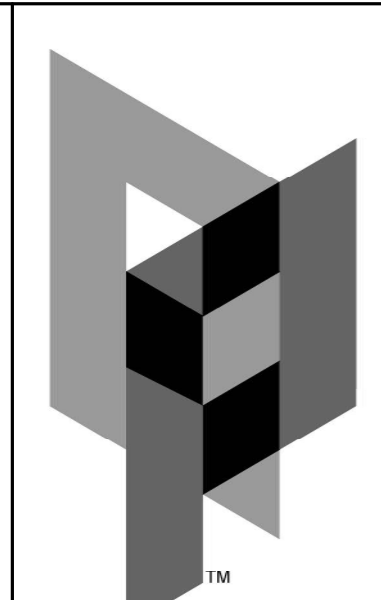


 ENLARGED HOT AND COLD WATER PLAN
1/4" = 1'-0"

 HOT AND COLD WATER PLAN
1/8" = 1'-0"

PLAN NOTES

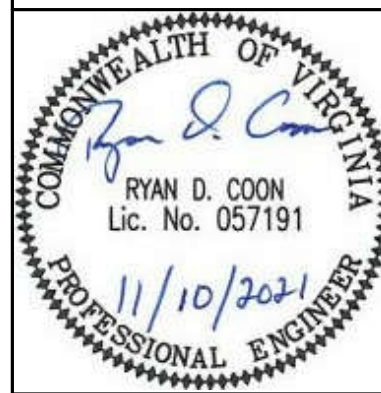
- 1 MOUNT DWH-1 ABOVE CEILING IN MEN'S ROOM. SEE MOUNTING DETAIL. ROUTE RELIEF DRAIN AND DRIP PAN DRAIN TO INDIRECT DRAIN AT LAVATORY. SEE SANITARY AND VENT PLAN.
- 2 ROUTE DRAIN FROM RPZ-1 THROUGH EXTERIOR WALL AND DOWN TO GRADE. TERMINATE AT SPLASHBLOCK IN THIS LOCATION. SEAL WALL PENETRATION WATER-TIGHT.
- 3 MOUNT WALL HYDRANT AT HEIGHT SUITABLE FOR USE.
- 4 PROVIDE TPV IN THIS LOCATION. CONNECT TO INDIRECT DRAIN.



ARCHITECTURAL
PARTNERS
10 9th Street
Lynchburg, Virginia 24504
p:434-846-8456
f:434-846-4534
www.architecturalpartners.com

WORKFORCE TRAINING CENTER AT
GREENFIELD CENTER
BOTETOURT COUNTY
Botetourt, Virginia PROJECT NO.: 423-277

BID SET



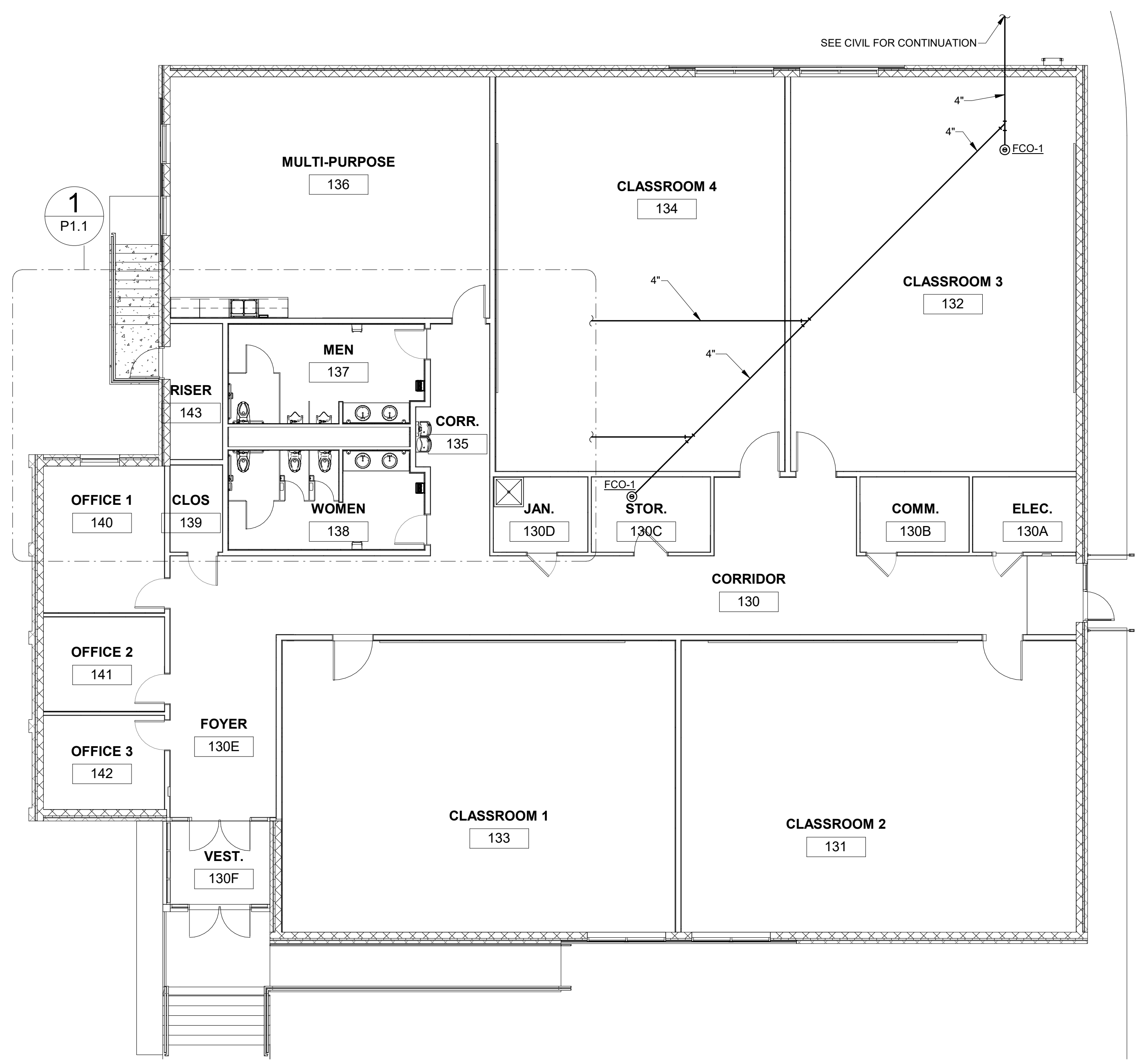
WRITTEN DIMENSIONS ON THESE DRAWINGS
SHALL TAKE PRECEDENCE OVER SCALED
DIMENSIONS. CONTRACTORS SHALL VERIFY
AND BE RESPONSIBLE FOR ALL
DIMENSIONS AND CONDITIONS ON THE JOB
AND THIS OFFICE MUST BE NOTIFIED OF
ANY VARIATION FROM THE DIMENSIONS AND
CONDITIONS SHOWN BY THESE DRAWINGS.

DATE: 11/10/21
DESIGNED: RDC
DRAWN: RDC
CHECKED: RDC
REVISIONS:

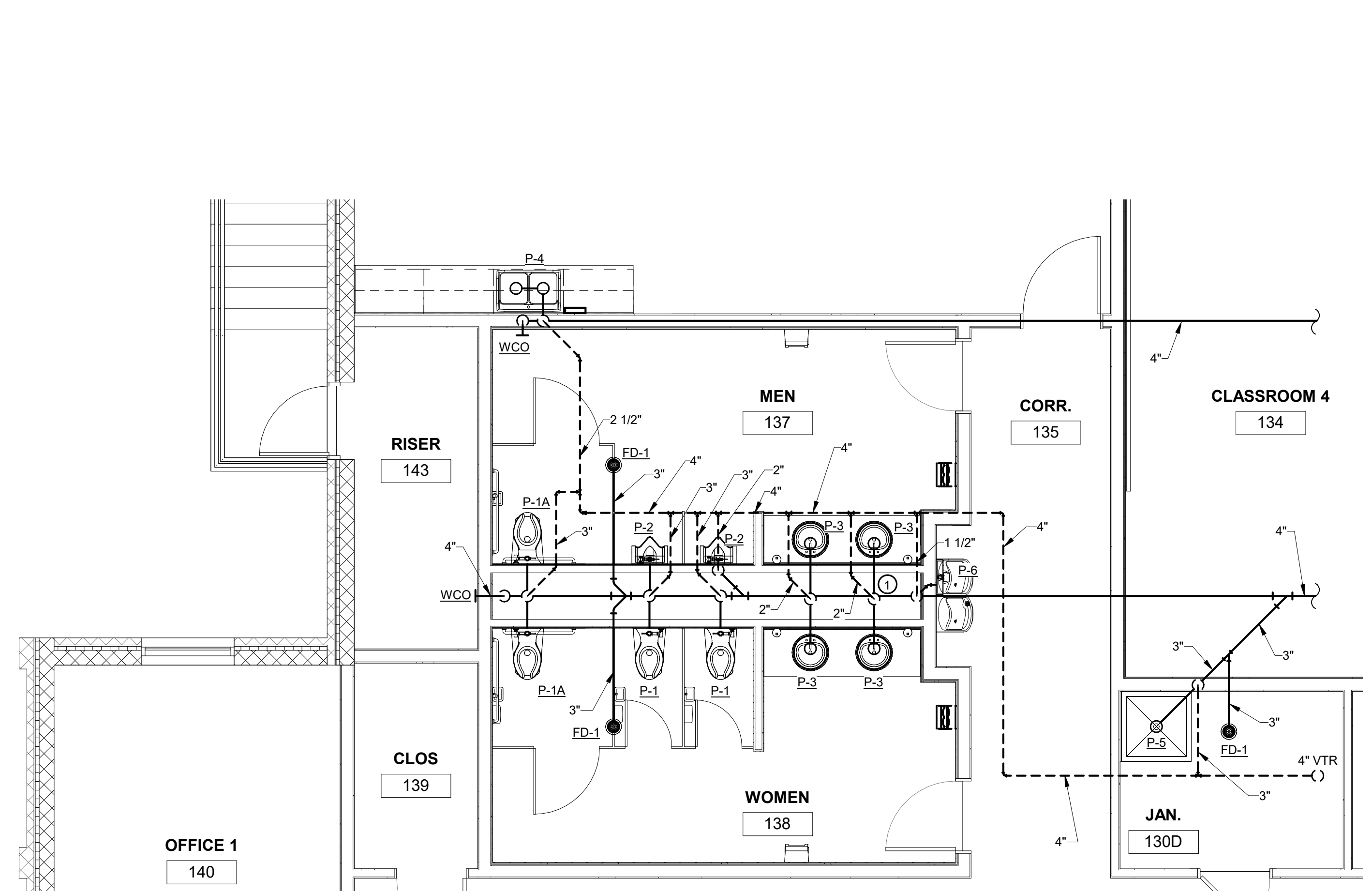
PLUMBING
SANITARY
AND VENT
PLANS

P1.1

© 2018 ARCHITECTURAL PARTNERS, P.C.



SANITARY & VENT PLAN
1/8" = 1'-0"

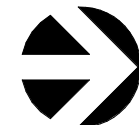


1 ENLARGED SANITARY AND VENT PLAN
P1.1 1/4" = 1'-0"

PLAN NOTES

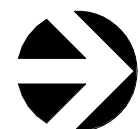
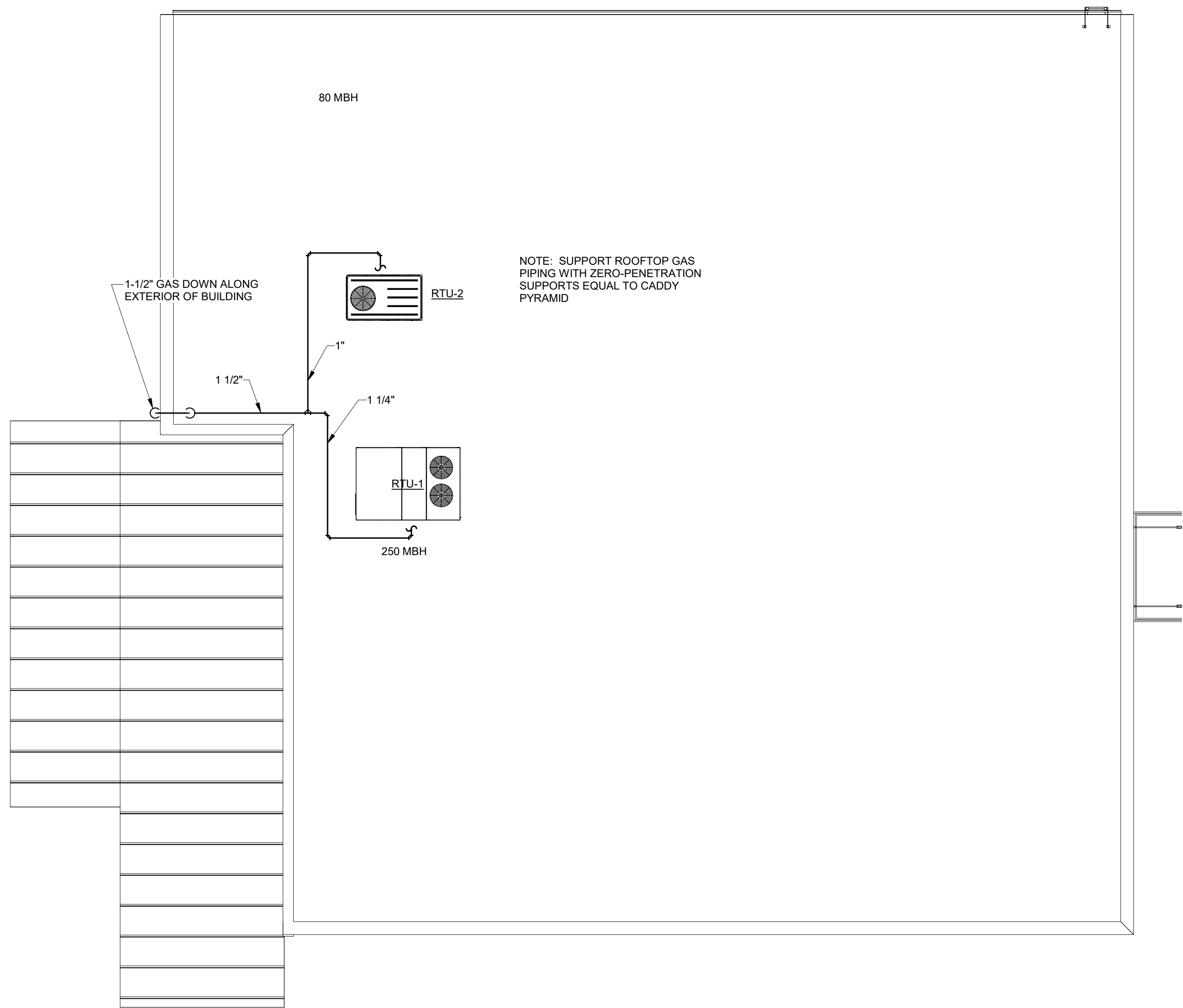
- ① INDIRECT DRAIN IN THIS LOCATION FOR DWH-1. SEE DETAIL.

11/10/2021 12:06:59 PM



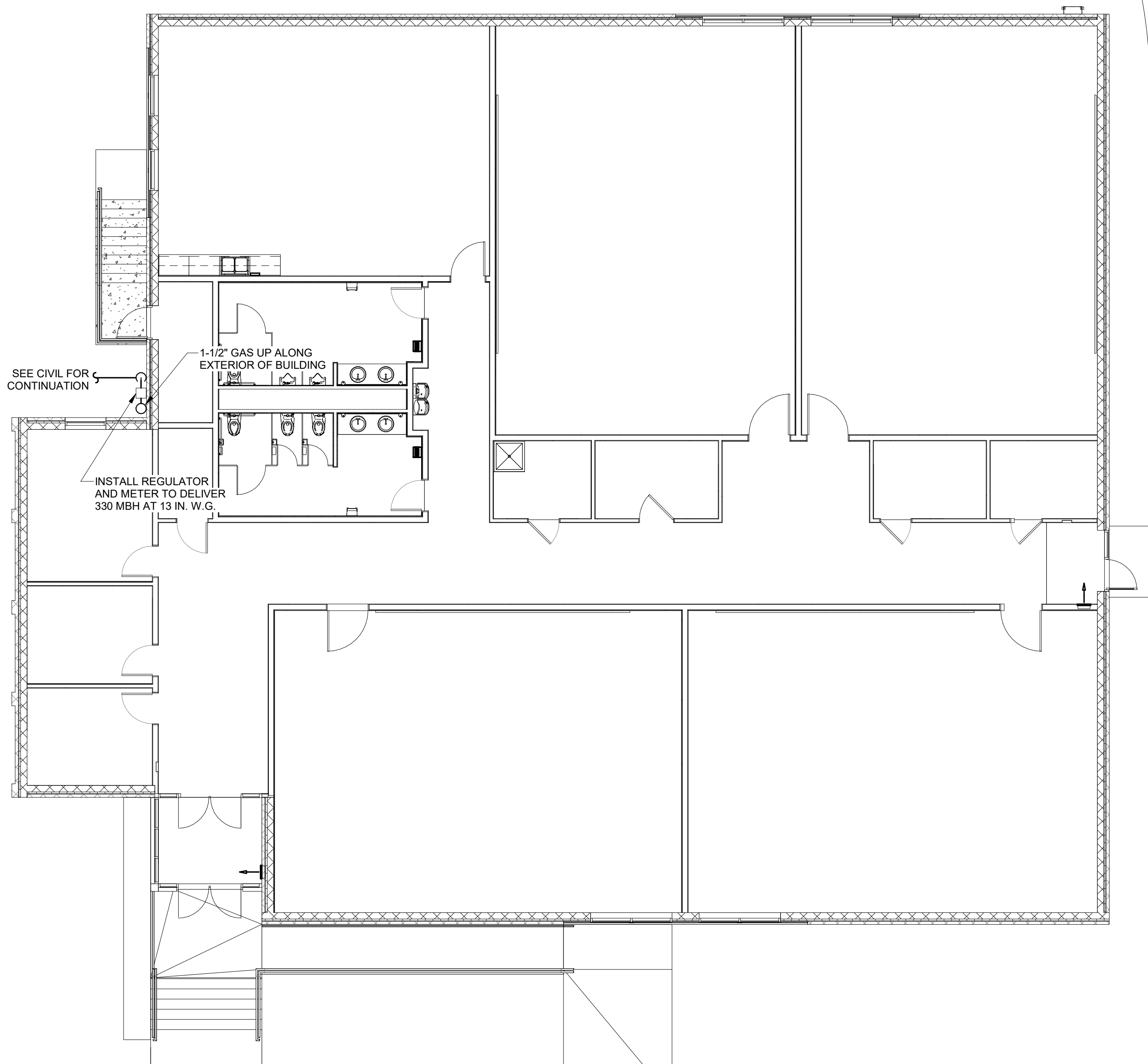
NATURAL GAS ROOF PLAN

1/8" = 1'-0"



NATURAL GAS FLOOR PLAN

1/8" = 1'-0"

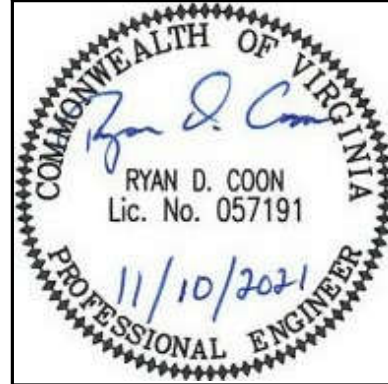


ARCHITECTURAL PARTNERS

10 9th Street
Lynchburg, Virginia 24504
p:434-846-8456
f:434-846-4534
www.architecturalpartners.com

WORKFORCE TRAINING CENTER AT
GREENFIELD CENTER
BOTETOURT COUNTY
Botetourt, Virginia PROJECT NO.: 423-277

BID SET



WRITTEN DIMENSIONS ON THESE DRAWINGS SHALL TAKE PRECEDENCE OVER SCALED DIMENSIONS. CONTRACTORS SHALL VERIFY AND BE RESPONSIBLE FOR ALL DIMENSIONS AND CONDITIONS ON THE JOB AND THIS OFFICE MUST BE NOTIFIED OF ANY VARIATION FROM THE DIMENSIONS AND CONDITIONS SHOWN BY THESE DRAWINGS.

DATE: 11/10/21
DESIGNED: RDC
DRAWN: RDC
CHECKED: RDC
REVISIONS:

PLUMBING NATURAL GAS PLANS



MASTER ENGINEERS & DESIGNERS

904 Lakeside Drive, Lynchburg, VA 24501
434-846-1350 Fax: 434-846-1351

P1.2