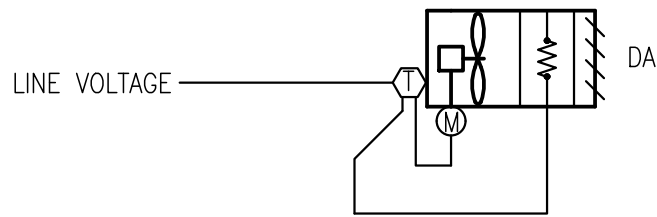


ABBREVIATIONS

A	AMPERES
AFF	ABOVE FINISHED FLOOR
AHU	AIR HANDLING UNIT
AMSL	ABOVE MEAN SEA LEVEL
BTU	BRITISH THERMAL UNIT
BTUH	BRITISH THERMAL UNITS PER HOUR
CC	COOLING COIL
CFM	CUBIC FEET PER MINUTE
CU FT	CUBIC FEET
CUH	CABINET UNIT HEATER
CU IN	CUBIC INCHES
D	DRAIN LINE
DB	DRY BULB
DWG	DRAWING
EAT	ENTERING AIR TEMPERATURE
EF	EXHAUST FAN
EL	ELEVATION
ELEC	ELECTRIC
EWB	ENTERING WET BULB TEMPERATURE
EXH	EXHAUST AIR
F	FILTER
°F	DEGREES FAHRENHEIT
FG	FINISHED GRADE
FF	FINISHED FLOOR
FLA	FULL LOAD AMPERES
FPM	FEET PER MINUTE
FPS	FEET PER SECOND
FT	FEET
HP	HORSEPOWER
HR	HOUR
HZ	FREQUENCY
IN	INCH OR INCHES
KW	KILOWATT
L	LENGTH
LAT	LEAVING AIR TEMPERATURE
LBS	POUNDS
LDB	LEAVING DRY BULB TEMPERATURE
LWB	LEAVING WET BULB
MAX	MAXIMUM
MBH	BRITISH THERMAL UNITS/HOUR, THOUSANDS
MIN	MINIMUM
NO.	NUMBER
NOM	NOMINAL
NTS	NOT TO SCALE
OA	OUTSIDE AIR
PD	PRESSURE DROP
PH	PHASE
RHG	REFRIGERANT HOT GAS DISCHARGE
RL	REFRIGERANT LIQUID
RM	ROOM
RPM	REVOLUTIONS PER MINUTE
SP	STATIC PRESSURE
SPEC	SPECIFICATION
TEMP	TEMPERATURE
TYP	TYPICAL
UH	UNIT HEATER
W	WIDTH
W/	WITH
W/O	WITHOUT



UNIT HEATER CONTROL DIAGRAM

NO SCALE

UNIT HEATER – (TYPICAL OF 1)

- ON A CALL FOR HEATING FROM THE UNIT MOUNTED THERMOSTAT, THE UNIT HEATER FAN SHALL START AND THE HEATING COIL SHALL ENERGIZE.
- WHEN THE UNIT MOUNTED THERMOSTAT IS SATISFIED, THE HEATING COIL SHALL DE-ENERGIZE AND THE FAN SHALL STOP.

ELECTRIC UNIT HEATER SCHEDULE: SPECIFICATION SECTIONS 238239, 16

UNIT NO.	SERVING	UNIT TYPE	TOTAL CAPACITY BTUH	AIR DATA		ELECTRIC DATA				MOTOR DATA			SELECTION BASED ON		REMARKS
				CFM	EAT °F	KW	FLA	VOLT	PH	HP	VOLT	PH	MANUFACTURER	MODEL	
UH-1	ADMIN ROOM	HORIZONTAL	9729	400	55	3.3	13.7	240	1	1/125	240	1	TRANE	UHEC031B0C0	SEE NOTE 3 BELOW. PROVIDE WITH DISCONNECT AND UNIT MOUNTED THERMOSTAT

NOTE 3: UNIT CAPACITY BTUH IS CORRECTED FOR ALTITUDE OF 4000 FT AMSL.

FAN SCHEDULE: SPECIFICATION SECTION 233423

UNIT NO.	SERVING	TYPE	CFM	WHEEL DIA, IN.	DRIVE	BLADE TYPE	TOTAL STATIC IN. WG.	FAN RPM	MOTOR DATA				SELECTION BASED ON		REMARKS
									HP	RPM	VOLT	PH	MANUFACTURER	MODEL	
EF-1	AERATION BLOWER ROOM	SIDEWALL	125	8	DIRECT	PROPELLER	0.25"	1550	1/30	1550	120	1	GREENHECK	SE1-8-440-D	PROVIDE SPEED CONTROLLER & REMOTE THERMOSTAT
EF-2	EXISTING BUILDING TOILET ROOM	SIDEWALL	100	8	DIRECT	PROPELLER	0.25"	1550	1/30	1550	120	1	GREENHECK	SE1-8-440-D	PROVIDE SPEED CONTROLLER. ON / OFF CONTROL VIA LIGHT SWITCH

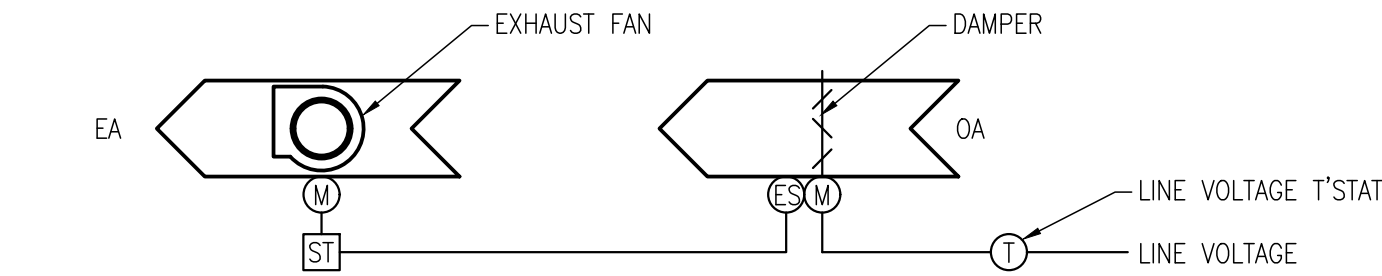
SPLIT SYSTEM AIR HANDLING UNIT SCHEDULE: SPECIFICATION SECTION 28126																			
UNIT NO.	SERVING	OA CFM	SUPPLY FAN DATA				COOLING DATA					UNIT ELECTRIC DATA				SELECTION BASED ON		REMARKS	
			CFM	ESP In. H2O	HP	RPM	TOTAL CAPACITY BTUH	SENSIBLE CAPACITY BTUH	EAT °F		SEER @ARI	VOLT	PH	MCA	MOCP	MANUFACTURER	MODEL		
AHU-1	ELECTRIC ROOM	0	286	0	110w	MED	10,363	10363	80	66.6	13	120	1	1.2	15	MITSUBISHI	MS-A12WA	MR. SLIM, SEE NOTE 2 BELOW	

NOTE 2: CAPACITY BTUH IS CORRECTED FOR AN ALTITUDE OF 4000 FT. AMSL.

SPLIT SYSTEM AIR COOLED CONDENSING UNIT SCHEDULE: SPECIFICATION SECTION 238126

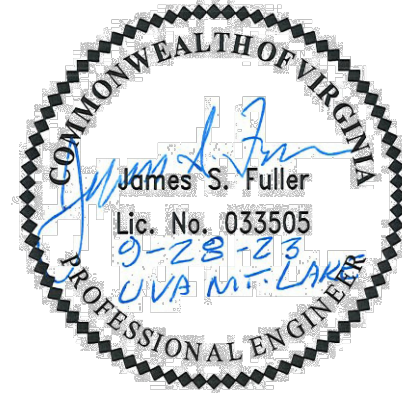
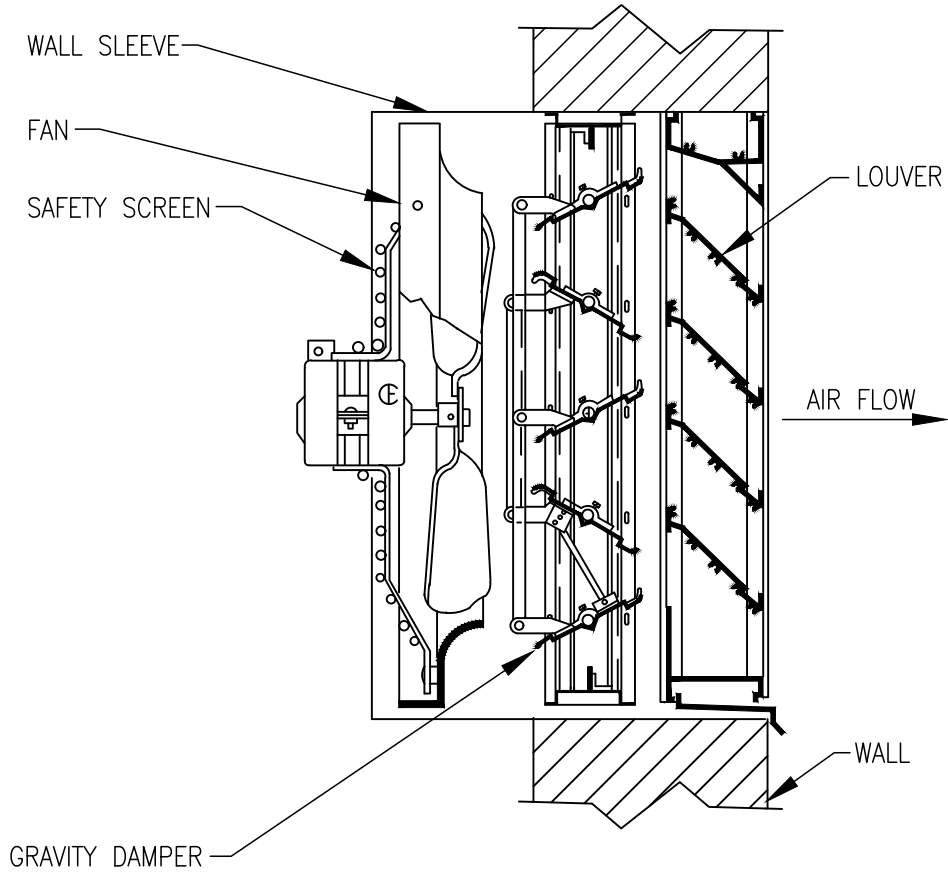
UNIT NO.	SERVING	UNIT DATA			FAN MOTOR(S)		COMPRESSOR(S)			UNIT ELECTRIC DATA				SELECTION BASED ON		REMARKS
		CAPACITY BTUH	COND. EAT °F	REFRIG. TYPE	NO.	HP	NO.	LRA	RLA	MCA	MOCAP	VOLT	PH	MANUFACTURER	MODEL	
CU-1	AHU-1	10,363	95	410	1	106W	1	56	10.82	16	20	120	1	MITSUBISHI	MU-A12WA	MR. SLIM, SEE NOTE 1 BELOW

NOTE 1: CAPACITY BTUH IS CORRECTED FOR ALTITUDE OF 4000 FT. AMSL.



EXHAUST FAN – THERMOSTAT (TYPICAL OF 1)

- ON A CALL FROM THE LINE VOLTAGE SPACE THERMOSTAT (ADJUSTABLE, INITIALLY SET FOR 80°F), THE OA DAMPER SHALL OPEN. WHEN THE OA DAMPER IS PROVEN OPEN VIA END SWITCH, THE EXHAUST FAN SHALL START.
- WHEN THE LINE VOLTAGE THERMOSTAT IS SATISFIED, THE EXHAUST FAN SHALL STOP AND THE OA DAMPER SHALL CLOSE.



THIS DRAWING PREPARED AT THE
CORPORATE OFFICE
1001 Boulders Parkway, Suite 300 | Richmond, VA 23225
TEL 804-200-6300 FAX 804-586-1016 www.timmons.com

JS FULLER
ENGINEERING

9702 GAYTON ROAD #238
RICHMOND, VA 23238
(804) 692-2027

DATE	REVISION DESCRIPTION	
	REVISED BID PLANS PER CUBO REVIEW	REVISED BID PLANS PER CUBO REVIEW
09/15/2023		
09/28/2023		

DATE	09/28/2023
DRAWN BY	JSF
DESIGNED BY	JSF
CHECKED BY	JSF
SCALE	AS NOTED

TIMMONS GROUP

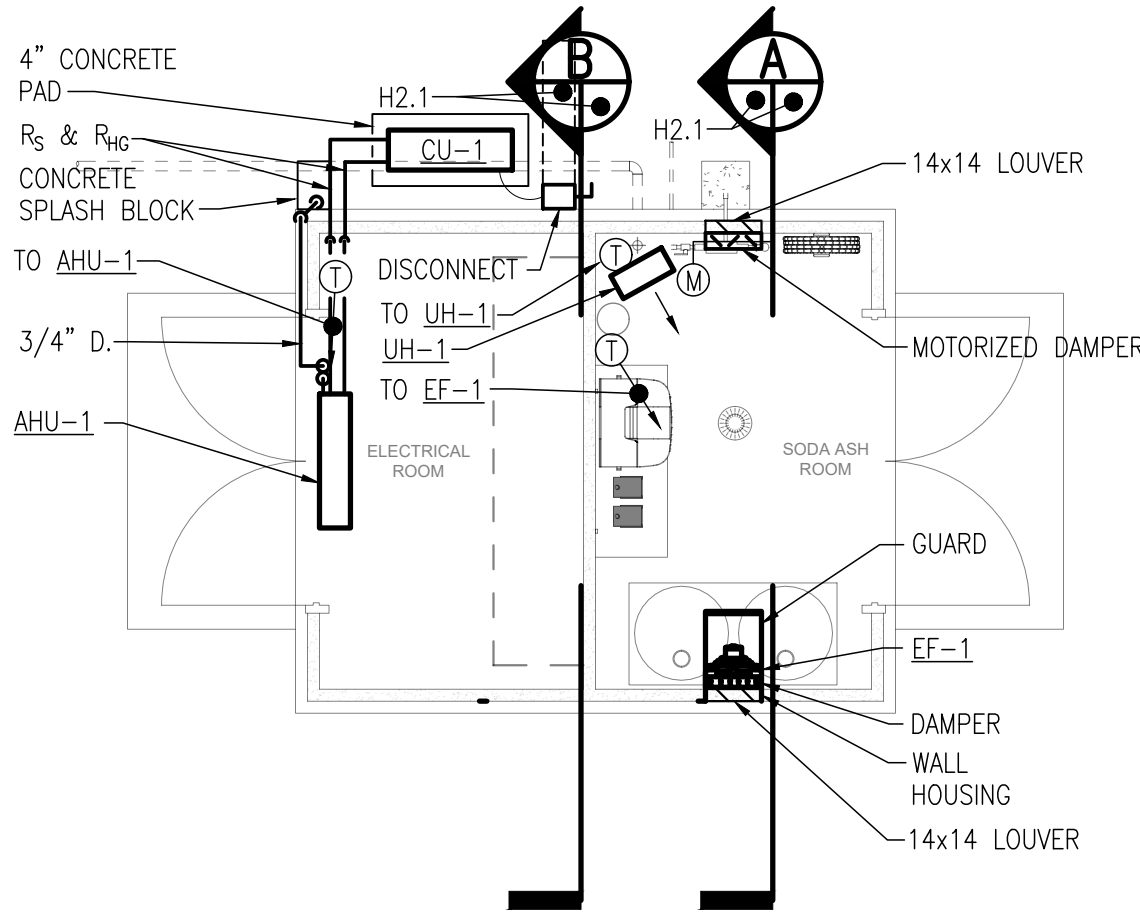
MOUNTAIN LAKE WASTEWATER TREATMENT PLANT

LEGEND, ABBREVIATIONS, SCHEDULES & DETAILS

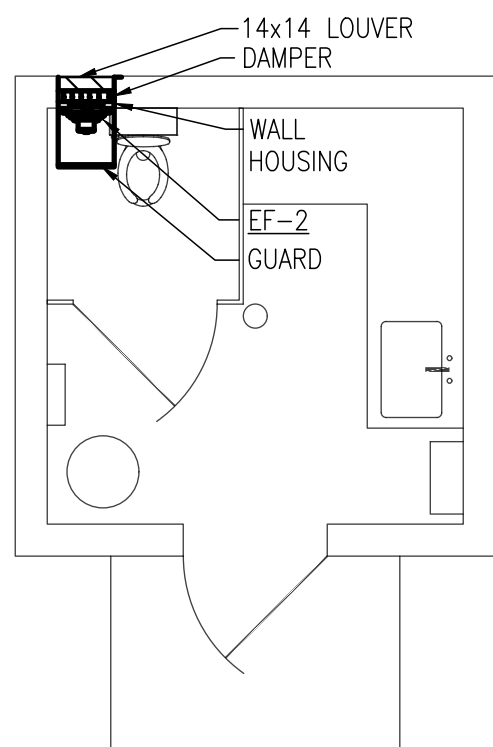
JOB NO.	53153.001
SHEET NO.	H1.1

These plans and associated documents are the exclusive property of TIMMONS GROUP and may not be reproduced in whole or in part and shall not be used for any purpose whatsoever, inclusive, but not limited to construction, bidding, and/or construction staking without the express written consent of TIMMONS GROUP.

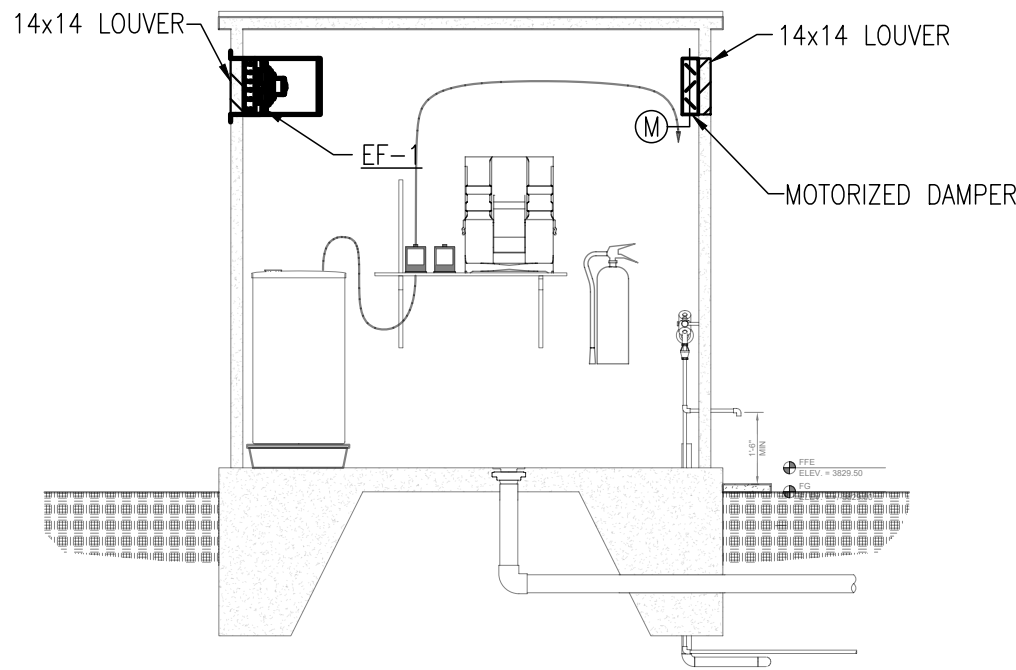
C:\Users\jimfu\Documents\JS Fuller\Projects\22006 Mt. Lake WTP\Mechanical\Drawings\06M001.dwg | Plotted by James S. Fuller



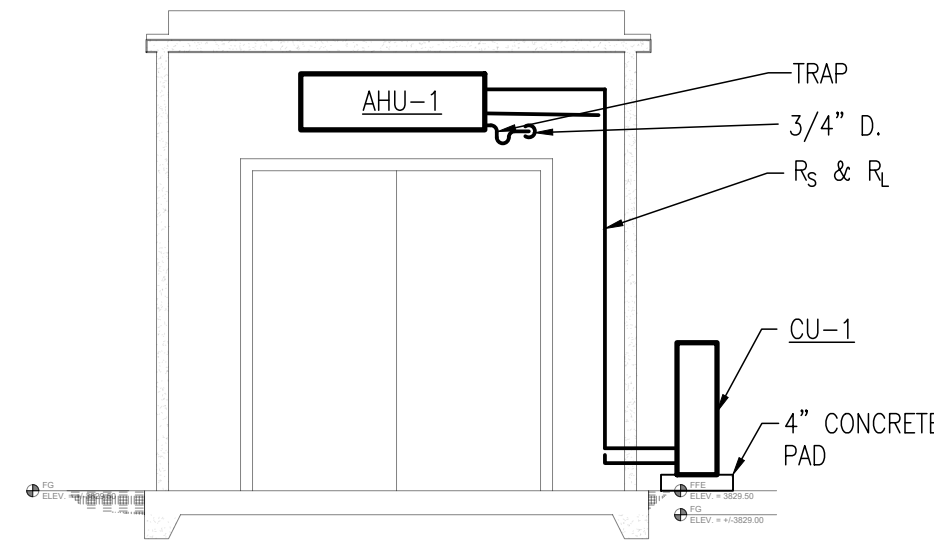
1 ADMIN / ELECTRICAL BUILDING
SCALE: 1/4" = 1'-0"



1 EXISTING CHEMICAL BUILDING
SCALE: 1/4" = 1'-0"



A SECTION
H2.1/H2.1 SCALE: 1/4" = 1'-0"



B SECTION
H2.1/H2.1 SCALE: 1/4" = 1'-0"



NOTES

ONLY EPA CERTIFIED TECHNICIANS WILL BE ALLOWED TO MAINTAIN, SERVICE, REPAIR, AND DISPOSE OF EQUIPMENT CONTAINING REFRIGERANT. TECHNICIANS MUST FOLLOW THE REQUIRED PRACTICES PERTAINING TO MAINTENANCE, SERVICE, REPAIR, AND DISPOSAL OF REFRIGERATION AND AIR CONDITIONING EQUIPMENT PROVIDED IN 40 CFR 82 SUBPART F ON REFRIGERANT RECYCLING AND EMISSIONS REDUCTIONS.

JSFULLER
ENGINEERING

9702 GAYTON ROAD #238
DALLAS, TEXAS 75236
(817) 452-2236
(817) 452-2027

THIS DRAWING PREPARED AT THE

CORPORATE OFFICE

1001 Boulders Parkway, Suite 300 | Richmond, VA 23225
TEL 804-203-0300 FAX 804-366-1016 www.timmons.com

MOUNTAIN LAKE WASTEWATER TREATMENT PLANT

HVAC FLOOR PLANS & SECTIONS

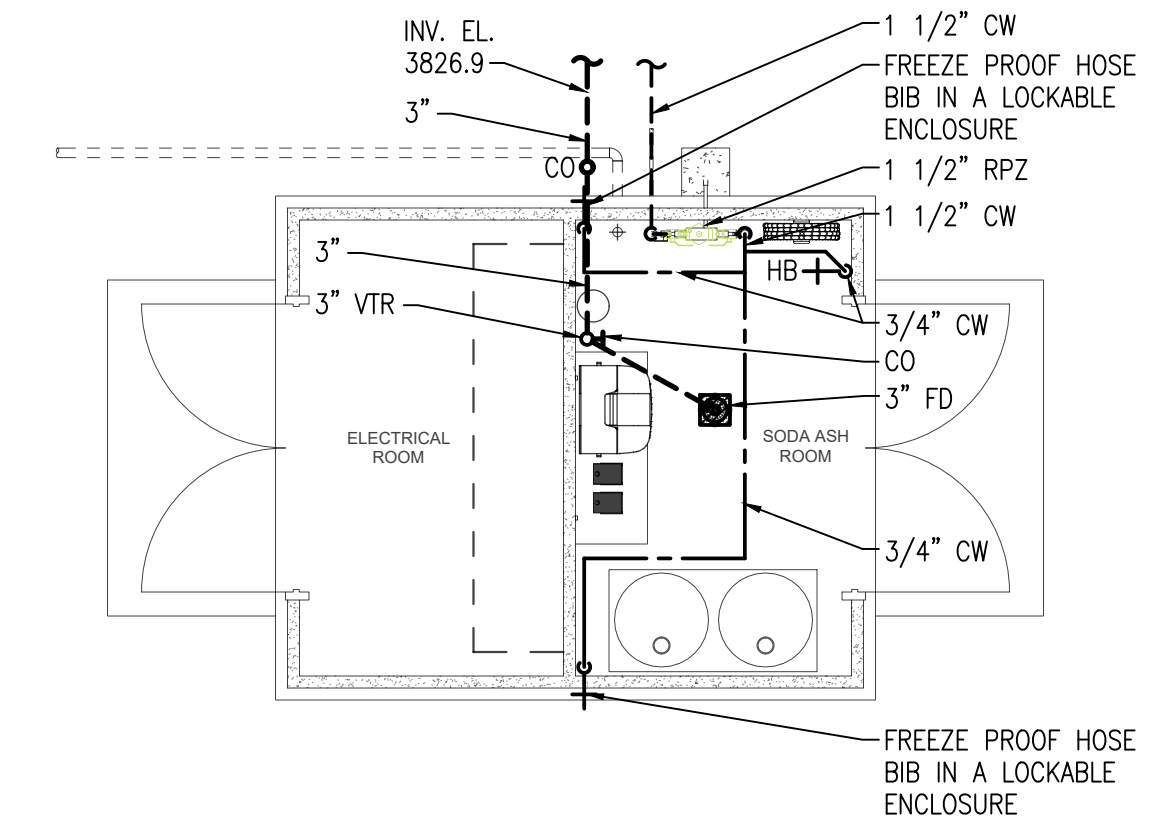
JOB NO.
53153.001

SHEET NO.
H2.1

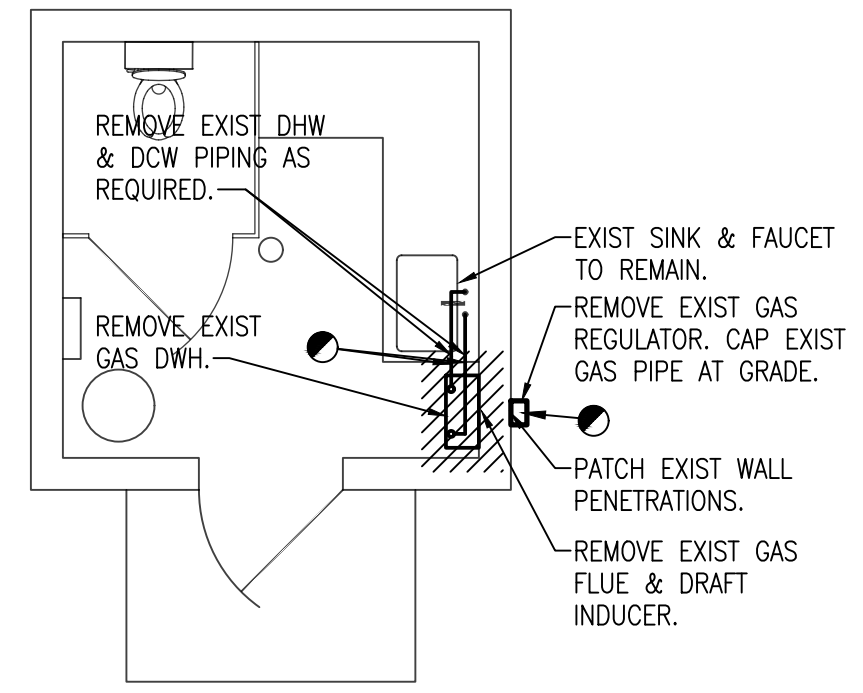


These plans and associated documents are the exclusive property of TIMMONS GROUP and may not be reproduced in whole or in part and shall not be used for any purpose whatsoever, inclusive, but not limited to construction, bidding, and/or construction staking without the express written consent of TIMMONS GROUP.

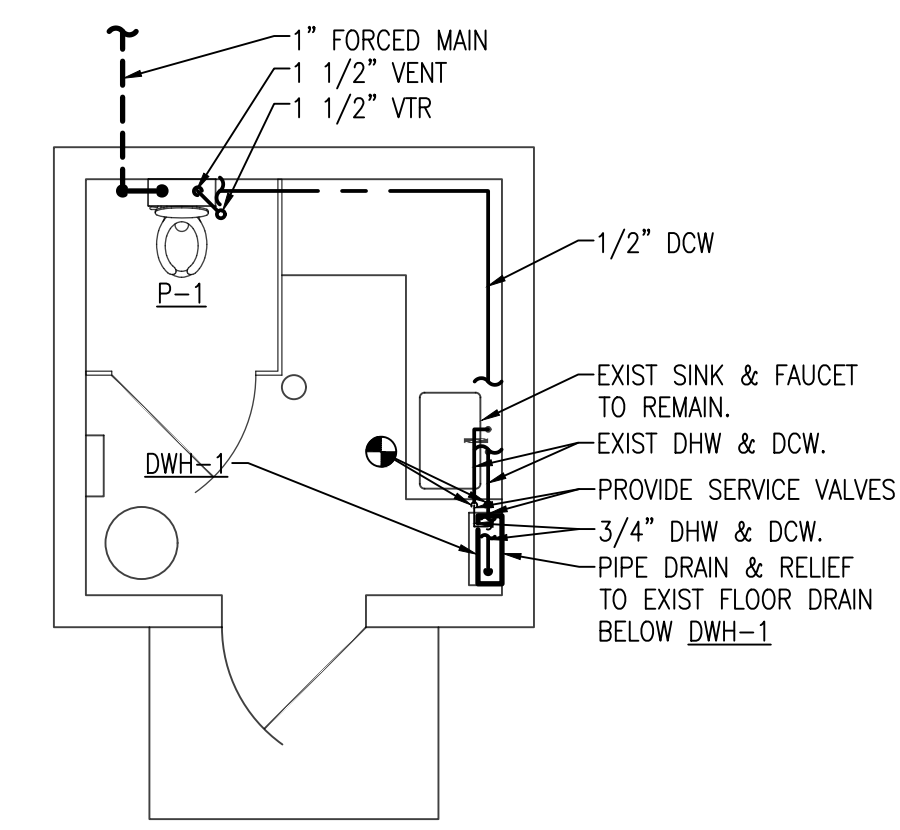
C:\Users\jmf\Documents\JS Fuller\Projects\22006 Mt. Lake WTP\Plumbing\Drawings\DWG\DWG01.DWG | Plotted by James S. Fuller



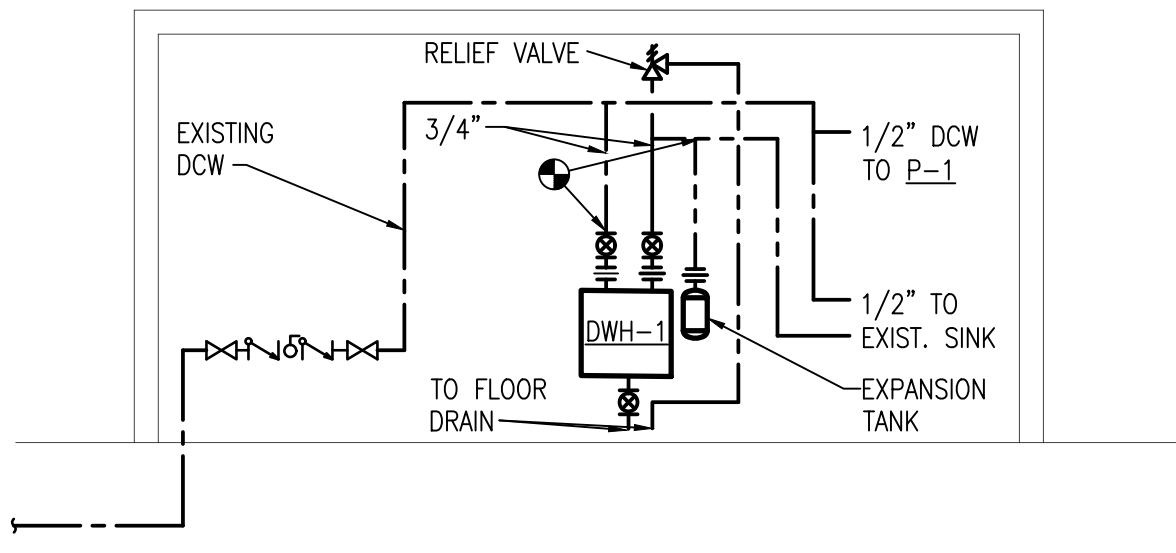
1 ADMIN / ELECTRICAL BUILDING
SCALE: 1/4" = 1'-0"



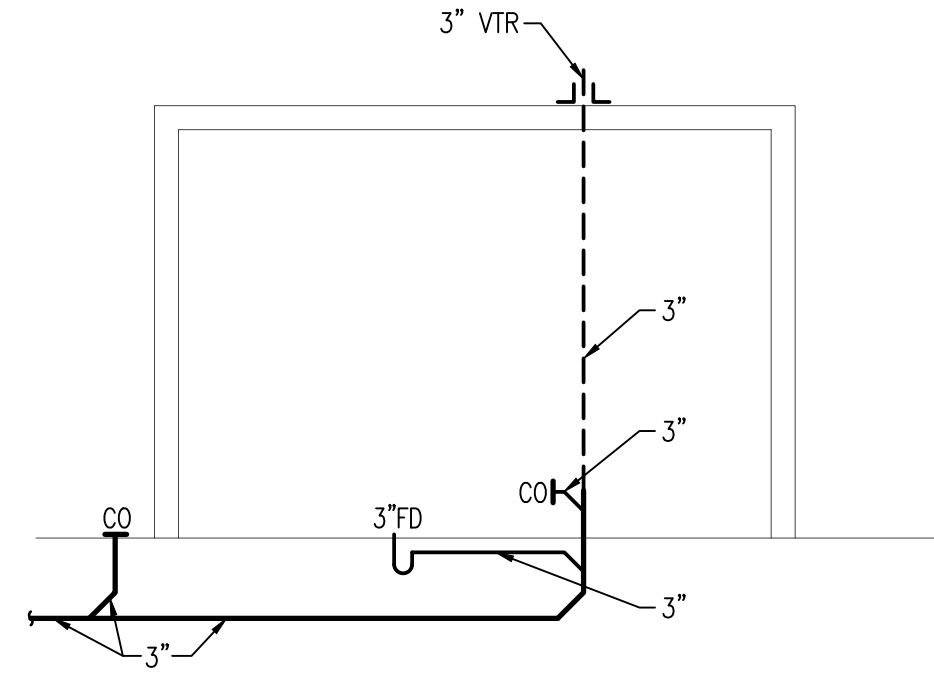
2 EXISTING UTILITY BUILDING - DEMOLITION
SCALE: 1/4" = 1'-0"



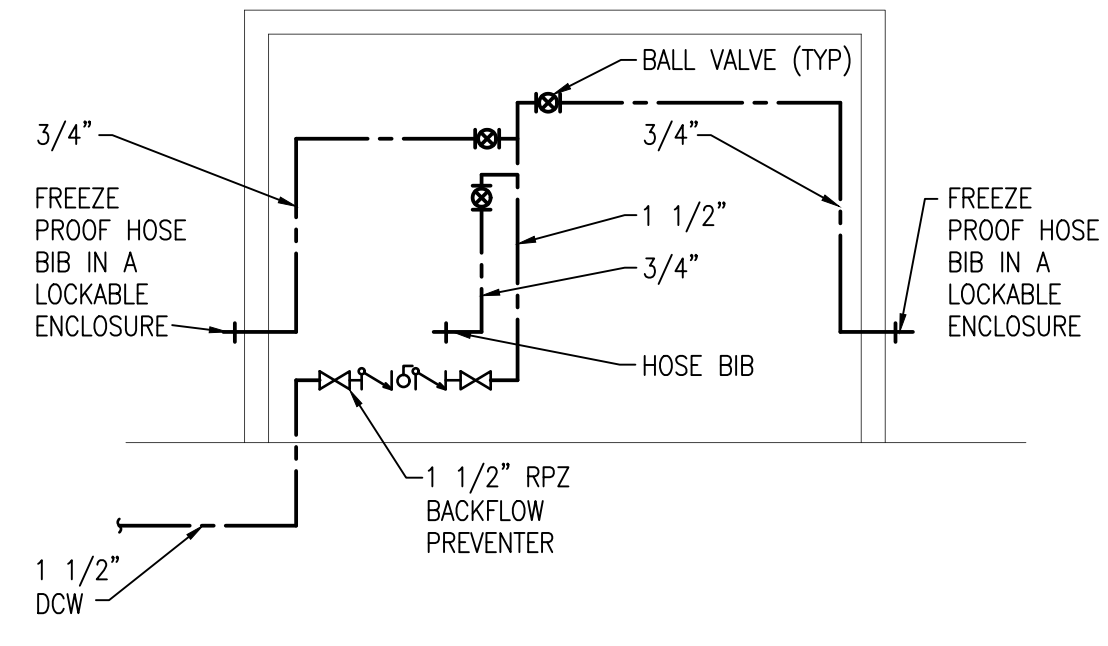
3 EXISTING UTILITY BUILDING - NEW WORK
SCALE: 1/4" = 1'-0"



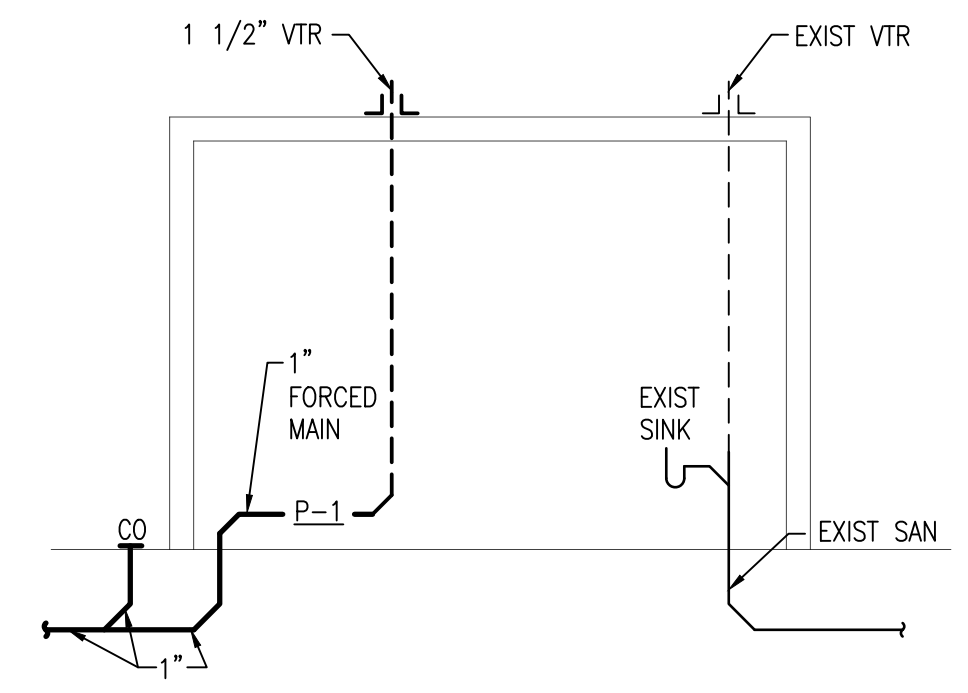
4 EXISTING UTILITY BUILDING RISER DIAGRAM
NO SCALE



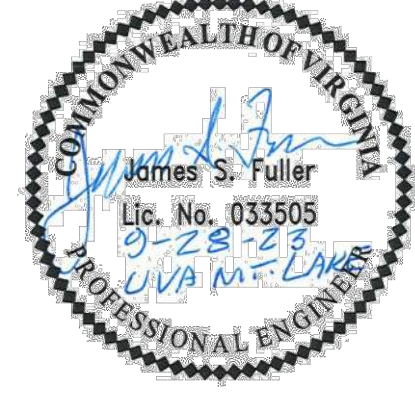
5 ADMIN/ELECTRICAL BUILDING WASTE & VENT RISER DIAGRAM
NO SCALE



6 ADMIN/ELECTRICAL DOMESTIC WATER RISER DIAGRAM
NO SCALE



7 EXISTING UTILITY BUILDING WASTE & VENT RISER DIAGRAM
NO SCALE



THIS DRAWING PREPARED AT THE
CORPORATE OFFICE
1001 Boulders Parkway, Suite 300 | Richmond, VA 23225
TEL 804-200-0300 FAX 804-366-1016 www.timmons.com

JS FULLER
ENGINEERING
9702 GAYTON ROAD #238
DALLAS TEXAS 75236
(817) 496-2027

REVISION DESCRIPTION
REVISED BID PLANS PER CUBO REVIEW
REVISED BID PLANS PER CUBO REVIEW

DATE	DATE
09/15/2023	09/28/2023
DRAWN BY	JSF
DESIGNED BY	JSF
CHECKED BY	JSF
SCALE	AS NOTED

TIMMONS GROUP

MOUNTAIN LAKE WASTEWATER TREATMENT PLANT

PLUMBING FLOOR PLANS & RISER DIAGRAMS

JOB NO.
53153.001
SHEET NO.
P2.1

These plans and associated documents are the exclusive property of TIMMONS GROUP and may not be reproduced in whole or in part and shall not be used for any purpose whatsoever, inclusive, but not limited to construction, bidding, and/or construction staking without the express written consent of TIMMONS GROUP.