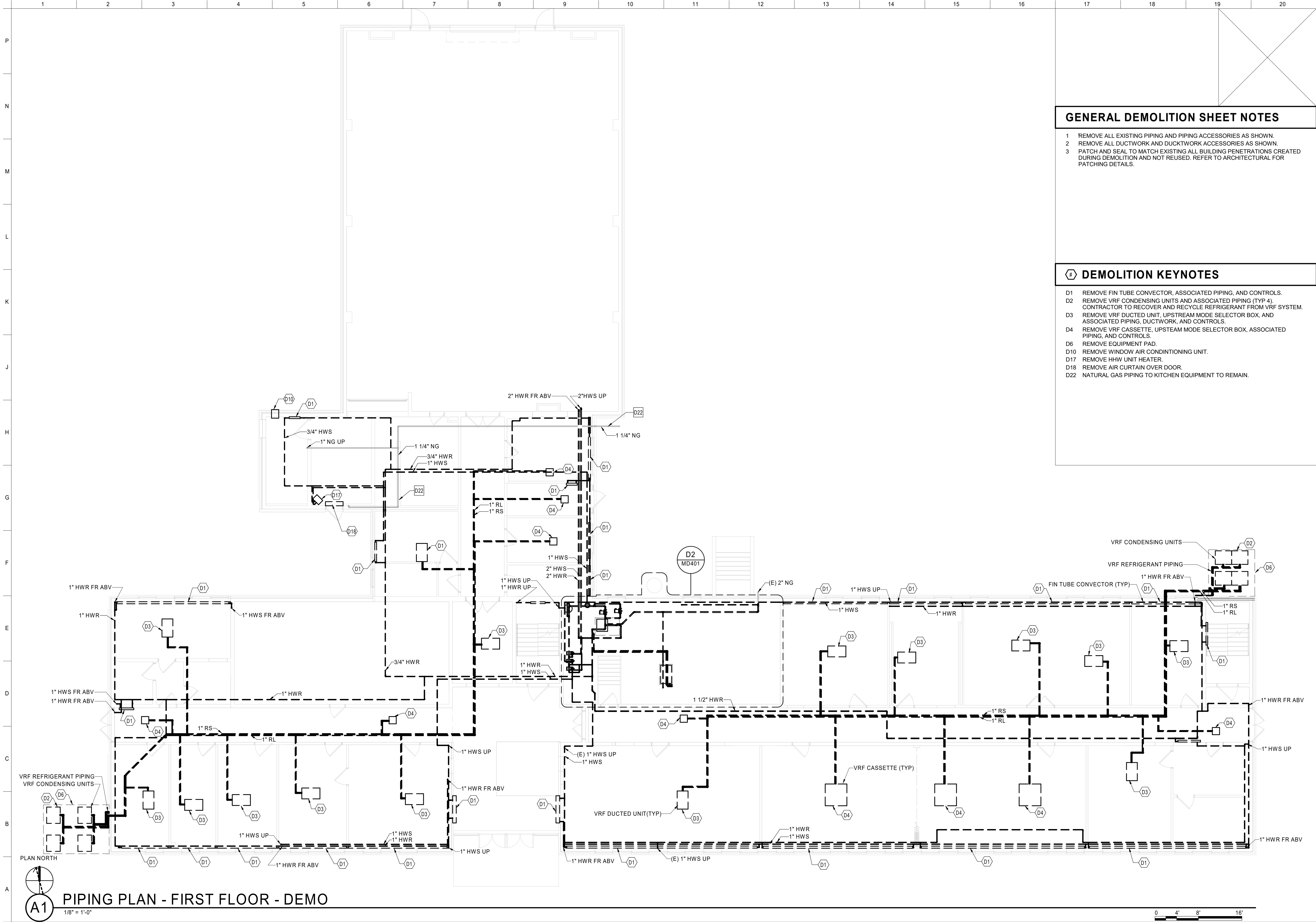


UNITED STATES ARMY RESERVE CENTER, SALEM, VA TRAINING CENTER RENOVATION & ADDITION P2 # - 499678		US ARMY CORPS OF ENGINEERS LOUISVILLE DISTRICT LOUISVILLE, KY		DESIGNED BY: FEBRUARY 22, 2023	ISSUE DATE:		
LEGEND, ABBREVIATIONS & GENERAL NOTES		JOHN C. GRIMBERG CO. ROCKVILLE, MD		DRAWN BY: TEA / KEL	CONTRACT NO.:		
				CHECKED BY:	CONTRACT NO.:		
				AEB	W912QR22R0040		
				SUBMITTED BY:			
				SIZE:			
				ANSI D		MARK	DATE
SHEET ID		M-001					



PIPING PLAN - FIRST FLOOR - DEMO

1/8" = 1'-0"

GENERAL DEMOLITION SHEET NOTES

- 1 REMOVE ALL EXISTING PIPING AND PIPING ACCESSORIES AS SHOWN.
- 2 REMOVE ALL DUCTWORK AND DUCTWORK ACCESSORIES AS SHOWN.
- 3 PATCH AND SEAL TO MATCH EXISTING ALL BUILDING PENETRATIONS CREATED DURING DEMOLITION AND NOT REUSED. REFER TO ARCHITECTURAL FOR PATCHING DETAILS.

DEMOLITION KEYNOTES

- D1 REMOVE FIN TUBE CONVECTOR, ASSOCIATED PIPING, AND CONTROLS.  
D2 REMOVE VRF CONDENSING UNITS AND ASSOCIATED PIPING (TYP 4). CONTRACTOR TO RECOVER AND RECYCLE REFRIGERANT FROM VRF SYSTEM.  
D3 REMOVE VRF DUCTED UNIT, UPSTREAM MODE SELECTOR BOX, AND ASSOCIATED PIPING, DUCTWORK, AND CONTROLS.  
D4 REMOVE VRF CASSETTE, UPSTREAM MODE SELECTOR BOX, ASSOCIATED PIPING, AND CONTROLS.  
D6 REMOVE EQUIPMENT PAD.  
D10 REMOVE WINDOW AIR CONDITIONING UNIT.  
D17 REMOVE HHW UNIT HEATER.  
D18 REMOVE AIR CURTAIN OVER DOOR.  
D22 NATURAL GAS PIPING TO KITCHEN EQUIPMENT TO REMAIN.



US Army Corps  
of Engineers ®

ISSUE DATE: FEBRUARY 22, 2023  
DESIGNED BY: KEL  
DRAWN BY: TEA / KEL  
CHECKED BY: AEB  
SUBMITTED BY:  
SOLICITATION NO.: W912QR22R0040  
CONTRACT NO.: W912QR22R0040  
SIZE: ANS/D

US ARMY CORPS OF ENGINEERS  
LOUISVILLE DISTRICT  
LOUISVILLE, KY

JOHN C. GRIMBERG CO.  
ROCKVILLE, MD

UNITED STATES ARMY RESERVE CENTER, SALEM, VA  
TRAINING CENTER RENOVATION & ADDITION  
P2 #: 499678

TC PIPING PLAN - FIRST FLOOR - DEMOLITION

SHEET ID

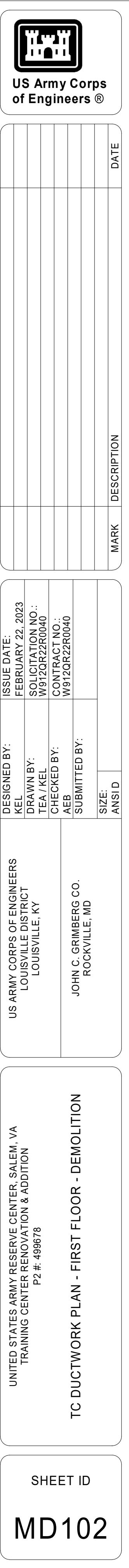
MD101

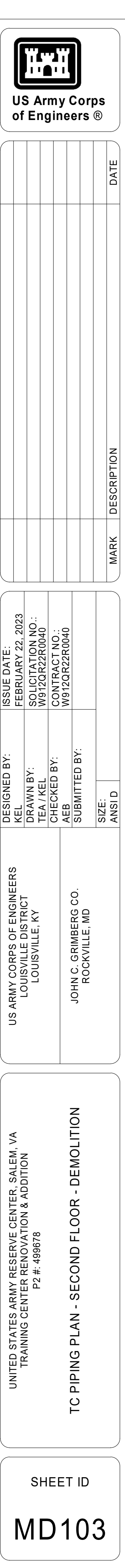
\\s2\lan\Pd\Bldg\Bldg\Drawings\22\17P01\_1\_TC\_M\_GEA\_JamesCGR14.rvt

File Path:

Plot Date: 2/22/2023 10:42:25 AM

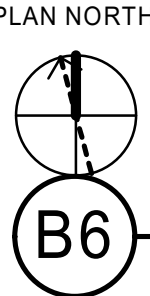
INTERIM DESIGN SUBMISSION










$$1/8'' = 1'-0''$$


- 1 REMOVE ALL EXISTING PIPING AND PIPING ACCESSORIES AS SHOWN.
- 2 REMOVE ALL DUCTWORK AND DUCTWORK ACCESSORIES AS SHOWN.
- 3 PATCH AND SEAL TO MATCH EXISTING ALL BUILDING PENETRATIONS CREATED DURING DEMOLITION AND NOT REUSED. REFER TO ARCHITECTURAL FOR PATCHING DETAILS.

D1 REMOVE PLASTIC EQUIPMENT PAD.  
D2 REMOVE SPLIT SYSTEM OUTDOOR CONDENSING UNIT AND ASSOCIATED PIPING.  
D3 REMOVE SPLIT SYSTEM INDOOR EVAPORATOR UNIT AND ASSOCIATED PIPING.  
D6 RELOCATE GAS-FIRED UNIT HEATER.  
D7 REMOVE GAS-FIRED UNIT HEATER.

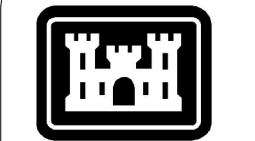
US ARMY CORPS OF ENGINEERS LOUISVILLE DISTRICT LOUISVILLE, KY	DESIGNED BY:	AEB	ISSUE DATE:	FEBRUARY 22, 2023
	DRAWN BY:	KEL/TEA	SOLICITATION NO.:	W312QZKZ0040
JOHN C. GRIMBERG CO. ROCKVILLE, MD	CHECKED BY:	TEA	CONTRACT NO.:	W312QZKZ0040
	SUBMITTED BY:			
SIZE:		ANSI D		

UNITED STATES ARMY RESERVE CENTER, SALEM, VA  
TRAINING CENTER RENOVATION & ADDITION  
P2 #: 499678

VMS PIPING PLAN - FIRST FLOOR - DEMOLITION

SHEET ID

MD121



**US Army Corps  
of Engineers®**

[illegible]

Plot Date:	2/22/2023 11:04:19 AM	File Path:	\\fish2\UserProfile\Starnes\Documents\22217R21_VMS_M_CEN_tame6C6Y.nt
------------	-----------------------	------------	--

INTERIM DESIGN SUBMISSION



## GENERAL DEMOLITION SHEET NOTES

- 1 REMOVE ALL EXISTING PIPING AND PIPING ACCESSORIES AS SHOWN.
- 2 REMOVE ALL DUCTWORK AND DUCTWORK ACCESSORIES AS SHOWN.
- 3 PATCH AND SEAL TO MATCH EXISTING ALL BUILDING PENETRATIONS CREATED DURING DEMOLITION AND NOT REUSED. REFER TO ARCHITECTURAL FOR PATCHING DETAILS.

## DEMOLITION KEYNOTES

- D1 REMOVE PLASTIC EXHAUST PAD.  
D4 EXISTING TO REMAIN VEHICLE EXHAUST HOSE REEL.  
D5 REMOVE VEHICLE EXHAUST HOSE REEL AND ASSOCIATED DUCTWORK.  
D6 RELOCATE GAS-FIRED UNIT HEATER.  
D7 REMOVE GAS-FIRED UNIT HEATER.  
D8 REMOVE EXHAUST FAN.  
D9 RELOCATE VEHICLE EXHAUST HOSE REEL.  
D10 EXISTING TO REMAIN ABANDONED DUCTWORK.  
D11 REMOVE BATHROOM EXHAUST GRILLE.  
D12 EXISTING TO REMAIN EXHAUST LOUVER.

US ARMY CORPS OF ENGINEERS LOUISVILLE DISTRICT LOUISVILLE, KY	DESIGNED BY: AEB	ISSUE DATE: FEBRUARY 22, 2023
	DRAWN BY: KEL / TEA	SOLICITATION NO.: W912QR22R0040
	CHECKED BY: KEL	CONTRACT NO.: W912QR22R0040
JOHN C. GRIMBERG CO. ROCKVILLE, MD	SUBMITTED BY:	
	SIZE:	

UNITED STATES ARMY RESERVE CENTER, SALEM, VA  
TRAINING CENTER RENOVATION & ADDITION  
P2 #: 499678

VMS DUCTWORK PLAN - FIRST FLOOR - DEMOLITION

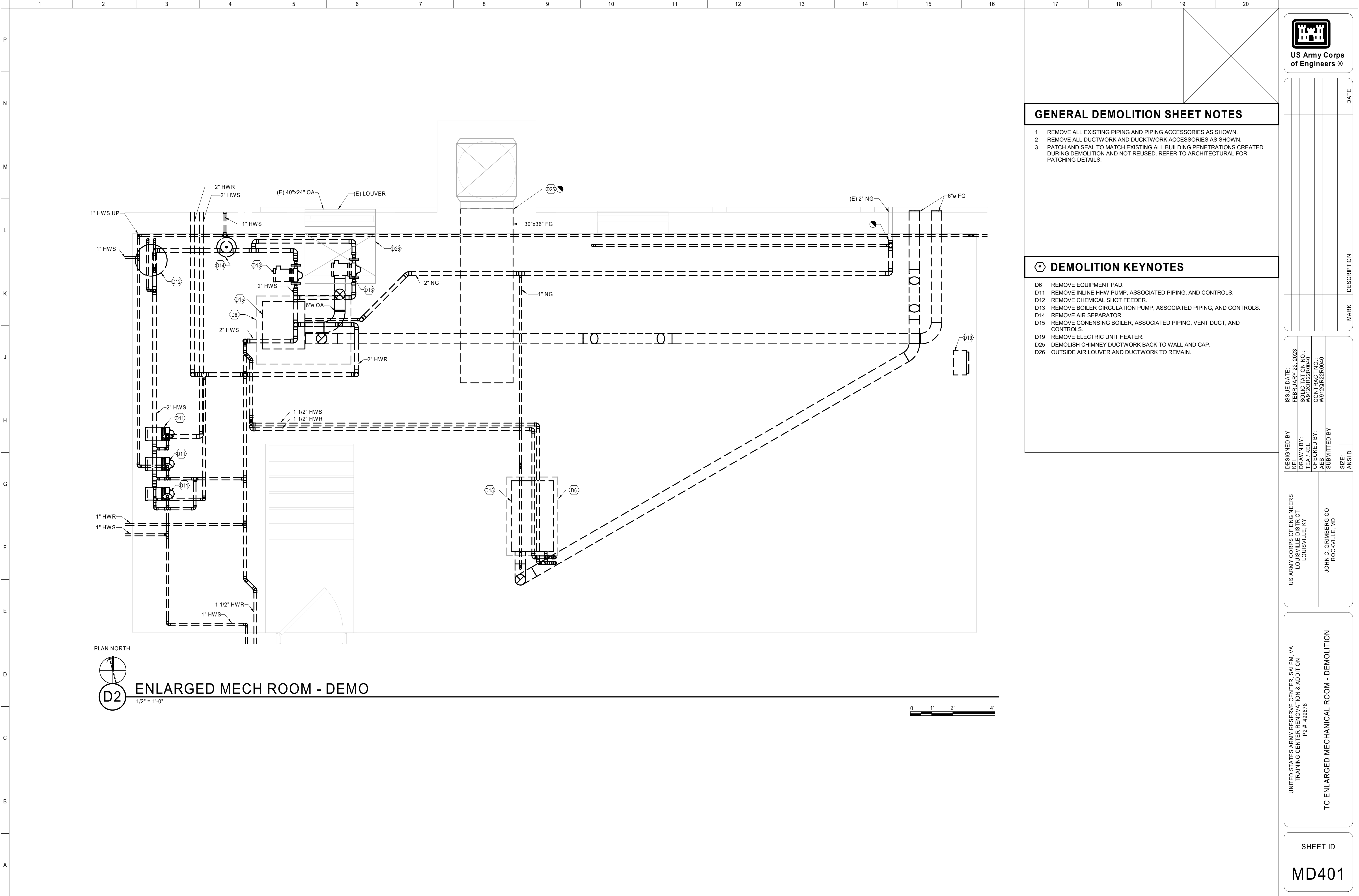
SHEET ID

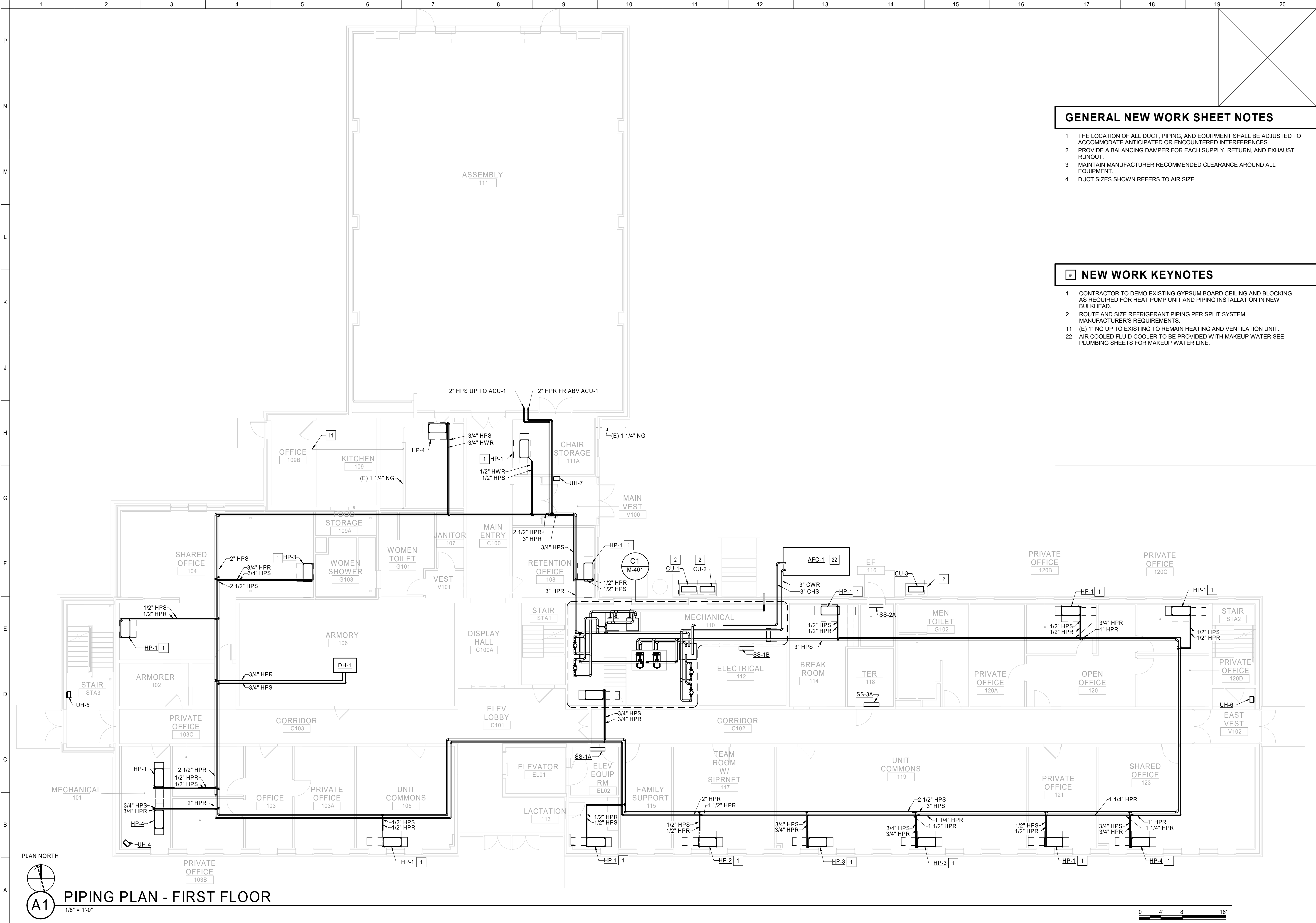
MD122


INTERIM DESIGN SUBMISSION

Plot Date: 2/22/2023 11:04:19AM File Path:

```
ifsr2\UserProfile$\james\Documents\222177R21_VMS_M_CEN_jamesCSTAY.nc
```







US Army Corps  
of Engineers®

1

2

3

4

5

6

7

8

9

10

11

12

13

14

15

16

17

18

19

20

GENERAL NEW WORK SHEET NOTES

1 THE LOCATION OF ALL DUCT, PIPING, AND EQUIPMENT SHALL BE ADJUSTED TO ACCOMMODATE ANTICIPATED OR ENCOUNTERED INTERFERENCES.  
2 PROVIDE A BALANCING DAMPER FOR EACH SUPPLY, RETURN, AND EXHAUST RUNOUT.  
3 MAINTAIN MANUFACTURER RECOMMENDED CLEARANCE AROUND ALL EQUIPMENT.  
4 DUCT SIZES SHOWN REFERS TO AIR SIZE.

# NEW WORK KEYNOTES

1 CONTRACTOR TO DEMO EXISTING GYPSUM BOARD CEILING AND BLOCKING AS REQUIRED FOR HEAT PUMP UNIT AND PIPING INSTALLATION IN NEW BULKHEAD.  
2 ROUTE AND SIZE REFRIGERANT PIPING PER SPLIT SYSTEM MANUFACTURER'S REQUIREMENTS.  
11 (E) 1" NG UP TO EXISTING TO REMAIN HEATING AND VENTILATION UNIT.  
22 AIR COOLED FLUID COOLER TO BE PROVIDED WITH MAKEUP WATER SEE PLUMBING SHEETS FOR MAKEUP WATER LINE.

DESIGNED BY: KEI  
DRAWN BY: TEA / KEL  
CHECKED BY: AEB  
SUBMITTED BY: AEB

ISSUE DATE: FEBRUARY 22, 2023  
SOLICITATION NO.: W912QR22R0040  
CONTRACT NO.: W912QR22R0040

US ARMY CORPS OF ENGINEERS  
LOUISVILLE DISTRICT  
LOUISVILLE, KY

JOHN C. GRIMBERG CO.  
ROCKVILLE, MD

UNITED STATES ARMY RESERVE CENTER, SALEM, VA  
TRAINING CENTER RENOVATION & ADDITION  
P2 # 499078

TC PIPING PLAN - FIRST FLOOR

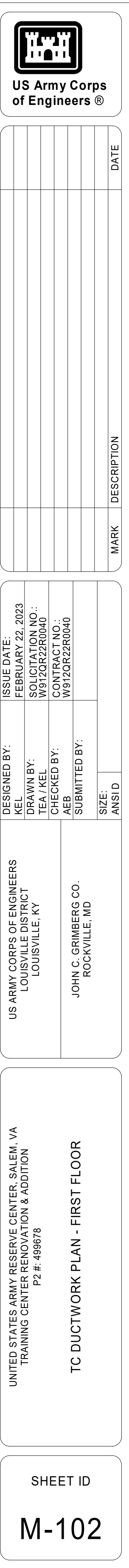
SHEET ID

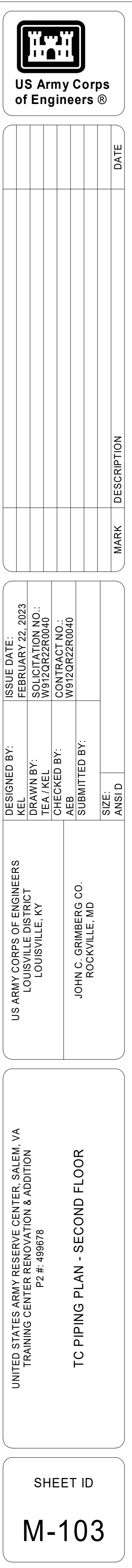
M-101

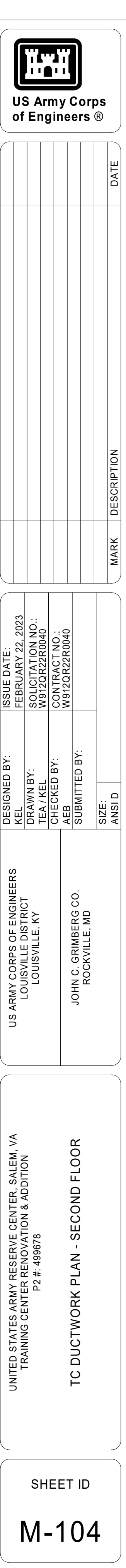
INTERIM DESIGN SUBMISSION

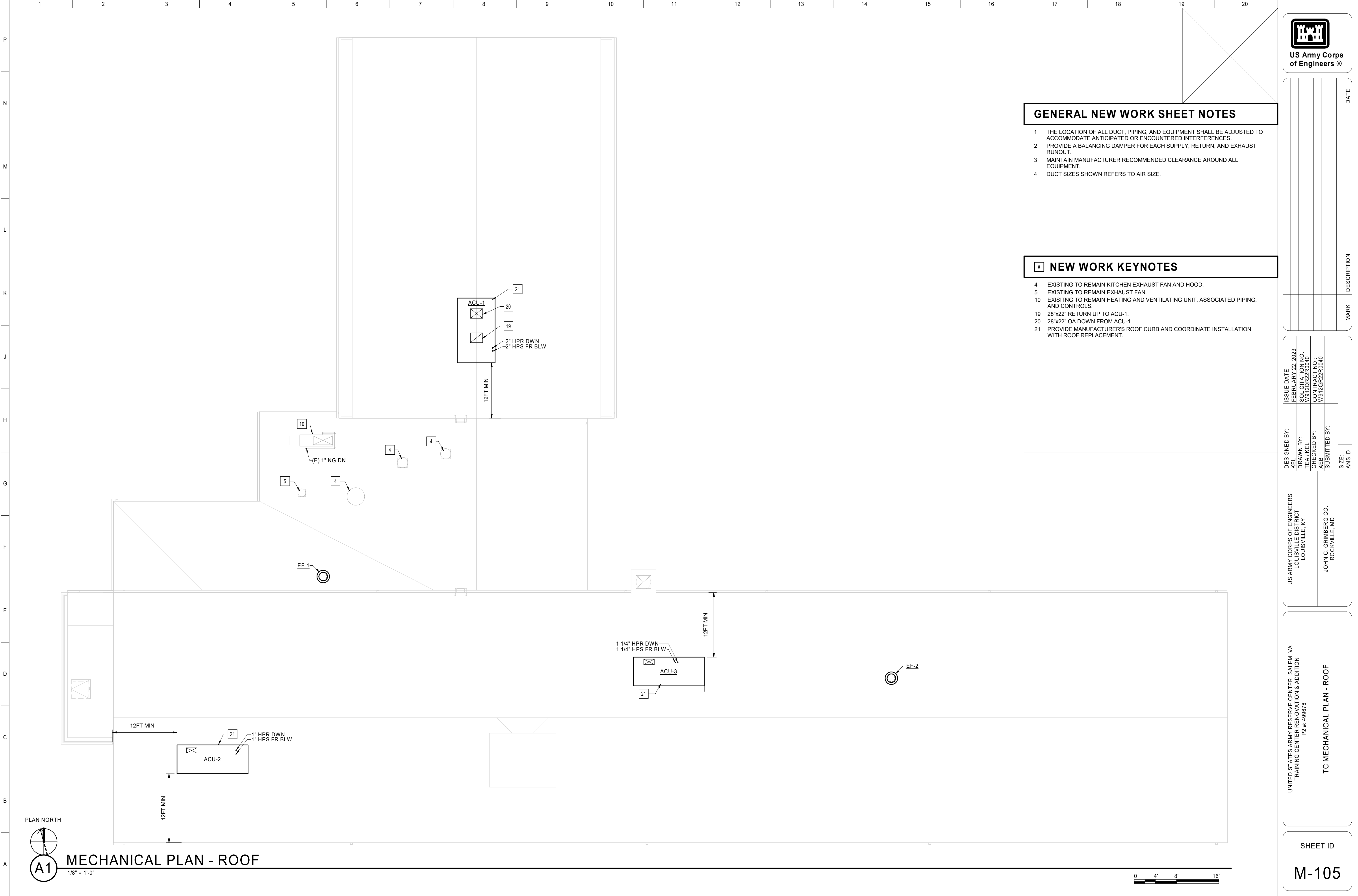
Plot Date: 2/22/2023 10:22:02 AM

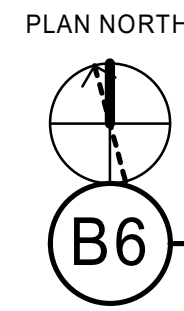
File Path: \\s3\user\p04\james\Documents\22277921\_TC\_M\_CD\JamesCD\TA\1\4



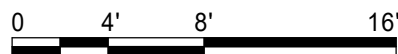








# PIPING PLAN - FIRST FLOOR

$$1/8'' = 1'-0''$$


- 1 THE LOCATION OF ALL DUCT, PIPING, AND EQUIPMENT SHALL BE ADJUSTED TO ACCOMMODATE ANTICIPATED OR ENCOUNTERED INTERFERENCES.
- 2 PROVIDE A BALANCING DAMPER FOR EACH SUPPLY, RETURN, AND EXHAUST RUNOUT.
- 3 MAINTAIN MANUFACTURER RECOMMENDED CLEARANCE AROUND ALL EQUIPMENT.
- 4 DUCT SIZES SHOWN REFERS TO AIR SIZE.

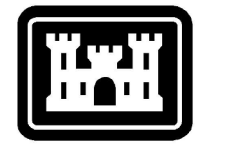
1 RELOCATED GAS-FIRED UNIT HEATER.  
2 ROUTE AND SIZE REFRIGERANT PIPING PER SPLIT SYSTEM  
MANUFACTURER'S REQUIREMENTS.  
4 CAP PIPING.  
9 PROVIDE EQUIPMENT PAD.

US ARMY CORPS OF ENGINEERS LOUISVILLE DISTRICT LOUISVILLE, KY	DESIGNED BY:	ISSUE DATE:
	DRAWN BY: KEL TEA	FEBRUARY 22, 2023 AEB
JOHN C. GRIMBERG CO. ROCKVILLE, MD	CHECKED BY:	CONTRACT NO.:
	KEL	W912QR22R040
	SUBMITTED BY:	W912QR22R040
SIZE:		ANSI D

UNITED STATES ARMY RESERVE CENTER, SALEM, VA  
TRAINING CENTER RENOVATION & ADDITION  
PZ #. 499678

SHEET ID

M-121



**US Army Corps  
of Engineers®**

[illegible]

\\fs2\UserProfile\$\ames\Documents\222177R21\_VMS\_M\_CEN\_amesCSTAY.nt

File Path:

2/22/2023 11:04:16 AM

Plot Date:

## INTERIM DESIGN SUBMISSION



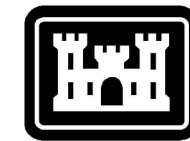
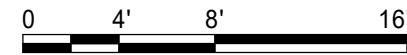
PLAN NORTH



**B6**

## MECHANICAL PLAN - ROOF

SCALE: 1/8" = 1'-0"



**US Army Corps  
of Engineers®**

## GENERAL NEW WORK SHEET NOTES

- 1 THE LOCATION OF ALL DUCT, PIPING, AND EQUIPMENT SHALL BE ADJUSTED TO ACCOMMODATE ANTICIPATED OR ENCOUNTERED INTERFERENCES.
- 2 PROVIDE A BALANCING DAMPER FOR EACH SUPPLY, RETURN, AND EXHAUST RUNOUT.
- 3 MAINTAIN MANUFACTURER RECOMMENDED CLEARANCE AROUND ALL EQUIPMENT.
- 4 DUCT SIZES SHOWN REFERS TO AIR SIZE.

## NEW WORK KEYNOTES

- 5 REUSE EXISTING FLUE GAS VENT THROUGH ROOF.  
6 PROVIDE FLUE GAS VENT THROUGH ROOF.  
10 EXISTING TO REMAIN ABANDONED DUCTWORK.

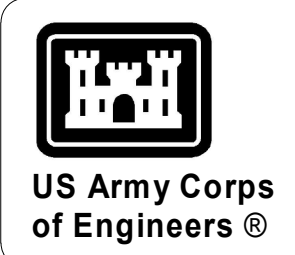
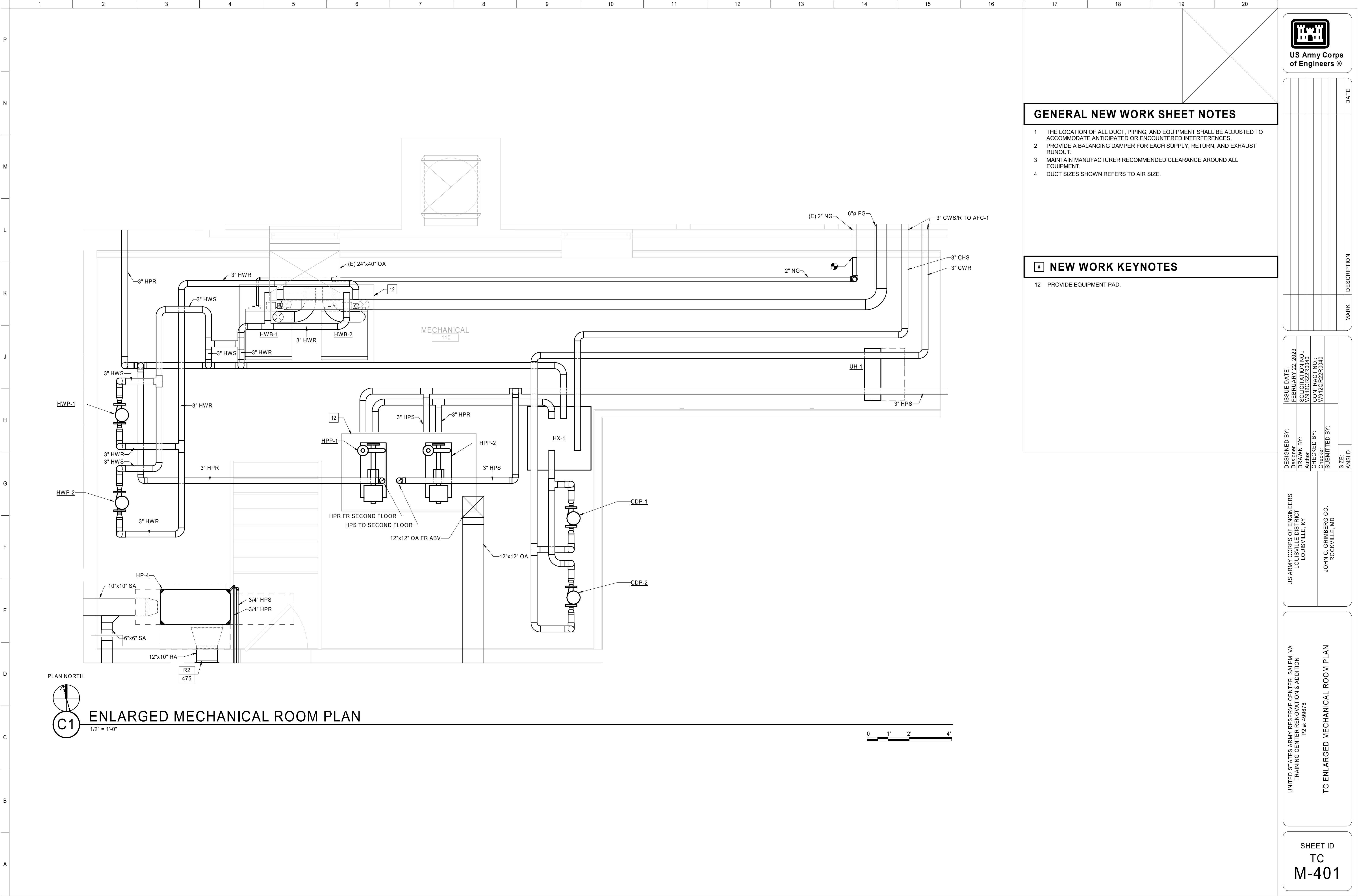
US ARMY CORPS OF ENGINEERS LOUISVILLE DISTRICT LOUISVILLE, KY	DESIGNED BY:	ISSUE DATE:	
	AEB	FEBRUARY 22, 2023	
JOHN C. GRIMBERG CO. ROCKVILLE, MD	DRAWN BY:	SOLICITATION NO.:	
	KEL/TEA	W912QKZ2R040	
	CHECKED BY:	CONTRACT NO.:	
	KEL	W912QKZ2R040	
	SUBMITTED BY:		
	SIZE:	ANSI/D	

UNITED STATES ARMY RESERVE CENTER, SALEM, VA  
TRAINING CENTER RENOVATION & ADDITION  
P2 #. 499878

VMS MECHANICAL PLAN - ROOF

SHEET ID

M-123



GENERAL NEW WORK SHEET NOTES

- 1 THE LOCATION OF ALL DUCT, PIPING, AND EQUIPMENT SHALL BE ADJUSTED TO ACCOMMODATE ANTICIPATED OR ENCOUNTERED INTERFERENCES.
- 2 PROVIDE A BALANCING DAMPER FOR EACH SUPPLY, RETURN, AND EXHAUST RUNOUT.
- 3 MAINTAIN MANUFACTURER RECOMMENDED CLEARANCE AROUND ALL EQUIPMENT.
- 4 DUCT SIZES SHOWN REFERS TO AIR SIZE.

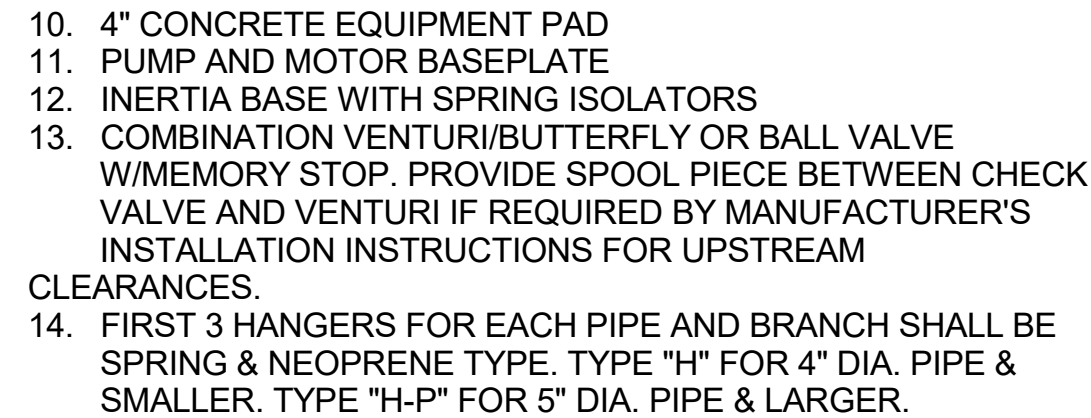
NEW WORK KEYNOTES

- 12 PROVIDE EQUIPMENT PAD.

DESIGNED BY: Designer	ISSUE DATE: FEBRUARY 22, 2023
	SOLICITATION NO.:
	W912Q2R040
	CONTRACT NO.:
US ARMY CORPS OF ENGINEERS LOUISVILLE DISTRICT LOUISVILLE, KY	W912Q2R040
	CHECKED BY:
	Checker
	SUBMITTED BY:
JOHN C. GRIMBERG CO. ROCKVILLE, MD	SIZE:
	ANSI D

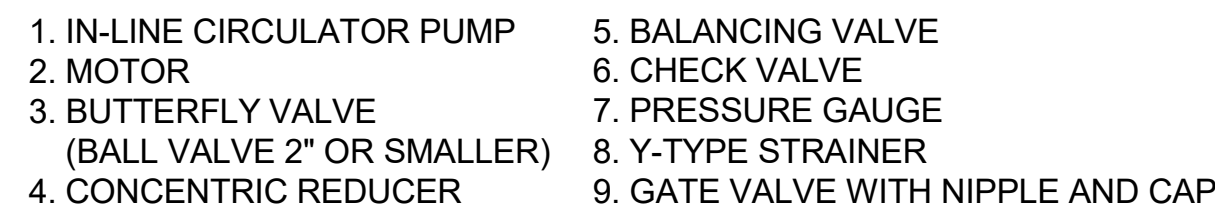
UNITED STATES ARMY RESERVE CENTER, SALEM, VA TRAINING CENTER RENOVATION & ADDITION P2 #: 498678	TC ENLARGED MECHANICAL ROOM PLAN
---	----------------------------------

SHEET ID TC M-401
-------------------------



## SCALE: NONE

- NOTES:
1. ALL VALVES, STRAINERS, FITTINGS ETC. SHALL BE FULL LINE SIZE.
  2. PROVIDE SPOOL PIECE AS NECESSARY TO MAINTAIN NOT LESS THAN 4" BETWEEN FLANGES ON PUMP INLET AND OUTLET FITTINGS.
  3. TRIPLE DUTY VALVES ARE NOT ALLOWED.

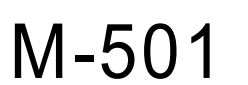


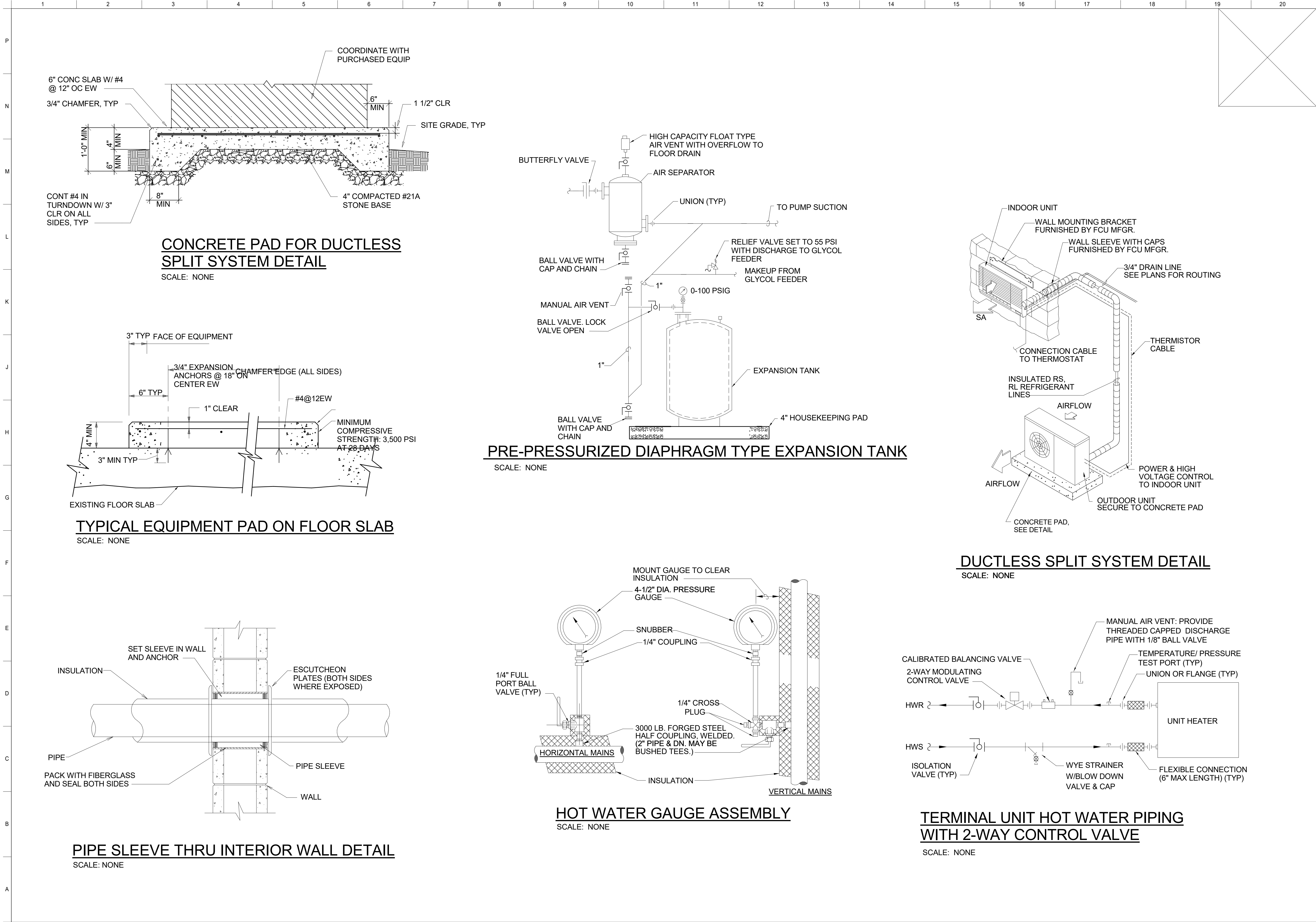
SCALE: NONE

- NOTES:
1. PROVIDE A SECTION OF STRAIGHT PIPE WITH A LENGTH OF 5 TIMES ITS DIAMETER BETWEEN THE SUCTION SIDE OF THE PUMP AND THE FIRST ELBOW.
  2. ALL VALVES, STRAINERS, FITTINGS ETC. SHALL BE FULL LINE SIZE.
  3. PROVIDE WATER HEATER CIRCULATION PUMPS IN ACCORDANCE WITH WATER HEATER MANUFACTURER'S INSTALLATION INSTRUCTIONS.



- NOTES:
1. REFER TO MANUFACTURER'S RECOMMENDATIONS FOR UPSTREAM AND DOWNSTREAM DISTANCES REQUIRED. INSTALL STRAIGHTENING VANES TO ACHIEVE REQUIRED DISTANCES IF NECESSARY.
  2. METER INSERTION DEPTH SHALL BE PER MANUFACTURER'S GUIDELINES. METER MUST ALWAYS BE PERPENDICULAR TO THE PIPE. INSTALLATION IN VERTICAL RUN PIPES IS ALSO ACCEPTABLE.
  3. PROVIDE SUFFICIENT CLEARANCE FOR METER REMOVAL AND MAINTENANCE.





**US Army Corps of Engineers®**

MARK	DESCRIPTION	DATE

DESIGNED BY: XEL

DRAWN BY: TEA / KEL

CHECKED BY: AEB

SUBMITTED BY: AEB

ISSUE DATE: FEBRUARY 22, 2023

SOLICITATION NO.: W912QR22R0040

CONTRACT NO.: W912QR22R0040

US ARMY CORPS OF ENGINEERS  
LOUISVILLE DISTRICT  
LOUISVILLE, KY

JOHN C. GRIMBERG CO.  
ROCKVILLE, MD

UNITED STATES ARMY RESERVE CENTER, SALEM, VA  
TRAINING CENTER RENOVATION & ADDITION  
P2 #: 498678

TC DETAILS

SHEET ID

**M-502**

Plot Date: 2/22/2023 10:22:30 AM

File Path: \\us21userp01\us21\us21\Drawings\22177P2\TC\_M\_CD\tema2071\1.rvt

INTERIM DESIGN SUBMISSION







1	2	3	4	5
EXHAUST FAN SCHEDULE				
DESIGNATION		EF-3	EF-4	
USAGE		RESTROOM EXHAUST	VEHICLE BAY EXHAUST	
LOCATION		VMS ROOF	VMS ROOF	
DESCRIPTION		CENTRIFUGAL DOWNBLAST	CENTRIFUGAL DOWNBLAST	
MANUFACTURER BASIS OF DESIGN		GREENHECK	GREENHECK	
MODEL BASIS OF DESIGN		G-090-VG	GB-180HP	
FAN DATA	AIRFLOW (SCFM)	425	2,000	
	EXTERNAL STATIC PRESSURE (IN WC)	0.4	0.6	
	RPM	1,405	952	
	DRIVE TYPE	DIRECT	BELT	
MOTOR DATA	HORSEPOWER	1/10	1/2	
	RPM	1,800	1,800	
	VOLTAGE (V)	115	115	
	PHASE	1	1	
	FREQUENCY (Hz)	60	60	
MAXIMUM dBA AT 5 FEET		51	60	
REMARKS		1, 2 & 3	1, 3, 4 & 5	
REMARKS LEGEND:				
1. PROVIDE FAN WITH UNIT MOUNTED DISCONNECT.				
2. PROVIDE FAN WITH ELECTRONICALLY COMMUTATED MOTOR (ECM) AND WITH ADJUSTABLE SPEED.				
3. PROVIDE BACKDRAFT DAMPER.				
4. PROVIDE SPARK RESISTANT ALUMINUM HOUSING CONSTRUCTION				
5. PROVIDE VARIABLE FREQUENCY DRIVE.				


ACU SCHEDULE			
DESIGNATION		ACU-4	MAU-1
LOCATION		PHYSICAL READINESS ROOF	VEHICLE BAY ROOF
TYPE		GAS/ELECTRIC ROOFTOP	GAS MAKEUP AIR UNIT
SUPPLY FAN	TOTAL UNIT AIRFLOW (CFM)	1,100	2,250
	QUANTITY	1	1
	FAN TYPE	FORWARD CURVE	FORWARD CURVE
	CONTROL TYPE	DIRECT DRIVE WITH VFD	DIRECT DRIVE WITH VFD
	EXTERNAL STATIC PRESSURE (IN WC)	1.0	1.0
	MOTOR SPEED (RPM)	1,800	1,800
	MOTOR POWER, EACH (HP)	3/4	1
COOLING COIL	OUTSIDE AIRFLOW (CFM)	450	2,250
	OUTSIDE AIR TEMPERATURE DB/WB (°F)	92.1/72.6	-
	ENTERING AIR TEMPERATURE DB/WB (°F)	80.0/67.0	-
	LEAVING AIR TEMPERATURE DB/WB (°F)	56.4/55.0	-
	TOTAL CAPACITY (MBH)	37	-
	SENSIBLE CAPACITY (MBH)	28	-
	FACE VELOCITY (FPM)	500	-
HEATING COIL	SEER	14	-
	AIR PRESSURE DROP (IN WC)	0.35	-
	OUTSIDE AIR TEMPERATURE DB (°F)	19.8	19.8
	ENTERING AIR TEMPERATURE DB (°F)	55	19.8
	LEAVING AIR TEMPERATURE DB (°F)	124.7	113
	TOTAL CAPACITY (MBH)	65	160
	FACE VELOCITY (FPM)	500	500
ELECTRICAL	AIR PRESSURE DROP (IN WC.)	0.35	0.10
	HEAT TYPE	GAS HEAT	GAS HEAT
	HEATING STAGES	2.0	16.0
	PRE-FILTER - 2 INCH	MERV8	MERV8
	FINAL FILTER - 4 INCH	MERV13	MERV13
	UNIT LENGTH (IN)	61	161
	UNIT WIDTH (IN)	37	52
UNIT HEIGHT (IN)	36	55	
UNIT WEIGHT (LBS)	747	1909	
ELECTRICAL	VOLTAGE (V)	460	208
	PHASE	3	3
	FREQUENCY (Hz)	60	60
	MINIMUM CIRCUIT AMPS (A)	10.0	5.8
	MAX FUXE SIZE (A)	15	15
BASED ON		TRANE	GREENHECK
MODEL		PRECEDENT YSC036G	RV-10
HEAT PUMP REFRIGERANT		R410A	-
REMARKS		1, 2, 3, 4, 5, 6 & 7	1, 2, 3, 4, 5, 6 & 7
REMARKS LEGEND:			
1. PROVIDE UNIT MOUNTED AND WIRED VFD FOR EACH FAN MOTOR.			
2. PROVIDE PREMIUM EFFICIENCY MOTORS RATED FOR USE WITH VARIABLE FREQUENCY DRIVE.			
3. PROVIDE 120V CONVENIENCE OUTLET.			
4. EXTERNAL STATIC PRESSURES SHOWN DO NOT INCLUDE DIRTY FILTER LOSS.			
5. PROVIDE BACKDRAFT DAMPERS FOR EACH FAN.			
6. CONTROLLER INSTALLED AND WIRED IN THE FIELD BY CONTROLS CONTRACTOR.			
7. PROVIDE ROOF CURB.			

		7	8	9	10	11	12		
UNIT HEATER SCHEDULE									
DESIGNATION		UH-8		UH-9		UH-10		UH-11	
LOCATION		G101 WOMEN TOILET		G102 MEN TOILET		G03 UNISEX TOILET		V016 ENTRY	
AIRFLOW (CFM)		400		400		400		400	
TYPE		ELECTRIC WALL MOUNT		ELECTRIC WALL MOUNT		ELECTRIC WALL MOUNT		ELECTRIC WALL MOUNT	
THROW		HORIZONTAL		HORIZONTAL		HORIZONTAL		HORIZONTAL	
MINIMUM CAPACITY (MBH)		2.1		15.5		4.9		2.1	
ENTERING AIR TEMPERATURE (°F)		55.0		55.0		55.0		55.0	
ELECTRICAL DATA	POWER (W)	6		14		6		6	
	VOLTAGE (V)	208		208		208		208	
	PHASE	1		1		1		1	
	FREQUENCY (Hz)	60		60		60		60	
MAX APM RATING		15.9		24.1		15.9		15.9	
MOTOR DATA	HP	1/125		1/125		1/125		1/125	
	RPM	1600		1600		1600		1600	
REMARKS		1 & 2		1 & 2		1 & 2		1 & 2	
REMARKS LEGEND:									
1. PROVIDE WITH WALL MOUNTED THERMOSTAT.									
2. PROVIDE INTEGRAL DISCONNECT.									

VEHICLE EXHAUST FAN SCHEDULE	
DESIGNATION	VEF-1
AREA SERVED	VEHICLE BAYS
FAN TYPE	CENTRIFUGAL BLOWER
MANUFACTURER	PLYMONT
MODEL NUMBER	TEV-3110-60
CAPACITY (CFM)	3000
EXTERNAL STATIC PRESSURE (IN WC)	6.1
MOTOR POWER (HP)	3 / 3
MOTOR SPEED (RPM)	3470
DRIVE	DIRECT
ELECTRICAL VOLTAGE / PHASE	460/3
REMARKS:	(3) EXISTING HOSE DROPS

	1	2	3	4	5	6	7	8
<b>SCHEDULE</b>								
	UH-10	UH-11						
	G03 UNISEX TOILET	V016 ENTRY						
	400	400						
UNIT	ELECTRIC WALL MOUNT	ELECTRIC WALL MOUNT						
	HORIZONTAL	HORIZONTAL						
	4.9	2.1						
	55.0	55.0						
	6	6						
	208	208						
	1	1						
	60	60						
	15.9	15.9						
	1/125	1/125						
	1600	1600						
	1 & 2	1 & 2						

AIR TERMINAL SCHEDULE						
TAG NUMBER	S1	T1	T2	EG-1	EG-2	DL-1
DESCRIPTION	SUPPLY DIFFUSER	TRANSFER GRILLE	TRANSFER GRILLE	EXHAUST GRILLE	EXHAUST GRILLE	DRUM LOUVER
TYPE	LAY-IN	LAY-IN	SIDE WALL	LAY-IN	SURFACE MOUNTED	DUCT MOUNTED
	ROUND	RECTANGULAR	RECTANGULAR	RECTANGULAR	RECTANGULAR	RECTANGULAR
NECK SIZE	A=6" B=8" C=10"	6"x6"	6"x6"	6"x6"	PER DRAWINGS	PER DRAWINGS
FRAME SIZE	24"x24"	24"x24"	8"x8"	24"x24"	PER DRAWINGS	PER DRAWINGS
AIR PATTERN	4-WAY	4-WAY	PERFORATED	PERFORATED	PERFORATED	JET OUTLET
MAX PRESSURE DROP (IN WC)	0.1	0.1	0.1	0.1	0.1	0.1
MAX NC RATING	25	25	25	25	25	35
MATERIAL	STEEL	STEEL	STEEL	STEEL	STEEL	ALUMINUM
FINISH	WHITE	WHITE	WHITE	WHITE	WHITE	WHITE
REMARKS	1					1
REMARK LEGEND:						
1. OPPOSED BLADE DAMPER						



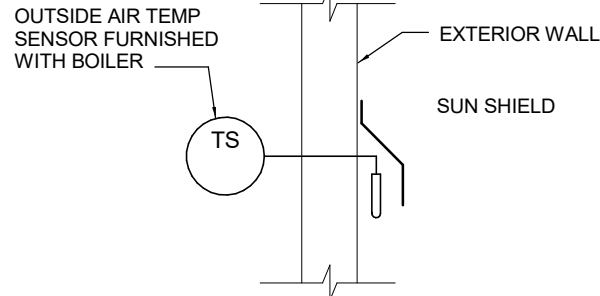
US Army Corps  
of Engineers®

[illegible]

US ARMY CORPS OF ENGINEERS LOUISVILLE DISTRICT LOUISVILLE, KY	DESIGNED BY:	ISSUE DATE:
	AEB	FEBRUARY 22, 2023
	KEVIN BY:	SOLUTION NO.:
	KEL	W912OR22R0040
JOHN C. GRIMBERG CO. ROCKVILLE, MD	CHECKED BY:	CONTRACT NO.:
	KEL	W912OR22R0040
	SUBMITTED BY:	
	SIZE:	
	ASND:	

UNITED STATES ARMY RESERVE CENTER, SALEM, VA  
TRAINING CENTER RENOVATION & ADDITION  
PZ # - 499678

SHEET ID  
M-621



NOT TO SCALE

**US Army Corps  
of Engineers ®**

SHEET ID

**M-701**