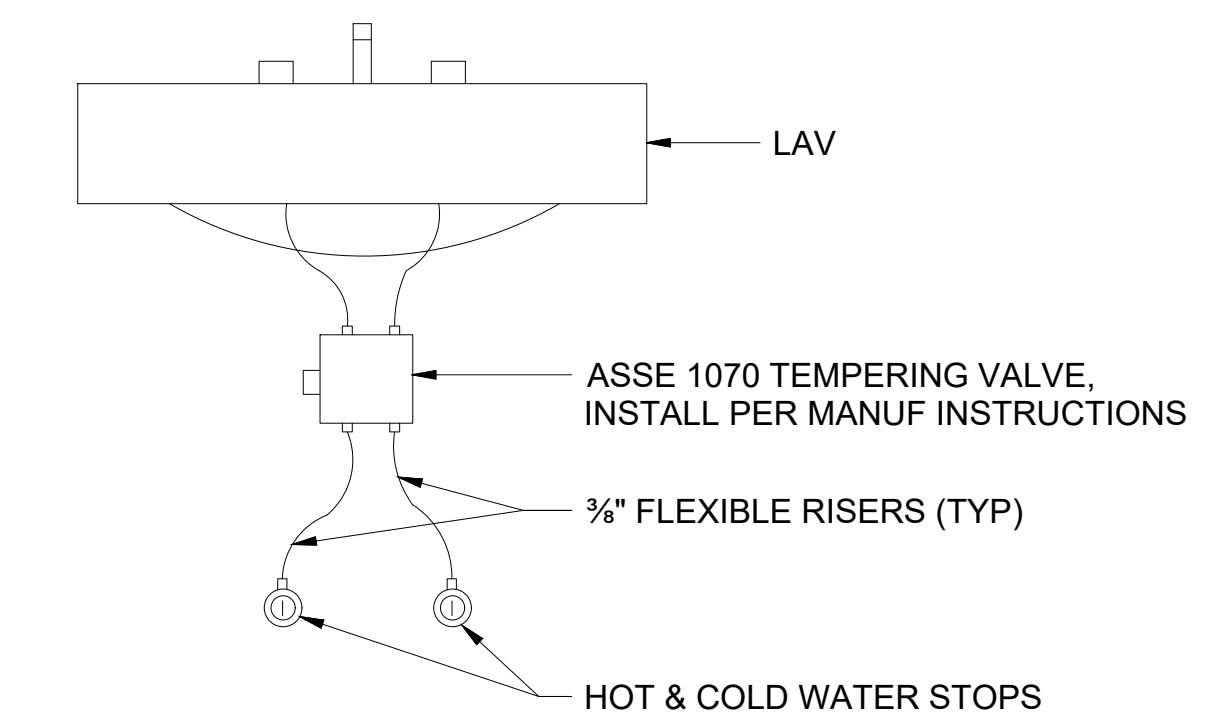
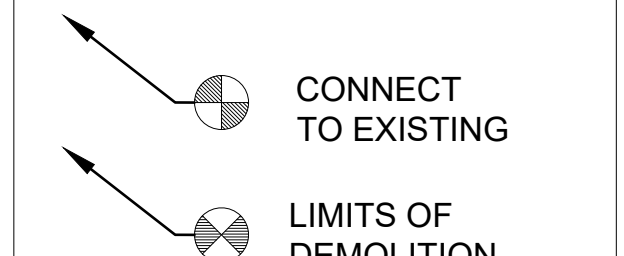


PLUMBING FIXTURE SCHEDULE:

WC-1	WATER CLOSET: AMERICAN STANDARD "CHAMPION 4" MODEL, 1.6 GPF WATERSAVING, VITREOUS CHINA ELONGATED SIPHON JET BOWL, FLOOR MOUNTED, WHITE EXTRA HEAVY DUTY SOLID PLASTIC SEAT WITH COVER, CHECK HINGE, ADA COMPLIANT WITH TRIP LEVER ON OPEN STALL SIDE (LEFT IF FACING WC).
L-1	AMERICAN STANDARD "LUCERNE" 0355.012 WHITE VITREOUS CHINA WALL HUNG HANDICAP LAVATORY, THREE HOLE MOUNT FOR 4" CENTERS, WITH MOEN 8413F05 CENTERSET CHROME FAUCET WITH SINGLE LEVER HANDLE, METAL GRID STRAINER, OFFSET PVC P-TRAP, FLEXIBLE TUBING SUPPLIES, COMPRESSION FITTINGS AND STOPS. PROVIDE TRUEBRO #102W PRE- MOLDED INSULATION ON BOTH WATER SUPPLIES AND DRAIN. PROVIDE WITH WALL CARRIER.
SH-1	SHOWER, AQUATIC BATH, MODEL 1363BFRF, 36x36x75 ONE-PIECE SHOWER WITH FOLDING SEAT ON LEFT SIDE, VERTICAL ENTRY BAR, L SHAPE HORIZONTAL GRAB BAR, AND HAND HELD SPRAYER AND SLIDE BAR. PROVIDE WITH PRESSURE BALANCING MIXING VALVE IN WALL, 2" BRASS SHOWER DRAIN WITH STRAINER, AND SHOWER CURTAIN WITH ROD. PROVIDE SHOWER SYSTEM WITH RIGHT HAND FIXTURE WALL AS INDICATED ON PLANS.
EWC-1:	ELECTRIC WATER COOLER, ELKAY MODEL LZS8L. ELKAY® WALL MOUNT ADA COOLER FILTERED REFRIGERATED LIGHT GRAY GRANITE. CHILLING CAPACITY OF 8.0 GPH (GALLONS PER HOUR) OF 50° F DRINKING WATER, BASED ON 80°F INLET WATER AND 90° F AMBIENT, PER ASHRAE 18 TESTING. FEATURES SHALL INCLUDE FILTERED, FURNISHED WITH FLEXI-GUARD® SAFETY BUBBLER. ELECTRONIC FRONT AND SIDE BUBBLER PUSHBAR ACTIVATION. PRODUCT SHALL BE WALL MOUNT (ON WALL), FOR INDOOR APPLICATIONS, SERVING 1 STATION(S). UNIT SHALL BE CERTIFIED TO UL 399 AND CAN/CSA C22.2 NO. 120. PROVIDE WITH WALL CARRIER.
FD	FLOOR DRAIN, ZURN MODEL Z415, DURA-COATED CAST IRON BODY WITH BOTTOM OUTLET, COMBINATION INVERTIBLE MEMBRANE CLAMP AND ADJUSTABLE COLLAR WITH SEEPAGE SLOTS. FOR MECHANICAL ROOM DRAINS NOT RECIEVING INDIRECT WASTE, FINISHED SPACES INCLUDING TOILET, SHOWER, LOCKER ROOMS, ETC., PROVIDE WITH TYPE B, ROUND, POLISHED NICKEL BRONZE, LIGHT DUTY HEEL PROOF STRAINER. ALL FLOOR DRAINS SHALL BE PROTECTED AGAINST LOSS OF TRAP SEAL BY EVAPORATION BY INSTALLATION OF ELASTOMERIC TRAP GUARD DRAIN INSERT, EQUAL TO PROSET SYSTEMS MODEL #TG.

LEGEND	
	BRANCH CONNECTION - BOTTOM OF MAIN
	BRANCH CONNECTION - SIDE OF MAIN
	BRANCH CONNECTION - TOP OF MAIN
	PIPE DOWN OR PIPE FROM BELOW
	PIPE UP OR PIPE FROM ABOVE
	DIRECTION OF FLOW
	DOMESTIC COLD WATER
	DOMESTIC HOT WATER
	DOMESTIC HOT WATER RECIRCULATING
	NATURAL GAS PIPING
	SANITARY SEWER, GREASE WASTE OR DRAIN
	SANITARY VENT
	CLEANOUT FLUSH WITH FLOOR
	OUTLET WITH P-TRAP
	WALL HYDRANT
	WATER HAMMER ARRESTER
	BALL VALVE
	AUTOMATIC GAS SHUT OFF VALVE, INTERLOCK WITH HOOD
	SHUTOFF VALVE IN VERTICAL
	CHECK VALVE
	T&P RELIEF VALVE
	BALANCING COCK
	UNION
	PRESSURE GAUGE AND GAUGE COCK
	THERMOMETER
	GAS PRESSURE REGULATOR
	RELIEF VALVE
	BACKFLOW PREVENTER (BFP)
	EXISTING (EQUIPMENT OR DUCTWORK/PIPING)
	DEMOLITION (EQUIPMENT, PIPING, DUCTWORK, ETC.)

ABBREVIATIONS	
AAV	AIR ADMITTANCE VALVE
ABV	ABOVE
AFF	ABOVE FINISHED FLOOR
BFF	BELOW FINISHED FLOOR
BTU	BRITISH THERMAL UNIT
BEL	BELOW
CLG	CEILING
CO	CLEANOUT
CONN	CONNECT CONNECTION
CW	COLD WATER
CONT	CONTINUED
DN	DOWN
EA	EACH
ELEV	ELEVATION
EWC	ELECTRIC WATER COOLER
F	DEGREES FAHRENHEIT
FD	FLOOR DRAIN
FIN	FINISHED
FLR	FLOOR
FR	FROM
FT	FEET
GPH	GALLONS PER HOUR
GPM	GALLONS PER MINUTE
GW	GREASE WASTE
HB	HOSE BIBB
HC	HANDICAPPED ACCESSIBLE
HW	HOT WATER
HP	HORSEPOWER
IN	INCH, INCHES
INV	INVERT
MAX	MAXIMUM
MBH	THOUSAND BTU PER HOUR
MIN	MINIMUM
SH	SHEET
TYP	TYPICAL
V	SANITARY VENT
VTR	VENT THRU ROOF
W	SANITARY WASTE
WCO	WALL CLEANOUT
WH	WALL HYDRANT
WHA	WATER HAMMER ARRESTER
ZVB	MEDICAL GAS ZONE VALVE BOX



TYPICAL TEMPERING VALVE FOR LAV'S



BALZER & ASSOCIATES
PLANNERS / ARCHITECTS
ENGINEERS / SURVEYORS

Roanoke / Richmond
Shenandoah Valley
New River Valley
www.balzer.cc
1208 Corporate Circle
Roanoke, VA 24018
540.772.9580



SALEM, VA



SALEM FIRE STATION #2
RENOVATION
PLUMBING LEGEND, SCHEDULES, AND DETAILS

415 ELECTRIC ROAD
SALEM, VIRGINIA 24153

DRAWN BY JNB
DESIGNED BY JNB
CHECKED BY JNB
DATE 2024-08-30
SCALE As indicated
REVISIONS

PLUMBING SPECIFICATIONS:

1. GENERAL PROVISIONS:

- 1.A. ALL WORK SHALL BE IN ACCORDANCE WITH THE 2018 VIRGINIA UNIFORM STATEWIDE BUILDING CODE, ALL FEDERAL, STATE, AND CITY CODES, ORDINANCES, AND STANDARDS.
- 1.B. THE PLANS ARE DIAGRAMMATIC IN NATURE AND BASED ON ONE MANUFACTURER'S EQUIPMENT. THEY ARE NOT INTENDED TO SHOW EVERY ITEM IN ITS EXACT LOCATION, THE EXACT DIMENSIONS, OR ALL THE DETAILS OF THE EQUIPMENT. VERIFY THE ACTUAL DIMENSIONS OF THE EQUIPMENT PROPOSED TO BE USED. INSTALLATION SHALL BE WITHIN THE LIMITATIONS IMPOSED BY THE ARCHITECTURAL, STRUCTURAL, HVAC, ELECTRICAL, AND PLUMBING REQUIREMENTS WITH ADEQUATE SPACE FOR MAINTENANCE.
- 1.C. GUARANTEE: ALL MATERIALS AND WORKMANSHIP SHALL BE GUARANTEED TO BE FREE FROM DEFECTS FOR A PERIOD OF ONE (1) YEAR FROM DATE OF ACCEPTANCE AND CONTRACTOR SHALL MAKE GOOD, WITHOUT ADDITIONAL COST TO THE OWNER, ANY DEFECTS WHICH MAY APPEAR WITHIN THAT PERIOD. MANUFACTURER'S WARRANTIES EXTENDING BEYOND ONE YEAR SHALL BE PROCESSED AND TURNED OVER TO THE OWNER.
- 1.D. MAJOR ITEMS ARE SHOWN ON THE PLANS. THE CONTRACTOR SHALL BE RESPONSIBLE FOR ALL INCIDENTAL ITEMS REQUIRED TO PROVIDE A COMPLETE AND FUNCTIONAL SYSTEM.
- 1.E. A TRADE NAMES AND CATALOG NUMBERS SHALL BE INTERPRETED AS ESTABLISHING A GENERAL DESIGN AND STANDARD OF QUALITY AND SHALL NOT BE CONSTRUED AS LIMITING COMPETITION, UNLESS STATED OTHERWISE. THE CONTRACTOR MAY USE ANY ARTICLE WHICH, IN HIS JUDGEMENT, AND WITH WRITTEN COMMENT FROM THE ARCHITECT/ENGINEER INDICATING NO OBJECTION, IS EQUAL OR SUPERIOR TO THAT SPECIFIED. DRAWINGS SHOWING CHANGES OR REVISIONS REQUIRED BY THE SUBSTITUTION FOR SPECIFIED ITEMS SHALL BE SUBMITTED WITH THE SHOP DRAWING DATA, AND THE COSTS OF ALL SUCH CHANGES SHALL BE BORNE BY THE CONTRACTOR.
- 1.F. SIMILAR ITEMS SHALL BE PROVIDED BY A SINGLE MANUFACTURER.
- 1.G. ALL REQUIRED WALL OR FLOOR OPENINGS SHALL BE COORDINATED WITH THE GENERAL CONTRACTOR AND/OR OTHER RELEVANT TRADES.
- 1.H. ALL PIPING SHALL BE INSTALLED ABOVE THE CEILING UNLESS INDICATED OTHERWISE. ALL WATER PIPING AND P-TRAPS SHALL BE INSTALLED WITHIN THE BUILDINGS INSULATION ENVELOPE OR BE PROVIDED WITH A FREEZE PROTECTION SYSTEM.
- 1.I. PROVIDE SUPPORTS TO RIGIDLY ATTACH ALL EQUIPMENT, APPURTENANCES AND PIPE AS REQUIRED FOR SUPPORT. PRIOR TO INSTALLATION OF HANGERS AND INSERTS, THE CONTRACTOR SHALL COORDINATE LOCATIONS AND REQUIREMENTS TO MINIMIZE CONFLICTS WITH OTHER BUILDING SYSTEMS. INSTALLATION OF PIPE HANGERS AND SUPPORTS SHALL BE IN STRICT ACCORDANCE WITH MANUFACTURERS STANDARDIZATION SOCIETY (MSS) STANDARDS SP-58, 69 AND 89.
- 1.J. THE CONTRACTOR SHALL MAKE FINAL CONNECTIONS TO ALL EQUIPMENT INDICATED TO BE FURNISHED BY OTHERS.

2. SUBMITTAL AND SHOP DRAWINGS:

- 2.A. SUBMIT MANUFACTURER'S CERTIFIED DATA RELATIVE TO ALL EQUIPMENT, PIPING, CONTROLS, ETC. REQUIRED FOR THE INSTALLATION OF THE PLUMBING AND FIRE PROTECTION SYSTEMS. SUBMIT FOR REVIEW ALL NECESSARY ENGINEERING, PRODUCT AND INSTALLATION DATA, SHOP DRAWINGS, SAMPLES ETC. FOR ALL EQUIPMENT, MATERIAL, AND SYSTEMS TO ASCERTAIN COMPLIANCE WITH THE TECHNICAL REQUIREMENTS OF THE CONTRACT DOCUMENTS.
- 2.B. SUBMIT A DIGITAL PDF OF ALL NECESSARY DATA, CUTS, MANUFACTURER'S SELECTIONS, CATALOGS, BULLETINS, INSTALLATION INSTRUCTIONS, DRAWINGS, DIAGRAMS, CURVES, ETC. CLEARLY INDICATE ON THE SUBMITTED DATA, THE MANUFACTURER'S NAME, PRODUCT NUMBER(S), OPTIONS, EQUIPMENT CAPACITY, DIMENSIONAL DATA, WEIGHTS, AND OTHER APPLICABLE TECHNICAL DATA FOR THE PROJECT.
- 2.C. TRADE NAMES, MANUFACTURERS, AND CATALOGUE NUMBERS ARE MENTIONED HEREIN AND ON THE DRAWINGS SOLELY IN ORDER TO ESTABLISH A STANDARD FOR THE TYPE, GENERAL DESIGN, AND QUALITY OF PRODUCT REQUIRED. OTHER PRODUCTS SIMILAR IN DESIGN OF EQUIVALENT QUALITY CAPABLE OF FITTING WITHIN THE SPACES ALLOCATED AND COMPLYING WITH THE DRAWINGS AND SPECIFICATIONS WILL BE CONSIDERED AFTER THE CONTRACT IS LET

UNLESS "PRIOR APPROVAL" REQUIREMENTS ARE SET FORTH IN THESE DOCUMENTS.

- 2.D. REVIEW OF SUBMITTALS AND SHOP DRAWINGS DOES NOT RELIEVE THE CONTRACTOR OF THE RESPONSIBILITY FOR FITTING THE EQUIPMENT IN THE SPACE ALLOTTED WITH SPACE FOR ALL CONNECTIONS AND SERVICING AND FOR THE COORDINATION OF THE WORK WITH WORK OF OTHER TRADES.
- 2.E. THE CONTRACTOR SHALL REVIEW ALL SUBMITTALS AND SHOP DRAWINGS AND INDICATE BY STAMP OR LETTER THAT HE HAS REVIEWED THEM, BEFORE FORWARDING THEM TO THE ARCHITECT AND/OR ENGINEER. SUBMITTALS AND DRAWINGS WILL BE RETURNED AFTER REVIEW INDICATING WHETHER EXCEPTIONS ARE TAKEN, THE SUBMITTAL RETURNED WITH CORRECTIONS, OR IS COMPLETELY REJECTED. RESUBMISSION OF REVISED SUBMITTALS AND SHOP DRAWINGS, IF REQUIRED, SHALL BE DONE BEFORE INSTALLATION AND CONSTRUCTION IS BEGUN.
- 2.F. CORRECTIONS OR COMMENTS MADE ON THE SUBMITTALS AND DRAWINGS DURING THIS REVIEW DOES NOT RELIEVE THE CONTRACTOR FROM COMPLIANCE WITH THE REQUIREMENTS OF THE CONTRACT DOCUMENTS. THIS REVIEW IS FOR GENERAL CONFORMANCE WITH THE DESIGN CONCEPT OF THE PROJECT AND GENERAL COMPLIANCE WITH THE INFORMATION GIVEN IN THE CONTRACT DOCUMENTS. THE CONTRACTOR IS RESPONSIBLE FOR CONFIRMING AND CORRELATING ALL QUANTITIES AND DIMENSIONS, FABRICATION PROCESSES, TECHNIQUES OF CONSTRUCTION, COORDINATING THE WORK WITH THAT OF ALL OTHER TRADES, AND PERFORMING WORK IN A SAFE AND SATISFACTORY MANNER. REVIEW OF THE SUBMITTALS SHALL NOT PERMIT ANY DEVIATION FROM PLANS AND SPECIFICATIONS.
- 3. AS-BUILT DRAWINGS:
 - 3.A. MAINTAIN DAILY UPDATED DRAWINGS SHOWING DEVIATIONS FROM CONSTRUCTION DOCUMENTS. AT THE END OF THE PROJECT, PROFESSIONALLY PREPARE AS-BUILT DRAWINGS AND SUBMIT DRAWINGS TO THE ARCHITECT/ENGINEER.
- 4. OPERATION AND MAINTENANCE MANUALS:
 - 4.A. UPON COMPLETION OF THE PROJECT, SUBMIT ALL OPERATION AND MAINTENANCE MANUALS, WARRANTIES, SPARE PARTS LIST, AS-BUILT DRAWINGS, TEST AND BALANCE REPORTS, AND LETTER OF GUARANTEE ALL BOUND IN THREE RING BINDERS, CLEARLY SHOWING WHICH EQUIPMENT WAS SUPPLIED TO THE JOB.
- 5. PIPING SPECIALTIES:
 - 5.A. ACCESS DOORS: ACCESS DOORS SHALL BE PROVIDED FOR ALL CONCEALED VALVES, CONTROLS, AND ANY OTHER EQUIPMENT OR MATERIALS REQUIRING INSPECTION OR MAINTENANCE. ACCESS DOORS SHALL BE FURNISHED FOR FLOORS, WALLS AND CEILINGS, OF ADEQUATE SIZE SO THAT CONCEALED ITEMS WILL BE READILY ACCESSIBLE FOR SERVICING OR FOR REMOVAL AND REPLACEMENT IF NECESSARY.
 - 5.B. PIPE ESCUTCHEONS: INSTALL PIPE ESCUTCHEONS ON EACH PIPE PENETRATION THRU FLOORS, WALLS PARTITIONS, AND CEILINGS WHERE PENETRATION IS EXPOSED TO VIEW AND ON EXTERIOR OF BUILDING. SECURE ESCUTCHEON TO PIPE OR INSULATION SO ESCUTCHEON COVERS PENETRATION HOLE, AND IS FLUSH WITH ADJOINING SURFACE. PROVIDE SHEET STEEL ESCUTCHEONS, SOLID OR SPLIT HINGED. FOR AREAS WHERE WATER AND CONDENSATION CAN BE EXPECTED TO ACCUMULATE, PROVIDE CAST BRASS OR SHEET BRASS ESCUTCHEONS, SOLID OR SPLIT HINGED.
 - 5.C. PIPE SLEEVES: INSTALL PIPE SLEEVES WHERE PIPING PASSES THROUGH WALLS, FLOORS, CEILINGS, AND ROOFS. DO NOT INSTALL SLEEVES THROUGH STRUCTURAL MEMBERS OF WORK, EXCEPT AS DETAILED ON DRAWINGS, OR AS REVIEWED BY ARCHITECT/ENGINEER. SIZE SLEEVES SO THAT PIPING AND INSULATION (IF ANY) WILL HAVE FREE MOVEMENT IN SLEEVE, INCLUDING ALLOWANCE FOR THERMAL EXPANSION; BUT NOT LESS THAN 2 PIPE SIZES LARGER THAN PIPING RUN. INSTALL LENGTH OF SLEEVE EQUAL TO THICKNESS OF CONSTRUCTION PENETRATED, AND FINISH FLUSH TO SURFACE; EXCEPT FLOOR SLEEVES. EXTEND FLOOR SLEEVES 1/4 INCH ABOVE LEVEL FLOOR FINISH, AND 3/4 INCH ABOVE FLOOR FINISH SLOPED TO DRAIN. PROVIDE TEMPORARY SUPPORT OF SLEEVES DURING PLACEMENT OF CONCRETE AND OTHER WORK AROUND SLEEVES, AND PROVIDE TEMPORARY CLOSURE TO PREVENT CONCRETE AND OTHER MATERIALS FROM ENTERING SLEEVES.
 - 5.D. WATER HAMMER ARRESTORS (WHA): PROVIDE AT ALL FAST OPENING WATER VALVES INCLUDING WATER CLOSETS, URINALS, AND CLOTHES WASHERS. SHALL BE ZURN MODEL 1260XL OR EQUIVALENT AND SHALL BE SIZED AND PLACED WITHIN THE SYSTEM AS RECOMMENDED BY THE MANUFACTURER.

6. INSULATION:

- 6.A. FLAME/SMOKE RATINGS: PROVIDE COMPOSITE PLUMBING INSULATION (INSULATION, JACKETS, COVERINGS, SEALERS, MASTICS AND ADHESIVES) WITH FLAME-SPREAD RATING OF 25 OR LESS, AND SMOKE-DEVELOPED RATING OF 50 OR LESS, AS TESTED BY ASTM E84 METHOD. INSULATION SHALL BE LABELED BY THE MANUFACTURER. THE LABEL SHALL INDICATE THE INSULATING VALUE, FLAME SPREAD AND SMOKE-DEVELOPED RATING.
- 6.B. INSTALLATION: INSULATION SHALL BE APPLIED IN ACCORDANCE WITH MANUFACTURER'S RECOMMENDATIONS USING ONLY ADHESIVES, MASTICS AND PLUMBING FASTENERS APPROVED BY THE INSULATION MANUFACTURER. INSULATION SHALL NOT BE APPLIED UNTIL AFTER THE EQUIPMENT HAS BEEN TESTED WITH RESULTS ACCEPTABLE TO THE ARCHITECT/ENGINEER. INSULATION WITH A VAPOR BARRIER JACKET SHALL BE APPLIED WITH A CONTINUOUS, UNBROKEN VAPOR SEAL AND ALL JOINTS SHALL BE SEALED WITH A VAPOR BARRIER ADHESIVE UNLESS OTHERWISE INDICATED. STAPLES, STICK CLIPS AND HANGERS SHALL BE VAPOR SEALED WHERE THEY PUNCTURE VAPOR BARRIER JACKETS.
- 6.C. MATERIALS:
 - 6.C.A. GLASS FIBER PIPE INSULATION: HEAVY DENSITY PREFORMED PIPE INSULATION WITH OPERATING TEMPERATURE RANGE OF -60 DEGREES F TO 350 DEGREES F, THERMAL CONDUCTIVITY "K"=0.24 BTU-IN/HOUR-SF-DEG F AT 100 DEGREES F. FACTORY APPLIED JACKET (ASJ) SHALL CONSIST OF WHITE KRAFT PAPER BONDED TO ALUMINUM FOIL AND REINFORCED WITH GLASS FIBER YARN. EQUAL TO OWENS-CORNING ASJ.
 - 6.C.B. CELLULAR FOAM PIPE INSULATION: TUBULAR, FLEXIBLE, FIRE RESISTANT INSULATION WITH OPERATING TEMPERATURE RANGE OF -40 DEGREES F TO 220 DEGREES F, THERMAL CONDUCTIVITY "K"=0.27 BTU-IN/HOUR-SF-DEG F AT 75 DEGREES F. NO JACKET REQUIRED. EQUAL TO ARMSTRONG ARMAFLEX AP.
 - 6.C.C. A POLYETHYLENE PIPE INSULATION: INSULATION MATERIALS CORPORATION OF AMERICA (MCOA), FLEXIBLE CLOSED CELL POLYETHYLENE TUBING, ASTM C534, "K"=0.24 AT 75 DEGREES F, SERVICE TEMPERATURE -110F TO 210F. NO JACKET REQUIRED.
- 6.D. OMIT INSULATION ON EXPOSED PLUMBING FIXTURE RUNOUTS FROM FACES OF WALL OR FLOOR TO FIXTURE; ON UNIONS, FLANGES, STRAINERS, FLEXIBLE CONNECTIONS, AND EXPANSION JOINTS.
- 6.E. COVER VALVES, FITTINGS AND SIMILAR ITEMS IN EACH PIPING SYSTEM WITH EQUIVALENT THICKNESS AND COMPOSITION OF INSULATION AS APPLIED TO ADJOINING PIPE RUN.
- 6.F. ALL DOMESTIC WATER PIPING ABOVE GROUND INCLUDING COLD, HOT, AND HOT WATER RE-CIRCULATING PIPING SHALL BE INSULATED WITH A MINIMUM 1/2" THICK INSULATION.
- 7. PLUMBING PIPING:
 - 7.A. DOMESTIC WATER PIPING SHALL BE COPPER TUBE AND FITTINGS IN ACCORDANCE WITH ASTM B88, TYPE L HARD DRAWN COPPER. JOINTS SHALL BE MADE WITH LEAD FREE SOLDER.
 - 7.B. STORM, SOIL, WASTE, AND VENT PIPING BELOW GRADE SHALL BE SCHEDULE 40 PVC PIPE AND FITTINGS. PVC SCHEDULE 40 PIPE SHALL BE IRON PIPE SIZE (IPS) CONFORMING TO ASTM D 1785. INJECTION MOLDED PVC SCHEDULE 40 FITTINGS SHALL CONFORM TO ASTM D 2466. PIPE AND FITTINGS SHALL BE MANUFACTURED AS A SYSTEM AND BE THE PRODUCT OF ONE MANUFACTURER. PIPE AND FITTINGS SHALL CONFORM TO NSF INTERNATIONAL STANDARD 61 AND THE HEALTH-EFFECTS PORTION OF NSF STANDARD 14.
 - 7.C. STORM, SOIL, WASTE, AND VENT PIPING ABOVE GRADE SHALL BE HUBLESS CAST IRON TYPE DESIGNED FOR SAID APPLICATION. HUBLESS CAST IRON PIPE AND FITTINGS SHALL BE MANUFACTURED FROM GRAY CAST IRON AND SHALL CONFORM TO ASTM A 888 AND CISPI STANDARD 301. ALL PIPE AND FITTINGS SHALL BE MARKED WITH THE COLLECTIVE TRADEMARK OF THE CAST IRON SOIL PIPE INSTITUTE® AND LISTED BY NSF® INTERNATIONAL. HUBLESS COUPLINGS SHALL CONFORM TO CISPI STANDARD 310, SHALL BE MANUFACTURED IN THE UNITED STATES, AND BE CERTIFIED BY NSF® INTERNATIONAL.
 - 7.D. CONDENSATE DRAINS SHALL BE TYPE L HARD DRAWN COPPER. JOINTS SHALL BE MADE WITH LEAD FREE SOLDER.
 - 7.E. SLOPE ALL DRAIN LINES AT 1/4 INCH PER FOOT FOR

SIZES LESS THAN 4 INCHES. SLOPE AT 1/8 INCH PER FOOT FOR SIZES 4 INCH AND LARGER.

- 7.F. SOIL, WASTE, AND VENT PIPING BELOW GRADE SHALL BE A MINIMUM OF 2 INCH AND SHALL BE PROVIDED WITH METALLIC TRACING/DETECTION WIRE.
- 7.G. VENTS SHALL EXTEND A MINIMUM OF 12 INCHES ABOVE THE ROOF. ROOF FLASHING SHALL BE PROVIDED AND COORDINATED WITH THE GENERAL AND ROOFING CONTRACTORS.
- 7.H. TRENCHING AS REQUIRED FOR UNDERGROUND PIPING SHALL BE GRADED TO UNIFORM PITCH AND SHALL BE NO WIDER THAN NECESSARY FOR PIPING INSTALLATION. CLEAN BACKFILL SHALL BE USED AND THOROUGHLY TAMPED IN LAYERS NOT EXCEEDING 6 INCHES TO A MINIMUM DEPTH OF 1 FOOT ABOVE PIPE. COMPACTED BACKFILL SHALL BE USED FOR THE ENTIRE DEPTH OF EXCAVATION UNDER SLAB ON GRADE CONSTRUCTION.
- 8. PLUMBING FIXTURES, PUMPS, AND WATER HEATERS SHALL BE PROVIDED AND INSTALLED AS PER THE PLUMBING FIXTURE SCHEDULE. ALL EXPOSED FIXTURE SUPPLIES AND WASTE LINES SHALL BE CHROME PLATED. NO EXPOSED COPPER, PVC, AND/OR CAST IRON IS ALLOWED.
- 9. CLEANOUTS SHALL BE THE SAME SIZE AS LINE SERVED, BUT NOT LARGER THAN 4 INCHES, AND SHALL BE PROVIDED AT THE BASE OF EACH SOIL AND WASTE STACK, AT ALL POINTS WHERE DIRECTION CHANGE IS MORE THAN 45 DEGREES, AT MINIMUM INTERVALS OF 50 FEET FOR 4 INCH AND SMALLER PIPING, AT MINIMUM INTERVALS OF 100 FEET FOR PIPING LARGER THAN 4 INCHES, AS REQUIRED BY CODE AND AS INDICATED ON THE DRAWINGS. COVERS SHALL BE SET FLUSH WITH FLOOR OR WALL.
- 10. PLUMBING VALVES
 - 10.A. PROVIDE SHUT-OFF VALVE AND UNION OR EQUIVALENT AT EACH HOT AND COLD WATER EQUIPMENT CONNECTION. PROVIDE SHUTOFF VALVE ON EACH BRANCH OR RISER THAT SERVES TWO OR MORE PLUMBING FIXTURES.
 - 10.B. GATE VALVES 2-1/2 INCHES AND SMALLER: ALL BRONZE, RISING STEM, SOLID WEDGE DISC. STOCKHAM B-100 OR B-108.
 - 10.C. GLOBE VALVES: ALL BRONZE, RENEWABLE COMPOSITION DISC. STOCKHAM B-16 OR B-14-T.
 - 10.D. CHECK VALVES IN HORIZONTAL PIPES: 2 INCHES AND SMALLER: ALL BRONZE, REGRINDING BRONZE DISC, HORIZONTAL SWING, Y-PATTERN. STOCKHAM B-3190R B-309.
 - 10.E. CHECK VALVES IN VERTICAL PIPES AND PUMP DISCHARGE: SILENT CHECK VALVE WITH SEMI-STEEL BODY, BRONZE TRIM AND STAINLESS STEEL SPRING. METRAFLEX 700 SERIES.
 - 10.F. BALL VALVES MAY BE USED IN LIEU OF GATE VALVES 2 INCHES AND SMALLER. BALL VALVES SHALL HAVE BRONZE BODY, BRONZE BALL AND TFE SEATS AND SEALS. STOCKHAM S-216BRRT OR S-216BRRS.
- 11. CLEANING AND TESTING
 - 11.A. ALL WATER PIPING, VALVES, ETC. SHALL BE THOROUGHLY FLUSHED OF FOREIGN MATTER AND TESTED FOR LEAKS IN ACCORDANCE WITH THE PLUMBING AND BUILDING CODE, LATEST EDITION. ANY LEAKAGE SHALL BE REPAIRED. DISINFECT DOMESTIC WATER PIPING INCLUDING WATER SERVICE PIPING IN ACCORDANCE WITH AWWA C601.
 - 11.B. ALL DRAIN, WASTE AND VENT PIPING SHALL BE TESTED FOR LEAKS IN ACCORDANCE WITH THE PLUMBING AND BUILDING CODE CODE, LATEST EDITION. NO VISIBLE DROP IN WATER LEVEL WILL BE ACCEPTABLE.

END OF SPECIFICATIONS.



BALZER & ASSOCIATES

PLANNERS / ARCHITECTS
ENGINEERS / SURVEYORS

Roanoke / Richmond
Shenandoah Valley
New River Valley

www.balzer.cc

1208 Corporate Circle
Roanoke, VA 24018
540.772.9580



SALEM VA



SALEM FIRE STATION #2

RENOVATION

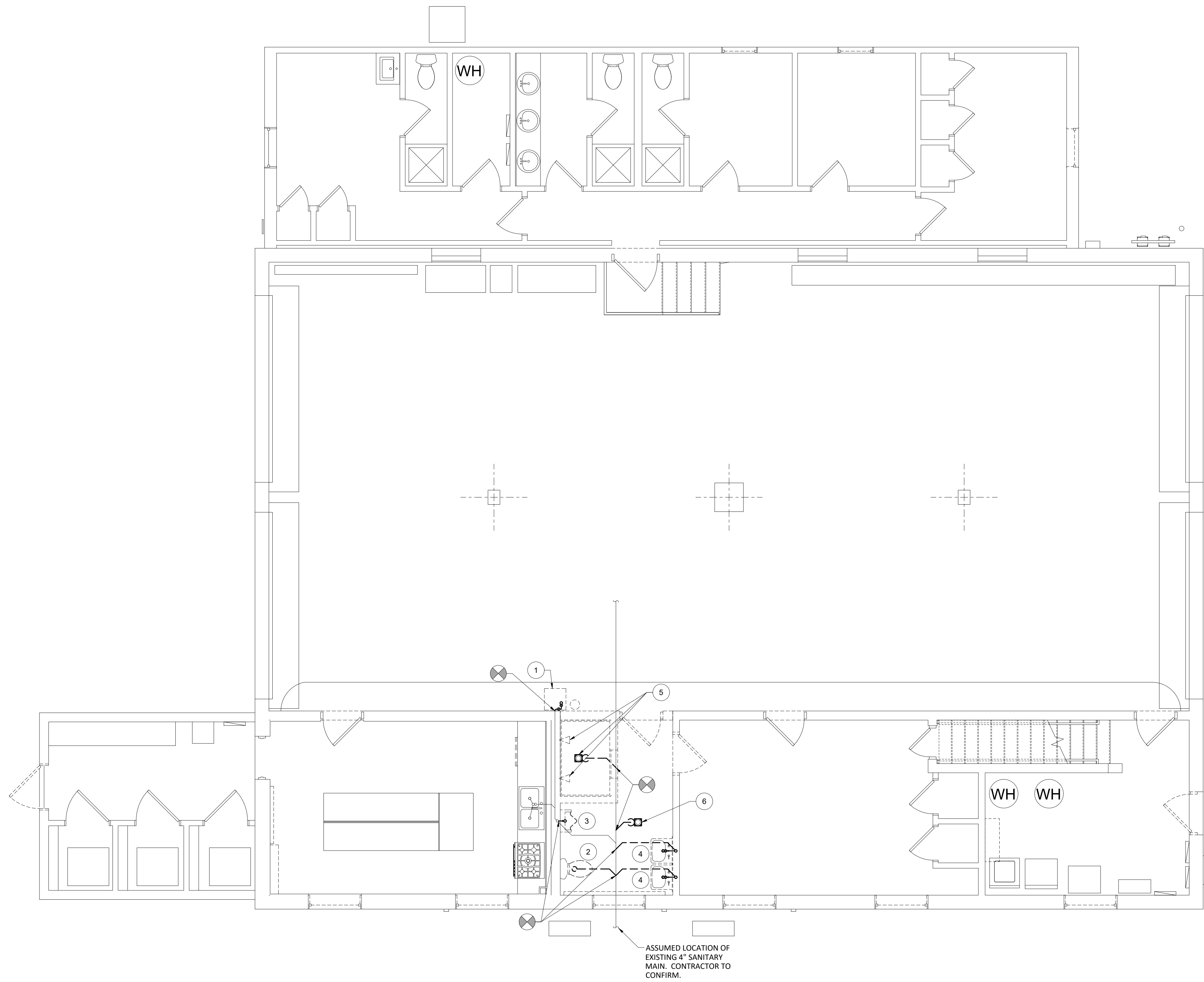
PLUMBING SPECIFICATIONS

DRAWN BY JNB
DESIGNED BY JNB
CHECKED BY JNB
DATE 2024-08-30
SCALE As indicated
REVISIONS

415 ELECTRIC ROAD
SALEM, VIRGINIA 24153

PR1.02

PROJECT NO 03220052.01



1 PLUMBING DEMOLITION PLAN - 1ST FL
 PR2.01 SCALE = 1/4"=1'-0"

KEYED NOTES:

1. CONTRACTOR SHALL VERIFY ALL EXISTING CONDITIONS PRIOR TO BIDDING.

KEYED NOTES:

1. EXISTING WATER COOLER TO BE REMOVED IN ITS ENTIRETY. REMOVE EXISTING WASTE AND WATER PIPING AND CAP AT WALL.
2. EXISTING FLOOR MOUNTED WATER CLOSET AND ASSOCIATED FLUSH VALVE TO BE REMOVED IN ITS ENTIRETY. REMOVE ASSOCIATED BRANCH PIPING BACK TO MAIN AND CAP.
3. EXISTING URINAL AND ASSOCIATED FLUSH VALVE TO BE REMOVED IN ITS ENTIRETY. REMOVE ASSOCIATED BRANCH PIPING BACK TO MAIN AND CAP.
4. EXISTING LAVATORY TO BE REMOVED IN ITS ENTIRETY. REMOVE ASSOCIATED BRANCH PIPING BACK TO MAIN AND CAP.
5. EXISTING SHOWER HEADS (X2) AND SHOWER DRAINS TO BE REMOVED IN THEIR ENTIRETY. REMOVE ASSOCIATED BRANCH PIPING BACK TO MAIN AND CAP.
6. EXISTING FLOOR DRAIN TO BE REMOVED. REMOVE WASTE PIPING BACK TO MAIN AND CAP.



BALZER & ASSOCIATES
 PLANNERS / ARCHITECTS
 ENGINEERS / SURVEYORS
 Roanoke / Richmond
 Shenandoah Valley
 New River Valley
 www.balzer.cc
 1208 Corporate Circle
 Roanoke, VA 24018
 540.772.9580



SALEM VA



SALEM FIRE STATION #2
 RENOVATION
 PLUMBING DEMOLITION PLAN - FIRST FLOOR

415 ELECTRIC ROAD
 SALEM, VIRGINIA 24163

DRAWN BY JNB
 DESIGNED BY JNB
 CHECKED BY JNB
 DATE 2024-08-30
 SCALE As indicated
 REVISIONS

PR2.01
 PROJECT NO 03220052.01



BALZER & ASSOCIATES
 PLANNERS / ARCHITECTS
 ENGINEERS / SURVEYORS

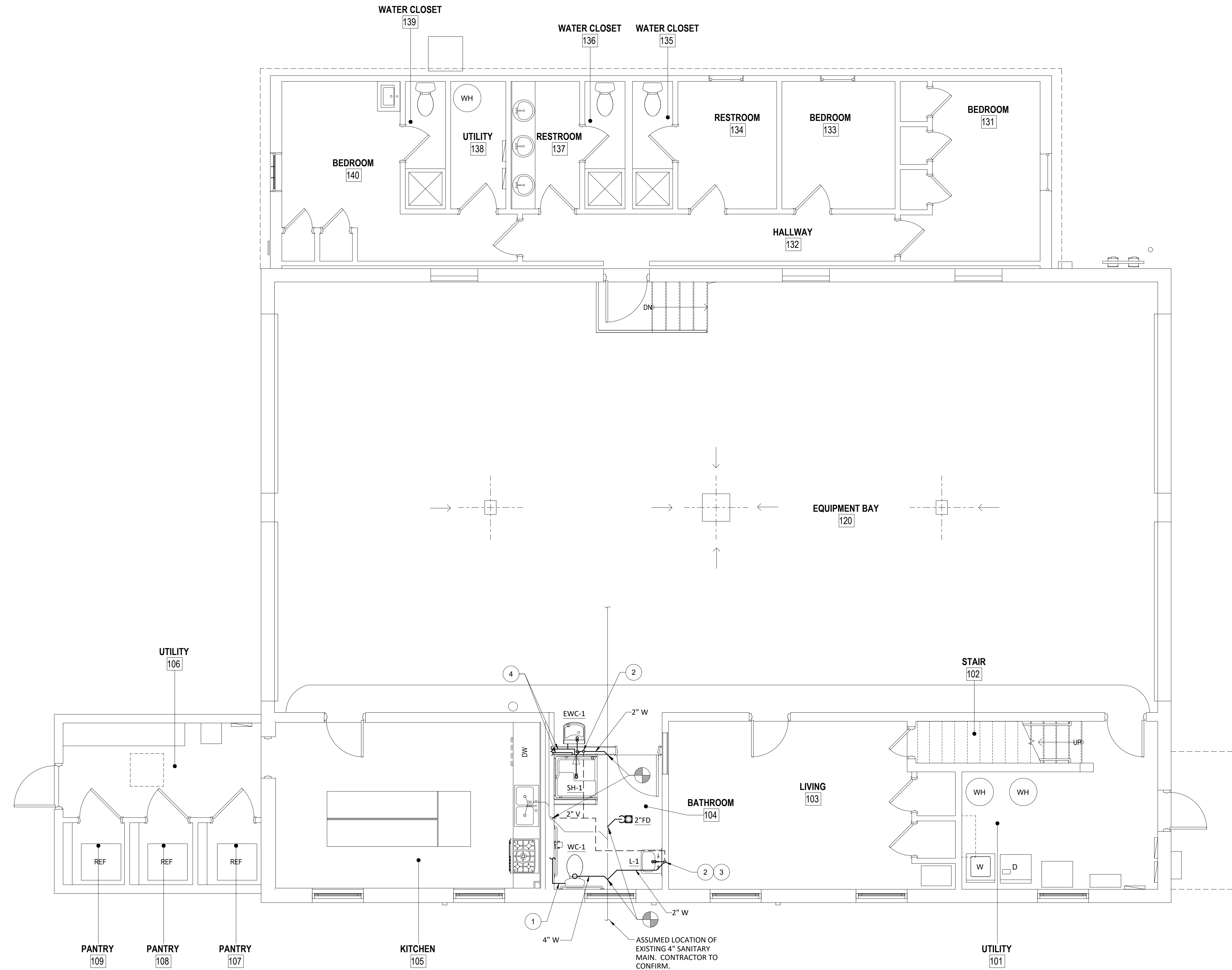
Roanoke / Richmond
 Shenandoah Valley
 New River Valley

www.balzer.cc

1208 Corporate Circle
 Roanoke, VA 24018
 540.772.9580



SALEM VA



KEYED NOTES:

1. CONTRACTOR SHALL VERIFY ALL EXISTING CONDITIONS PRIOR TO BIDDING.

KEYED NOTES:

1. EXTEND 1/2" CW FROM EXISTING MAIN IN PLUMBING CHASE TO NEW WATER CLOSET. PROVIDE WALL STOP.
2. 1-1/2" VENT AND 2" WASTE DOWN.
3. EXTEND 1/2" CW AND 1/2" HW TO NEW LAVATORY FROM REMOVED SINK.
4. EXTEND 1/2" CW AND 1/2" FROM EXISTING MAINS IN PLUMBING CHASE TO SHOWER AND CONNECT 1/2" CW TO NEW WATER COOLER.

1 PLUMBING NEW WORK PLAN - 1ST FL
 PR3.01 SCALE = 1/4"=1'-0"

SALEM FIRE STATION #2

RENOVATION

PLUMBING NEW WORK PLAN - FIRST FLOOR

415 ELECTRIC ROAD
 SALEM, VIRGINIA 24163

DRAWN BY JNB
 DESIGNED BY JNB
 CHECKED BY JNB
 DATE 2024-08-30
 SCALE As indicated
 REVISIONS

PR3.01
 PROJECT NO 03220052.01