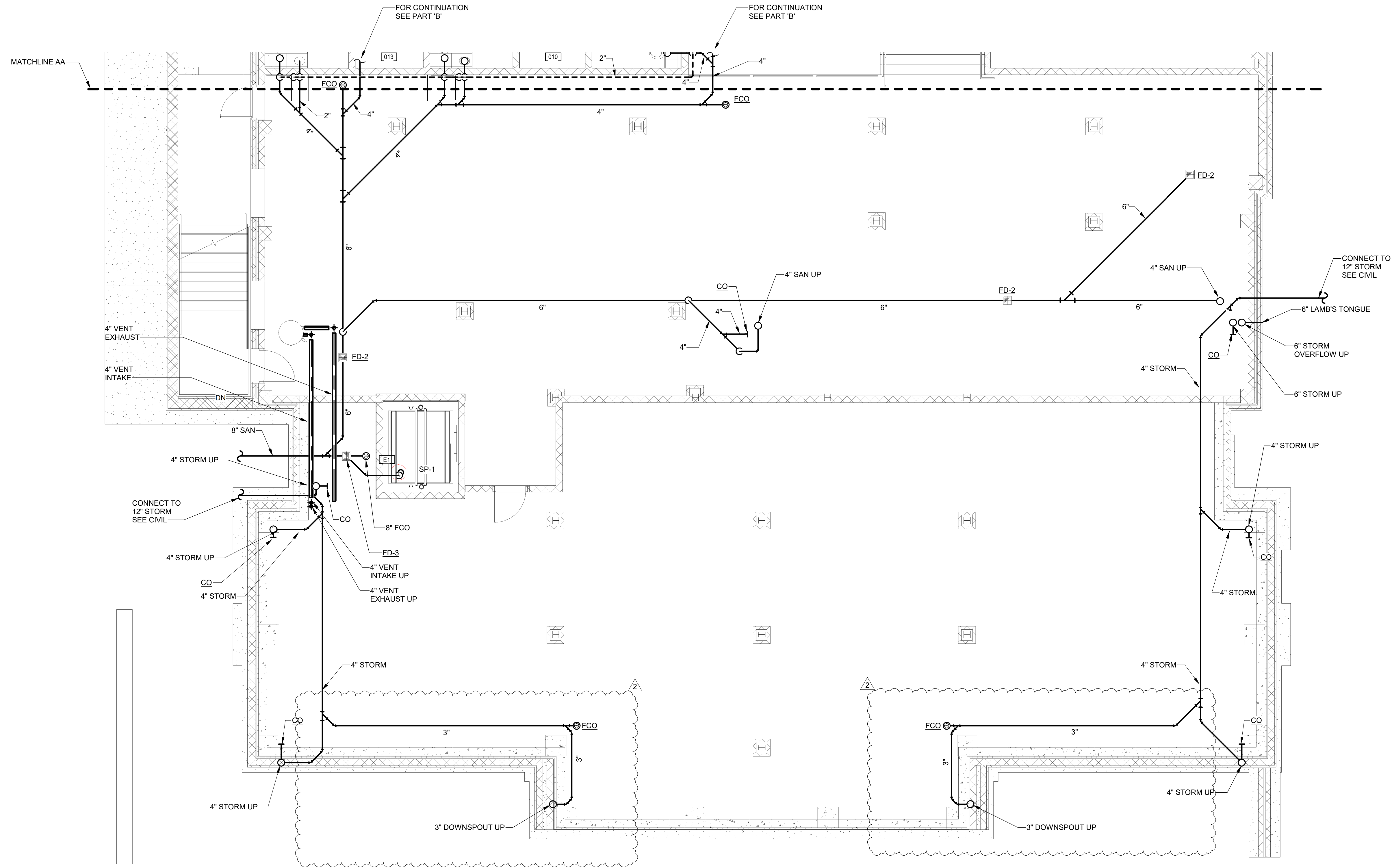


ARCHITECTURAL PARTNERS

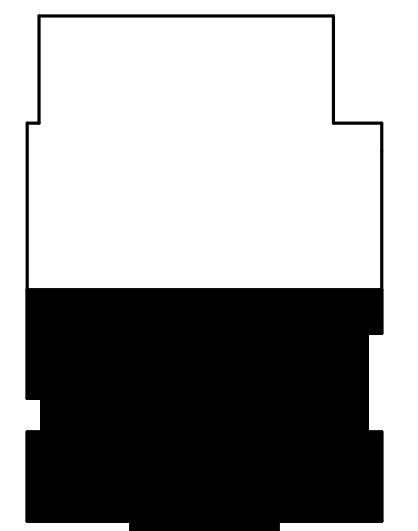
10 9th Street
Lynchburg, Virginia 24504
P:434-846-8456
F:434-846-4534
www.architecturalpartners.com

BOTETOURT COUNTY
NEW CIRCUIT COURTHOUSE
1 WEST MAIN ST. #120, FINCASTLE, VA 24090 PROJECT NO.: 24131



SANITARY, VENT AND STORM BASEMENT FLOOR PLAN PART A

3/16" = 1'-0"



KEY PLAN



3/16" = 1'-0"



MASTER ENGINEERS & DESIGNERS
904 Lakeside Drive, Lynchburg VA 24501
434-846-1350 Fax: 434-846-1351

BID SET



WRITTEN DIMENSIONS ON THESE DRAWINGS SHALL TAKE PRECEDENCE OVER SCALED DIMENSIONS. CONTRACTORS SHALL VERIFY AND BE RESPONSIBLE FOR ALL DIMENSIONS AND CONDITIONS ON THE JOB AND THIS OFFICE MUST BE NOTIFIED OF ANY VARIATIONS FROM THE DIMENSIONS AND CONDITIONS SHOWN BY THESE DRAWINGS.

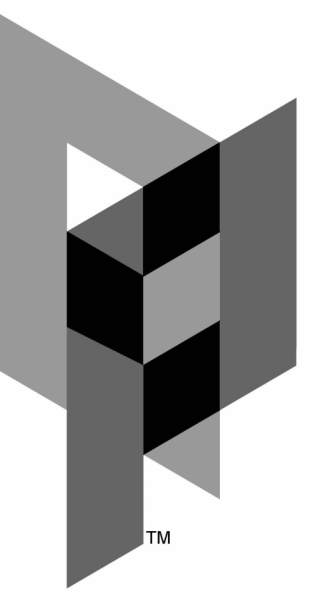
DATE: 2024-10-18
DESIGNED: CLS/WJC
DRAWN: WJC
CHECKED: CLS
REVISIONS:
2 11-07-2024 ADDENDUM #2

SANITARY, VENT AND STORM BASEMENT FLOOR PLAN PART A

P2.01.a

11/7/2024 4:19:54 PM

© 2018 ARCHITECTURAL PARTNERS, P.C.



ARCHITECTURAL PARTNERS

10 9th Street
Lynchburg, Virginia 24504
P: 434-846-8456
F: 434-846-4534
www.architecturalpartners.com

BOTETOURT COUNTY
NEW CIRCUIT COURTHOUSE
1 WEST MAIN ST. #120, FINCASTLE, VA 24090 PROJECT NO.: 24131

BID SET

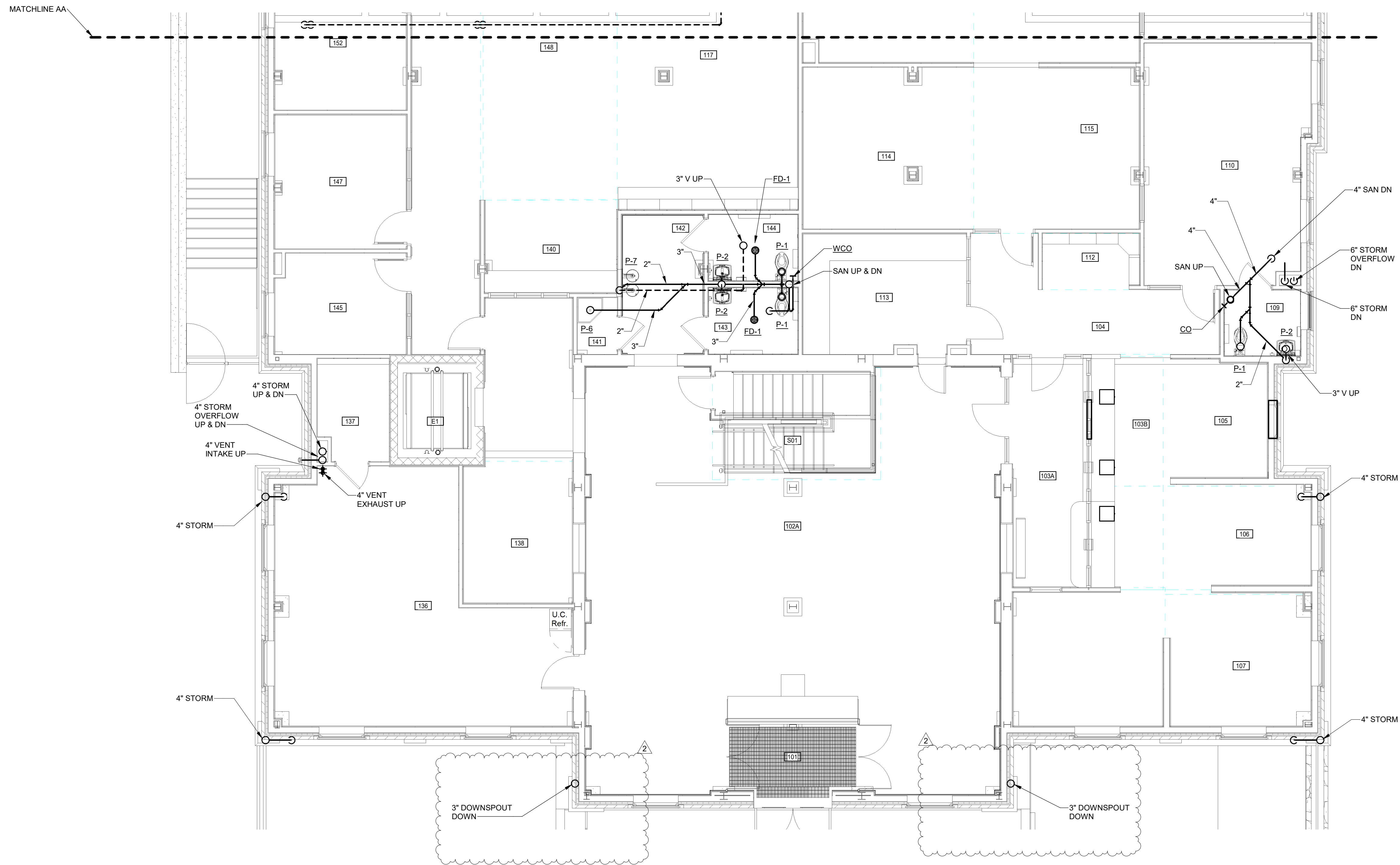


WRITTEN DIMENSIONS ON THESE DRAWINGS SHALL TAKE PRECEDENCE OVER SCALED DIMENSIONS. CONTRACTORS SHALL VERIFY DIMENSIONS AND CONDITIONS ON THE JOB AND THIS OFFICE MUST BE NOTIFIED OF ANY VARIATIONS FROM THE DIMENSIONS AND CONDITIONS SHOWN BY THESE DRAWINGS.

DATE: 2024-10-18
DESIGNED: CLS/WJC
DRAWN: WJC
CHECKED: CLS
REVISIONS: 2 11-07-2024 ADDENDUM #2

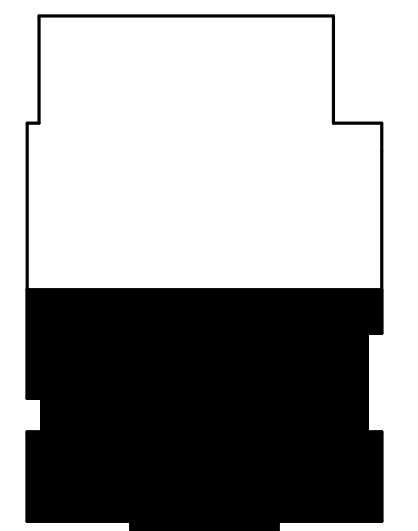
SANITARY, VENT AND STORM FIRST FLOOR PLAN PART A

P2.02.a



SANITARY, VENT AND STORM FIRST FLOOR PLAN PART A

3/16" = 1'-0"



KEY PLAN

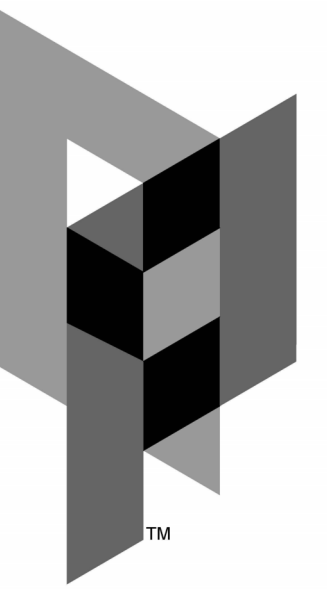


3/16" = 1'-0"



904 Lakeside Drive, Lynchburg VA 24501
434-846-1350 Fax: 434-846-1351

CCH



ARCHITECTURAL PARTNERS

10 9th Street
Lynchburg, Virginia 24504
p:434-846-8456
f:434-846-4534
www.architecturalpartners.com

BOTETOURT COUNTY
NEW CIRCUIT COURTHOUSE
1 WEST MAIN ST. #120, FINCASTLE, VA 24090 PROJECT NO.: 24131

BID SET

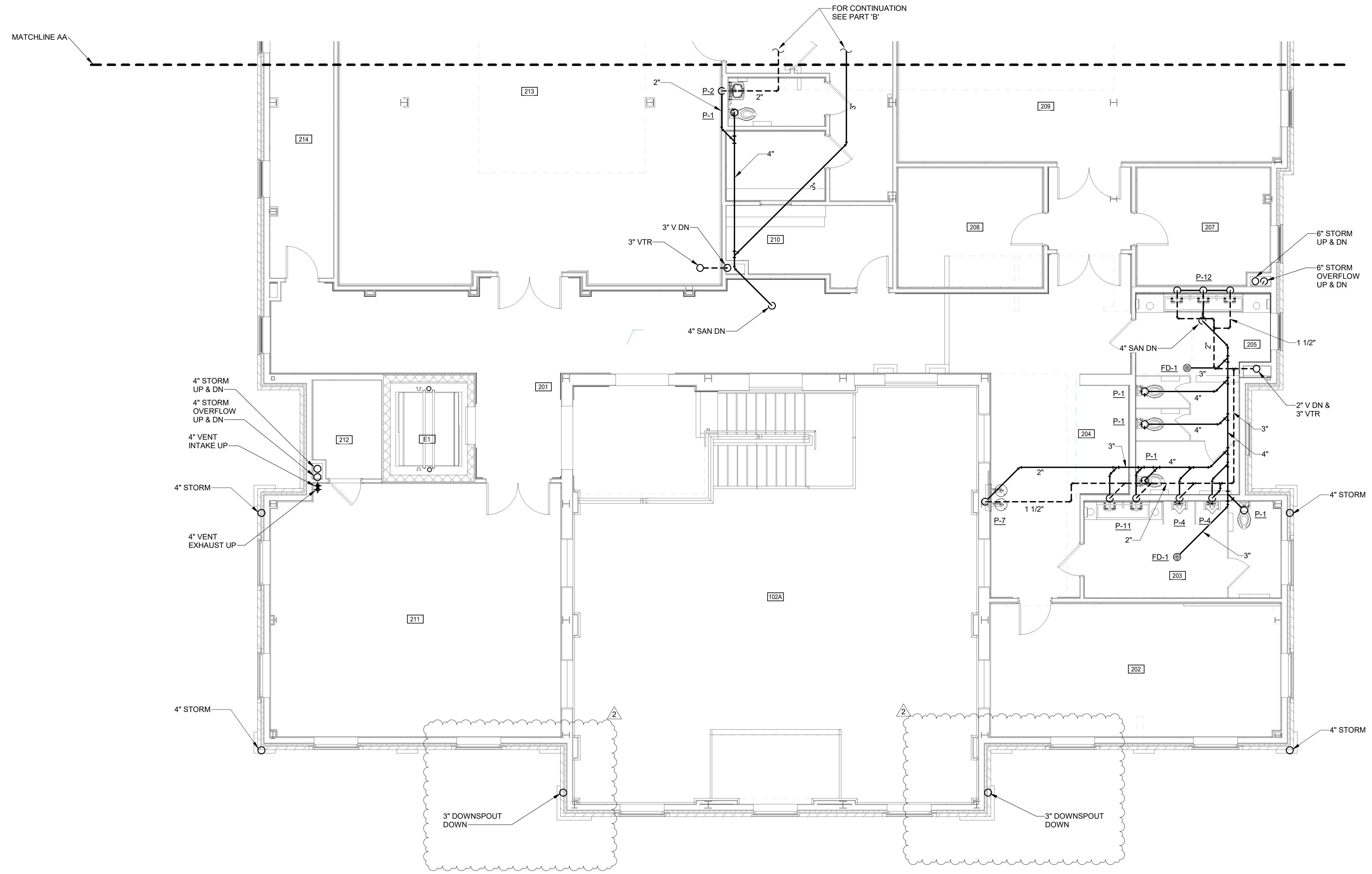


WRITTEN DIMENSIONS ON THESE DRAWINGS SHALL TAKE PRECEDENCE OVER SCALED DIMENSIONS. CONTRACTORS SHALL VERIFY DIMENSIONS AND CONDITIONS ON THE JOB AND THIS OFFICE MUST BE NOTIFIED OF ANY VARIATIONS FROM THE DIMENSIONS AND CONDITIONS SHOWN BY THESE DRAWINGS.

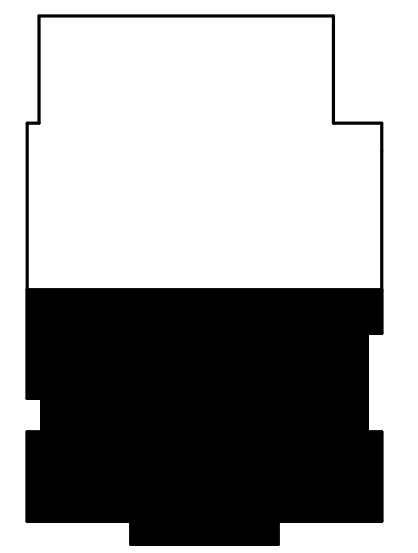
DATE: 2024-10-18
DESIGNED: CLS/WJC
DRAWN: WJC
CHECKED: CLS
REVISIONS: 2 11-07-2024 ADDENDUM #2

SANITARY, VENT AND STORM FLOOR PLAN PART A

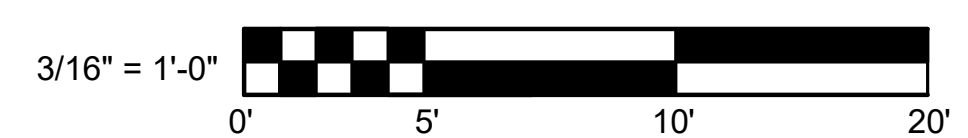
P2.03.a



 SANITARY, VENT AND STORM SECOND FLOOR PLAN PART A
3/16" = 1'-0"



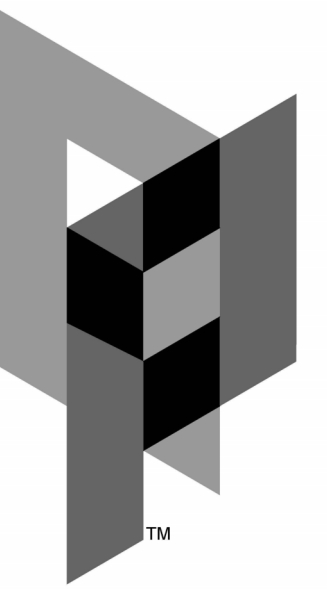
KEY PLAN



 **MASTER**
ENGINEERS & DESIGNERS
904 Lakeside Drive, Lynchburg VA 24501
423-289 434-846-1350 Fax: 434-846-1351

CCH

11/7/2024 4:20:01 PM



ARCHITECTURAL PARTNERS

10 9th Street
Lynchburg, Virginia 24504
P: 434-846-8456
F: 434-846-4534
www.architecturalpartners.com

BOTETOURT COUNTY
NEW CIRCUIT COURTHOUSE
1 WEST MAIN ST. #120, FINCASTLE, VA 24090 PROJECT NO.: 24131

BID SET

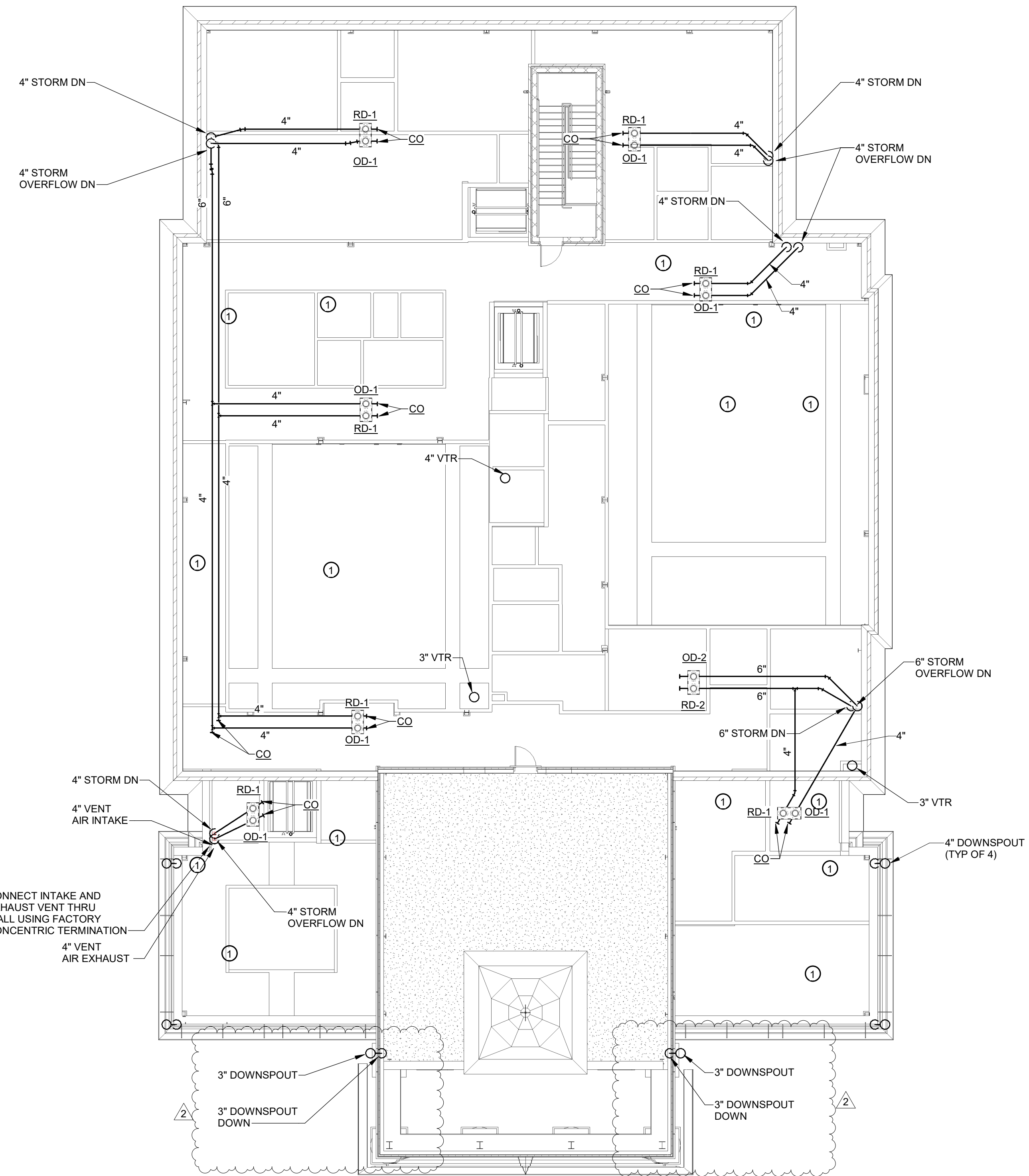


WRITTEN DIMENSIONS ON THESE DRAWINGS SHALL TAKE PRECEDENCE OVER SCALED DIMENSIONS. CONTRACTORS SHALL VERIFY AND BE RESPONSIBLE FOR ALL DIMENSIONS AND CONDITIONS ON THE JOB AND THIS OFFICE MUST BE NOTIFIED OF ANY VARIATIONS FROM THE DIMENSIONS AND CONDITIONS SHOWN BY THESE DRAWINGS.

DATE: 2024-10-18
DESIGNED: CLS/WJC
DRAWN: WJC
CHECKED: CLS
REVISIONS:
2 11-07-2024 ADDENDUM #2

PLUMBING ROOF PLAN

P2.04



PLAN NOTES

- 1 STORM AND OVERFLOW DRAIN PIPING MUST BE SUSPENDED FROM ROOF STRUCTURE BEGINNING AT THE HIGHEST POSSIBLE ELEVATION TO ALLOW FOR SLOPE NOT LESS THAN 1/8" PER FOOT. ROUTE ALL CONTINUING DRAIN PIPING AS HIGH AS POSSIBLE. COORDINATE WITH ALL OTHER TRADES.

CONNECT INTAKE AND EXHAUST VENT THRU WALL USING FACTORY CONCENTRIC TERMINATION



PLUMBING ROOF PLAN

3/32" = 1'-0"



KEY PLAN



904 Lakeside Drive, Lynchburg VA 24501
434-846-1350 Fax: 434-846-1351

CCH