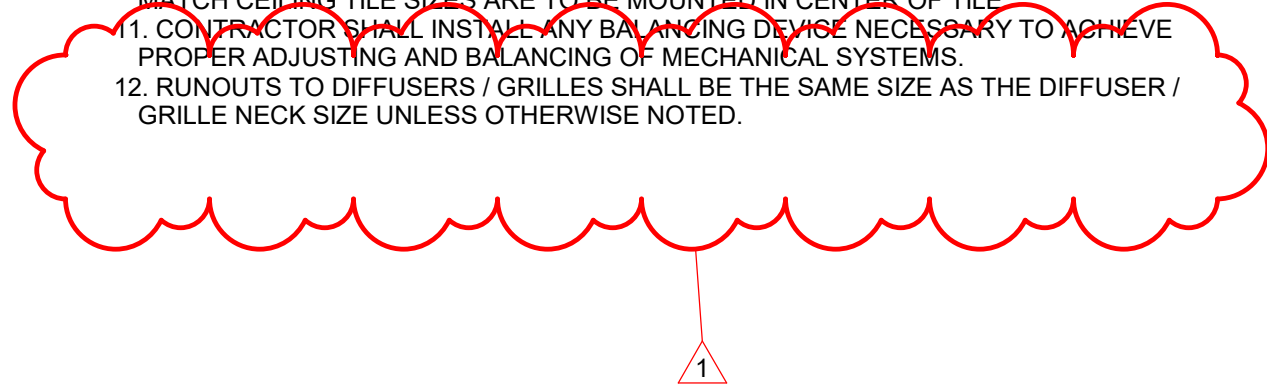


GENERAL NOTES - DEMOLITION

1. CONTRACT DOCUMENT DRAWINGS FOR MECHANICAL WORK ARE DIAGRAMMATIC AND ARE INTENDED TO CONVEY SCOPE AND GENERAL ARRANGEMENT ONLY.
2. PATCH ALL CUTTING OR DRILLING OF FINISHED WALLS, CEILINGS AND FLOORS.
3. UNLESS SPECIFICALLY NOTED, REMOVE ALL HVAC SYSTEMS IN THEIR ENTIRETY. THIS INCLUDES BUT IS NOT LIMITED TO EQUIPMENT, THERMOSTATS, TERMINAL UNITS, DUCTWORK, PIPING, AIR DEVICES, AND ALL ASSOCIATED COMPONENTS AND SUPPORTS. PATCH AND REPAIR ALL AREAS THAT ARE TO REMAIN WHERE ITEMS WERE ATTACHED OR SUPPORTED.
4. COORDINATE EXTENT OF DEMOLITION WITH NEW WORK IN ALL LOCATIONS WHERE MECHANICAL COMPONENTS ARE TO REMAIN.
5. CONTRACTOR TO REMOVE ANY MECHANICAL COMPONENTS WITHIN WALLS INDICATED TO BE DEMOLISHED ON ARCHITECTURAL DEMOLITION PLANS.
6. PROTECT ALL EQUIPMENT TO REMAIN FROM DAMAGE DURING DEMOLITION. PROVIDE TEMPORARY COVERS AND CAP ENDS OF ALL PIPING AND DUCTWORK AT COMPLETION OF PARTIAL DEMOLITION.
7. COORDINATE WITH ELECTRICAL DEMOLITION BEFORE REMOVING DUCTWORK CONTAINING SMOKE DETECTORS OR EQUIPMENT, DEVICES, AND SYSTEMS HAVING ELECTRICAL CONNECTIONS.

GENERAL NOTES - MECHANICAL

1. PROVIDE ALL MATERIALS AND EQUIPMENT AND PERFORM ALL LABOR REQUIRED TO INSTALL COMPLETE AND OPERABLE MECHANICAL SYSTEMS AS INDICATED ON THE DRAWINGS, AS SPECIFIED AND AS REQUIRED BY CODE.
2. CONTRACT DOCUMENT DRAWINGS FOR MECHANICAL WORK ARE DIAGRAMMATIC AND ARE INTENDED TO CONVEY SCOPE AND GENERAL ARRANGEMENT ONLY.
3. INSTALL ALL MECHANICAL EQUIPMENT AND APPURTENANCES IN ACCORDANCE WITH MANUFACTURERS' RECOMMENDATIONS, CONTRACT DOCUMENTS AND APPLICABLE CODES AND REGULATIONS.
4. COORDINATE ALL EQUIPMENT CONNECTIONS WITH MANUFACTURERS' CERTIFIED DRAWINGS. COORDINATE AND PROVIDE ALL DUCT AND PIPING TRANSITIONS REQUIRED FOR FINAL EQUIPMENT CONNECTIONS TO FURNISHED EQUIPMENT. FIELD VERIFY AND COORDINATE ALL DUCT AND PIPING DIMENSIONS PRIOR TO FABRICATION.
5. WORK SHALL BE ACCURATELY LAID OUT WITH REFERENCE TO THE ARCHITECTURAL DRAWINGS AND IN COOPERATION WITH OTHER TRADES, WHICH SHALL AFFORD MAXIMUM ACCESSIBILITY FOR OPERATION, MAINTENANCE AND HEADROOM. FAILURE TO COORDINATE WORK WITH OTHER TRADES SHALL NOT BE CONSIDERED AS A BASIS FOR EXTRA COST CHARGES.
6. WHERE PLENUMS ARE USED FOR SUPPLY, RETURN, EXHAUST, RELIEF OR VENTILATION SYSTEMS, MATERIALS WITHIN THE PLENUMS SHALL BE NONCOMBUSTIBLE OR SHALL BE LISTED AND LABELED AS HAVING A FLAME SPREAD INDEX OF NOT MORE THAN 25 AND A SMOKE-DEVELOPED INDEX OF NOT MORE THAN 50 WHEN TESTED IN ACCORDANCE WITH ASTM E 84 OR UL 723.
7. DIMENSIONS SHOWN ON DRAWINGS FOR DUCTWORK ARE INSIDE CLEAR.
8. ALL DUCTWORK, INCLUDING FIRE DAMPERS, SHALL BE SEALED AND TESTED FOR LEAKS PRIOR TO COVERING WORK.
9. PATCH ALL CUTTING OR DRILLING OF FINISHED WALLS, CEILINGS AND FLOORS.
10. DIFFUSER AND GRILLE LOCATIONS TO BE COORDINATED WITH ARCHITECTURAL CEILING PLAN. ANY CEILING MOUNTED DIFFUSERS OR GRILLES WHICH DO NOT MATCH CEILING TILE SIZES ARE TO BE MOUNTED IN CENTER OF TILE.
11. CONTRACTOR SHALL INSTALL ANY BALANCING DEVICE NECESSARY TO ACHIEVE PROPER ADJUSTING AND BALANCING OF MECHANICAL SYSTEMS.
12. RUNOUTS TO DIFFUSERS / GRILLES SHALL BE THE SAME SIZE AS THE DIFFUSER / GRILLE NECK SIZE UNLESS OTHERWISE NOTED.



MECHANICAL ABBREVIATIONS

AD	ACCESS DOOR
AFMS	AIR FLOW MEASURING STATION
BDD	(COUNTERBALANCED) BACKDRAFT DAMPER
BFW	BOILER FEEDWATER
CD	CONDENSATE DRAIN
CWR	CHILLED WATER RETURN
CHS	CHILLED WATER SUPPLY
CVD	(REMOTE) CABLE-CONTROLLED VOLUME DAMPER
CWR	CONDENSER WATER RETURN
CWS	CONDENSER WATER SUPPLY
DSD	DUCT SMOKE DETECTOR
FD	FIRE DAMPER
FM	FLOW METER
FOB	FLAT ON BOTTOM
FOR	FUEL OIL RETURN
FOS	FUEL OIL SUPPLY
FOT	FLAT ON TOP
GR	GLYCOL RETURN
GS	GLYCOL SUPPLY
HPS	HIGH PRESSURE STEAM / HIGH PRESSURE SUPPLY (AIR)
HRR	HEAT RECOVERY RETURN
HRS	HEAT RECOVERY SUPPLY
HWR	(HEATING) HOT WATER RETURN
HWS	(HEATING) HOT WATER SUPPLY
LPS	LOW PRESSURE STEAM / LOW PRESSURE SUPPLY (AIR)
MPS	MEDIUM PRESSURE STEAM / MEDIUM PRESSURE SUPPLY (AIR)
PCR	PUMPED CONDENSATE RETURN
PRV	PRESSURE REDUCING VALVE
RHG	REFRIGERANT HOT GAS
RL	REFRIGERANT LIQUID
RS	REFRIGERANT SUCTION
RV	RELIEF VALVE
SD	SMOKE DAMPER
TYP	TYPICAL
VO	VOLUME DAMPER
VFD	VARIABLE FREQUENCY DRIVE

APPLICABLE CODES

ALL WORK SHALL BE PERFORMED IN ACCORDANCE WITH ALL APPLICABLE CODES AND STANDARDS, INCLUDING, BUT NOT LIMITED TO:

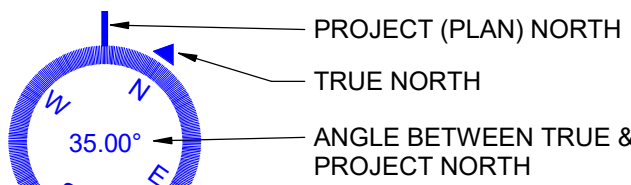
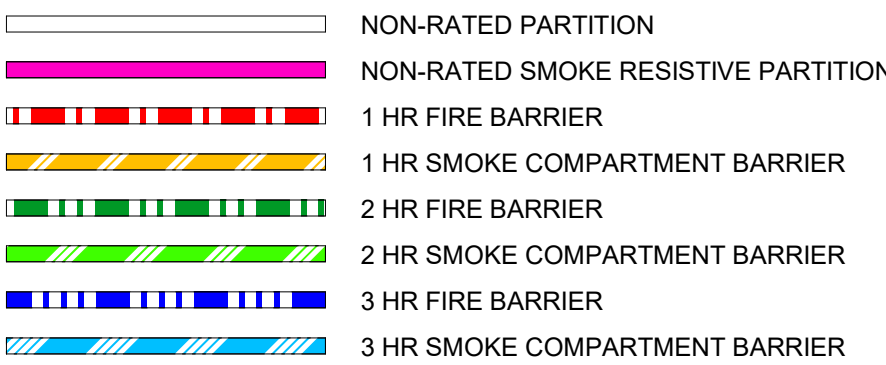
- 2021 VIRGINIA BUILDING CODE
- 2021 VIRGINIA MECHANICAL CODE
- 2021 VIRGINIA FUEL GAS CODE
- 2021 VIRGINIA ENERGY CONSERVATION CODE
- 2019 ASHRAE 90.1
- 2019 ASHRAE 62.1
- LATEST SMACNA STANDARDS

MECHANICAL SHEET LIST

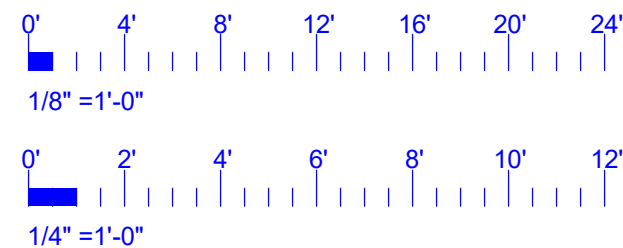
M001-I	LEGEND, ABBREVIATIONS AND GENERAL NOTES
M111-I	FIRST FLOOR PLAN- MECHANICAL

LEGEND - RATED WALLS

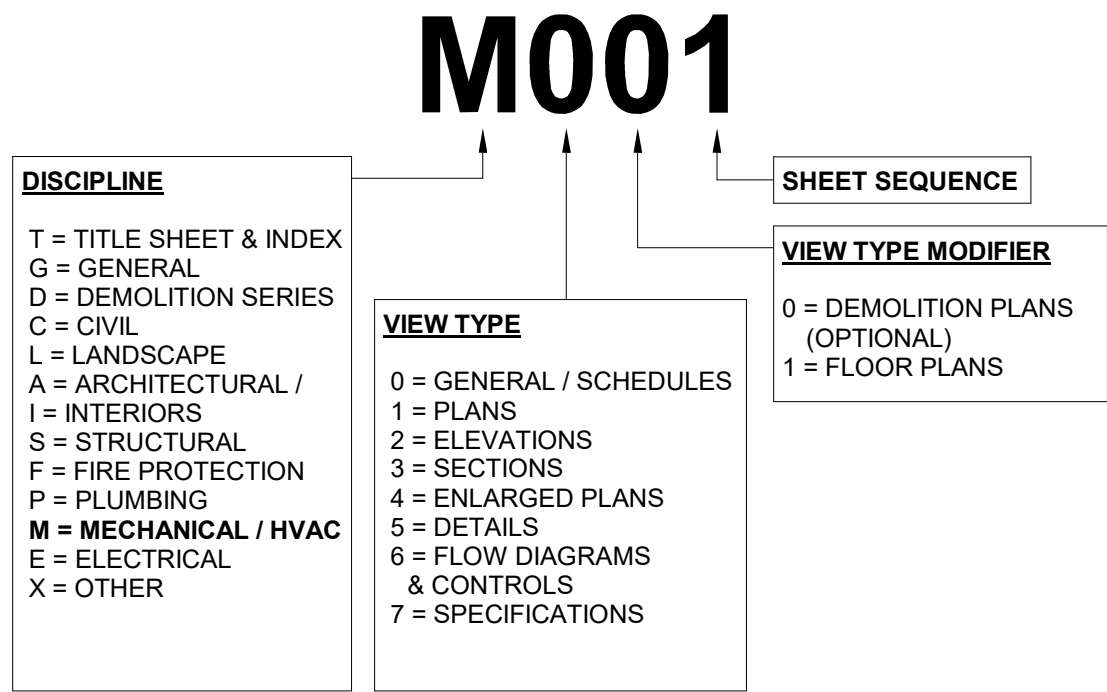
WALL & CEILING BARRIERS



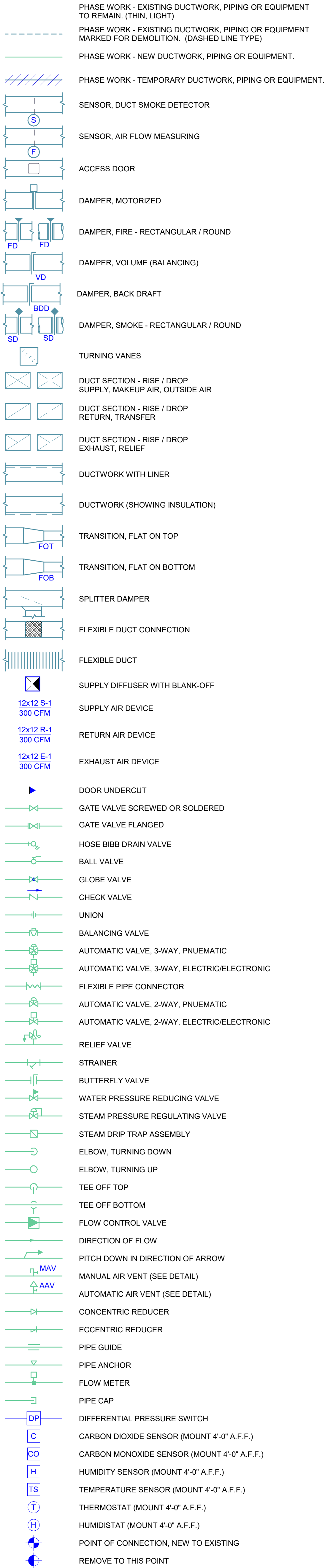
GRAPHIC SCALES



SHEET NUMBERING - STANDARD



LEGEND - MECHANICAL SYMBOLS



BASKERVILL, P.O. BOX 400, RICHMOND, VA 23218-0400



PROJECT NUMBER
2.230029.0

THE INN AT VIRGINIA TECH

901 PRICES FORK RD
BLACKSBURG, VA 24061

1 7/25/2025 Revision 1
ISSUE

**07/25/2025 -
WORKING DOCUMENTS**

LEGEND, ABBREVIATIONS
AND GENERAL NOTES
M001-I

MECHANICAL EQUIPMENT SCHEDULE - GRILLES, REGISTERS AND DIFFUSERS																												
UNIT TAG	TYPE			SERVICE TO			MOUNTING DATA			CONSTRUCTION DATA										LINEAR DEVICE DATA				SELECTION BASED ON		REMARKS		
	G	R	D	SA	RA	EA	TA	CEILING	DUCT	WALL	SHAPE	MATERIAL	COLOR	ACCESSORIES		PATTERN					# SLOTS	SLOT SIZE	ACTIVE LENGTH	CONTINUOUS	MANUFACTURER		MODEL	
														VOLUME DAMPER	REMOTE CABLE OPERATOR	1-W	2-W	3-W	4-W	E/R								
S-1			X	X				X			LINEAR	ALUMINUM	PER ARCH.		X	X						2	1"	48"	X	METALAIR	6600/ UPI	ALL
S-2			X	X				X			LINEAR	ALUMINUM	PER ARCH.		X	X					1	1"	36"		METALAIR	6600/ UPI	ALL	
S-3			X	X				X			SQUARE, 6" NECK	STEEL	PER ARCH.						X						METALAIR	5750	ALL	

SPECIFICATION SECTIONS:
23713 - DIFFUSERS, REGISTERS, AND GRILLES

REMARKS:
1. FINAL COLOR SELECTION BY ARCHITECT. VENDOR TO SUBMIT FULL COLOR CHART.
2. BASIS OF DESIGN FOR REMOTE CABLE OPERATOR: YOUNG REGULATOR.

INSULATION SCHEDULE				
APPLICATION	LOCATION	THICKNESS (IN.)	INSULATION TYPE	REMARKS
SUPPLY AIR SYSTEMS (ALL)				
VAV TERMINAL TO SUPPLY GRILLE	ALL	2"	1 LB/CF. DENSITY BLANKET	--

SPECIFICATION SECTIONS:
230713 - DUCT INSULATION

GENERAL NOTES - DEMOLITION

1. CONTRACT DOCUMENT DRAWINGS FOR MECHANICAL WORK ARE DIAGRAMMATIC AND ARE INTENDED TO CONVEY SCOPE AND GENERAL ARRANGEMENT ONLY.
2. PATCH ALL CUTTING OR DRILLING OF FINISHED WALLS, CEILINGS AND FLOORS.
3. UNLESS SPECIFICALLY NOTED, REMOVE ALL HVAC SYSTEMS IN THEIR ENTIRETY. THIS INCLUDES BUT IS NOT LIMITED TO EQUIPMENT, THERMOSTATS, TERMINAL UNITS, DUCTWORK, PIPING, AIR DEVICES, AND ALL ASSOCIATED COMPONENTS AND SUPPORTS. PATCH AND REPAIR ALL AREAS THAT ARE TO REMAIN WHERE ITEMS WERE ATTACHED OR SUPPORTED.
4. COORDINATE EXTENT OF DEMOLITION WITH NEW WORK IN ALL LOCATIONS WHERE MECHANICAL COMPONENTS ARE TO REMAIN.
5. CONTRACTOR TO REMOVE ANY MECHANICAL COMPONENTS WITHIN WALLS INDICATED TO BE DEMOLISHED ON ARCHITECTURAL DEMOLITION PLANS.
6. PROTECT ALL EQUIPMENT TO REMAIN FROM DAMAGE DURING DEMOLITION. PROVIDE TEMPORARY COVERS AND CAP ENDS OF ALL PIPING AND DUCTWORK AT COMPLETION OF PARTIAL DEMOLITION.
7. COORDINATE WITH ELECTRICAL DEMOLITION BEFORE REMOVING DUCTWORK CONTAINING SMOKE DETECTORS OR EQUIPMENT, DEVICES, AND SYSTEMS HAVING ELECTRICAL CONNECTIONS.
8. DIFFUSERS TAGGED S(E) ARE TO BE REMOVED, CLEANED AND STORED FOR REUSE. REFER TO NEW WORK DRAWING FOR NEW LOCATIONS.
9. EXISTING MECHANICAL INFORMATION OBTAINED FROM JANUARY 20 2003 RECORD DRAWINGS BY SFCS. CONTRACTOR TO VERIFY EXISTING CONDITIONS IN FIELD.

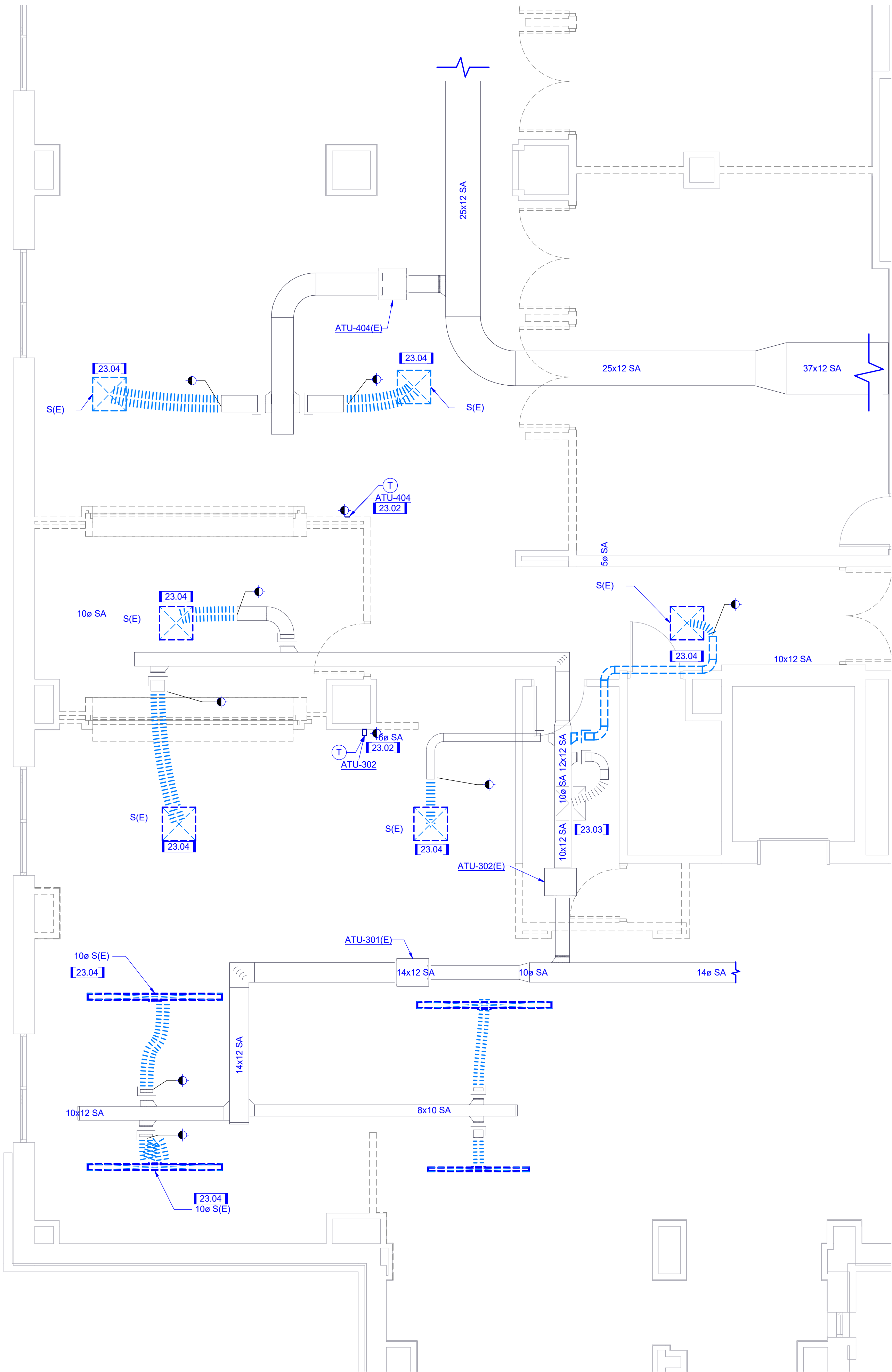
KEY NOTE LEGEND

- 23.01 PROVIDE ACCESS PANEL TO MAINTAIN ABOVE CEILING ACCESS TO ATU-302
- 23.02 THERMOSTAT IS TO BE REMOVED, CLEANED AND STORED FOR REUSE, REFER TO NEW WORK DRAWING FOR NEW LOCATIONS.
- 23.03 THE CEILING IN THIS AREA IS NOT CHANGING AND THE DIFFUSER IS EXISTING TO REMAIN.
- 23.04 DIFFUSER IS TO BE REMOVED, CLEANED AND STORED FOR REUSE, REFER TO NEW WORK DRAWING FOR NEW LOCATIONS. IF DIFFUSER IS NOT TO BE RESUSED, REMOVE AND RETURN TO OWNER.

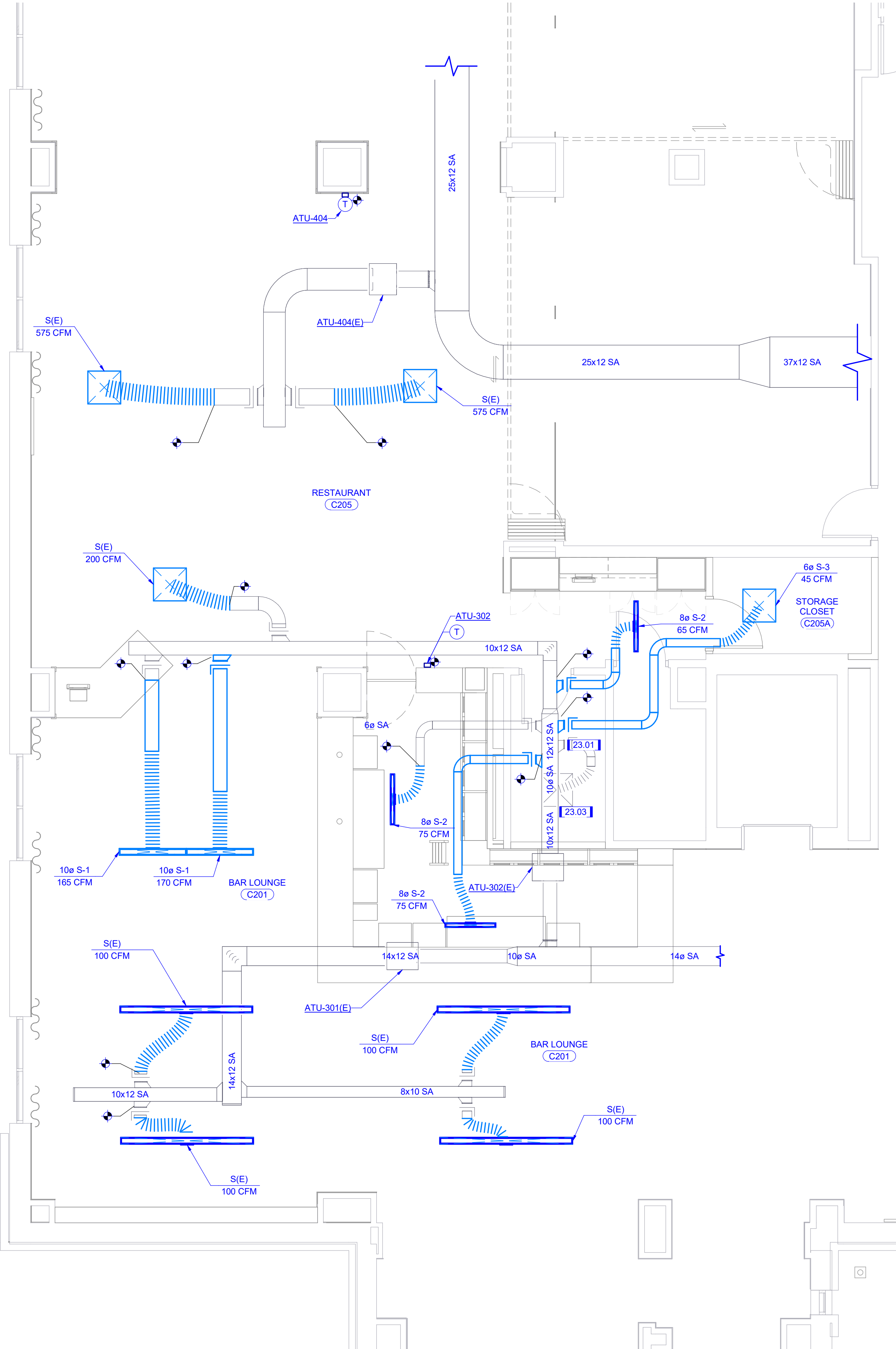


THE INN AT VIRGINIA TECH
AND SKELTON CONFERENCE CENTER

Baskervill



6A FIRST FLOOR DEMOLITION PLAN
SCALE: 1/4" = 1'-0"



3A FIRST FLOOR NEW WORK PLAN
SCALE: 1/4" = 1'-0"

BASKERVILL, P.O. BOX 400, RICHMOND, VA 23218-0400



PROJECT NUMBER
2.230029.0

THE INN AT VIRGINIA
TECH

901 PRICES FORK RD
BLACKSBURG, VA 24061

1 7/25/2025 Revision 1
ISSUE
07/25/2025 -
WORKING DOCUMENTS

FIRST FLOOR PLAN-
MECHANICAL
M111-I