



VIRGINIA POLYTECHNIC INSTITUTE AND STATE UNIVERSITY
PROCUREMENT DEPARTMENT

ADDENDUM NO. 3

DATE: April 8, 2026
TO: All Offerors
FROM: Kim Widrig, Contracting Officer
TOTAL PAGE(S): 1 page (not including attachments)
SOLICITATION TITLE: McBryde Hall Toilets Floors 1-3
SOLICITATION NUMBER: 049302620

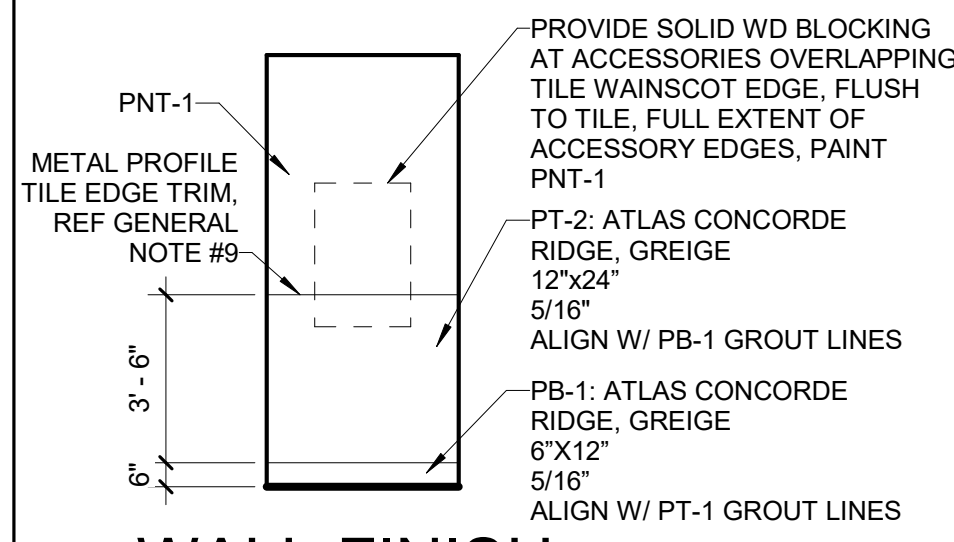
I. CLARIFICATIONS AND ADDITIONAL INFORMATION

1. The sketch referenced in the response to RFI #1 in Addendum #2 was inadvertently omitted. Please see the attached sketch, provided as **Exhibit A**.

II. REQUESTS FOR INFORMATION

None

Exhibit A
Sketch

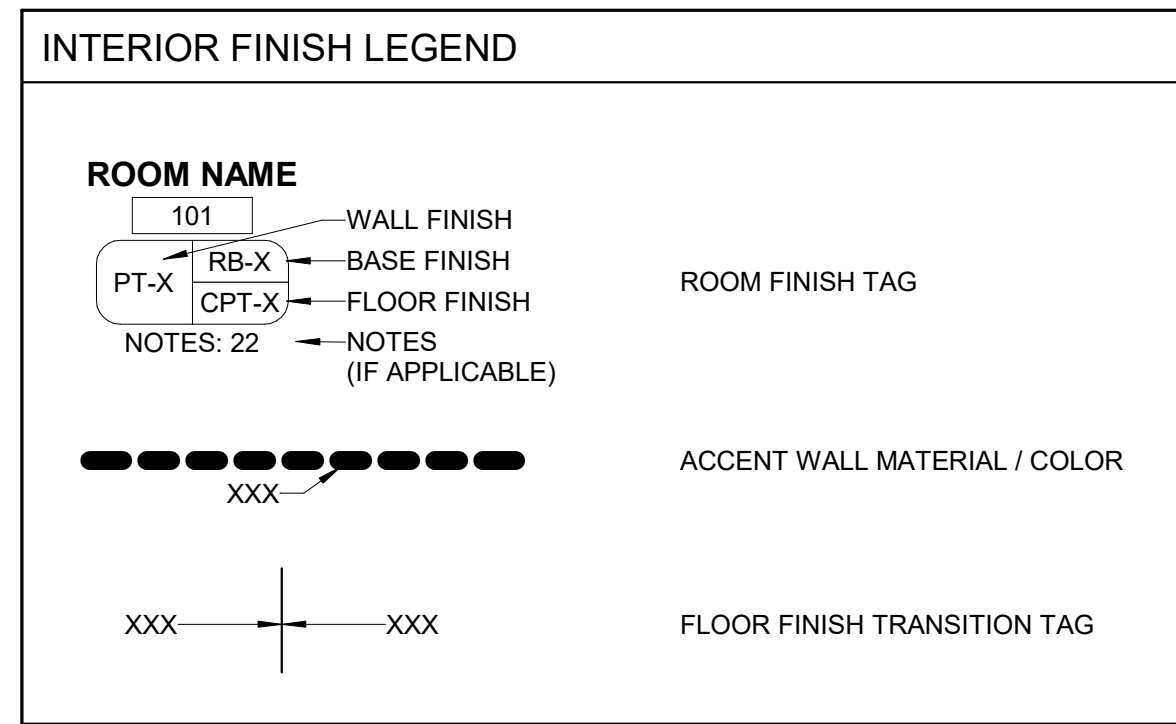


7 WALL FINISH PATTERN TYP.

Scale: 1/4" = 1'-0"

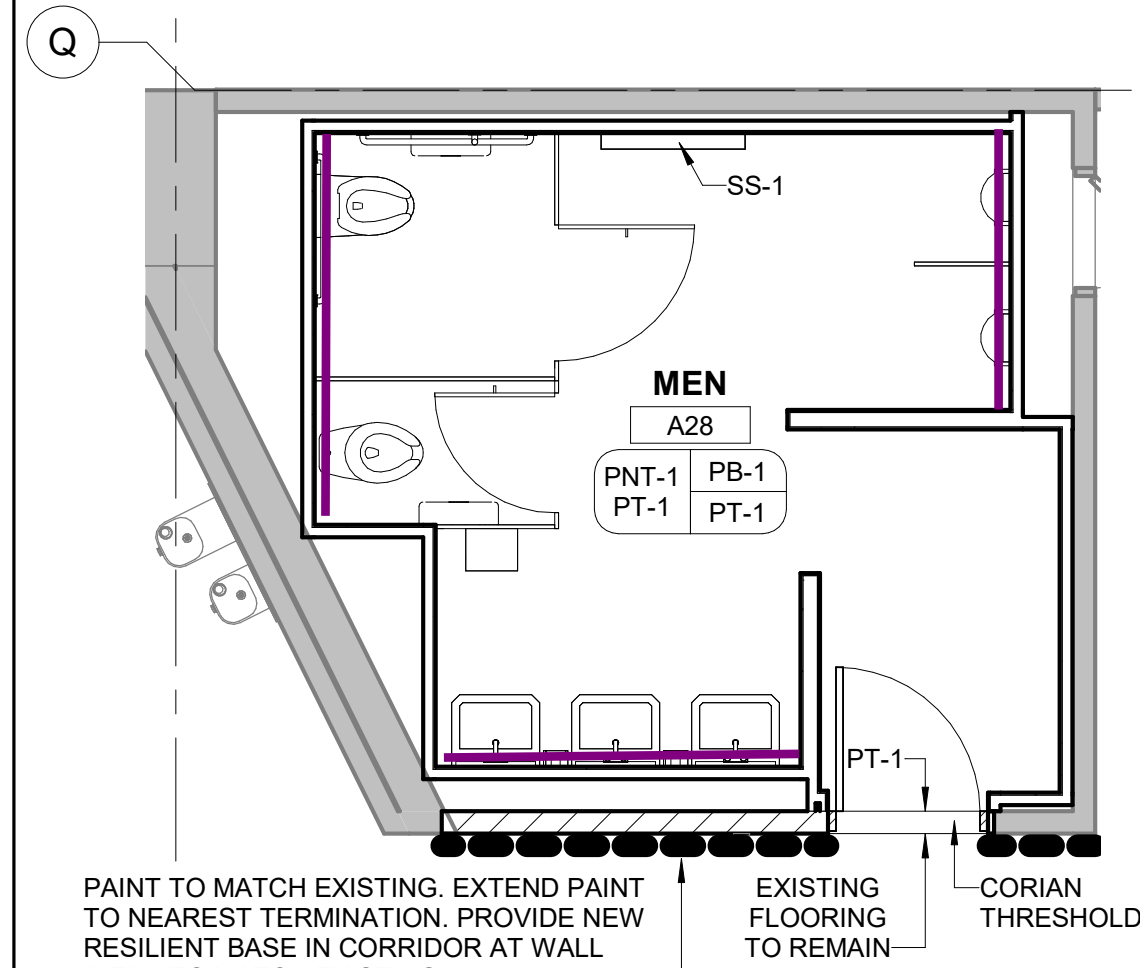
FINISH LIST	
FINISH	COMMENTS
ACOUSTIC CEILING TILE (APC)	
APC-1	TBD
EPOXY PAINT (EP)	
EP-1	TBD
PAINT (PNT)	
PNT-1	SHERWIN WILLIAMS VT OFF WHITE, EGG SHELL
PNT-2	TBD
PORCELAIN BASE	
PB-1	ATLAS CONCORDE, RIDGE, GREIGE, 6"x12" COVE BASE

FINISH LIST	
FINISH	COMMENTS
PORCELAIN TILE	
PT-1	ATLAS CONCORDE, RIDGE, GREIGE, 2"x2", 5/16" FLOOR TILE
PT-2	ATLAS CONCORDE, RIDGE, GREIGE, 12"x24", 5/16" WALL TILE
RESILIENT BASE (RB)	
RB-1	TBD
SOLID SURFACE (SS)	
SS-1	TBD
VINYL COMPOSITION TILE (VCT)	
VCT-1	TBD

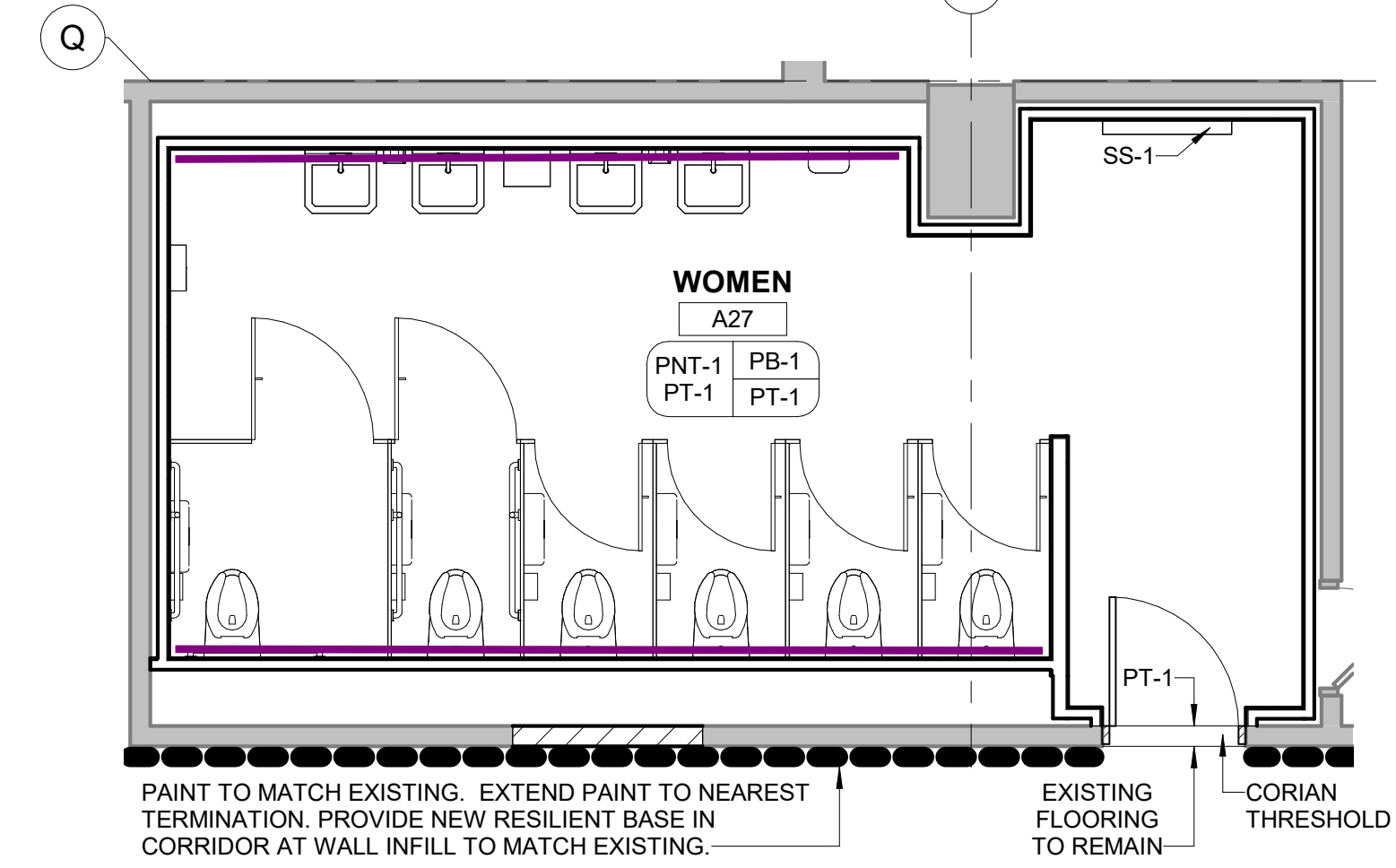


- FINISH PLAN GENERAL NOTES**
1. FINISH INDICATES ENTIRE SURFACE, U.N.O.
 2. FINISH ON SOFFITS INDICATES ENTIRE FACE AND BOTTOM, U.N.O.
 3. CEILINGS TO BE APC-1, U.N.O.
 4. SOFFITS TO BE GYP BD, U.N.O.
 5. REFER TO DETAIL 7/A-201 FOR TRANSITION DETAILS BETWEEN DISSIMILAR MATERIALS, CORNER GUARD DETAILS, AND WALL BASE DETAILS.
 6. HOLLOW METAL FRAME TO BE PAINTED, MATCH EXISTING.
 7. GYP BD CEILINGS TO BE PAINTED PNT-1 OR AS SELECTED BY OWNER.
 8. SCORE TILES AROUND DRAIN AREAS FOR SLOPE.
 9. PROVIDE METAL PROFILE CORNER TRIM AT ALL TILED OUTSIDE CORNERS, AND AT EXPOSED TILE EDGES. BASIS OF DESIGN: SCHLUTER SYSTEMS, BRUSHED STAINLESS STEEL QUADEC Q125EB. INSTALL PER MANUFACTURER'S SPECIFIC INSTALLATION INSTRUCTIONS. CONTRACTOR TO PROVIDE SCHLUTER STRIP SUBMITTAL INCLUDING PHYSICAL SAMPLE FOR ARCHITECT APPROVAL.
 10. PORCELAIN TILE RESTROOM SIDE ONLY, U.N.O.

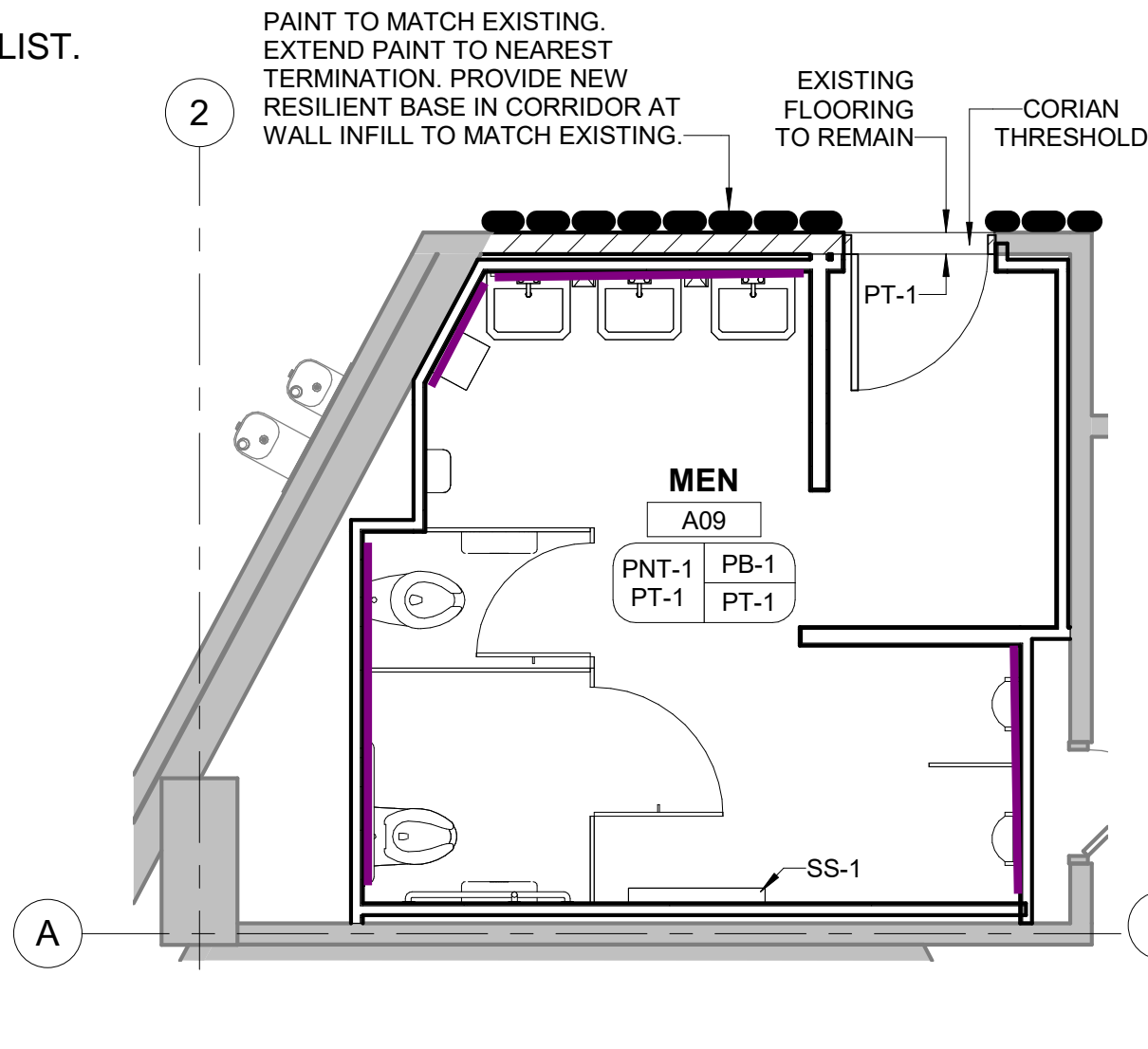
2
WALLS RECEIVING NEW TILE. TILE TO MATCH THE TILE NOTED ON THE 2ND AND 3RD FLOOR FINISH LIST.



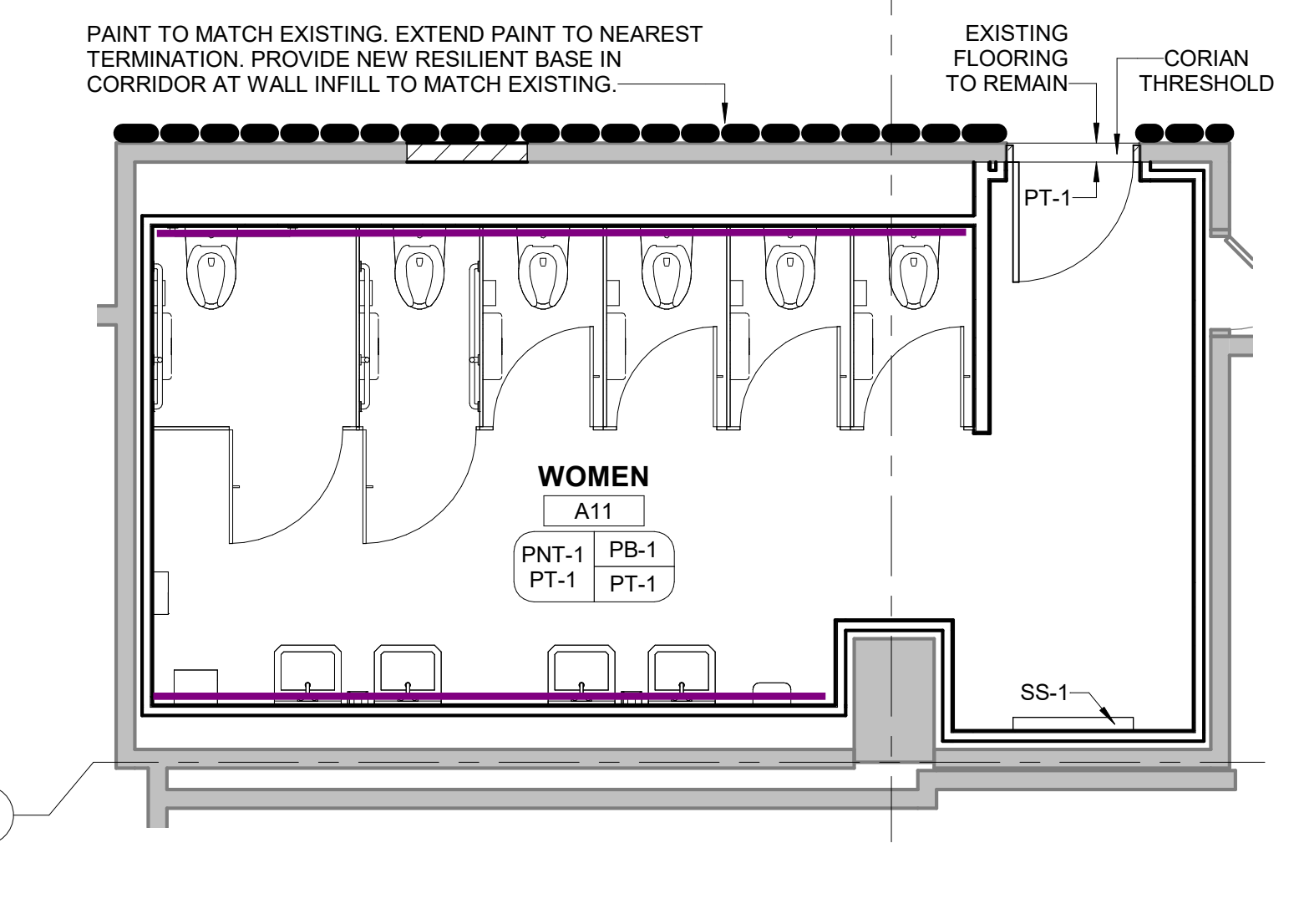
8 A28 ENLARGED FINISH PLAN
Scale: 1/4" = 1'-0"



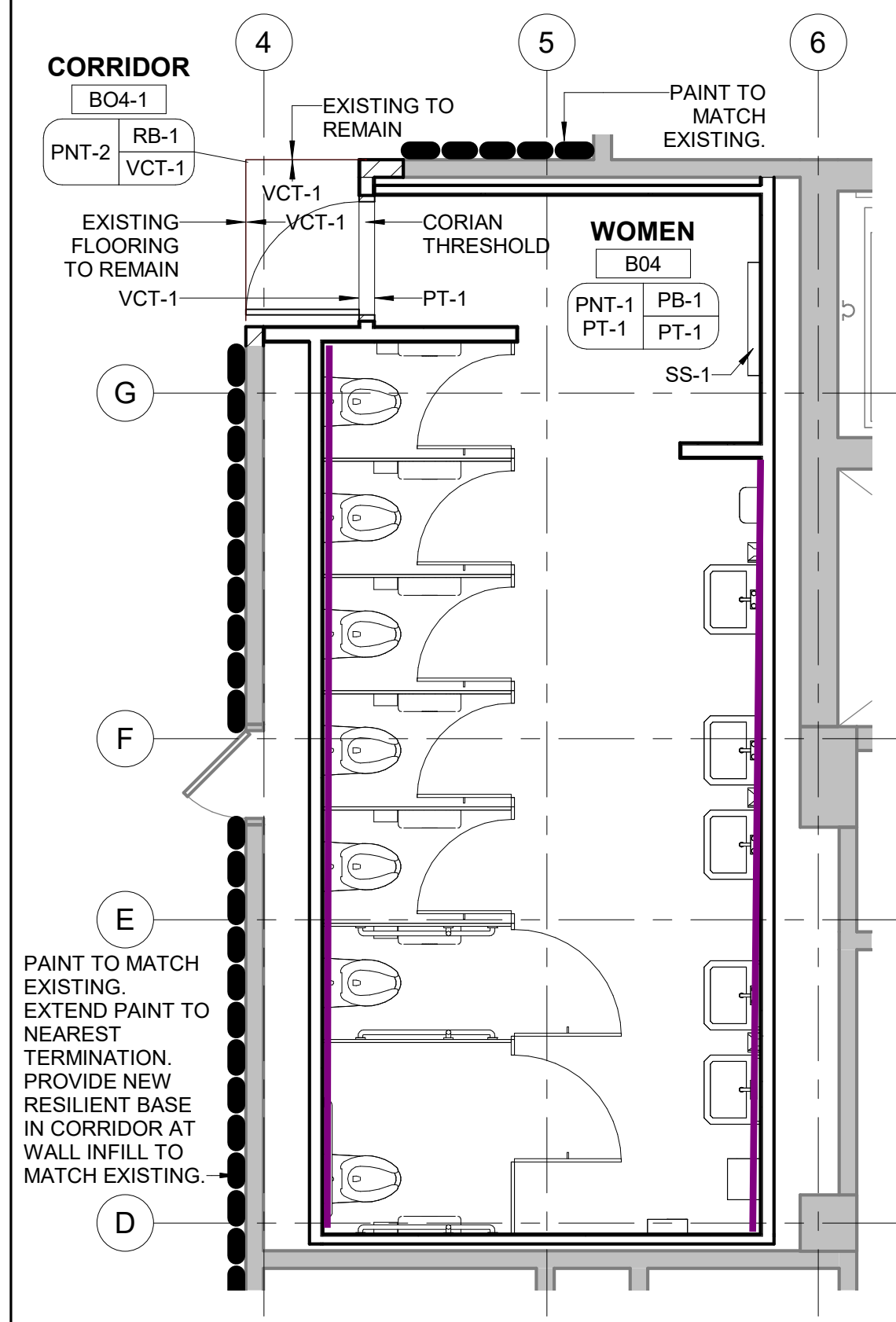
5 A27 ENLARGED FINISH PLAN
Scale: 1/4" = 1'-0"



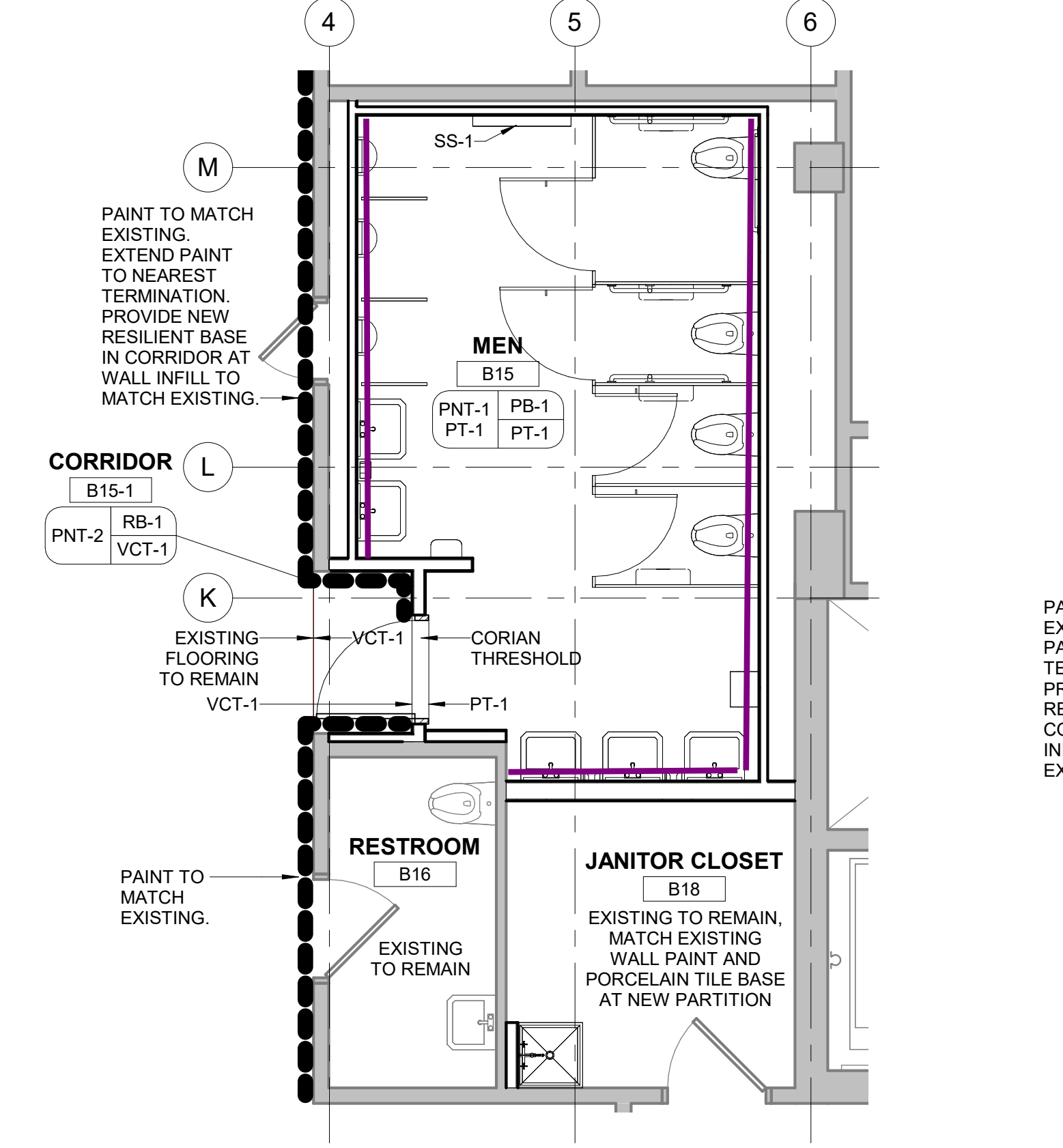
3 A09 ENLARGED FINISH PLAN
Scale: 1/4" = 1'-0"



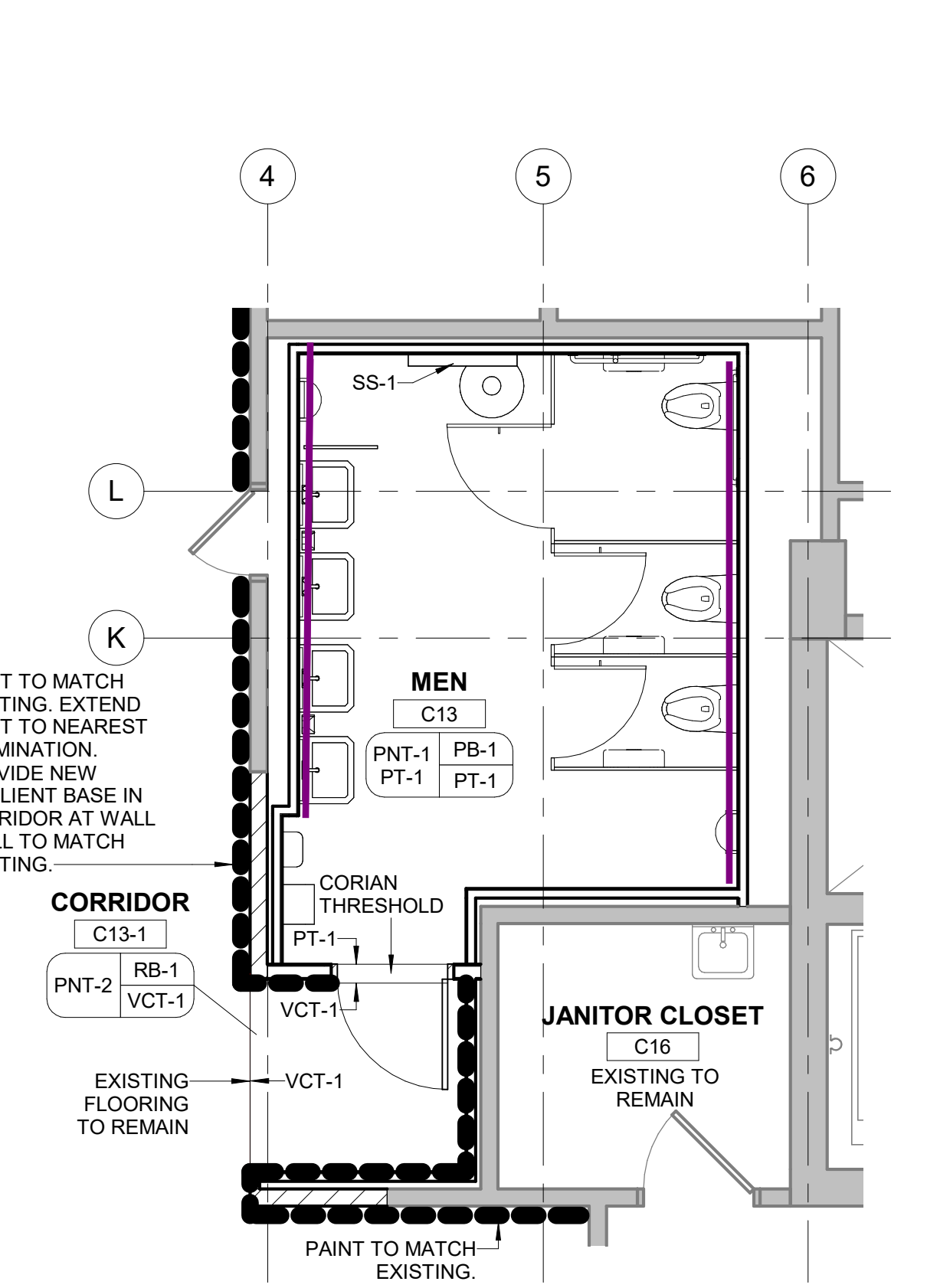
1 A11 ENLARGED FINISH PLAN
Scale: 1/4" = 1'-0"



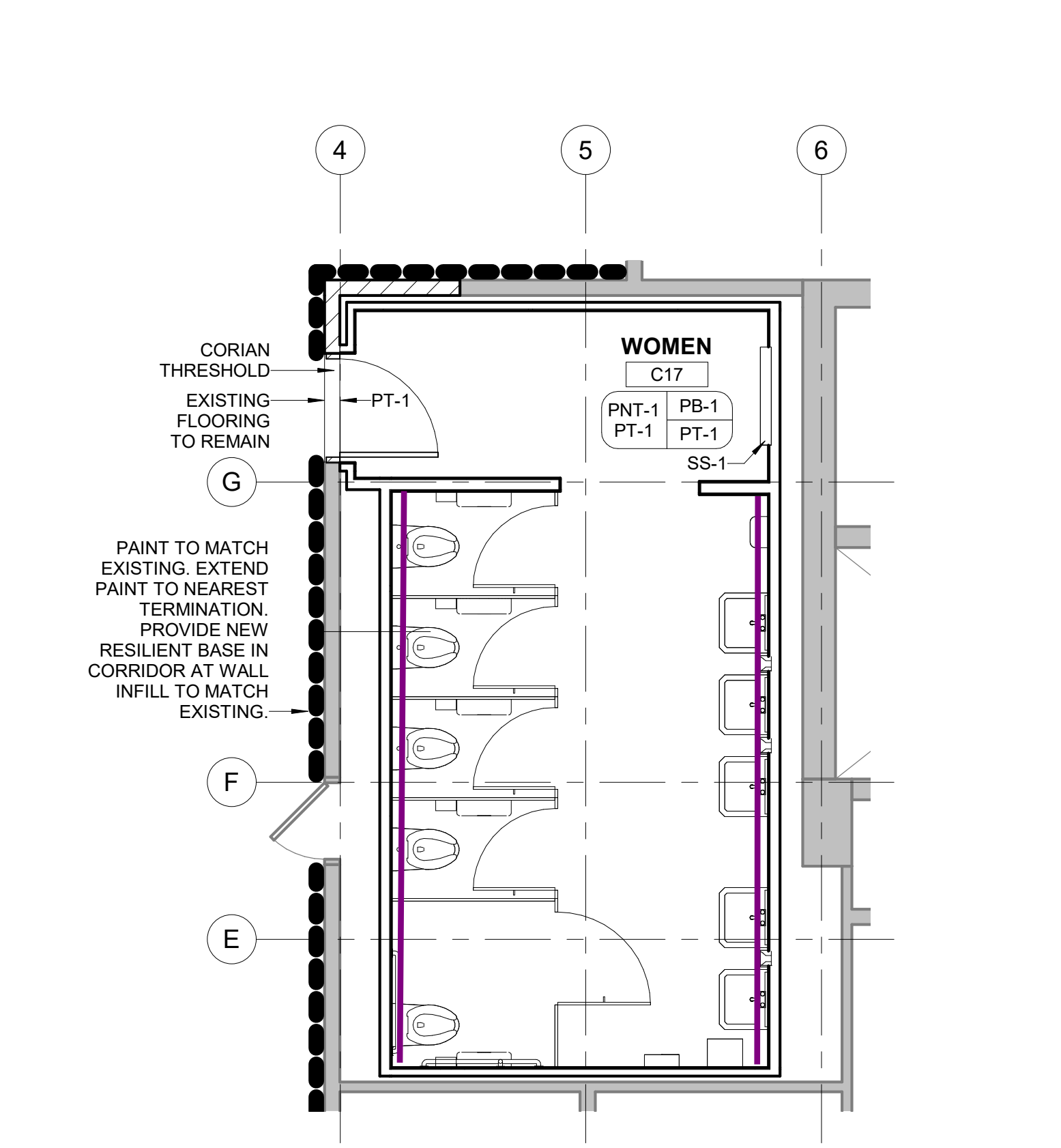
9 B04 ENLARGED FINISH PLAN
Scale: 1/4" = 1'-0"



6 B15 ENLARGED FINISH PLAN
Scale: 1/4" = 1'-0"



4 C13 ENLARGED FINISH PLAN
Scale: 1/4" = 1'-0"



2 C17 ENLARGED FINISH PLAN
Scale: 1/4" = 1'-0"

AGENCY APPROVAL

design | community | environment

SUITE 200 200 N. MAIN STREET
BLACKSBURG, VA 24060
P. 540.953.2724
F. 540.953.2725

DEWBERRY ENGINEERS, INC.
9300 HARRIS CORNERS PKWY, SUITE 220 P. 704.509.9918
CHARLOTTE, NC 28269 F. 704.509.9937

CONSULTANT

REVISIONS	DATE
1 UBO COMMENTS	04/26/24
2 REDESIGN PER VT	12/19/2025
DIRECTION	

0' 2' 4' 8'

SCALE: 1/4" = 1'-0"

FIRST FLOOR ENLARGED FINISH AND SIGNAGE PLANS

Virginia Tech

McBryde Hall Restroom Renovations

DATE	03/08/2024
SCALE	As indicated
DRAWN	JGSIII
JOB	2325
IFB #	XXX
PROJECT CODE	23-568216
SHEET	