



f
VIRGINIA POLYTECHNIC INSTITUTE AND STATE UNIVERSITY
PROCUREMENT DEPARTMENT

ADDENDUM NO. 6

DATE: June 10, 2026
TO: All Offerors
FROM: Kim Widrig, Contracting Officer
TOTAL PAGE(S): 6 pages (not including attachments)
SOLICITATION TITLE: Improve Center Woods Complex
SOLICITATION NUMBER: 049302624

I. CLARIFICATIONS AND ADDITIONAL INFORMATION

1. **Drawing Updates:**

Modified sheets included in addendum: A601 (Attached as **Exhibit A**)

II. REQUESTS FOR INFORMATION

1. I have found 11 contradictions in the door schedule that will affect how the interior and exterior doors will be priced. I know it is past the RFI deadline, but I want to bring this to your attention for a couple of reasons. First, if the contradictions are not resolved, the bid pricing for the door scope will most likely not be comparable between GCs; pricing will depend on how each GC resolves the contradictions. Secondly, not fixing the Door Schedule at this stage will most likely result in change orders during the project execution.

Virginia Tech Response: See updated sheet A01 in **Exhibit A**.

2. Can AISC Certification requirement be removed, as long as AISC requirements are met? This certification limits competition and results in higher costs to the Owner.

Virginia Tech Response: Yes, the AISC Certification requirement can be removed.

3. Part A of the bid form mentions caissons. Are caissons a part of this project scope?

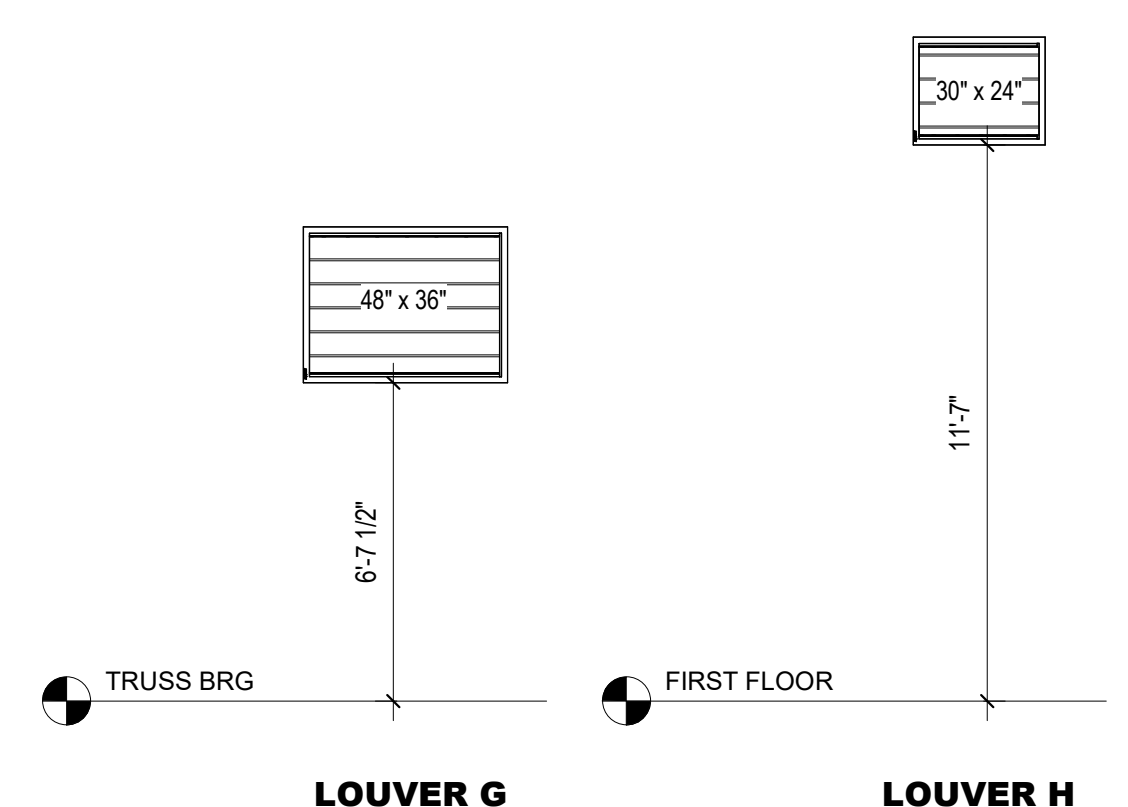
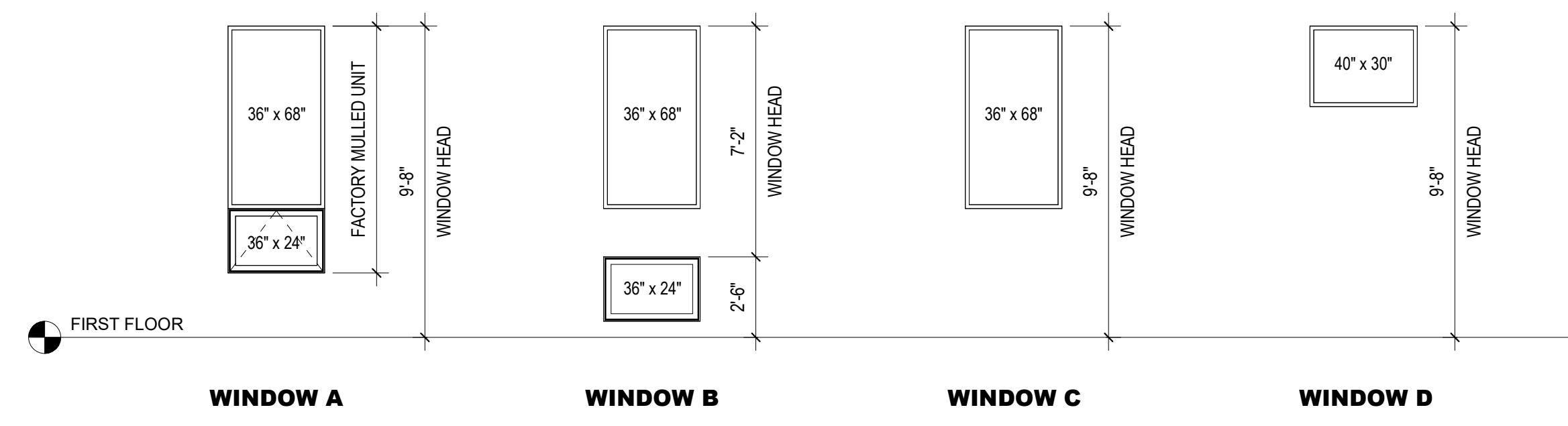
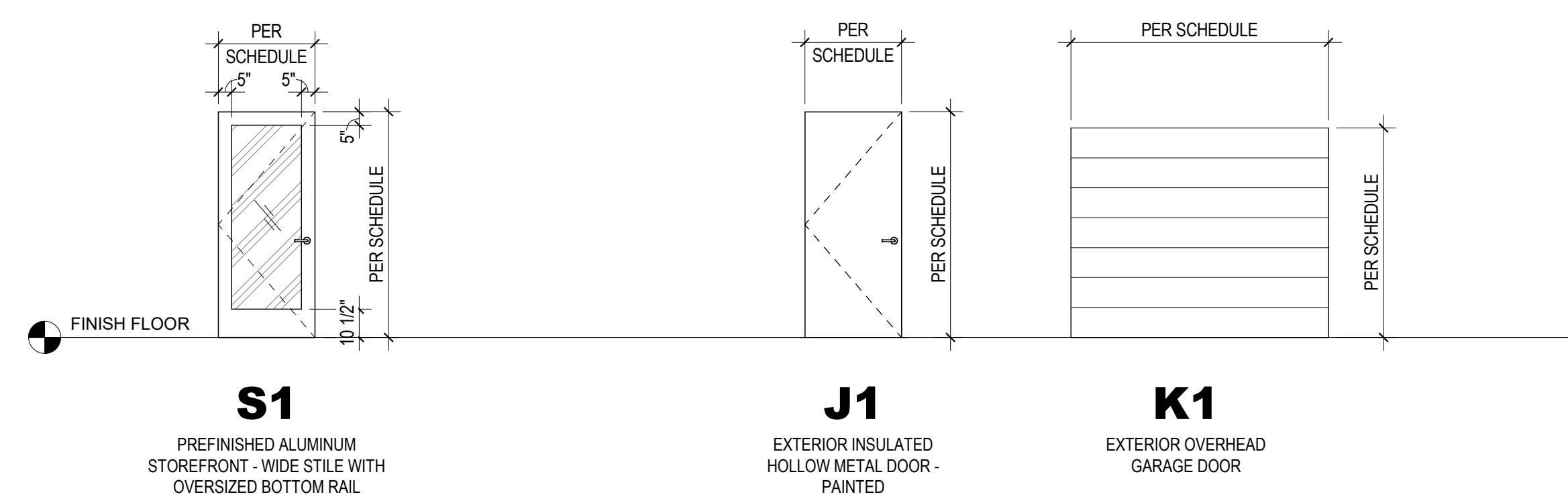
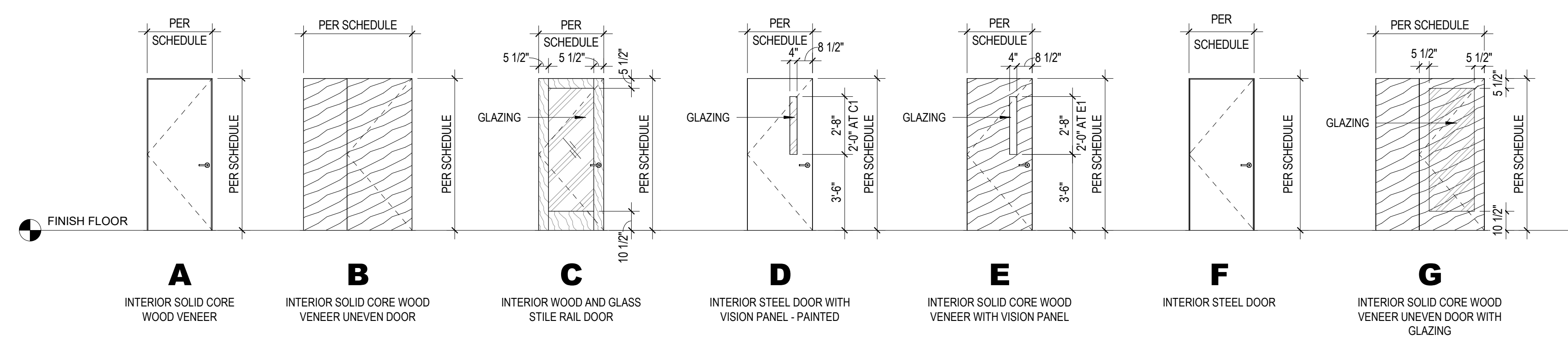
Virginia Tech Response: There are not caissons on this project, and that language on the bid form can be ignored.

EXHIBIT A
Revised Sheet A601

DOOR SCHEDULE - EXTERIOR													
DOOR MARK	TYPE	WIDTH	HEIGHT	DOOR		FRAME		HARDWARE		CARD ACCESS	AUTOMATIC DOOR OPERATOR	COMMENTS	
				MATERIAL	FINISH	MATERIAL	FINISH	HARDWARE SET					
X100	J1	3'-0"	7'-0"	HM	PAINT	HM	PAINT	3.0		NO, DPS ONLY			
X110	J1	3'-0"	7'-0"	HM	PAINT	HM	PAINT	3.0		NO, DPS ONLY			
X112A	J1	3'-0"	7'-0"	HM	PAINT	HM	PAINT	3.0		NO, DPS ONLY			
X112B	K1	12'-0"	8'-0"	STEEL	FACTORY	N/A	N/A	23.0		NO, DPS ONLY			
X120A	K1	16'-0"	15'-0"	STEEL	FACTORY	N/A	N/A	23.0		NO, DPS ONLY			
X120B	J1	3'-0"	7'-0"	HM	PAINT	HM	PAINT	3.0		NO, DPS ONLY			
X120C	K1	16'-0"	15'-0"	STEEL	FACTORY	N/A	N/A	23.0		NO, DPS ONLY			
X120D	J1	3'-0"	7'-0"	HM	PAINT	HM	PAINT	3.0		NO, DPS ONLY			
X121	J1	3'-0"	7'-0"	HM	PAINT	HM	PAINT	4.0		NO, DPS ONLY			
X123	J1	3'-0"	7'-0"	HM	PAINT	HM	PAINT	4.0		NO, DPS ONLY			
X125	J1	3'-0"	7'-0"	HM	PAINT	HM	PAINT	4.0		NO, DPS ONLY			
X127	J1	3'-0"	7'-0"	HM	PAINT	HM	PAINT	4.0		NO, DPS ONLY			
X130A	J1	3'-0"	7'-0"	HM	PAINT	HM	PAINT	3.0		NO, DPS ONLY			
X130B	K1	14'-0"	9'-8"	STEEL	FACTORY	N/A	N/A	23.0		NO, DPS ONLY			
X135	J1	3'-0"	7'-0"	HM	PAINT	HM	PAINT	3.0		NO, DPS ONLY			
XA100	SS1	6'-0"	7'-0"	ALUMINUM	FACTORY	SF	FACTORY	1.0	YES		YES	1	
XA111	S1	3'-0"	7'-0"	ALUMINUM	PAINT	HM	PAINT	2.0		NO, DPS ONLY			
XA120	J1	6'-0"	7'-0"	HM	PAINT	HM	PAINT	5.0		NO, DPS ONLY			
XA140	J1	3'-0"	7'-0"	HM	PAINT	HM	PAINT	3.0		NO, DPS ONLY			

DOOR SCHEDULE - INTERIOR														
Mark	TYPE	HEIGHT	WIDTH	LEAF SIZE	DOOR		FRAME		FIRE RATING		HARDWARE		COMMENTS	
					MATERIAL	FINISH	GLAZING	MATERIAL	FINISH	GLAZING	DOOR	FRAME		HARDWARE SET
100A	A	7'-0"	3'-0"		SCWD	STAIN		HM	PAINT				14.0	
100B	A	7'-0"	3'-0"		SCWD	PAINT		HM	PAINT				13.0	
103	C	7'-0"	3'-0"		SCWD	STAIN		FULL LITE TEMPERED	SF	FACTORY	YES		20.0	
105A	C	7'-0"	3'-0"		SCWD	STAIN		FULL LITE TEMPERED	HM	PAINT			20.0	
105B	C	7'-0"	3'-0"		SCWD	STAIN		FULL LITE TEMPERED	HM	PAINT			20.0	
110C	A	7'-0"	3'-0"		SCWD	STAIN		HM	PAINT				17.0	
110D	A	7'-0"	3'-0"		SCWD	STAIN		HM	PAINT				17.0	
110E	A	7'-0"	3'-0"		SCWD	STAIN		HM	PAINT				17.0	
110F	A	7'-0"	3'-0"		SCWD	STAIN		HM	PAINT				17.0	
110G	A	7'-0"	3'-0"		SCWD	STAIN		HM	PAINT				17.0	
110H	A	7'-0"	3'-0"		SCWD	STAIN		HM	PAINT				17.0	
112	A	7'-0"	3'-0"		SCWD	STAIN		HM	PAINT				15.0	
115A	A	7'-0"	3'-0"		SCWD	STAIN		HM	PAINT				15.0	
115B	B	7'-0"	3'-0"	3'-0" / 2'-0"	SCWD	STAIN		HM	PAINT				10.0	
115C	C	7'-0"	3'-0"		SCWD	STAIN		FULL LITE TEMPERED	SF	PAINT	YES		18.0	
115D	G	7'-0"	5'-0"	3'-0" / 2'-0"	SCWD	STAIN		FULL LITE TEMPERED	SF	PAINT	YES		9.0	
115E	A	7'-0"	3'-0"		SCWD	STAIN		HM	PAINT				16.0	
117	C	7'-0"	3'-0"		SCWD	STAIN		FULL LITE TEMPERED	HM	PAINT	YES		20.0	
119	AA	7'-0"	6'-0"	(2) 3'-0"	SCWD	STAIN		HM	PAINT				12.0	
120A	A	7'-0"	3'-0"		SCWD	STAIN		HM	PAINT				22.0	
120B	DD	7'-0"	6'-0"	(2) 3'-0"	HM	PAINT		VISION PANEL	HM	PAINT			8.0	
120C	DD	7'-0"	6'-0"	(2) 3'-0"	HM	PAINT		VISION PANEL	HM	PAINT			8.0	
121	B	7'-0"	5'-0"	3'-0" / 2'-0"	SCWD	STAIN		HM	PAINT				9.0	
123	B	7'-0"	5'-0"	3'-0" / 2'-0"	SCWD	STAIN		HM	PAINT				9.0	
125	B	7'-0"	5'-0"	3'-0" / 2'-0"	SCWD	STAIN		HM	PAINT				9.0	
127	B	7'-0"	5'-0"	3'-0" / 2'-0"	SCWD	STAIN		HM	PAINT				9.0	
130	A	7'-0"	3'-0"		SCWD	STAIN		HM	PAINT				19.0	
130A	B	7'-0"	5'-0"	3'-0" / 2'-0"	SCWD	STAIN		HM	PAINT				9.0	
135A	A	7'-0"	3'-0"		SCWD	STAIN		HM	PAINT				19.0	
135B	B	7'-0"	5'-0"	3'-0" / 2'-0"	SCWD	STAIN		HM	PAINT				9.0	
135C	B	7'-0"	5'-0"	3'-0" / 2'-0"	SCWD	STAIN		HM	PAINT				9.0	
145-13	F	7'-0"	3'-0"		HM	PAINT		HM	PAINT				20.0	
145A	EE	7'-0"	6'-0"	(2) 3'-0"	SCWD	STAIN		HM	PAINT				11.0	
145B	A	7'-0"	3'-0"		SCWD	STAIN		HM	PAINT				18.0	
200	FF	7'-0"	6'-0"	(2) 3'-0"	HM	PAINT		HM	PAINT				5.0	
A100	CC	7'-0"	6'-0"	(2) 3'-0"	SCWD	STAIN		FULL LITE TEMPERED	SF	FACTORY	YES		7.1	1
A101A	C	7'-0"	3'-0"		SCWD	STAIN		FULL LITE TEMPERED	SF	FACTORY	YES		8.0	YES
A101B	C	7'-0"	3'-0"		SCWD	STAIN		FULL LITE TEMPERED	SF	FACTORY	YES		6.0	YES
A101C	CC	7'-0"	6'-0"	(2) 3'-0"	SCWD	STAIN		FULL LITE TEMPERED	SF	FACTORY	YES		7.0	
A102	A	7'-0"	3'-0"		SCWD	STAIN		HM	PAINT				21.0	
A103	A	7'-0"	3'-0"		SCWD	STAIN		HM	PAINT				21.0	
A104	A	7'-0"	3'-0"		SCWD	PAINT		HM	PAINT				14.0	
A105	A	7'-0"	3'-0"		SCWD	STAIN		HM	PAINT				22.0	
A106	A	7'-0"	3'-0"		SCWD	STAIN		HM	PAINT				18.0	
A107	A	7'-0"	3'-0"		SCWD	STAIN		HM	PAINT				18.0	
A110	A	7'-0"	3'-0"		SCWD	PAINT		HM	PAINT				15.0	

INTERIOR DOOR NOTES:
 1. PROVIDE AUTOMATIC LOW-ENERGY OPERATOR FOR ACTIVE LEAVES. INTERLOCK WITH EXTERIOR DOOR AND PROVIDE PUSH BUTTONS AT BUILDING EXTERIOR, INSIDE VESTIBULE, AND AT BUILDING INTERIOR IN ORDER TO ALLOW ACTIVATION FROM ANY SIDE OF DOORS A100 AND XA100.



DOOR TYPES LEGEND:
 INDICATES DOOR TYPE
A1 - INDICATES DOOR RATING REQUIREMENT:
 1 INDICATES 60 MINUTE DOOR
 2 INDICATES 90 MINUTE DOOR
 INDICATES DOOR TYPE
AA - INDICATES PAIRED EQUAL PANEL DOORS
 INDICATES DOOR TYPE
AA1 - INDICATES RATED PAIRED EQUAL PANEL DOORS:
 BOTH PANELS TO RECEIVE IDENTICAL RATINGS
 1 INDICATES 60 MINUTE DOOR
 2 INDICATES 90 MINUTE DOOR

DOOR TYPES GENERAL NOTES:
 1. SEE DOOR SCHEDULE FOR RATING AND GLAZING REQUIREMENTS, ASSOCIATED FRAME TYPES, AND ADDITIONAL INFORMATION.
 2. AT RATED DOORS WITH VISION PANELS (TYPE C AND TYPE E), GLAZING AREA MUST BE LESS THAN 8% SQ. IN.
 3. BASIS OF DESIGN FOR STOREFRONT DOORS IS KAWNEER 19035/500 STANDARD ENTRANCES. COORDINATE DOOR AND HARDWARE FINISH AND COLOR WITH ASSOCIATED STOREFRONT

WINDOW SCHEDULE		
Type Mark	Width	Height
A	3'-0"	6'-6"
B	3'-0"	5'-6"
C	3'-0"	5'-8"
D	3'-4"	2'-6"

LOUVER SCHEDULE		
Type Mark	Width	Height
G	4'-0"	3'-0"
H	2'-6"	2'-0"

PROJECT #	229-18699-000
DATE	04/24/26
REVISIONS:	
#1 DESCRIPTION	DATE
3 Addendum #6	6/10/2026

6/10/2026 11:38:15 AM

Autodesk Docs\2405 - Virginia Tech Center Woods\2405 - VT Center Woods Architectural_RCH.rvt