

PLUMBING FIXTURE SCHEDULE

TAG	DESCRIPTION	MINIMUM CWP	MINIMUM HW	MINIMUM TRAP	MINIMUM SOL OR WASTE	MINIMUM VENT
WATER CLOSETS						
P10	(RESIDENT UNIT) KOHLER "ELUSTON" MODEL K4302 ELONGATED BOWL, FLOOR MOUNTED, WHITE, TANK TYPE, 1.28 GPF BOLT CAPS WITH SOFT CLOSE WHITE CLOSED FRONT SEAT WITH COVER, AND ANGLE SUPPLY WITH WHEEL HANDLE STOPS. PROVIDE MATTE BLACK FINISH TRIP LEVER.	1/2"	-	-	3"	1-1/2"
P11	KOHLER "ELUSTON" MODEL K4302 ELONGATED BOWL, FLOOR MOUNTED, WHITE, TANK TYPE, 1.28 GPF BOLT CAPS. PROVIDE WHITE OPEN FRONT SEAT WITHOUT COVER, WITH SLOW CLOSE STAINLESS STEEL CHECK HINGES AND ANGLE SUPPLY WITH WHEEL HANDLE STOPS. PROVIDE MATTE BLACK FINISH TRIP LEVER.	1/2"	-	-	3"	1-1/2"
LAVATORIES						
P20	(RESIDENT UNIT) LAVATORY BOWL, KOHLER "CAXTON" MODEL K-2210-N, VITREOUS CHINA, UNDERMOUNT, 16-1/4" WIDE X 16-1/4" LONG, WHITE FINISH. FAUCET: MOEN "JUNIPER" MODEL 8466SR-S, SINGLE LEVER HANDLE, 1/2 GPM, SPOT RESIST STAINLESS FINISH. ACCESSORIES: POP UP DRAIN.	1/2"	1/2"	1-1/4"	1-1/2"	1-1/2"
P31	LAVATORY BOWL, KOHLER "VERTICY", MODEL K-2882, VITREOUS CHINA, UNDERMOUNT, RECTANGULAR 19-3/4" WIDE X 15-5/8" LONG, FRONT OVERFLOW, WHITE FINISH. FAUCET: MOEN "AVIRI" MODEL 84154 FAUCET, LEVER HANDLE, 1/2 GPM, MATTE BLACK FINISH. ACCESSORIES: GRID STRAINER DRAIN, WATTS MODEL FLUS-8-M2 POINT OF USE THERMOSTATIC MIXING VALVE CONFORMING TO ASSE 1070, WITH INTEGRAL CHECK VALVES. SET MAXIMUM OUTLET TEMPERATURE TO 110 DEGREES.	1/2"	1/2"	1-1/4"	1-1/2"	1-1/2"
SINKS						
P40	(RESIDENT UNIT) KITCHEN SINK BASIN, ELKAY "CROSS TOWN" MODEL ECTRU30179RT, STAINLESS STEEL, SINGLE BOWL, UNDERMOUNT SINK, 31-1/2" WIDE X 18-1/2" LONG X 9" DEEP. (RESIDENT UNIT) KITCHEN SINK BASIN, UPGRADE OPTION: ELKAY "CROSS TOWN" MODEL ECTRU31119T, STAINLESS STEEL, DOUBLE BOWL, UNDERMOUNT SINK, 31-1/2" WIDE X 18-1/2" LONG X 9" DEEP. FAUCET: MOEN "GEORGINE" MODEL 87912SR-S, SINGLE HOLE, SINGLE LEVER HANDLE, HIGH ARC SPOUT, PULLDOWN SPRAY, 1.5 GPM, SPOT RESIST STAINLESS FINISH. ACCESSORIES: BASKET STRAINER DRAIN ASSEMBLY, DO NOT INSTALL INCLUDED DECKPLATE.	1/2"	1/2"	1-1/2"	1-1/2"	1-1/2"
P41	(RESIDENT UNIT) LAUNDRY SINK BASIN, JUST MANUFACTURING MODEL USF1818A-1, STAINLESS STEEL, SINGLE BOWL, UNDERMOUNT SINK, 18-1/2" WIDE X 18-1/2" LONG X 7-3/8" DEEP WITH OVERFLOW DRAIN. PROVIDE WITH MANUFACTURER RECOMMENDED OVERFLOW ASSEMBLY. PLUMBING CONTRACTOR TO INSTALL GARBAGE DISPOSAL. AT KITCHEN SINK, GENERAL CONTRACTOR TO FURNISH GARBAGE DISPOSAL. REFER TO ARCHITECTURAL PLANS AND SPECIFICATIONS FOR GARBAGE DISPOSAL INFORMATION. COORDINATE INSTALLATION WITH GENERAL CONTRACTOR.	1/2"	1/2"	1-1/2"	1-1/2"	1-1/2"
P42	MOP SINK, FIAT MODEL MSB-2424, MOLDED STONE, 9" QUICK DRAIN CONNECTOR, 24" WIDE X 24" LONG X 10" DEEP. FAUCET: CHICAGO MODEL 80Y-CRZF SERVICE SINK FAUCET WITH VACUUM BREAKER AND INTEGRAL CHECK VALVES AND INTEGRAL STOPS. ACCESSORIES: HOSE AND HOSE BRACKET, MOP HANGER, ADJUSTABLE WALL BRACE, PAK HOOK, STAINLESS STEEL BUMPER GUARDS ON ALL CURBS AND STAINLESS STEEL WALL GUARDS ON ALL ADJACENT WALLS.	1/2"	1/2"	3"	3"	1-1/2"
P43	(COMMUNITY ROOM) SINK BASIN, ELKAY "CROSS TOWN" MODEL ECTRU1179T, STAINLESS STEEL, SINGLE BOWL, UNDERMOUNT SINK, 18-1/2" WIDE X 18-1/2" LONG X 9" DEEP. FAUCET: MOEN "ADLER" MODEL 81233 FAUCET, SINGLE HOLE, SINGLE LEVER HANDLE, HIGH ARC SPOUT, PULLDOWN SPRAY, 1.5 GPM, MATTE BLACK FINISH. ACCESSORIES: BASKET STRAINER DRAIN ASSEMBLY, DO NOT INSTALL INCLUDED DECKPLATE.	1/2"	1/2"	1-1/2"	2"	1-1/2"
ELECTRIC WATER COOLERS						
P50	ELKAY MODEL LZ18LWSK 8L LEVEL, ADA COMPLIANT, ELECTRIC WATER COOLER WITH BUBBLER AND ELKAY EZH2O BOTTLE FILLING STATION. CAPACITY TO CHILL 8 GALLONS PER HOUR OF 50F DRINKING WATER, BASED ON 80F INLET WATER AND 90F AMBIENT TEMPERATURE. PROVIDE ANGLE STOP WITH WHEEL HANDLE, 115V POWER CONNECTION.	1/2"	-	1-1/4"	2"	1-1/2"
P51	ELKAY MODEL EZWSK EZH2O IN-WALL BOTTLE FILLING STATION. CAPACITY TO CHILL 8 GALLONS PER HOUR OF 50F DRINKING WATER, BASED ON 80F INLET WATER AND 90F AMBIENT TEMPERATURE. PROVIDE ANGLE STOP WITH WHEEL HANDLE, CHILLER UNIT MOUNTED IN WALL BEHIND UNIT, 115V POWER CONNECTION.	1/2"	-	1-1/4"	2"	1-1/2"
SHOWERS/BATHING UNITS						
P60	SHOWERS SHALL HAVE A MAXIMUM FLOW RATE OF 2.5 GALLONS PER MINUTE. UNITS SHALL BE CONFIGURED LEFT-HAND AND RIGHT-HAND UNITS AS REQUIRED BY FLOOR PLAN LAYOUT. PROVIDE INLET CHECK STOPS ON ALL SHOWER VALVES THAT ARE CONNECTED TO HAND-HELD SHOWER WANDS WITH ON/OFF CAPABILITY.					
P61	(RESIDENT UNIT) SURROUND: WALLS AND FLOOR TO BE TILE. SEE ARCHITECTURAL FINISH SPECIFICATIONS. SHOWER TRIM: MOEN "BELFELD" MODEL T2310 PRESSURE-BALANCED MIXING DIVERTER VALVE WITH FIELD INSTALLED CHECK STOPS. MOEN MODEL 52710EP, 2.5 GPM HAND HELD SHOWER WITH 72" METAL HOSE, VACUUM BREAKER, AND 30" SLIDE BAR, AND MOEN "VERSO" MODEL Z26RS, 2.5 GPM SHOWER HEAD, BRUSHED NICKEL FINISH. PROVIDE ALL REQUIRED MATCHING MANUFACTURER ACCESSORIES.	1/2"	1/2"	2"	2"	1-1/2"
P61	(RESIDENT UNIT D DELUXE) BATH/TUB: KOHLER STERLING "SPECTACLE" MODEL K-95337, 60-18" X 34-1/4" FREESTANDING BATH WITH ACRYLIC FINISH. TRIM: MOEN "VOSO" MODEL T694, 1.75 GPM, TWO HANDLE ROMAN TUB FAUCET TRIM WITH DIVERTER VALVE AND SINGLE FUNCTION HANDSHOWER WITH CHECK VALVES, BRUSHED NICKEL FINISH. PROVIDE ALL REQUIRED MATCHING MANUFACTURER ACCESSORIES.	1/2"	1/2"	1-3/4"	2"	1-1/2"
MISCELLANEOUS						
P70	WASHING MACHINE CONNECTION BOX: UNIT SHALL BE RECESSED TYPE, BOX AND FACE PLATE SHALL BE CONSTRUCTED OF MINIMUM 20 GAUGE STEEL WITH EPOXY FINISH, OR HEAVY-DUTY PLASTIC ABS. UNIT SHALL BE FITTED WITH 2 INCH DRAIN CONNECTION, SUPPLY HOSE CONNECTIONS AS REQUIRED, WATER HAMMER ARRESTORS CONFORMING TO ASSE 1010, BOXES LOCATED ON RATED CORRIDOR OR RATED UNIT SEPARATION WALL SHALL BE A FIRE-RATED BOX ASSEMBLY APPROVED FOR FIRE-RATED INSTALLATION. EXACT CONFIGURATION OF WATER SUPPLIES AND DRAIN LOCATION SHALL BE VERIFIED IN FIELD TO SUIT FIELD CONDITIONS. AVOID CONFLICT WITH DRYER EXHAUST, ELECTRICAL COMPONENTS, WALL FRAMING, ETC.	1/2"	1/2"	2"	2"	1-1/2"
P71	ICE MAKER CONNECTION BOX: UNIT SHALL BE RECESSED TYPE, BOX AND FACE PLATE SHALL BE CONSTRUCTED OF MINIMUM 20 GAUGE STEEL WITH EPOXY FINISH, OR HEAVY-DUTY PLASTIC ABS. UNIT SHALL BE FITTED WITH SUPPLY VALVE AND WATER HAMMER ARRESTOR, BOXES LOCATED ON RATED CORRIDOR OR RATED UNIT SEPARATION WALL SHALL BE A FIRE-RATED BOX ASSEMBLY APPROVED FOR FIRE-RATED INSTALLATION. MOUNT BOTTOM OF BOX ABOVE TRIM BASEBOARD. FIELD VERIFY EXACT LOCATION.	1/2"	-	-	-	-
EPWH	FREEZEPROOF WALL HYDRANT: EQUAL TO WOODFORD MODEL 86S, AUTOMATIC DRAINING CHROME-PLATED WALL HYDRANT. MOUNT 24" ABOVE FINISHED GRADE, UNLESS WALL CONSTRUCTION MATERIALS DICTATE ALTERNATE MOUNTING HEIGHT. FIELD VERIFY EXACT LOCATION.	3/4"	-	-	-	-
TP	PROVIDE BRONZE TRAP PRIMER VALVE WITH AUTOMATIC VACUUM BREAKER COMPLYING WITH ASSE 1018 WITH 1/2" CONNECTIONS MATCHING PIPING SYSTEM. PROVIDE TRAP PRIMERS BY PRECISION PLUMBING PRODUCTS, INC., JOSAM, MFG. CO., ZURN INDUSTRIES INC., SMITH MFG. CO., OR WATTS DRAINAGE.	1/2"	-	-	-	-
ETP	PRECISION PLUMBING PRODUCTS (PPP) ELECTRONIC TRAP PRIMER, MINI-PRIME MODEL MPB-500-115V, 115 VOLT ELECTRICAL POWER CONNECTION REQUIRED. UNIT PROVIDED WITH SHUT-OFF VALVE AT INLET OF PRIMER ASSEMBLY. PROVIDE WITH OPTIONAL DISTRIBUTION UNIT WHERE REQUIRED.	1/2"	-	-	-	-
HB	HOSE BIBB: EQUAL TO WOODFORD MODEL NO. 26, ROUGH BRASS FINISH, WITH 3/4" HOSE CONNECTION, VACUUM BREAKER, AND LOOSE KEY HANDLE.	1/2"	-	-	-	-
PH	ROOF POST HYDRANT: EQUAL TO ZURN Z1395, NON-FREEZE, WITH VACUUM BREAKER, 3/4" HOSE CONNECTION. DEPTH OF BURY TO BE BASED UPON 4 FEET SO THAT DRAIN PORT IS LOCATED BELOW ATTIC INSULATION IN CEILING SPACE OF ROOM BELOW. FIELD VERIFY DEPTH OF BURY PRIOR TO ORDERING.	3/4"	-	-	-	-

1. FIXTURES SHALL BE PROVIDED WITH ALL ITEMS, ARTICLES, MATERIALS AND INCIDENTALS, AS REQUIRED, INCLUDING ALL LABOR NECESSARY FOR A COMPLETE PLUMBING INSTALLATION.
2. THE PLUMBING CONTRACTOR SHALL CLEAN ALL FIXTURES, POLISH ALL METAL PARTS, CHECK AND ADJUST ALL FITTINGS, FAUCETS AND VALVES. ALL OPERATING INSTRUCTIONS SHALL BE TURNED OVER TO THE GENERAL CONTRACTOR FOR PRESENTATION TO THE OWNER.
3. PROVIDE INDIVIDUAL STOPS ON ALL PLUMBING FIXTURES.
4. ALL LAVATORY, SINK, LAUNDRY TUB, WATER COOLER AND SIMILAR FIXTURE TRAPS, INCLUDING THOSE MOUNTED IN CASEWORK, SHALL BE CHROME PLATED, CAST BRASS, MINIMUM 17-GAUGE, ADJUSTABLE TYPE WITH CLEANOUT PLUG.
5. PROVIDE CHROME PLATED ANGLE STOPS WITH WHEEL HANDLES AT FIXTURE SUPPLY THROUGH WALLS, INCLUDING THOSE MOUNTED IN CASEWORK.
6. ALL EXPOSED SUPPLY PIPES, STOPS, FLEXIBLE RISERS, INCLUDING THOSE MOUNTED IN CASEWORK, SHALL HAVE A POLISHED CHROME PLATED FINISH AND BE OF THE SAME MANUFACTURER THROUGHOUT THE JOB.
7. PROVIDE CHROME PLATED ESCUTCHEONS AT ALL FIXTURE SUPPLY AND WASTE PIPE PENETRATIONS THROUGH WALLS, INCLUDING THOSE MOUNTED IN CASEWORK.
8. ALL WATER CLOSET FLUSHING MECHANISMS ON HANDICAP WATER CLOSETS SHALL BE INSTALLED ON THE "WIDE SIDE" OF EACH WATER CLOSET TO MAINTAIN ADA ACCESSIBILITY.
9. PROVIDE INLET CHECK STOPS ON ALL FIXTURES (I.E. MOP SINKS, KITCHEN PRE-RINSE SPRAY UNITS, SHOWER VALVES, SPA BATHING UNITS AND SIMILAR FIXTURE(S) SUSCEPTIBLE TO BACKFLOW/CROSS CONNECTION SITUATIONS.
10. PROVIDE CONCEALED FIXTURE CARRIERS AND SUPPORTS OF PROPER TYPE AND DESIGN TO SUIT JOB CONDITIONS. PROVIDE CARRIERS BY J.R. SMITH MFG. CO., ZURN INDUSTRIES, INC., JOSAM MFG. CO., WADE DIVISION/TYLER PIPE.
11. PLUMBING FIXTURE COLORS SHALL BE SELECTED BY ARCHITECT/OWNER AT A LATER DATE FROM STANDARD FACTORY COLORS, UNLESS OTHERWISE NOTED TO BE DESIGNER COLOR IN SCHEDULE.
12. PLUMBING FIXTURES AND TRIM SPECIFIED IN THIS SCHEDULE ARE TO ESTABLISH A STANDARD LEVEL OF QUALITY. OTHER MANUFACTURERS MAY BE CONSIDERED EQUAL. SEE LISTINGS BELOW FOR SOME MANUFACTURERS CONSIDERED EQUALS. OTHER MANUFACTURERS NOT LISTED BELOW MAY ALSO BE CONSIDERED WITH WRITTEN APPROVALS OBTAINED FROM ARCHITECT AND/OR ENGINEER PRIOR TO TEN DAYS BEFORE BIDS ARE DUE.
 - A. **VITREOUS CHINA PLUMBING FIXTURES:** AMERICAN STANDARD, SLOAN, KOHLER, ZURN
 - B. **MOP SINKS:** FIAT, E.L. MUSTIE, PROFLO
 - C. **STAINLESS STEEL SINKS:** ELKAY, DAYTON, JUST
 - D. **FAUCETS, SHOWER VALVES AND TRIM, FLUSH VALVES:** AMERICAN STANDARD, KOHLER, SLOAN, ELKAY, MOEN, T&S BRASS, DELTA, CHICAGO
 - E. **WATER COOLERS, DRINKING FOUNTAINS:** ELKAY, SLOAN, OASIS, SUNROC, HALSEY TAYLOR
13. PROVIDE SHOP DRAWINGS/SUBMITTAL AND OPERATIONS MANUAL FOR ALL ITEMS LISTED ABOVE IN PLUMBING FIXTURE SCHEDULE.
14. MINIMUM SIZES IN SCHEDULE ABOVE REPRESENT MINIMUM PLUMBING FIXTURE CONNECTIONS ALLOWED AND DOES NOT REFLECT SPECIAL SITUATIONS SUCH AS WET VENTING, WASTE STACK VENTS, COMBINATION WASTE AND VENT SYSTEMS, ETC. REFER TO PLANS AND/OR RISER DIAGRAMS FOR PIPE SIZES AND ADDITIONAL INFORMATION.

EQUIPMENT SCHEDULE

PROVIDE SHOP DRAWINGS/SUBMITTAL AND OPERATIONS MANUAL FOR ALL ITEMS LISTED BELOW. PROVIDE EQUIPMENT TAGS PER SPECIFICATIONS FOR ALL ITEMS LISTED IN THIS SCHEDULE.	
WH1	WATER HEATER - EQUAL TO A.O. SMITH MODEL NO. 8TH-120 NATURAL GAS FRED ASME WATER HEATER WITH GLASS TANK LININGS AND CONDENSATE NEUTRALIZING KIT. HEATER TO HAVE 100 GALLON NOMINAL STORAGE CAPACITY WITH RECOVERY CAPACITY OF 138 GPM AT 100°F TEMPERATURE RISE. 120 CFM INPUT RATING, 120V ELECTRICAL CONNECTION.
ET1	THERMAL EXPANSION COMPENSATOR - EQUAL TO AMTROL ST-20V-C, ASME RATED, 10.3 GALLON CAPACITY.
TMV1	THERMOSTATIC MIXING VALVE - EQUAL TO LEONARD "NUCLEUS" MODEL NO. NV-15L-F-R-TS, DIGITAL MIXING VALVE WITH 1-1/4" INLET AND 1-1/2" OUTLET CONNECTIONS, INLET, OUTLET AND RETURN TEMPERATURE SENSORS, 200 PSI MAXIMUM OPERATING PRESSURE, VALVE TO HAVE MAXIMUM PRESSURE DROP OF 5 PSI AT 50 GPM FLOW RATE. PROVIDE WALL MOUNTING BRACKET AND ALL REQUIRED ACCESSORIES FOR A COMPLETE OPERATIONAL SYSTEM. 120V ELECTRICAL CONNECTION.
SP1	ELEVATOR SUMP PUMP - EQUAL TO STANCOR SE-50 ELEVATOR SUMP PUMP, 1/2 HP, 120V, 1 PHASE. PROVIDE WITH WATER LEVEL PROBE AND CONTROL PANEL.
BFP1, BFP2	BACKFLOW PREVENTER - EQUAL TO ZURN WILKINS MODEL NO. 875X-S-TCU. PROVIDE WITH AIR GAP ASSEMBLY, TURNER TURN BALL VALVES, TEST VALVES AND WYE STRAINER ON INLET SIDE OF VALVE.
CP1	HOT WATER RECIRCULATION PUMP - EQUAL TO BELLI AND COSSETT "ECOCIRC" PUMP MODEL NO. XL-A-36-45 WITH CAPACITY OF 14 GPM @ XX FT HEAD, 1/6 HP, 115V, 1 PHASE, WITH STAINLESS STEEL CONSTRUCTION.
BP1	DOMESTIC WATER BOOSTER PUMP - EQUAL TO TOWLE WHITNEY PUMP MODEL NO. TW2018-80W-40 DUPLEX PUMP SYSTEM WITH 1-1/2 HP, 208V, 3 PHASE MOTORS, VFDs ON PUMPS, 20 GALLON HYDRO ACCUMULATOR TANK, CONTROL PANEL, 2" COPPER HEADERS, AND ALL REQUIRED ACCESSORIES FOR A COMPLETE OPERATIONAL SYSTEM. SYSTEM CAPACITY OF 80 GPM TOTAL, 40 GPM EACH PUMP. OUTLET PRESSURE TO BE SET AT 70 PSI.

PLUMBING DRAINS/CLEANOUT SCHEDULE

PROVIDE SHOP DRAWINGS/SUBMITTAL AND OPERATIONS MANUAL FOR ALL ITEMS LISTED BELOW.	
CLEANOUTS:	CLEANOUTS SHALL BE LINE SIZE UP TO 4" FOR PIPE SIZES LARGER THAN 4" PROVIDE A 4" CLEANOUT, WHERE ALLOWED BY CODE AND AUTHORITY HAVING JURISDICTION. ALL EXTERIOR AND INLINE CLEANOUTS SHALL BE TWO-WAY.
CO	EXPOSED HORIZONTAL OR VERTICAL CLEANOUT IN PIPING EXPOSED OR CONCEALED ABOVE ACCESSIBLE CEILINGS.
FCO	(REFER TO ARCHITECTURAL DRAWINGS FOR FLOOR FINISH INFORMATION. PROVIDE CLEANOUTS AS DESCRIBED BELOW.) <ol style="list-style-type: none">1. FOR AREAS WHERE CARPET WILL BE INSTALLED PROVIDE ROUND ADJUSTABLE CLEANOUT WITH CARPET MARKER.2. BACK OF HOUSE AREAS (I.E. KITCHEN, UTILITY ROOMS, LAUNDRY ROOMS AND SIMILAR SPACES) WHERE TILE FLOORS ARE TO BE INSTALLED, PROVIDE SQUARE ADJUSTABLE CLEANOUT WITH STAINLESS STEEL COVER.3. IN PUBLIC AREAS (I.E. DINING ROOMS, CORRIDORS, OFFICES, CONFERENCE ROOMS AND SIMILAR SPACES) WHERE TILE FLOORS ARE TO BE INSTALLED, PROVIDE SQUARE ADJUSTABLE CLEANOUT WITH RECESS TILE COVER.4. IN AREAS SUBJECT TO TRAFFIC (I.E. PARKING GARAGES, PARKING SPACES AND SIMILAR SPACES) PROVIDE HEAVY DUTY TRAFFIC RATED CLEANOUT COVER.
CCO	CLEANOUT TO GRADE WITH HEAVY DUTY ACCESS COVER CAST IN A 12" X 12" X 4" THICK CONCRETE PAD. (PAD MAY BE ELIMINATED IN POURED CONCRETE SIDEWALKS, DRIVEWAYS, PATIOS, ETC.)
WCO	PROVIDE CLEANOUT IN VERTICAL PIPE WITH STAINLESS STEEL ACCESS COVER (WHERE PIPES ARE CONCEALED IN WALLS OR CHASES).
ROOF/OVERFLOW DRAINS: ACCEPTABLE MANUFACTURERS: ZURN, WATTS, JOSAM, JAY R. SMITH, FROET INDUSTRIES	
RD	ROOF DRAIN - EQUAL TO ZURN 100. DRAIN SHALL HAVE DURA-COATED CAST IRON BODY WITH POLY-DOME, COMBINATION MEMBRANE FLASHING CLAMP/GRAVEL GUARDS, SUMP RECEIVER, UNDERDECK CLAMPING DEVICE, EXTENSION COLLAR TO SUIT THICKNESS OF INSULATION.
OD	OVERFLOW DRAIN - EQUAL TO ZURN Z100-W2. DRAIN SHALL HAVE DURA-COATED CAST IRON BODY WITH POLY-DOME, INTERNAL OVERFLOW WATER DAM, COMBINATION MEMBRANE FLASHING CLAMP/GRAVEL GUARDS, SUMP RECEIVER, UNDERDECK CLAMPING DEVICE, EXTENSION COLLAR TO SUIT THICKNESS OF INSULATION.
ODS	OVERFLOW DISCHARGE SPOUT - EQUAL TO ZURN ZF109, OVERFLOW DISCHARGE SPOUT, ALUMINUM BODY WITH FLAPPER. FIELD VERIFY WATER PIPING WITHIN "PLUMBING ROOM" SHALL BE SELECTED BY ARCHITECT.
FLOOR DRAINS AND FLOOR SINKS: ACCEPTABLE MANUFACTURERS: ZURN, WATTS, JOSAM, JAY R. SMITH.	
NOTES: <ol style="list-style-type: none">1. PROVIDE P-TRAPS, SEAL DEPTH AS REQUIRED BY PLUMBING CODE, WITH ALL FLOOR DRAINS AND FLOOR SINKS, UNLESS NOTED OTHERWISE.2. DRAINS SHALL BE INSTALLED WITH TOP OF DRAIN FLUSH WITH FINISHED FLOOR, UNLESS NOTED OTHERWISE, AND IN ACCORDANCE WITH MANUFACTURER'S RECOMMENDATIONS.3. ALL DRAINS INSTALLED IN SLABS OR PATIOS NOT IN SLABS ON GRADE TO BE PROVIDED WITH MEMBRANE/LEAD FLASHINGS 3'-4" SQUARE. VERIFY EXACT SIZE ON SITE.	
FD1	(MECHANICAL PLUMBING ROOMS, SIMILAR SPACES) - FLOOR DRAIN - EQUAL TO ZURN Z550-Y. DURA-COATED CAST IRON BODY WITH BOTTOM OUTLET, 8" DIAMETER STRAINER, AND SEDIMENT BUCKET. PROVIDE WITH TRAP PRIMER CONNECTION WHERE INDICATED ON DRAWINGS.
FS1	(CONCRETE FLOORS) - FLOOR SINK - EQUAL TO ZURN ZB180, 4" BOTTOM OUTLET, CAST-IRON BODY, ANTI-SPLASH INTERIOR AND SEDIMENT BUCKET, NICKEL BRONZE 1/2 GRATE, 12" SQUARE BY 6" DEEP.

PIPING INSULATION SCHEDULE

PIPING SYSTEM TYPE (OPERATING TEMPERATURE RANGE)	PIPING SIZE RANGE	INSULATION THICKNESS	INSULATION JACKET	VAPOR BARRIER	REMARKS
DOMESTIC COLD WATER PIPING (40°F - 60°F)	1/2" TO 1-1/4"	1/2"	ASJ	YES	1, 2, 3, 4
	1-1/2" AND LARGER	1"			
DOMESTIC HOT WATER SUPPLY AND RETURN PIPING (105°F - 140°F)	1/2" TO 1-1/4"	1"	ASJ	NO	1, 2, 3, 4
	1-1/2" AND LARGER	1-1/2"			
ROOF AND OVERFLOW DRAIN STORM PIPING		ALL PIPE SIZES	1/2"	ASJ	YES 1, 2, 4, 5
REMARKS: <ol style="list-style-type: none">1. REFER TO PLUMBING INSULATION SPECIFICATIONS FOR ADDITIONAL INFORMATION.2. PIPING MATERIAL TO BE GLASS FIBER, PREFORMED PIPE INSULATION. INSTALL PER MANUFACTURERS RECOMMENDATIONS.3. INSULATION THICKNESS LISTED IS MINIMUM REQUIRED. INSULATION THICKNESS SHALL BE IN ACCORDANCE WITH ALL APPLICABLE STATE AND LOCAL ENERGY CODES.4. ASJ = ALL SERVICE JACKET5. ALL ROOF AND OVERFLOW DRAIN BODIES AND PIPING FROM THE DRAIN TO THE FIRST VERTICAL RISER DROP.					

GENERAL PLUMBING NOTES

1. ALL PLUMBING WORK SHALL BE INSTALLED IN COMPLIANCE WITH ALL STATE AND LOCAL CODES, AMENDMENTS AND ORDINANCES.
2. THE PLUMBING CONTRACTOR SHALL DETERMINE NECESSARY INVERT ELEVATIONS FOR PROPER DRAINAGE AND CONNECTION INTO SEWERS. ALL INVERT ELEVATIONS SHALL BE SET PRIOR TO INSTALLATION.
3. ALL PIPING PASSING THROUGH FIRE RATED OR FIRE AND SMOKE RATED ASSEMBLIES SHALL BE SLEEVED AND FIRESTOPPED. FIRESTOPPING SHALL COMPLY WITH U.L. LISTING AND REQUIREMENTS FOR ASSEMBLY TYPE BEING PENETRATED.
4. PLUMBING CONTRACTOR SHALL NOT CORE DRILL OR DISTURB ANY STRUCTURAL MEMBERS WITHOUT WRITTEN AUTHORIZATION BY THE ARCHITECT AND/OR STRUCTURAL ENGINEER.
5. PLUMBING CONTRACTOR SHALL COORDINATE PIPING LOCATIONS AND ROUTING WITH OTHER PIPING DUCTWORK AND ELECTRICAL CONDUIT INSTALLATIONS. PLUMBING CONTRACTOR SHALL REVIEW ARCHITECTURAL DRAWINGS TO ESTABLISH WHERE FURF-DOWNS AND SOFFITS OCCUR AND DIMENSIONS OF SAME SO THAT DISTANCES AND PIPING ROUTING CAN BE PROPERLY COORDINATED. ALL PIPING SHALL BE ROUTED IN A CONCEALED MANNER.
6. PLUMBING CONTRACTOR SHALL AVOID LOCATING HW/CW PIPING IN LOCATIONS WHERE POSSIBILITY OF FREEZING OF SAME EXISTS. CONTRACTOR SHALL ADVISE ENGINEER WHERE THIS CONDITION MAY OCCUR PRIOR TO ROUGH-IN.
7. ALL ADA ACCESSIBLE LAVATORIES AND SINKS WITH EXPOSED WATER AND DRAIN PIPES SHALL BE INSULATED TO PROTECT AGAINST CONTACT PER ADA REQUIREMENTS. THERE SHALL BE NO SHARP OR ABRASIVE SURFACES.
8. COORDINATE ROUTING OF ALL PIPING WITH THE ELECTRICAL CONTRACTOR SO AS NOT TO ROUTE ANY PLUMBING LINES OVER ELECTRICAL PANELS, SWITCHGEAR, ETC.
10. PLASTIC PIPING SHALL NOT BE INSTALLED IN ANY SPACE THAT IS A RETURN AIR PLENUM. COORDINATE WITH MECHANICAL CONTRACTOR FOR PLENUM LOCATIONS PRIOR TO INSTALLATION OF ANY PIPING. ONLY PLASTIC PIPING THAT IS APPROVED FOR PLENUM SPACES AND IS APPROVED BY THE LOCAL AUTHORITY HAVING JURISDICTION MAY BE INSTALLED IN RETURN AIR PLENUMS.
11. PIPING AND EQUIPMENT HANGERS SHALL BE SPACED IN A SYSTEMATIC RANDOM PATTERN AS REQUIRED TO ELIMINATE OVERLOADING INDIVIDUAL STRUCTURAL MEMBERS. THE ESTIMATED WEIGHT ASSIGNED TO PIPE AND EQUIPMENT HANGERS SHALL BE DETERMINED BY THE PLUMBING CONTRACTOR AND SUBMITTED TO THE GENERAL CONTRACTOR FOR REVIEW, COORDINATION AND APPROVAL PRIOR TO INSTALLATION. THIS REQUIREMENT APPLIES TO ALL PLUMBING PIPING.
12. INSTALL PLUMBING VENTS THROUGH ROOF A MINIMUM OF 24" FROM EDGE OF ROOF AND/OR PARAPET WALLS. LOCATE ALL VENTS THROUGH ROOF A MINIMUM OF 10'-0" FROM ALL OUTSIDE AIR INTAKES.
13. ALL UNDERGROUND PLUMBING PIPING SUBJECT TO FREEZING SHALL BE INSTALLED BELOW LOCAL AREA FROST LINE MINIMUM. VERIFY SITE FROST DEPTH.
14. COORDINATE LOCATION OF ALL BELOW GRADE PIPING WITH STRUCTURAL FOUNDATIONS, FOOTINGS, GRADE BEAMS, ETC. TO AVOID CONFLICT.
15. **REFER TO SPECIFICATION SECTION 231123 FACILITY NATURAL GAS PIPING FOR GAS PIPING AND INSTALLATION INFORMATION.**

PLUMBING PIPING MATERIALS

BELOW IS A LIST OF PLUMBING PIPING MATERIALS TO BE USED. REFER TO SPECIFICATIONS FOR ADDITIONAL INFORMATION REGARDING PLUMBING MATERIAL STANDARDS COMPLIANCE, COMPONENTS AND INSTALLATION OF PIPING MATERIALS.

DOMESTIC WATER PIPING

UNDER BUILDING SLAB DOMESTIC WATER PIPING TO BE ONE OF THE FOLLOWING:

- ANNEALED COPPER TUBE, TYPE "K", WROUGHT COPPER. COPPER PIPING ROUTED BELOW SLAB SHALL BE CONTINUOUS RUN WITH NO FITTINGS OR JOINTS.
- PEX TUBING, PEX PIPING ROUTED BELOW SLAB SHALL BE CONTINUOUS RUN WITH NO FITTINGS OR JOINTS.

ABOVEGROUND DOMESTIC WATER PIPING 3" AND SMALLER SHALL BE ONE OF THE FOLLOWING:

- DRAIN TEMPERED COPPER TUBE, TYPE "L", WROUGHT COPPER, SOLDERED JOINT FITTINGS AND SOLDERED JOINTS.
- ALL DOMESTIC WATER PIPING WITHIN "PLUMBING ROOM" SHALL BE COPPER.

ABOVEGROUND DOMESTIC WATER PIPING 1" AND SMALLER WITHIN RESIDENT UNITS DOWNSTREAM OF UNIT SHUT-OFF VALVE SHALL BE ONE OF THE FOLLOWING:

- PEX TUBING, WITH METAL INSERT FITTINGS AND COPPER CRIMP RINGS.
- PEX TUBING, WITH COLD EXPANSION FITTINGS AND REINFORCING RINGS.

SANITARY WASTE AND STORM PIPING

UNDERGROUND WASTE AND STORM PIPING SHALL BE ONE OF THE FOLLOWING:

- PVC, SCHEDULE 40, WITH DWW PATTERN SOCKET FITTINGS AND SOLVENT CEMENTED JOINTS.

ABOVEGROUND WASTE PIPING SHALL BE ONE OF THE FOLLOWING:

- HUBLESS, CISPI LABELED, CAST IRON SOL PIPE AND DWW PATTERN FITTINGS WITH CISPI LABELED HUBLESS COUPLINGS AND COUPLED JOINTS.
- PVC, SCHEDULE 40, WITH DWW PATTERN SOCKET FITTINGS AND SOLVENT CEMENTED JOINTS.

ABOVEGROUND STORM PIPING SHALL BE ONE OF THE FOLLOWING:

- HUBLESS, CISPI LABELED, CAST IRON SOL PIPE AND DWW PATTERN FITTINGS WITH CISPI LABELED HUBLESS COUPLINGS AND COUPLED JOINTS.
- HUBLESS, CISPI LABELED, CAST IRON SOL PIPE AND DWW PATTERN FITTINGS WITH CISPI LABELED HEAVY-DUTY HUBLESS COUPLINGS AND COUPLED JOINTS.
- PVC, SCHEDULE 40, WITH DWW PATTERN SOCKET FITTINGS AND SOLVENT CEMENTED JOINTS.

VENT PIPING

UNDERGROUND AND ABOVEGROUND VENT PIPING SHALL BE THE FOLLOWING:

- PVC, SCHEDULE 40, WITH DWW PATTERN SOCKET FITTINGS AND SOLVENT CEMENTED JOINTS.

NATURAL GAS PIPING

UNDERGROUND NATURAL GAS PIPING SHALL BE ONE OF THE FOLLOWING:

- POLYETHYLENE PIPING WITH HEAT FUSION JOINTS.
- POLYETHYLENE PIPING WITH MECHANICAL JOINTS WHERE ALLOWED BY CODE.

ABOVEGROUND NATURAL GAS PIPING 2" AND SMALLER TO BE THE FOLLOWING:

- SCHEDULE 40 BLACK STEEL PIPING AND FITTINGS WITH THREADED JOINTS.

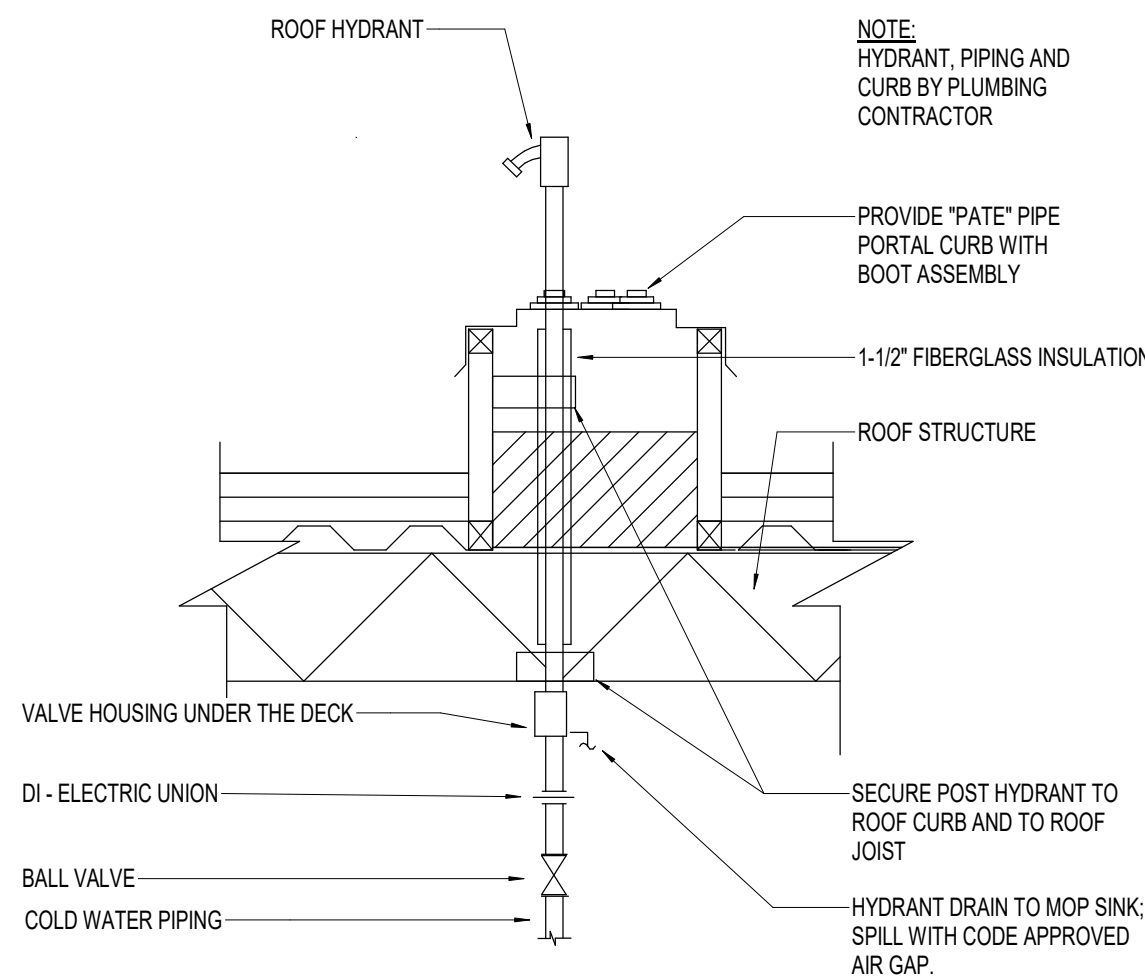
ABOVEGROUND NATURAL GAS PIPING 2-1/2" AND LARGER TO BE THE FOLLOWING:

- SCHEDULE 40 BLACK STEEL PIPING AND FITTINGS WITH WELDED JOINTS.

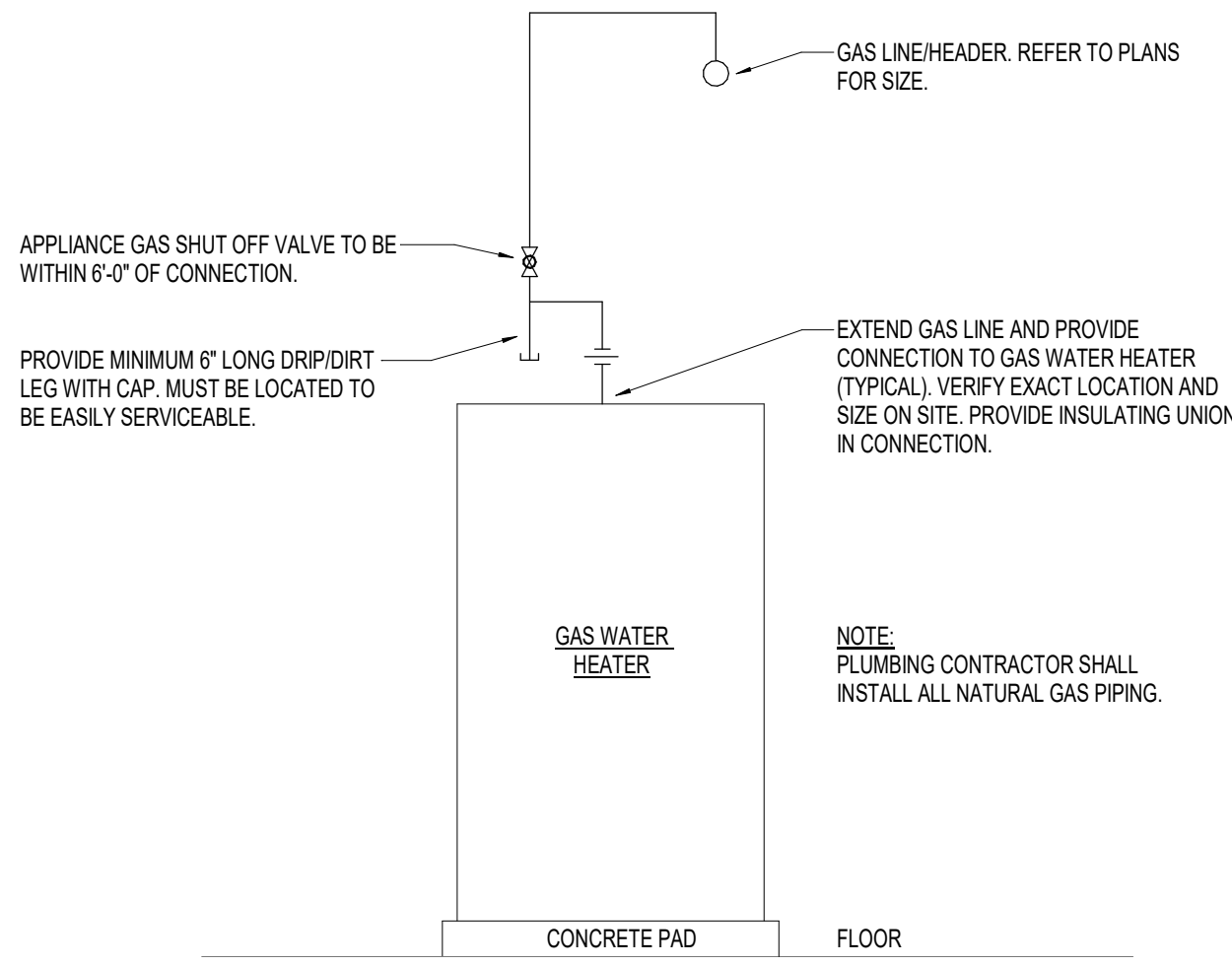
PLUMBING SYMBOLS AND ABBREVIATIONS LEGEND

DIRECTION OF FLOW		AW AHJ	AIR ADMITTANCE VALVE AUTHORITY HAVING JURISDICTION
PIPE TURNING UP		CW CFH	CUBIC FEET PER HOUR COLD WATER
PIPE TURNING DOWN		DFU DWW	DRAINAGE FIXTURE UNITS DRAINAGE, WASTE AND VENT
BRANCH CONNECTION - TOP		EA EX	EACH EXISTING
BRANCH CONNECTION - BOTTOM		F FFE FU	FAHRENHEIT FINISHED FLOOR ELEVATION FEET FIXTURE UNITS (WATER)
BRANCH CONNECTION - SIDE		GPM GPM	GALLONS PER HOUR GALLONS PER MINUTE
SERVICE VALVE (BALL OR GATE)		HP HW HWR	HORSEPOWER HOT WATER HOT WATER RETURN
CHECK VALVE		IE	INVERT ELEVATION
PRESSURE REDUCING VALVE / PRESSURE REGULATOR		KW	KILOWATT
GAS SHUT-OFF VALVE		NC NO	NORMALLY CLOSED NORMALLY OPEN
GAS SOLENOID VALVE		PD	PUMP DISCHARGE
CONNECT NEW TO EXISTING		PRV PVC	PRESSURE REDUCING VALVE POUNDS PER SQUARE INCH POLYVINYL CHLORIDE
POINT OF DISCONNECTION		SF	SQUARE FEET
COLD WATER PIPING		V VTR	VENT VENT THROUGH ROOF
HOT WATER SUPPLY		W WC	WASTE WATER COLUMN
HOT WATER RETURN			
SANITARY SEWER PIPING			
VENT PIPING			
ROOF DRAIN STORM PIPING			</

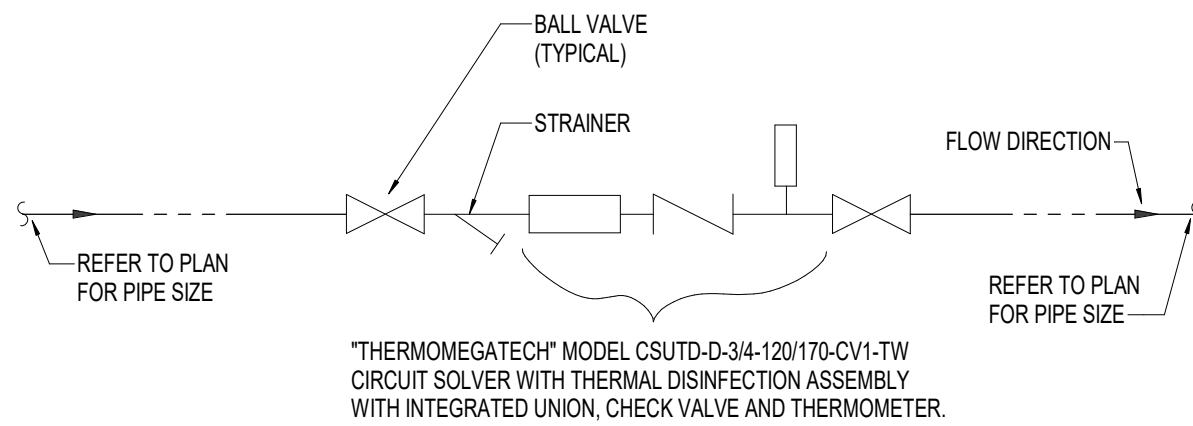
Copyright © 2024 SFCS, Inc. All rights reserved. This drawing is the property of SFCS, Inc. and is not to be reproduced, stored in a retrieval system, or transmitted in any form or by any means, electronic, mechanical, photocopying, recording, or by any information storage and retrieval system, without the prior written permission of SFCS, Inc. The information contained herein may vary from information shown on the Contract Drawings. Use of this information shall be in full compliance with the provisions of the contract. The user of this information shall assume all liability for any and all consequences arising from the use of this information. Brandon Oaks, Virginia 24011-2003



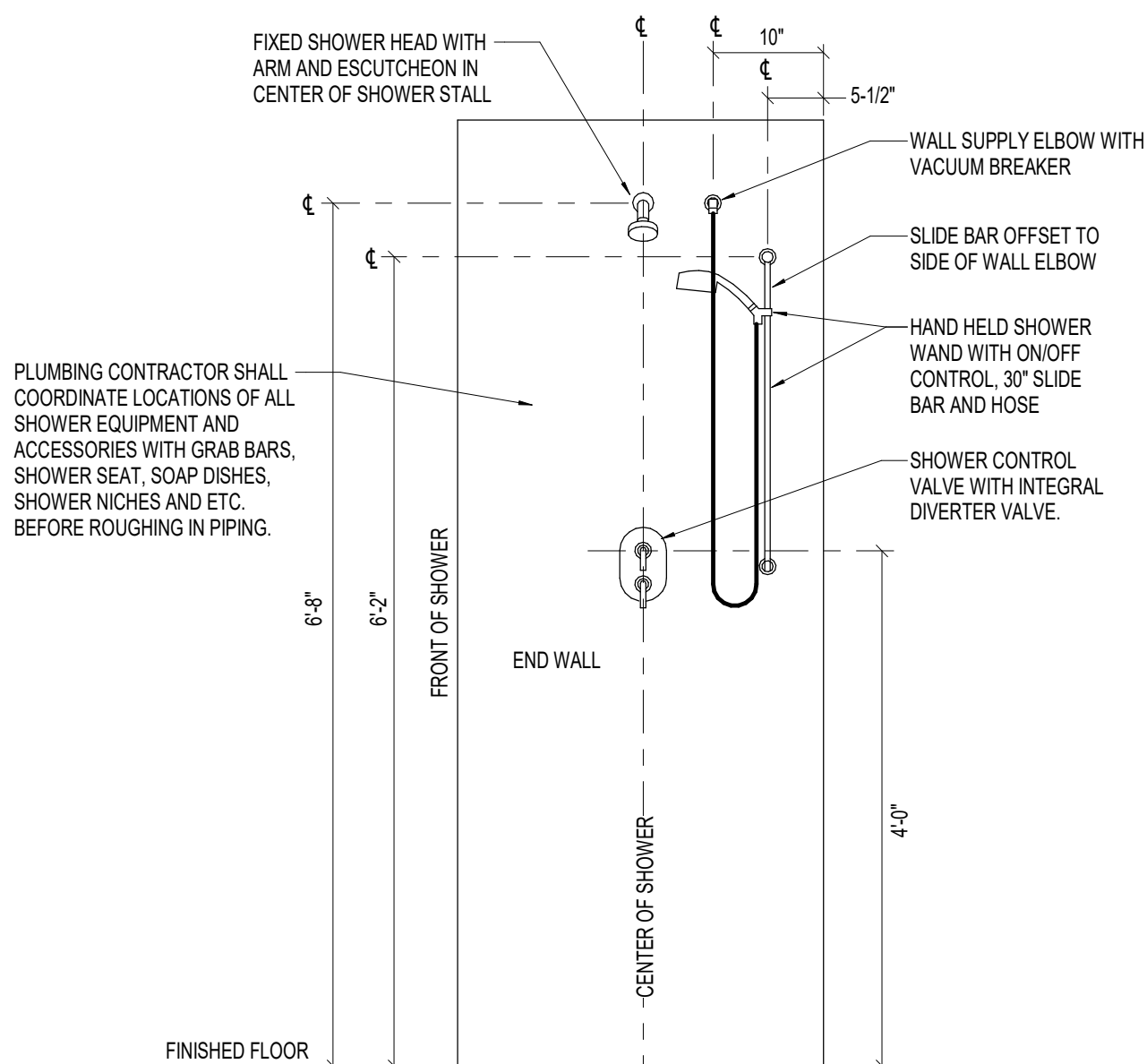
7 ROOF HYDRANT DETAIL
P0.1 N.T.S.



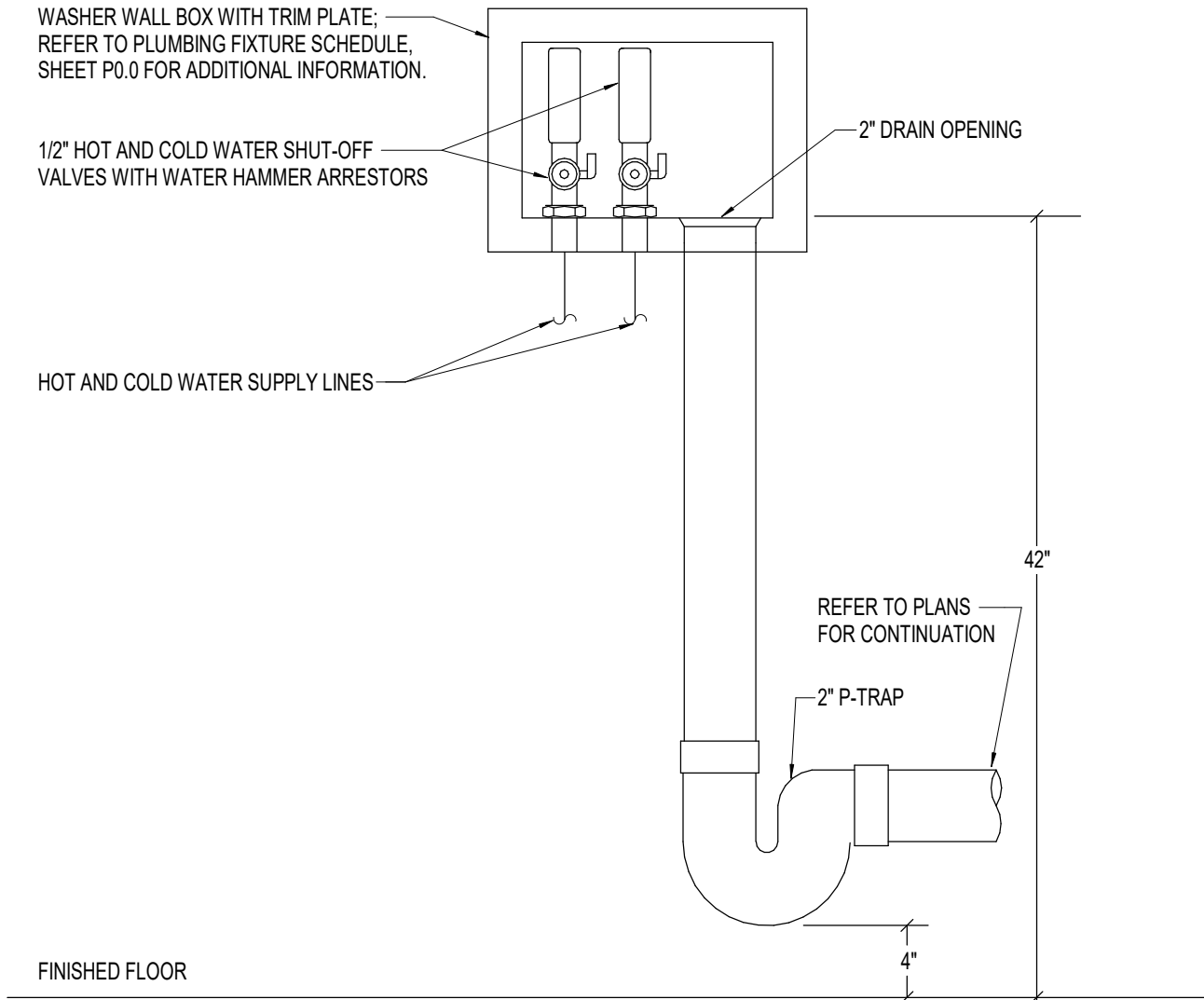
6 GAS WATER HEATER CONNECTION DETAIL
P0.1 N.T.S.



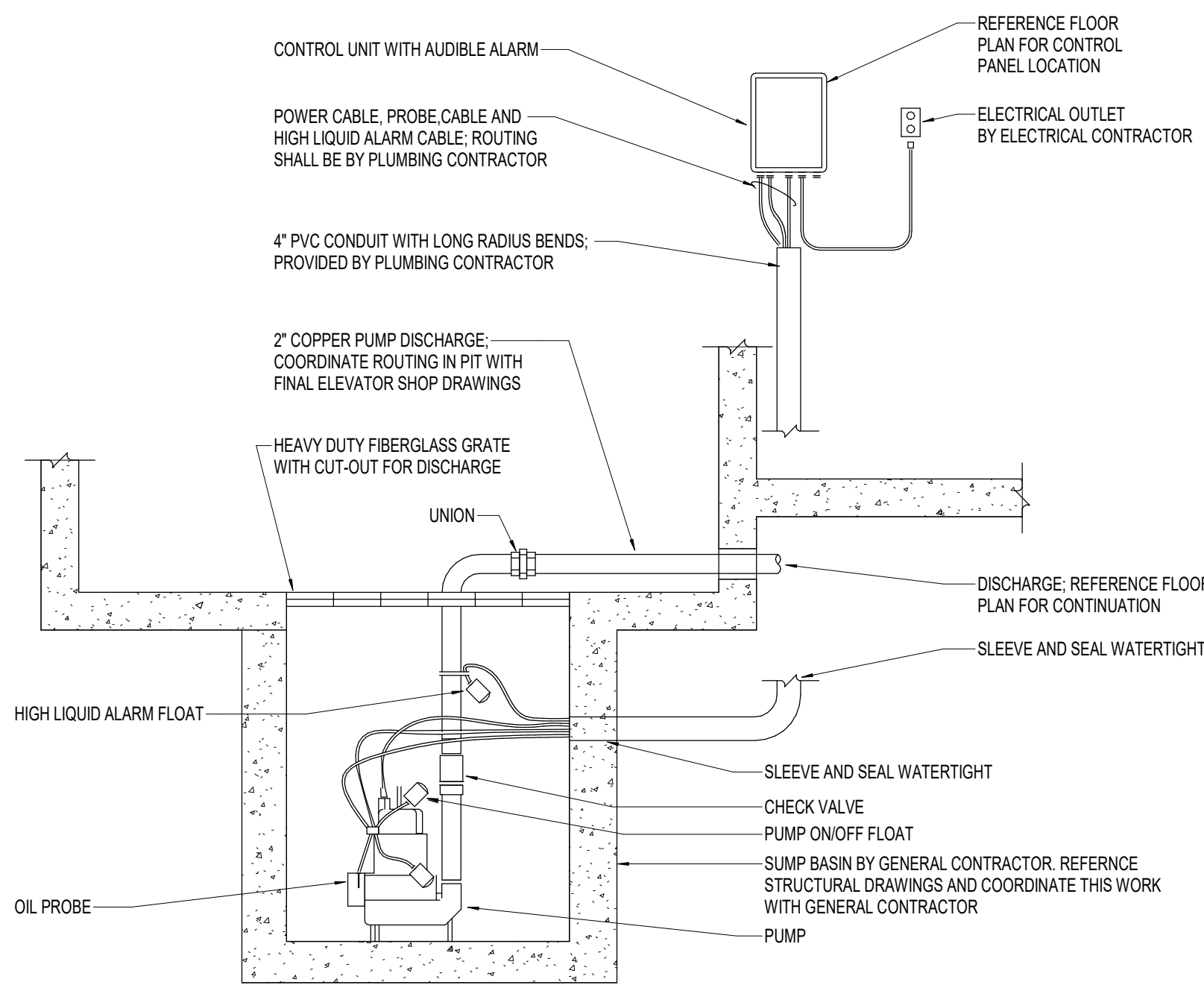
5 HWR CIRCUIT "SOLVER" PIPING DIAGRAM
P0.1 N.T.S.



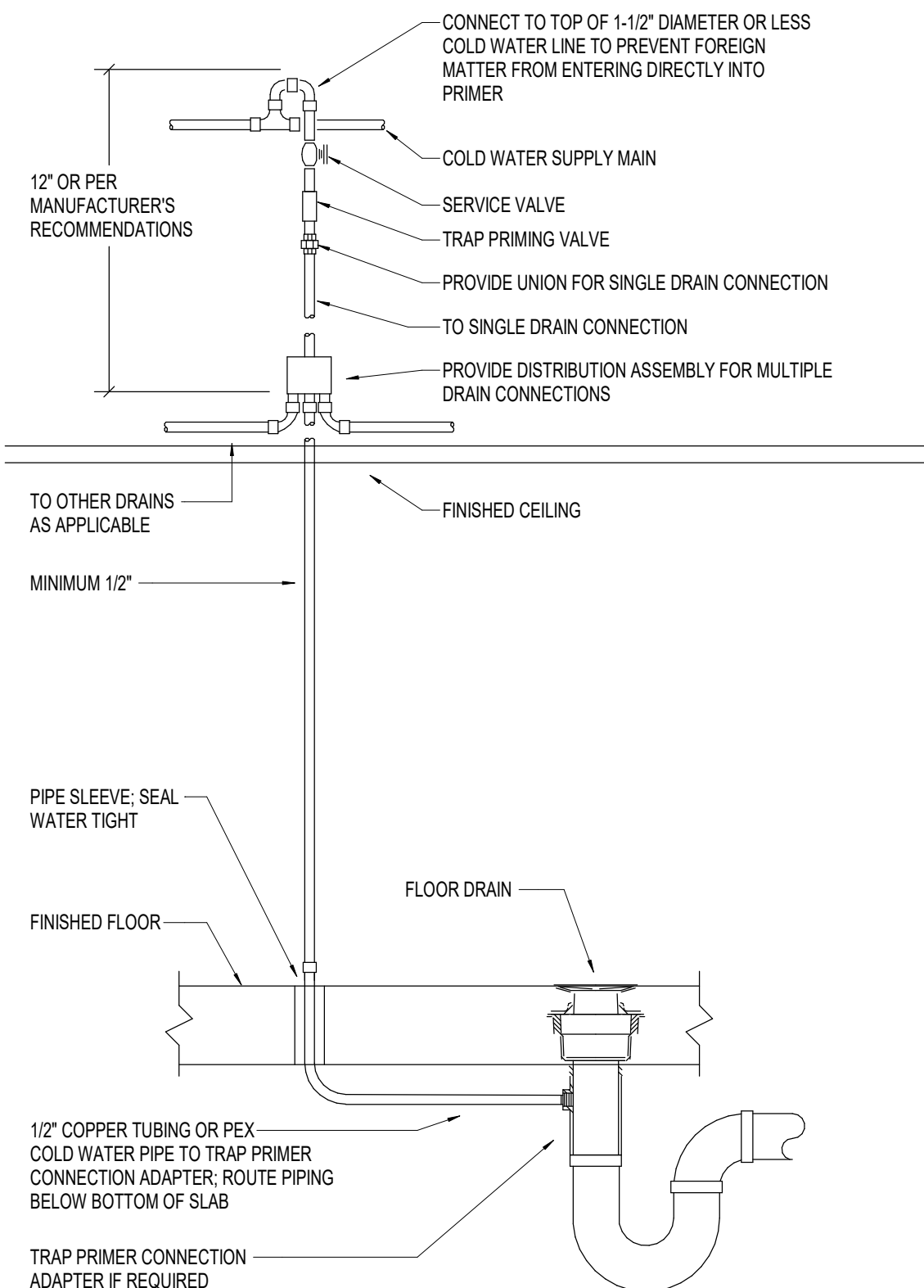
8 RESIDENT SHOWER WET WALL DETAIL
P0.1 N.T.S.



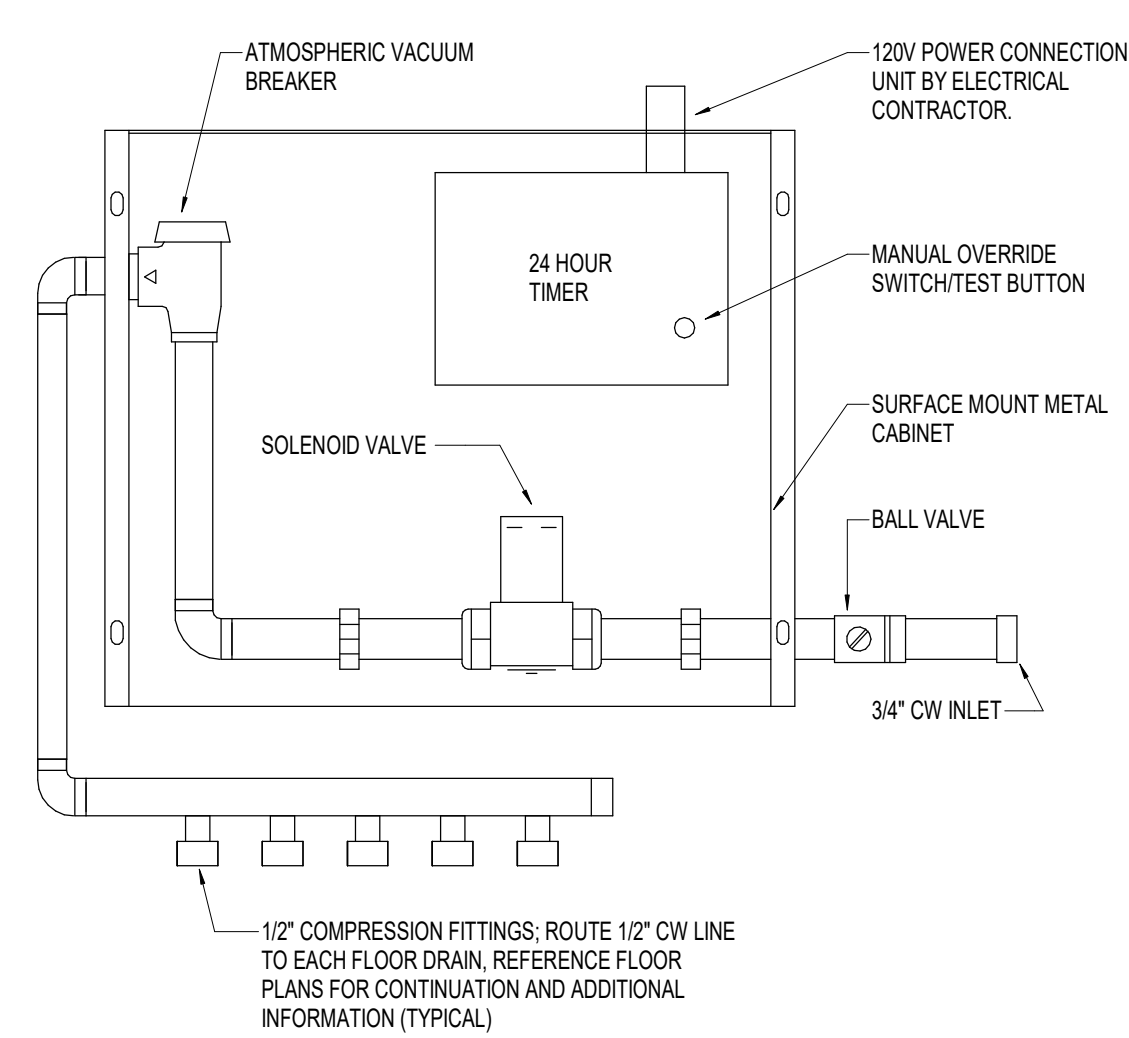
4 WASHER WALL BOX WITH WATER HAMMER ARRESTORS DETAIL
P0.1 N.T.S.



3 ELEVATOR SUMP PUMP DETAIL
P0.1 N.T.S.



2 DRAIN WITH TRAP PRIMER DETAIL
P0.1 N.T.S.



1 ELECTRONIC TRAP PRIMER ASSEMBLY DETAIL
P0.1 12" = 1'-0"

100% DESIGN DEVELOPMENT

NOT FOR CONSTRUCTION

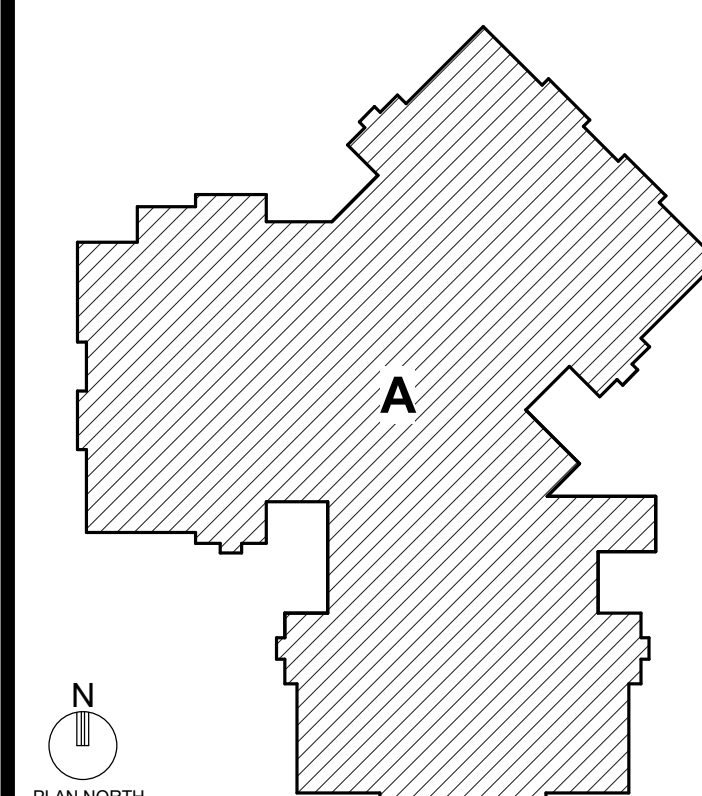
PROJECT TITLE
BRANDON OAKS
In the heart of it all
THE PINES EXPANSION

SFCS Architecture Engineering Planning Interiors
SFCS Inc. • 305 South Jefferson Street
Roanoke, Virginia 24011.2003
540.344.6664 • Fax 540.343.6925
www.sfcs.com

DESIGNER : KAD	DRAWN : DPWMAH
ARCHITECT : NSD	CHECKED : DPWMAH/AJM
ENGINEER : AJM	APPROVED : AJM
NO.	REVISION DESCRIPTION DATE

DRAWING TITLE
DETAILS - PLUMBING

DATE: APRIL 29, 2025	DRAWING
COMM. NO. 22119.00	P0.1



1. ALL PIPING INDICATED ON THIS SHEET IS TO BE ROUTED BELOW SLAB, UNLESS NOTED OTHERWISE. COORDINATE ROUTING OF PIPING BELOW SLAB WITH STRUCTURAL FOOTINGS TO AVOID CONFLICT WHERE POSSIBLE

NOT FOR CONSTRUCTION

DATE:	APRIL 29, 2025	DRAWING P1.0
COMM. NO.	22119.00	

DATE:	APRIL 29, 2025	DRAWING P1.0
COMM. NO.	22119.00	

P1.0

1/8" = 1'-0"

Copyright (c) 2024 SFCS Inc.
305 South Jefferson Street
Broomfield, Virginia 20015-2070

The information contained herein may vary from information shown on the Contract Drawings. Use of this information shall be in full compliance with the provisions of the Official Design/Construct License Agreement for its use. Any unauthorized use or duplication of the data contained herein shall constitute a violation of the license agreement as well as a violation of applicable law. If you are a contractor, you shall not use this information for the purpose of bidding or construction. If you are a consultant, you shall not use this information for the purpose of bidding or construction.

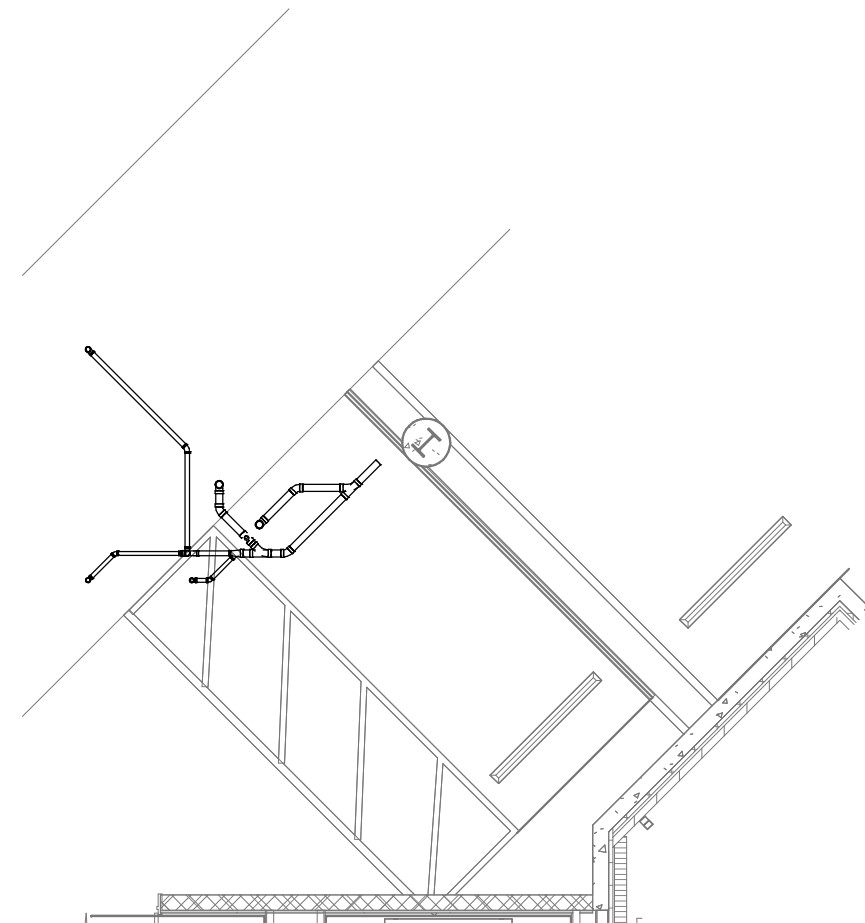
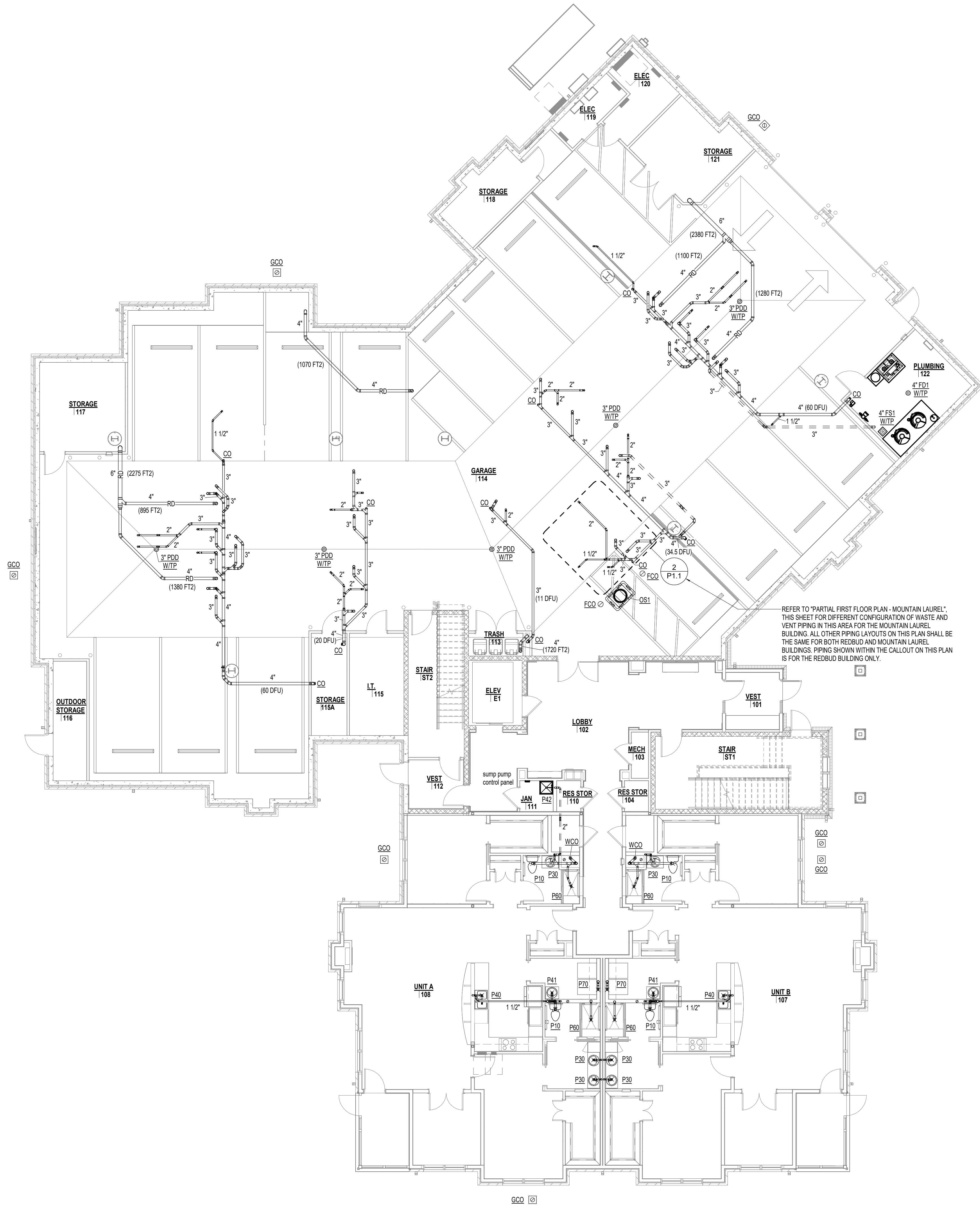
Autodesk Docs://22119.00 - Brandon Oaks/22119.00 - Brandon Oaks - The Pines Expansion - PLUMB Central.rvt

4/29/2025
6:51:50 AM

4/29/2025 6:51:54 AM Autodesk Docs//22119.00 - Brandon Oaks/22119.00 - Brandon Oaks - The Pines Expansion - PLUMB Central.rvt

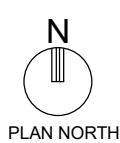
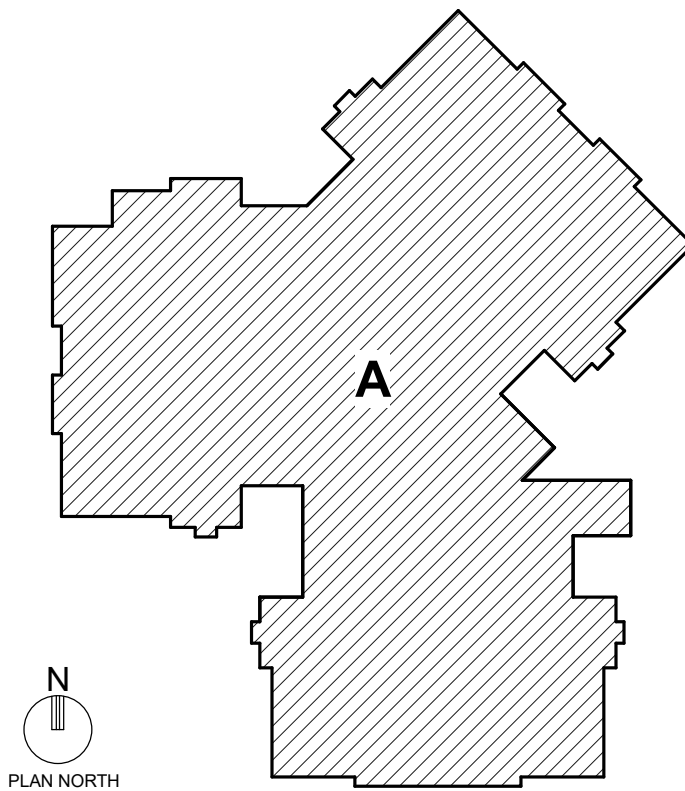
This information contained herein may vary from information shown on the Contract Drawings. Use of this information shall be in full compliance with the provisions of the Robert Copyright Notice. Any use of this information for any purpose other than that intended by the copyright owner is prohibited. All rights reserved. Copyright 2011-2025 Robert A. Jones, Inc. All rights reserved. Roanoke, Virginia 24011-2003

Copyright 2011-2025 SFCS Inc. All rights reserved. Roanoke, Virginia 24011-2003



**PARTIAL FIRST FLOOR PLAN -
MOUNTAIN LAUREL**
2
P1.1 1/8" = 1'-0"

FIRST FLOOR PLAN - WASTE, VENT AND STORM
1
P1.1 1/8" = 1'-0"



PLAN NOTES

**100% DESIGN
DEVELOPMENT**

NOT FOR CONSTRUCTION

PROJECT TITLE
**BRANDON
OAKS**
In the heart of it all
THE PINES EXPANSION

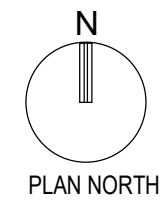
SFCS Architecture
Engineering
Planning
Interiors
SFCS Inc. • 305 South Jefferson Street
Roanoke, Virginia 24011.2003
540.344.6664 • Fax 540.343.6925
www.sfcs.com

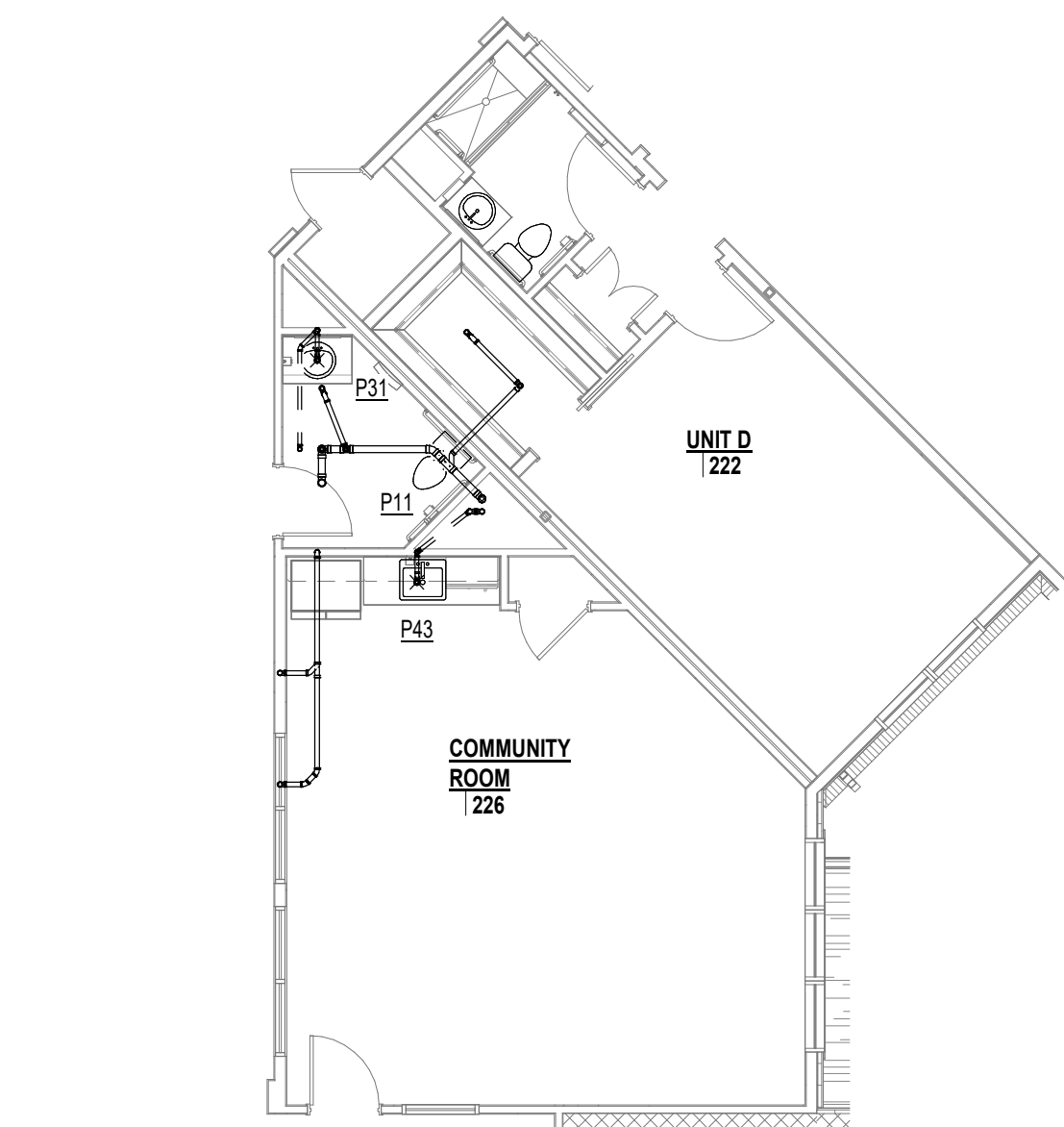
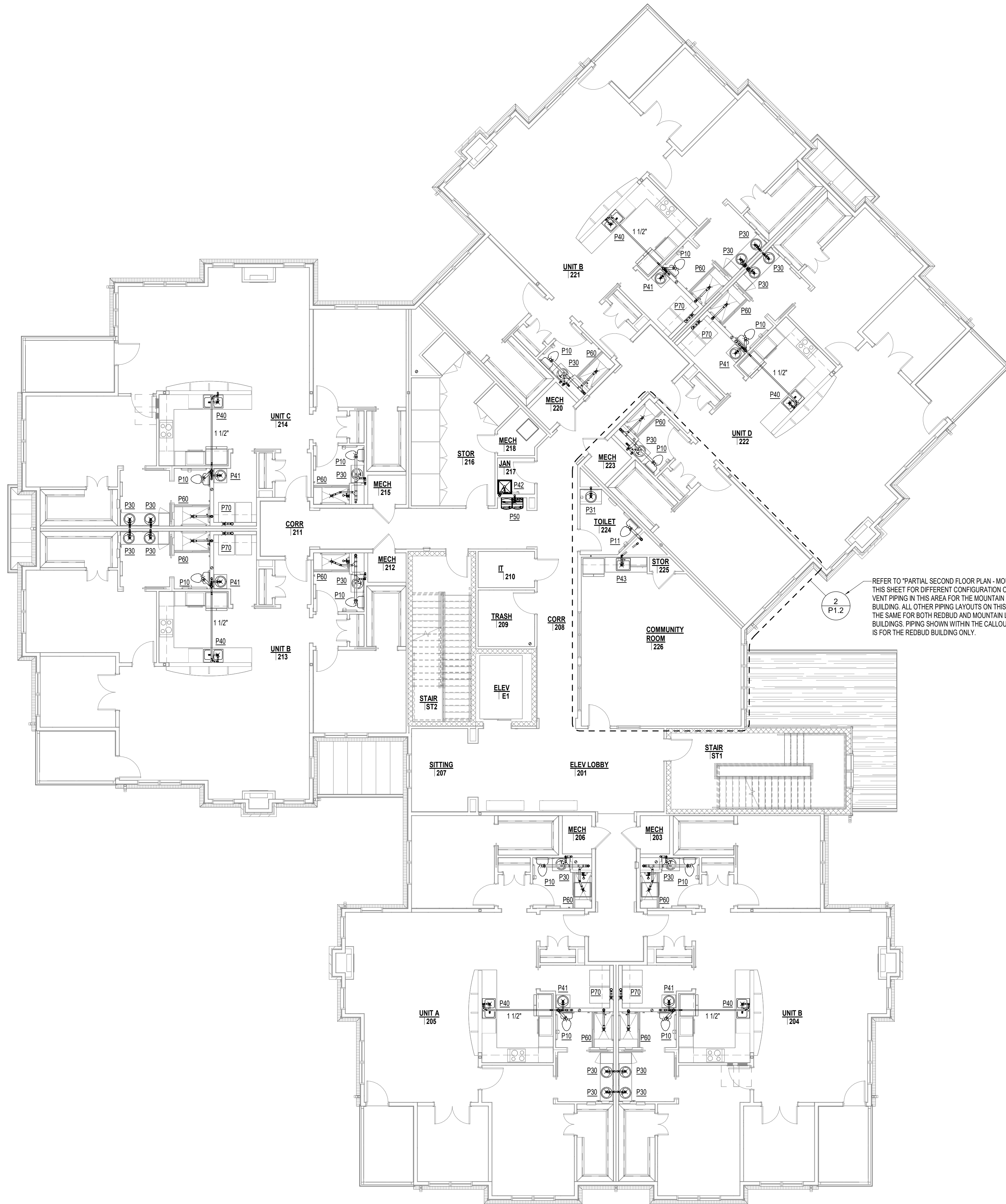
DESIGNER : KAD	DRAWN : DPW/MAH
ARCHITECT : NSD	CHECKED : DPW/MAH/AJM
ENGINEER : AJM	APPROVED : AJM

NO.	REVISION DESCRIPTION	DATE
-----	----------------------	------

DRAWING TITLE
**FIRST FLOOR PLAN -
WASTE, VENT AND STORM**

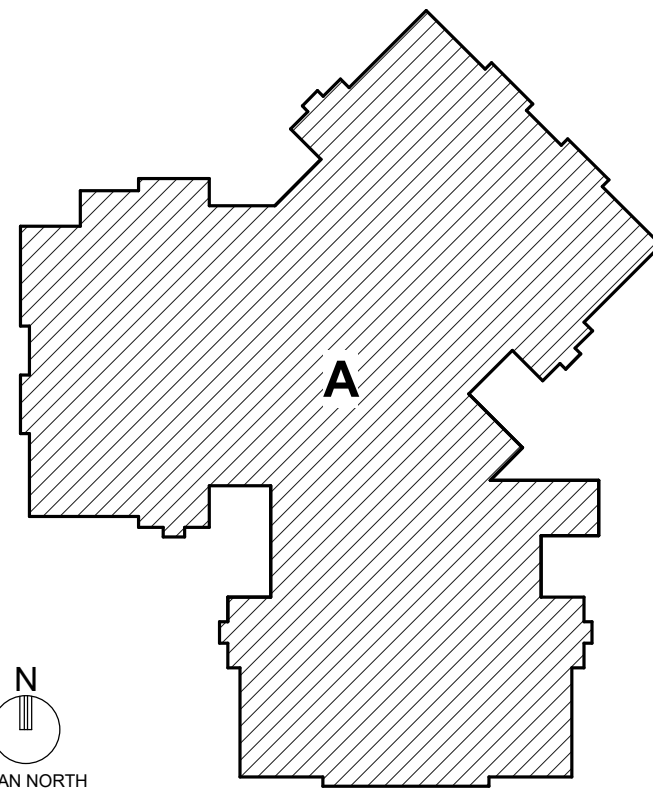
DATE: APRIL 29, 2025	DRAWING
COMM. NO. 22119.00	P1.1





PARTIAL SECOND FLOOR PLAN -
MOUNTAIN LAUREL

1/8" = 1'-0"



PLAN NOTES

100% DESIGN
DEVELOPMENT

NOT FOR CONSTRUCTION

PROJECT TITLE
**BRANDON
OAKS**
In the heart of it all
THE PINES EXPANSION

SFCs Architecture
Engineering
Planning
Interiors
SFCs Inc. • 305 South Jefferson Street
Roanoke, Virginia 24011.2003
540.344.6664 • Fax 540.343.6925
www.sfc.com

DESIGNER : KAD	DRAWN : DPW/MAH
ARCHITECT : NSD	CHECKED : DPW/MAH/AJM
ENGINEER : AJM	APPROVED : AJM

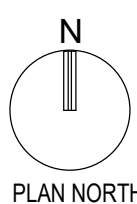
NO.	REVISION DESCRIPTION	DATE
-----	----------------------	------

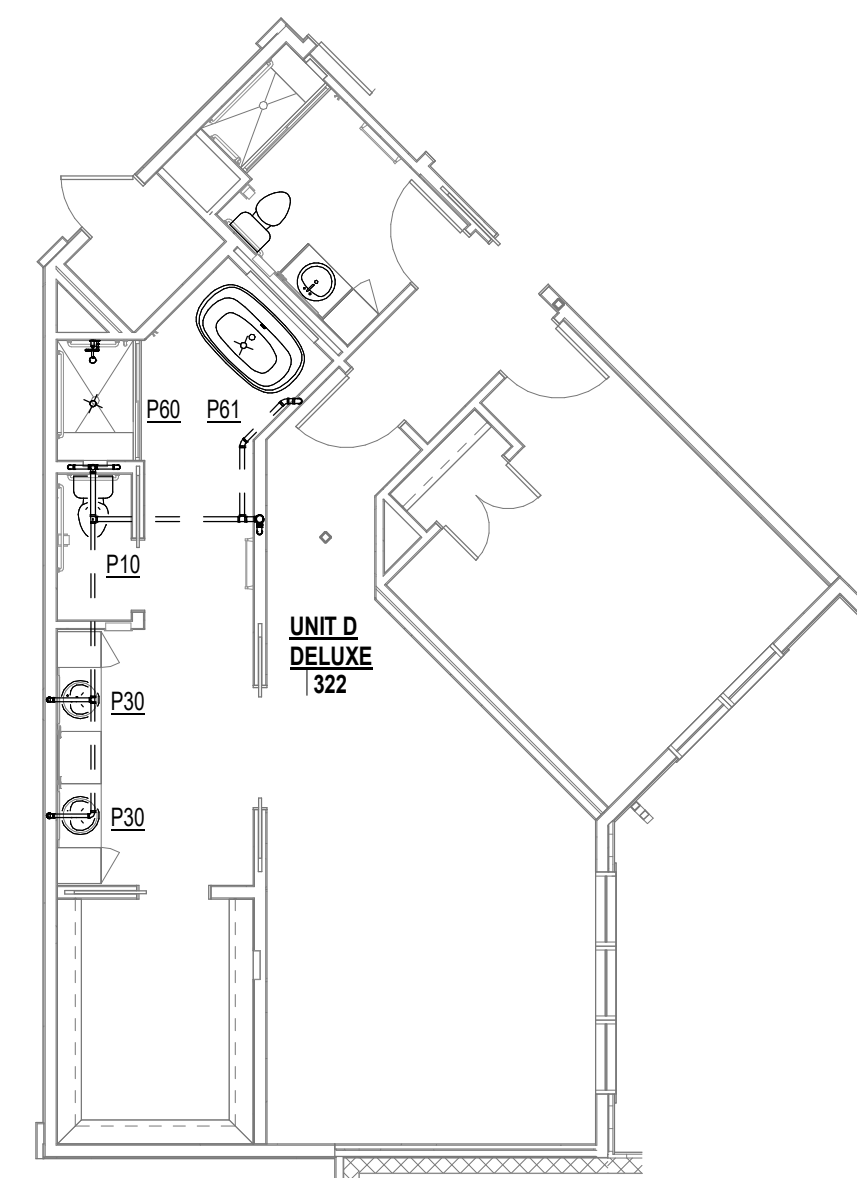
DRAWING TITLE
**SECOND FLOOR PLAN -
WASTE, VENT AND STORM**

DATE:	APRIL 29, 2025	DRAWING
COMM. NO.	22119.00	P1.2

SECOND FLOOR PLAN - WASTE, VENT AND STORM

1/8" = 1'-0"





2
P1.3

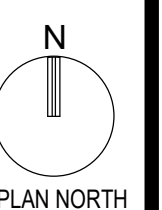
2
P1.3

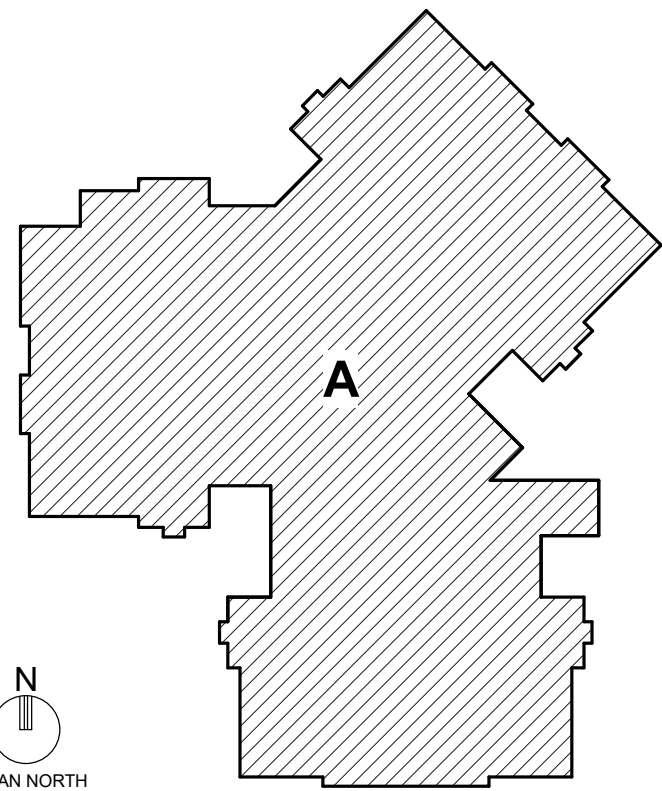
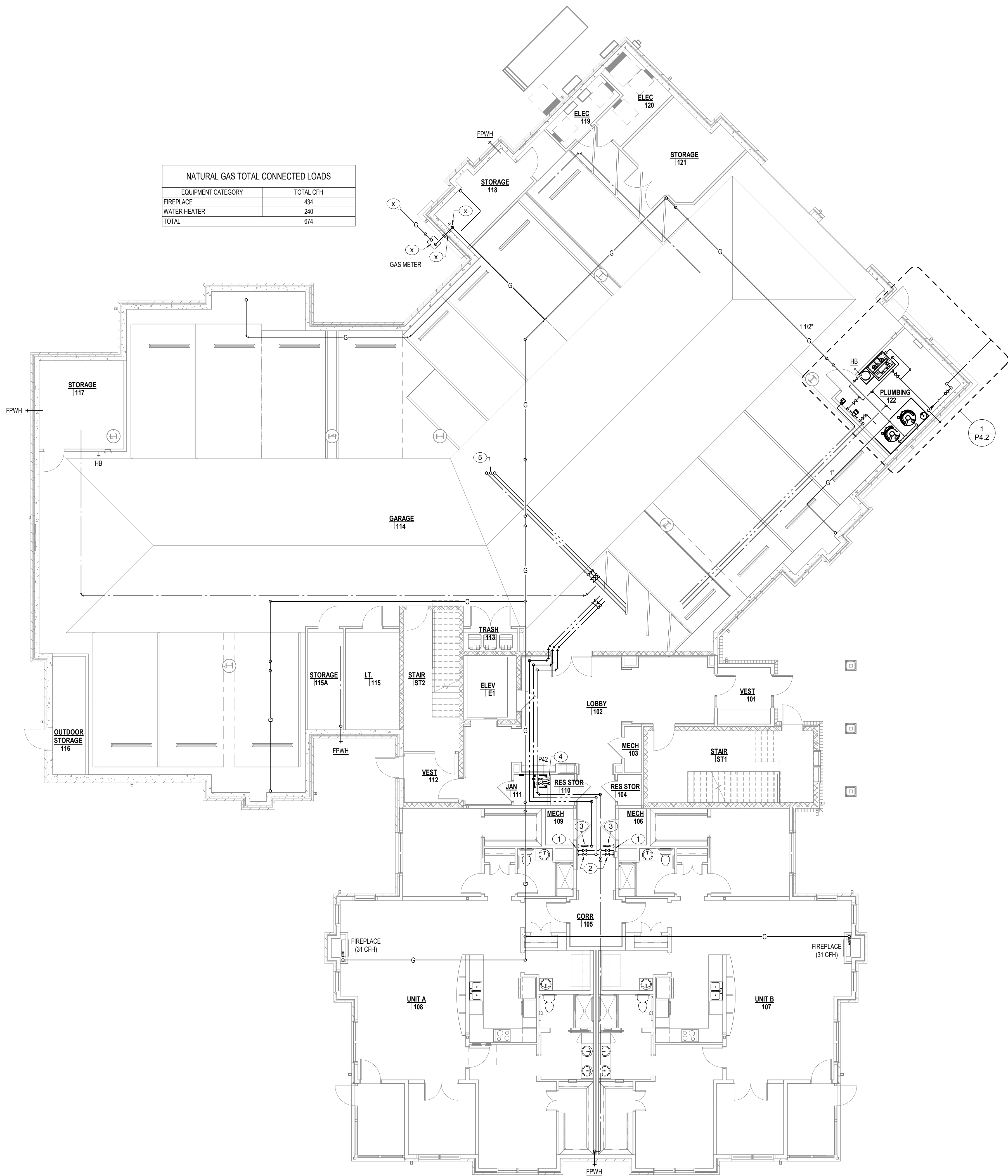
1
P1.3

LAN NOTES

NOT FOR CONSTRUCTION

DATE:	APRIL 29, 2025	DRAWING	P1.3
ITEM NO.	22119.00		





PLAN NOTES

- REFER TO TYPICAL ENLARGED UNIT PLAN FOR WATER PIPING SERVING UNIT ON THIS FLOOR.
- PROVIDE SHUT-OFF VALVES IN AN ACCESSIBLE LOCATION ABOVE LAY-IN CEILING.
- HOT WATER RETURN CIRCUIT SOLVER BALANCING VALVE. LOCATE ABOVE ACCESSIBLE LAY-IN CEILING. REFER TO DETAIL SHEET PXX FOR ADDITIONAL INFORMATION.
- 1/2" CW, HW LINES DOWN IN WALL TO FIXTURES AND CONNECT.
- 1/2" CW, HW LINES UP.
- 1/2" COLD WATER LINE OUT TO SITE 5'-0". REFER TO CIVIL ENGINEERS DRAWINGS FOR CONTINUATION. PLUMBING CONTRACTOR SHALL MAKE FINAL CONNECTION.
- 1/2" CW, HW LINES DOWN IN WALL TO FIXTURES AND CONNECT.
- INDICATES FLOW DIRECTION IN LINE (TYPICAL).
- 3/4" CW LINE DOWN TO WALL HYDRANT AND CONNECT.
- 1/2" GAS (11" WC) LINE UP.
- 1/2" GAS (2 PSI) LINE UP.
- GAS METER, METER LOOP, PIPING VALVES, BY-PASS, VENTS, REGULATORS AND ETC. AS REQUIRED BY LOCAL GAS COMPANY. PAINT ALL EXPOSED GAS PIPING AND ACCESSORIES WITH TWO COATS OF RUST INHIBITOR TYPE PAINT. COLOR TO BE DETERMINED BY GAS COMPANY.
- GAS SERVICE LINE OUT TO SITE 5'-0". REFER TO CIVIL ENGINEERS PLANS FOR CONTINUATION.
- 1/2" (2 PSI) GAS LINE UP ON WALL. PROVIDE MAIN GAS SHUT-OFF VALVE IN VERTICAL PIPING. PROVIDE SIGN STATING "MAIN GAS SHUT-OFF VALVE. DO NOT OPERATE".

100% DESIGN
DEVELOPMENT

NOT FOR CONSTRUCTION

PROJECT TITLE
**BRANDON
OAKS**
In the heart of it all
THE PINES EXPANSION

SFC
Architecture
Engineering
Planning
Interiors
SFC Inc. • 305 South Jefferson Street
Roanoke, Virginia 24011.2003
540.344.6664 • Fax 540.343.6925
www.sfc.com

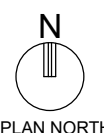
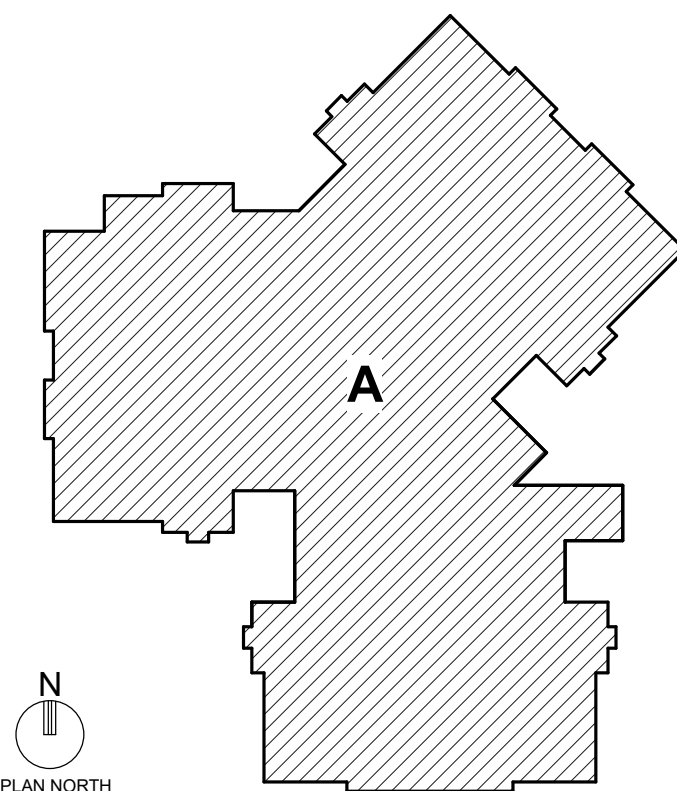
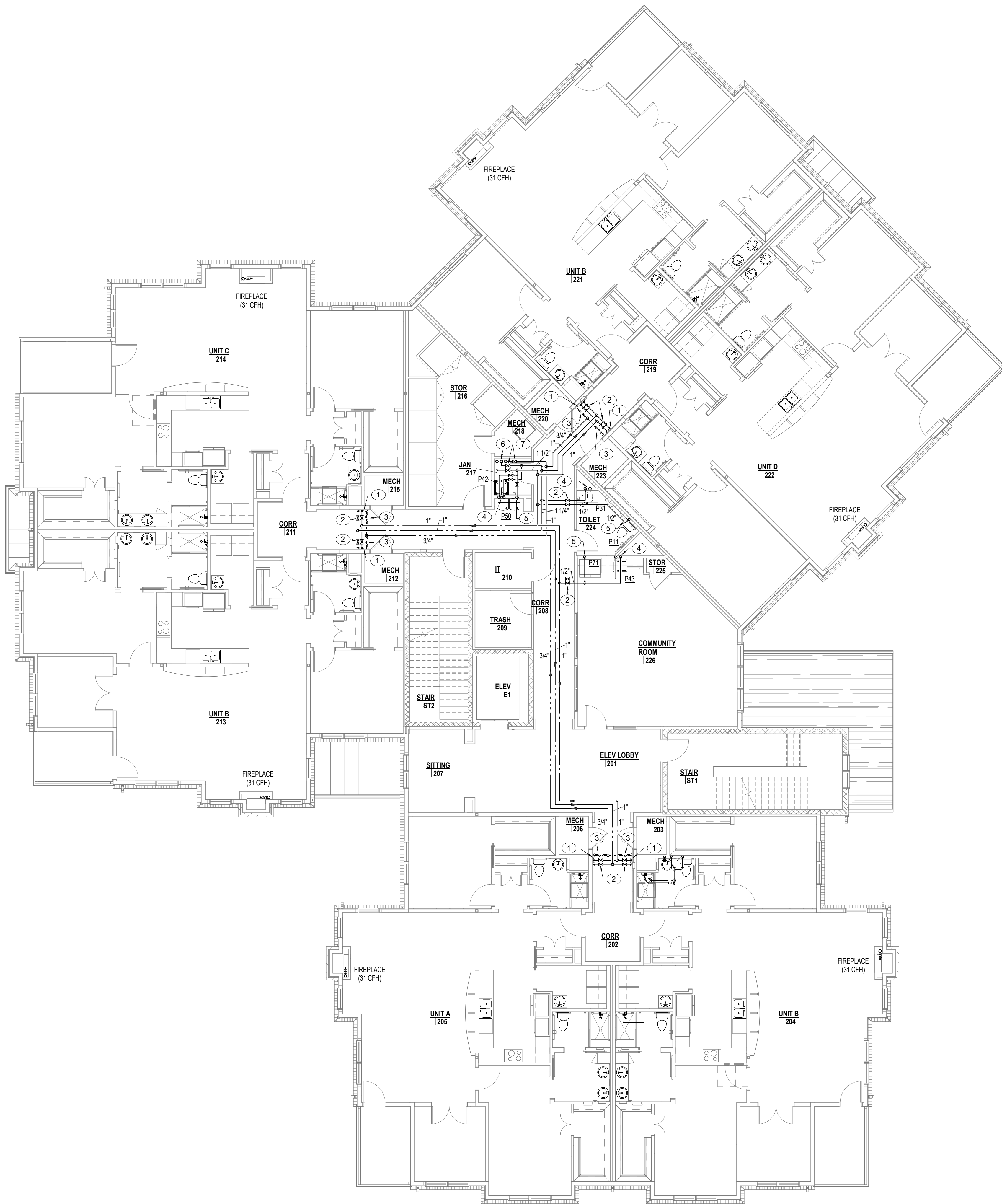
DESIGNER : KAD	DRAWN : DPW/MAH
ARCHITECT : NSD	CHECKED : DPW/MAH/AJM
ENGINEER : AJM	APPROVED : AJM

NO. REVISION DESCRIPTION DATE

DRAWING TITLE
**FIRST FLOOR PLAN -
WATER AND GAS**

DATE: APRIL 29, 2025
COMM. NO. 22119.00
DRAWING
P2.1

FIRST FLOOR PLAN - WATER AND GAS
1/8" = 1'-0"



PLAN NOTES

1. REFER TO TYPICAL ENLARGED UNIT PLAN FOR WATER PIPING SERVING UNIT ON THIS FLOOR.
2. PROVIDE SHUT-OFF VALVES IN AN ACCESSIBLE LOCATION ABOVE LAY-IN CEILING.
3. HOT WATER RETURN CIRCUIT SOLVER BALANCING VALVE. LOCATE ABOVE ACCESSIBLE LAY-IN CEILING. REFER TO DETAIL SHEET PXX FOR ADDITIONAL INFORMATION.
4. 1/2" CW, HW LINES DOWN IN WALL TO FIXTURES AND CONNECT.
5. 1/2" CW LINE DOWN IN WALL TO FIXTURE AND CONNECT.
6. X" CW, X" HW, X" HWR LINES UP FROM BELOW. PROVIDE TEE AND EXTEND X" CW, X" HW, X" HWR LINES TO THIS FLOOR. CONTINUE X" CW, X" HW, X" HWR LINES UP TO THIRD FLOOR.
7. PROVIDE SHUT-OFF VALVE ON CW, HW AND HWR LINES TO ISOLATE ENTIRE SECOND FLOOR PIPING. VALVES TO BE LOCATED IN AN ACCESSIBLE LOCATION BELOW CEILING.

100% DESIGN
DEVELOPMENT

NOT FOR CONSTRUCTION

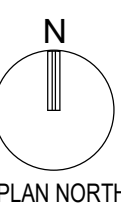
PROJECT TITLE
**BRANDON
OAKS**
In the heart of it all
THE PINES EXPANSION

SFCs Architecture
Engineering
Planning
Interiors
SFCs Inc. • 305 South Jefferson Street
Roanoke, Virginia 24011.2003
540.344.6664 • Fax 540.343.6925
www.sfc.com

DESIGNER : KAD	DRAWN : DPW/MAH
ARCHITECT : NSD	CHECKED : DPW/MAH/AJM
ENGINEER : AJM	APPROVED : AJM

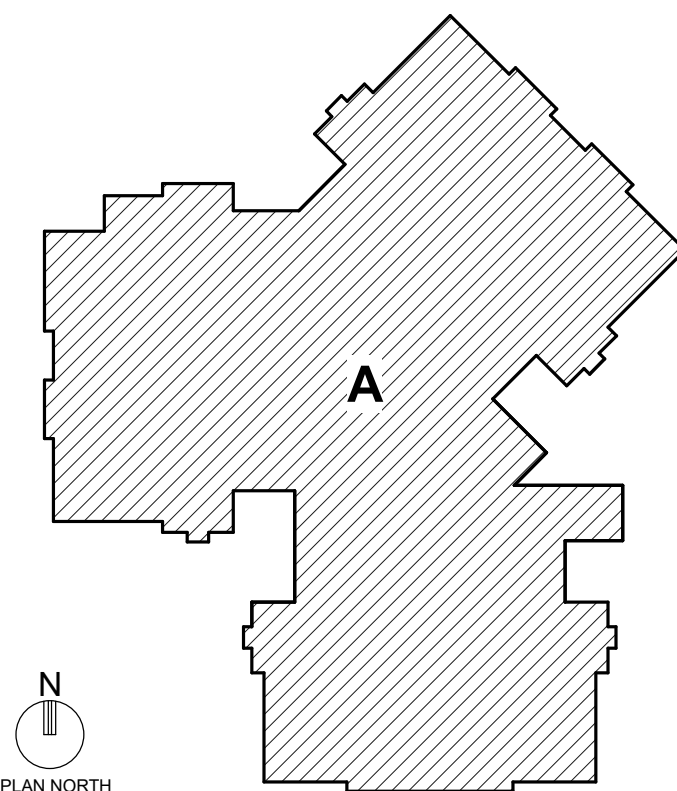
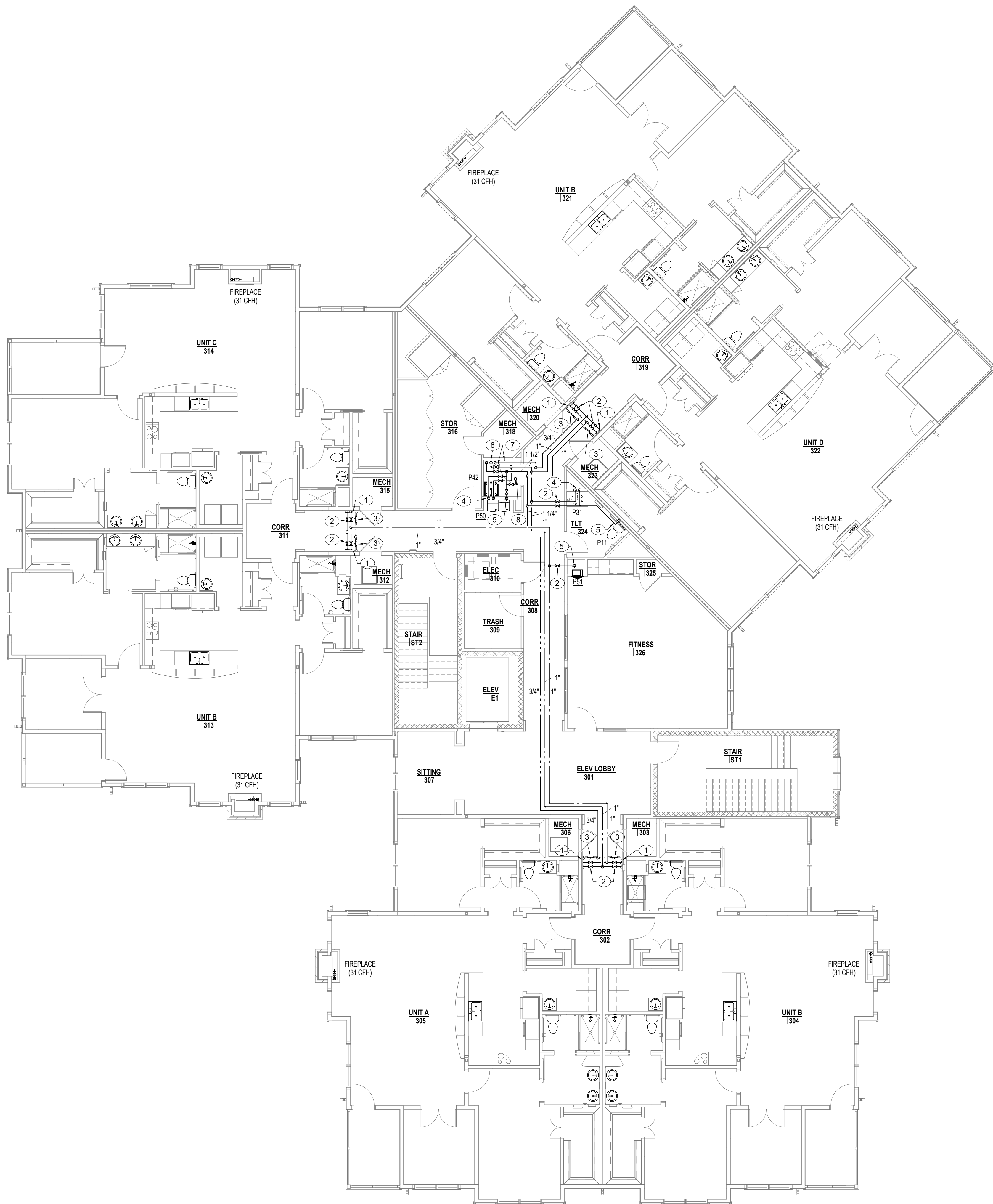
NO. REVISION DESCRIPTION DATE

DRAWING TITLE
**SECOND FLOOR PLAN -
WATER AND GAS**



DATE: APRIL 29, 2025	DRAWING
COMM. NO. 22119.00	P2.2

SECOND FLOOR PLAN - WATER AND GAS
1/8" = 1'-0"



PLAN NOTES

1. REFER TO TYPICAL ENLARGED UNIT PLAN FOR WATER PIPING SERVING UNIT ON THIS FLOOR.
2. PROVIDE SHUT-OFF VALVES IN AN ACCESSIBLE LOCATION ABOVE LAY-IN CEILING.
3. HOT WATER RETURN CIRCUIT SOLVER BALANCING VALVE. LOCATE ABOVE ACCESSIBLE LAY-IN CEILING. REFER TO DETAIL SHEET PXX FOR ADDITIONAL INFORMATION.
4. 1/2" CW, HW LINES DOWN IN WALL TO FIXTURES AND CONNECT.
5. 1/2" CW LINE DOWN IN WALL TO FIXTURE AND CONNECT.
6. X" CW, X" HW, X" HWR LINES DOWN.
7. PROVIDE SHUT-OFF VALVE ON CW, HW AND HWR LINES TO ISOLATE ENTIRE THIRD FLOOR PIPING. VALVES TO BE LOCATED IN AN ACCESSIBLE LOCATION BELOW CEILING.
8. 3/4" CW LINE UP TO ROOF HYDRANT.

100% DESIGN
DEVELOPMENT

NOT FOR CONSTRUCTION

PROJECT TITLE
**BRANDON
OAKS**
In the heart of it all
THE PINES EXPANSION

SFCs Architecture
Engineering
Planning
Interiors
SFCs Inc. • 305 South Jefferson Street
Roanoke, Virginia 24011.2003
540.344.6664 • Fax 540.343.6925
www.sfc.com

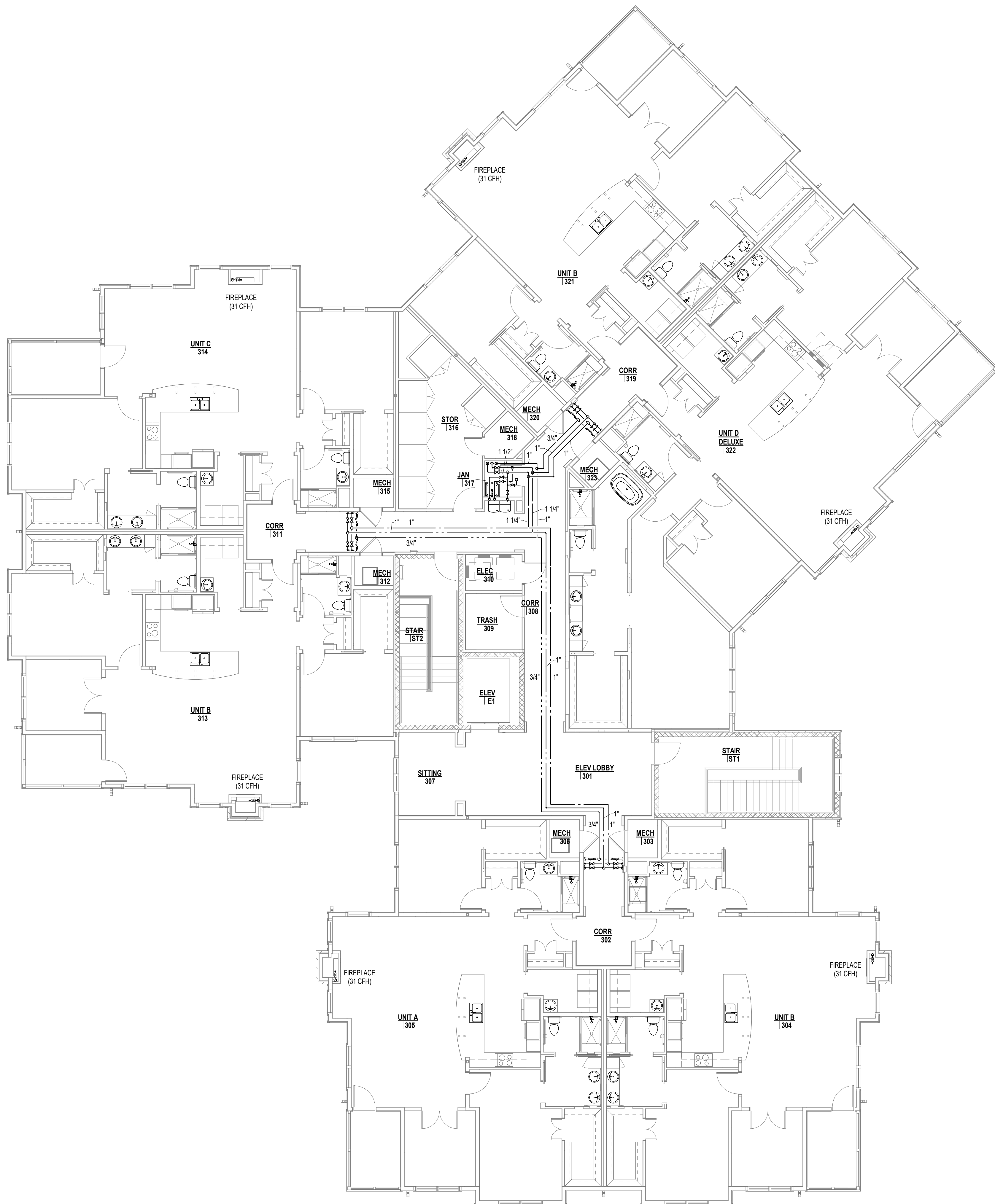
DESIGNER : KAD	DRAWN : DPW/MAH
ARCHITECT : NSD	CHECKED : DPW/MAH/AJM
ENGINEER : AJM	APPROVED : AJM

NO. REVISION DESCRIPTION DATE

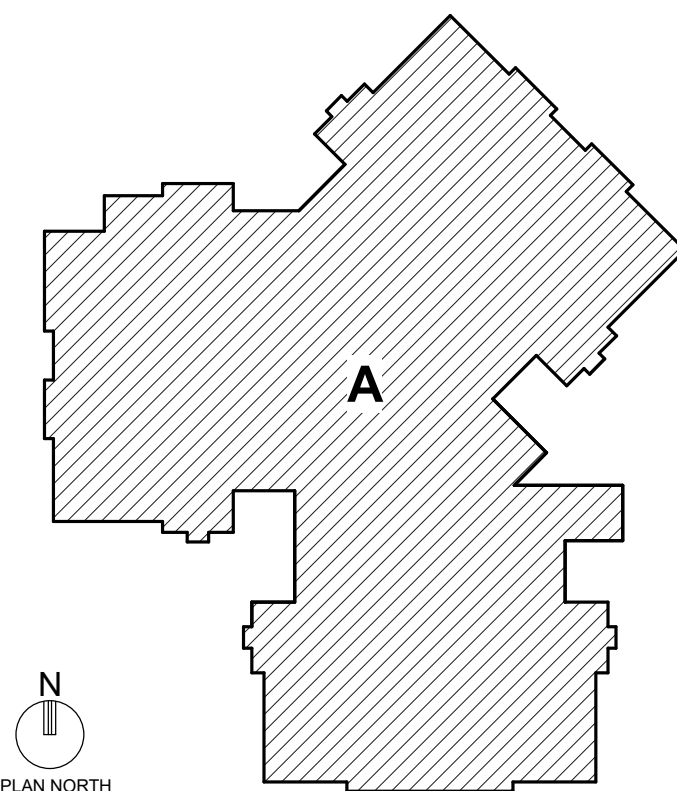
DRAWING TITLE
**THIRD FLOOR PLAN -
WATER AND GAS -
REDBUD**

DATE: APRIL 29, 2025
COMM. NO. 22119.00
DRAWING
P2.3

THIRD FLOOR PLAN - WATER AND GAS - REDBUD
1/8" = 1'-0"



1
P2.4
THIRD FLOOR PLAN - WATER AND GAS - MOUNTAIN LAUREL
1/8" = 1'-0"



PLAN NOTES

100% DESIGN
DEVELOPMENT

NOT FOR CONSTRUCTION

PROJECT TITLE
**BRANDON
OAKS**
In the heart of it all
THE PINES EXPANSION

SFCs Architecture
Engineering
Planning
Interiors
SFCs Inc. • 305 South Jefferson Street
Roanoke, Virginia 24011.2003
540.344.6664 • Fax 540.343.6925
www.sfcsc.com

DESIGNER : KAD	DRAWN : DPW/MAH
ARCHITECT : NSD	CHECKED : DPW/MAH/AJM
ENGINEER : AJM	APPROVED : AJM

NO.	REVISION DESCRIPTION	DATE
-----	----------------------	------

DRAWING TITLE
**THIRD FLOOR PLAN -
WATER AND GAS -
MOUNTAIN LAUREL**

DATE:	APRIL 29, 2025
COMM. NO.	22119.00

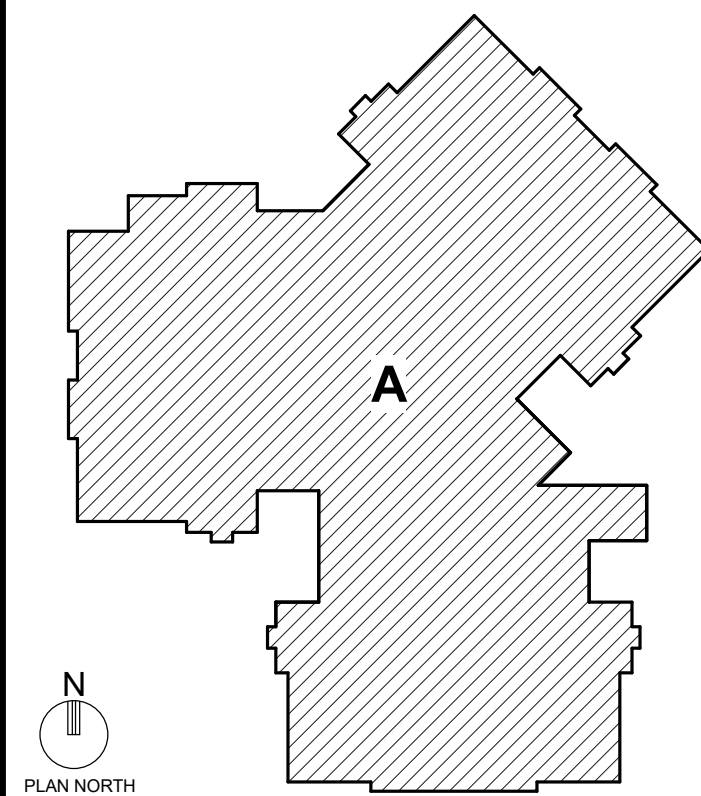
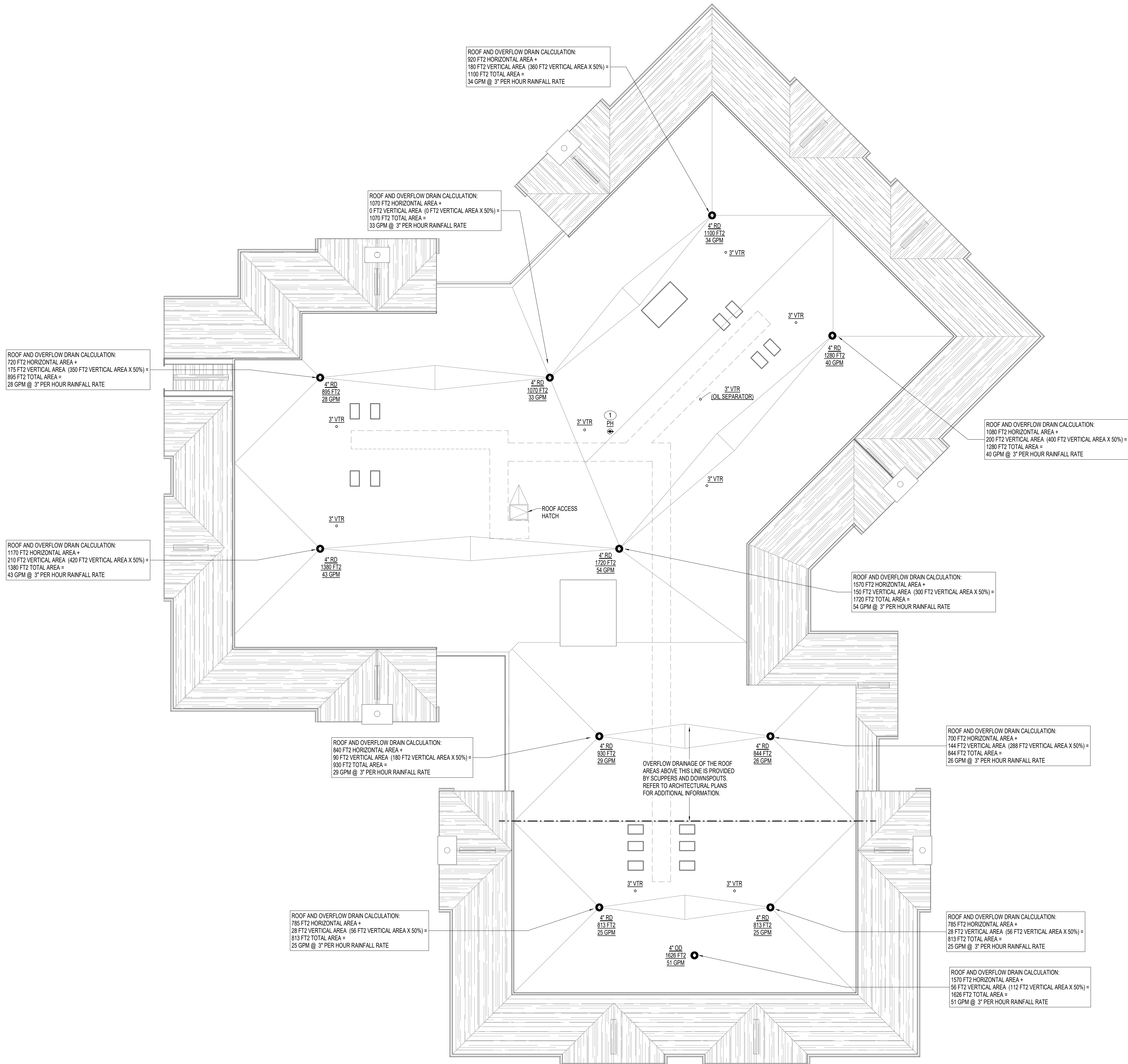
DRAWING

P2.4

4/29/2025 6:52:15 AM Autodesk Docs//22119.00 - Brandon Oaks/22119.00 - Brandon Oaks - The Pines Expansion - PLUMB Central.rvt

Copyright © 2025 SFCs Inc. All rights reserved. This drawing is the property of SFCs Inc. and is not to be reproduced, stored in a retrieval system, or transmitted in any form or by any means, electronic, mechanical, photocopying, recording, or by any information storage and retrieval system, without the prior written permission of SFCs Inc.

1 ROOF/ATTIC PLAN - PLUMBING
1/8" = 1'-0"



- PLAN NOTES
- 3/4" CW LINE UP TO ROOF POST HYDRANT. REFER TO PLUMBING FIXTURE SCHEDULE, SHEET P3.1.9 AND "ROOF POST HYDRANT DETAIL", SHEET P3.1.1 FOR ADDITIONAL INFORMATION.

100% DESIGN
DEVELOPMENT

NOT FOR CONSTRUCTION

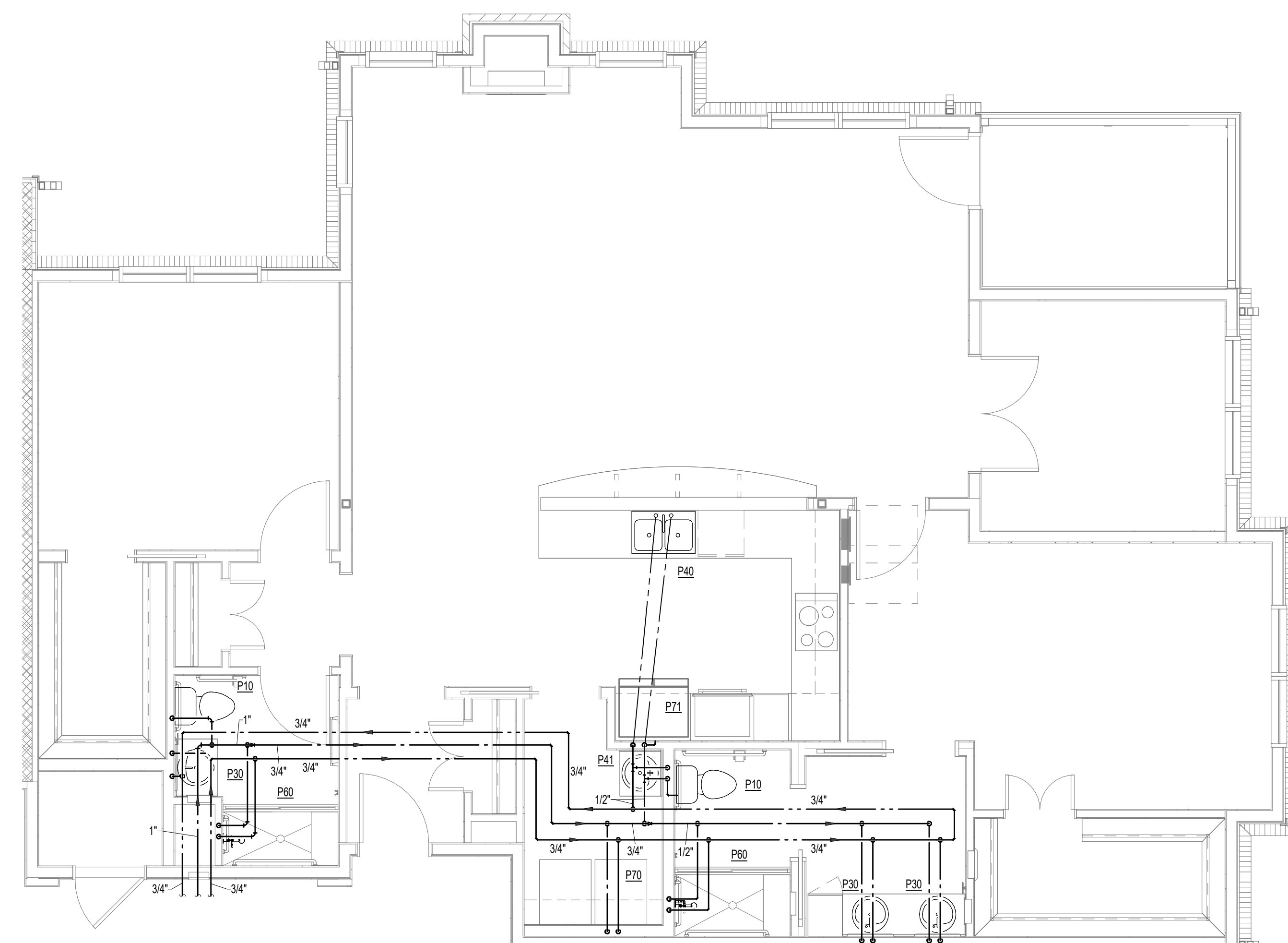
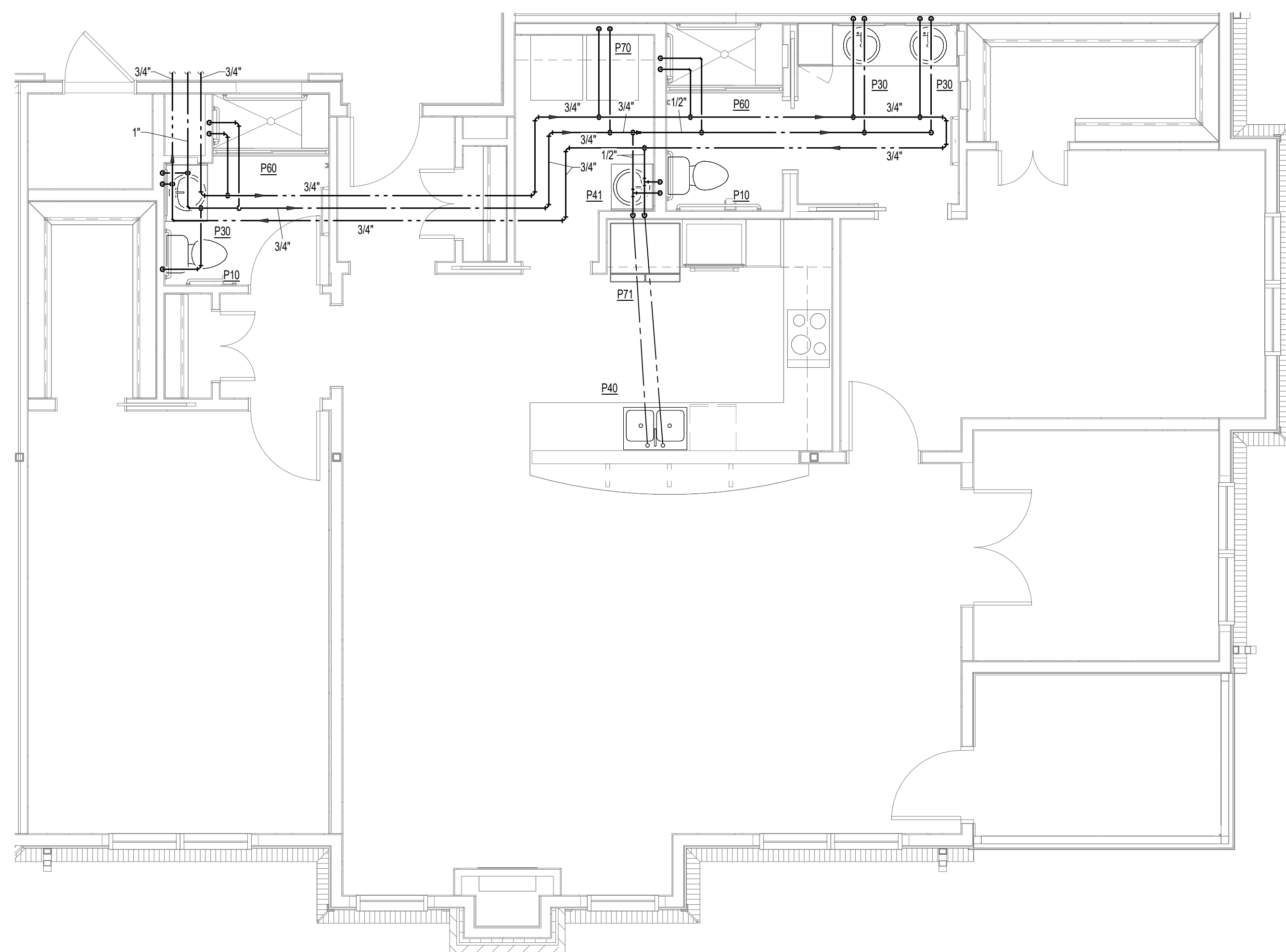
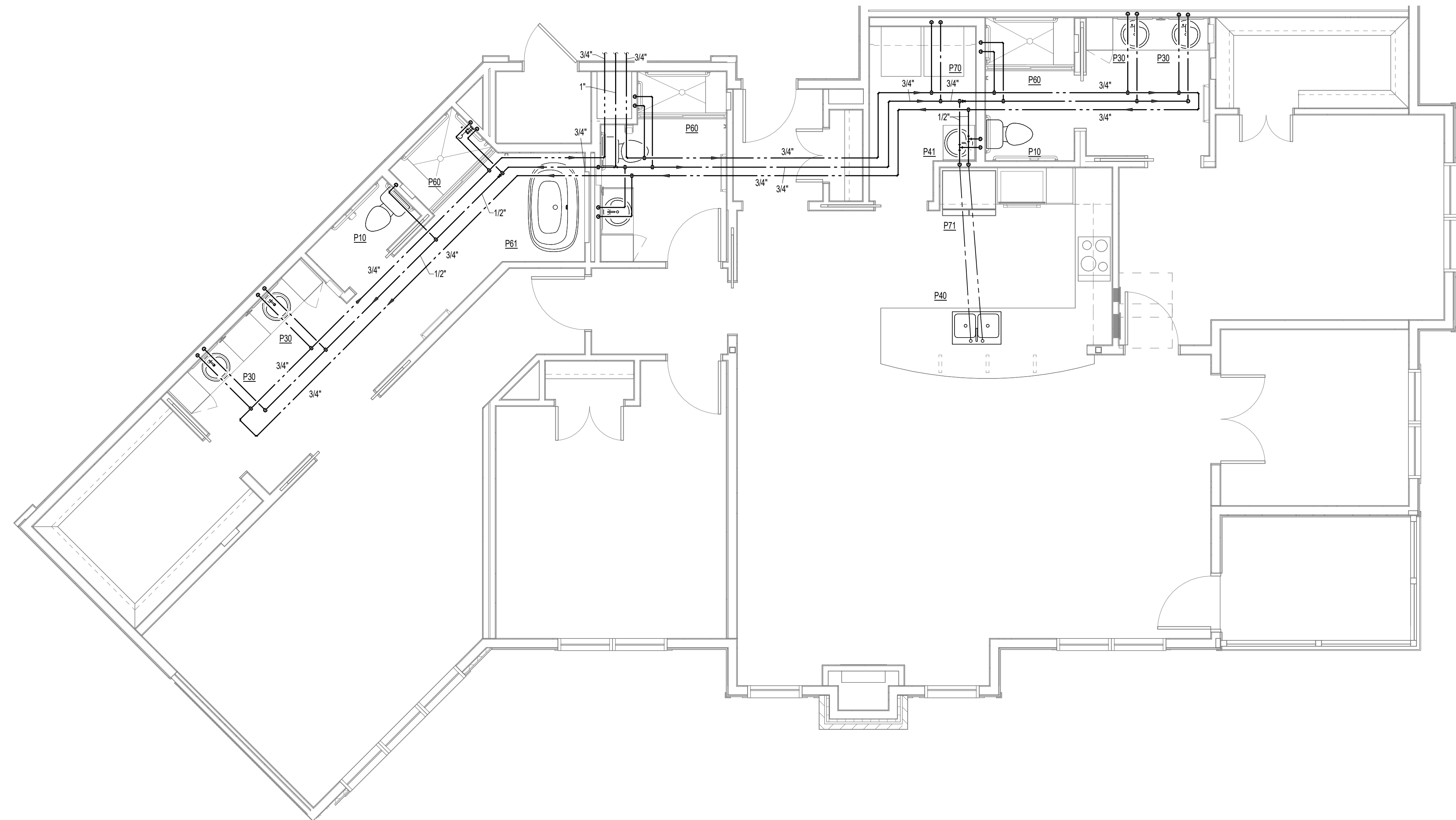
PROJECT TITLE
BRANDON OAKS
In the heart of it all
THE PINES EXPANSION

SFCs Architecture
Engineering
Planning
Interiors
SFCs Inc. • 305 South Jefferson Street
Roanoke, Virginia 24011.2003
540.344.6664 • Fax 540.343.6925
www.sfcscorp.com

DESIGNER : KAD	DRAWN : DPW/MAH
ARCHITECT : NSD	CHECKED : DPW/MAH/AJM
ENGINEER : AJM	APPROVED : AJM
NO.	REVISION DESCRIPTION

DRAWING TITLE
ROOF PLAN - PLUMBING

DATE: APRIL 29, 2025
COMM. NO. 22119.00
DRAWING
P3.1



GENERAL NOTES

PLAN NOTES ○

100% DESIGN
DEVELOPMENT

PROJECT TITLE _____

BRANDON
 **OAKS**
In the heart of it all
THE PINES EXPANSION

SFCS | Architecture
Engineering
Planning
Interiors

SFCS Inc. ■ 305 South Jefferson Street
Roanoke, Virginia 24011.2003
540.344.6664 ■ Fax 540.343.6925
www.sfcs.com

ESIGNER : KAD	DRAWN : DPW/MAH	
ARCHITECT : NSD	CHECKED : DPW/MAH/AJM	
ENGINEER : AJM	APPROVED : AJM	
NO.	REVISION DESCRIPTION	DATE

RAWING TITLE
ENLARGED PLANS -
WATER

DATE:	APRIL 29, 2025	DRAWING P4.1
COMM. NO.	22119.00	



2 IN-LINE CIRCULATION PUMP DETAIL
P4.2 N.T.S.



DATE:	APRIL 29, 2025	DRAWING	P4.2
COMM. NO.	22119.00		