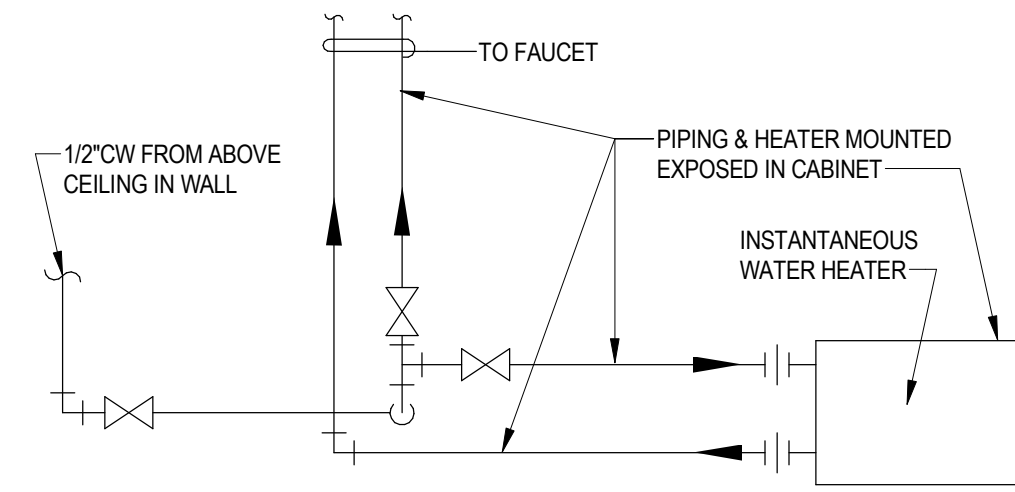


FIXTURE CONNECTION SCHEDULE										
MARK	FIXTURE	WASTE	VENT	COLD	HOT	MANUFACTURER	MODEL	CATALOG NO.	REMARKS	MTG HGT
WC-1	WATER CLOSET (FLUSH VALVE)	4"	2"	1"	-	SLOAN	ROYAL OPTIMA WETS	2050.1301-1.28-ES-S	WALL MOUNTED, TOP SPUD, ELONGATED FRONT, 1.28 GPF. PROVIDE AMERICAN STANDARD CARDOFF WHITE SOLID PLASTIC CLOSED FRONT SEAT WITH COVER, SLOAN ROYAL OPTIMA 111 ESS SENSOR FLUSH VALVE, EL-485A ELECTRICAL BOX AND SUPPORT KIT AND CLOSET CARRIER SIMILAR TO JOSAM 12000 SERIES "CHASE SAVER".	14" TO RIM
WC-2	WATER CLOSET (FLUSH VALVE)	4"	2"	1"	-	SLOAN	ROYAL OPTIMA WETS	2050.1301-1.28-ES-S	WALL MOUNTED, HANDICAPPED, ELONGATED FRONT, 1.28 GPF. PROVIDE AMERICAN STANDARD CARDOFF WHITE SOLID PLASTIC CLOSED FRONT SEAT WITH COVER, SLOAN OPTIMA 111 ESS SENSOR FLUSH VALVE, EL-485A ELECTRICAL BOX AND SUPPORT KIT AND CLOSET CARRIER SIMILAR TO JOSAM 12000 SERIES "CHASE SAVER".	17" TO RIM
UR-1	URINAL	2"	1 1/2"	1 1/4"	-	SLOAN	ROYAL OPTIMA WEUS	WEUS-1000.1301-0.13-ES-S	WALL MOUNTED, HANDICAPPED, 0.13 GPF WATER SAVING. PROVIDE SLOAN ROYAL 186 ES-S SENSOR FLUSH VALVE AND URINAL CARRIER SIMILAR TO JOSAM SERIES 17950-UR.	17" TO RIM
L-1	LAVATORY	1 1/4"	1 1/2"	1/2"	1/2"	AMERICAN STANDARD	LUCERNE	0355.012	WALL MOUNTED, HANDICAPPED, VITREOUS CHINA. PROVIDE SLOAN OPTIMA EBF-650-BDM SENSOR FAUCET, 0.50 GPM, AND CONCEALED ARMS CARRIER SIMILAR TO JOSAM 17100 SINGLE.	34" TO RIM
EWC-1	ELECTRIC WATER COOLER	1 1/4"	1 1/2"	1/2"	-	ELKAY	---	EZWS-ERPBM28K	WALL MOUNTED, HANDICAPPED, BOTTLE-FILLER, VANDAL-RESISTANT FLEXIBLE GUARD BUBBLERS. PROVIDE WALL MOUNTING FRAME MF200 WITH STAINLESS STEEL BOLTS AND SCREWS, CHILLER SHELF AND SUPPORT RODS.	36" TO LOWER SPOUT OUTLET
SK-1	SINK (SINGLE COMPARTMENT)	1 1/2"	1 1/2"	1/2"	1/2"	ELKAY	LUSTERTONE	LRAD 2219	HANDICAPPED, CHICAGO 110-GN8AE35-369AB FAUCET.	COUNTER TOP
SK-2	SINK (DOUBLE COMPARTMENT)	1 1/2"	1 1/2"	1/2"	1/2"	ELKAY	LUSTERTONE	LRAD 3322	HANDICAPPED, CHICAGO 110-GN8AE35-369AB FAUCET.	COUNTER TOP

INSTALLATION SHALL MEET 2010 AMERICANS WITH DISABILITIES ACT (ADA) ACCESSIBILITY GUIDELINES FOR BUILDINGS AND FACILITIES.

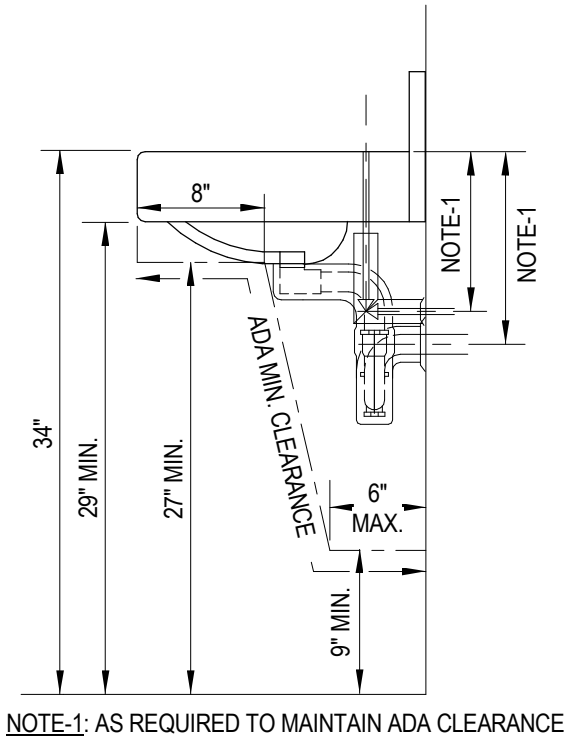
PLUMBING LEGEND

ABOVE	ABV	
BACK FLOW PREVENTER	BFP	
BELOW	BEL	
CLEANOUT	CO	
IN VERTICAL OR FLUSH WITH FLOOR		
DIRECTION OF FLOW		
DIRECTION OF SLOPE DOWN		
DOMESTIC COLD WATER PIPE, NEW	CW	
DOMESTIC HOT WATER PIPE, NEW	HW	
DN	DN	
ELECTRIC WATER COOLER	EWC	
EXISTING	EX	
FLOOR	FL	
FLOOR DRAIN	FD	
FROM	FR	
GATE VALVE	GV	
BALL VALVE	BV	
GATE VALVE (IN VERTICAL)		
INLET WITH P-TRAP		
LAVATORY	L	
PIPING INDICATION WITH RESPECT TO WATER FLOW		
BOTTOM TAKEOFF		
SIDE CONNECTION		
CONNECTION (BOTTOM TEE OR TOP)		
TOP TAKEOFF		
TURN UP OR FROM BELOW		
TURN UP OR DOWN		
TURN UP OR FROM ABOVE		
PUMPED WASTE	PW	
SANITARY WASTE PIPE, NEW	SW	
SHOCK ABSORBER	SA	
SINK	SK	
SPRINKLER PIPE	SPR	
URINAL	UR	
VENT PIPE, NEW	V	
VENT THRU ROOF	VTR	
WALL HYDRANT	WH	
WASTE PIPE	W	
WATER CLOSET	WC	
WATER HEATER	WHR	



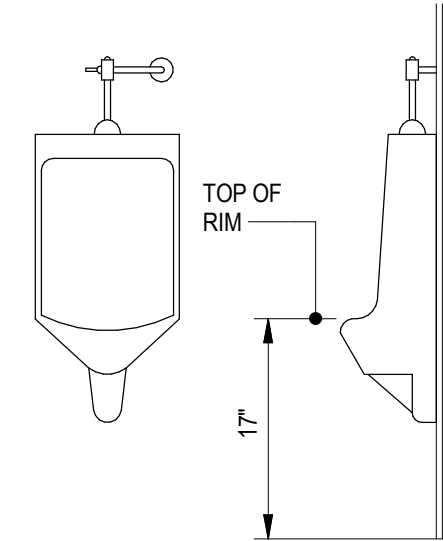
WATER SUPPLY BELOW COUNTERTOP UNDER SK DETAIL

NO SCALE



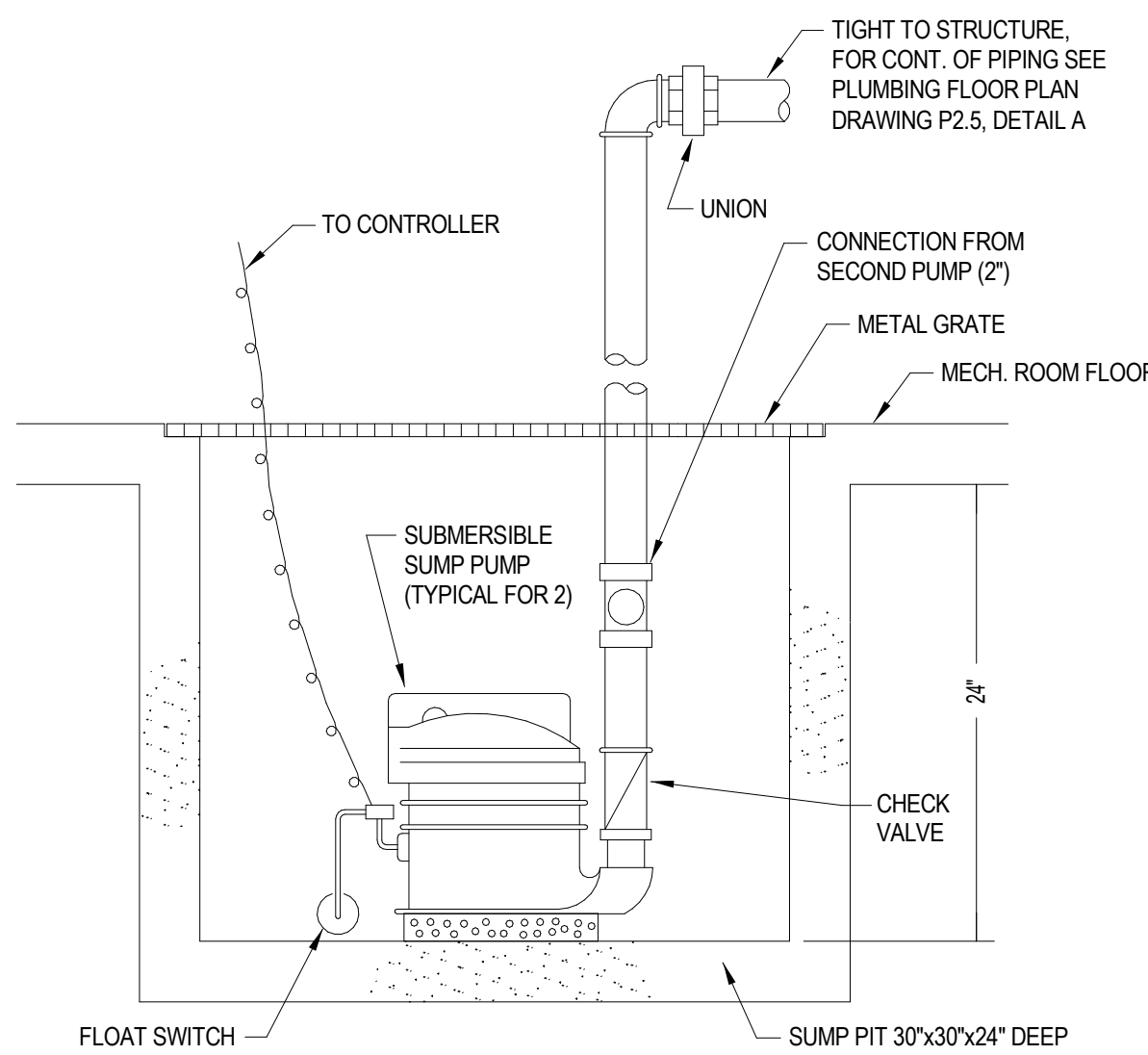
HANDICAPPED LAVATORY INSTALLATION ADA REQUIREMENTS WALL MOUNTED

NO SCALE



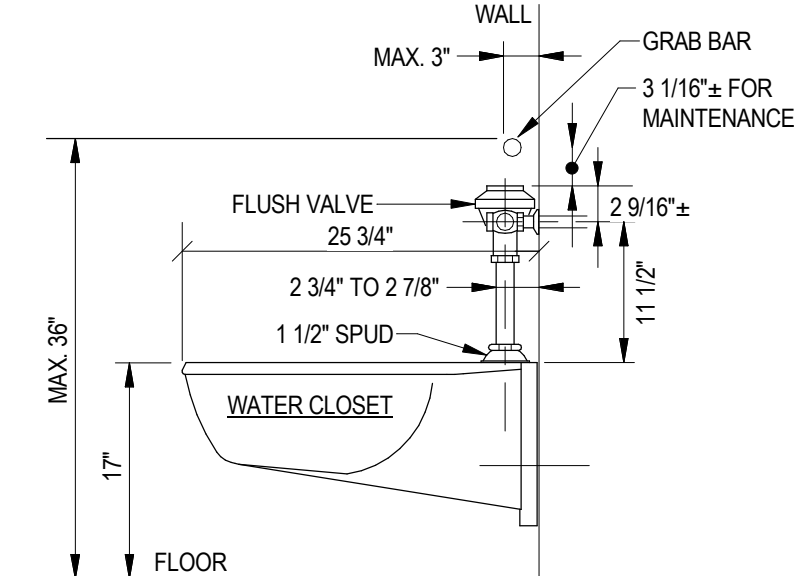
HANDICAPP URINAL INSTALLATION ADA REQUIREMENTS WALL MOUNTED

NO SCALE



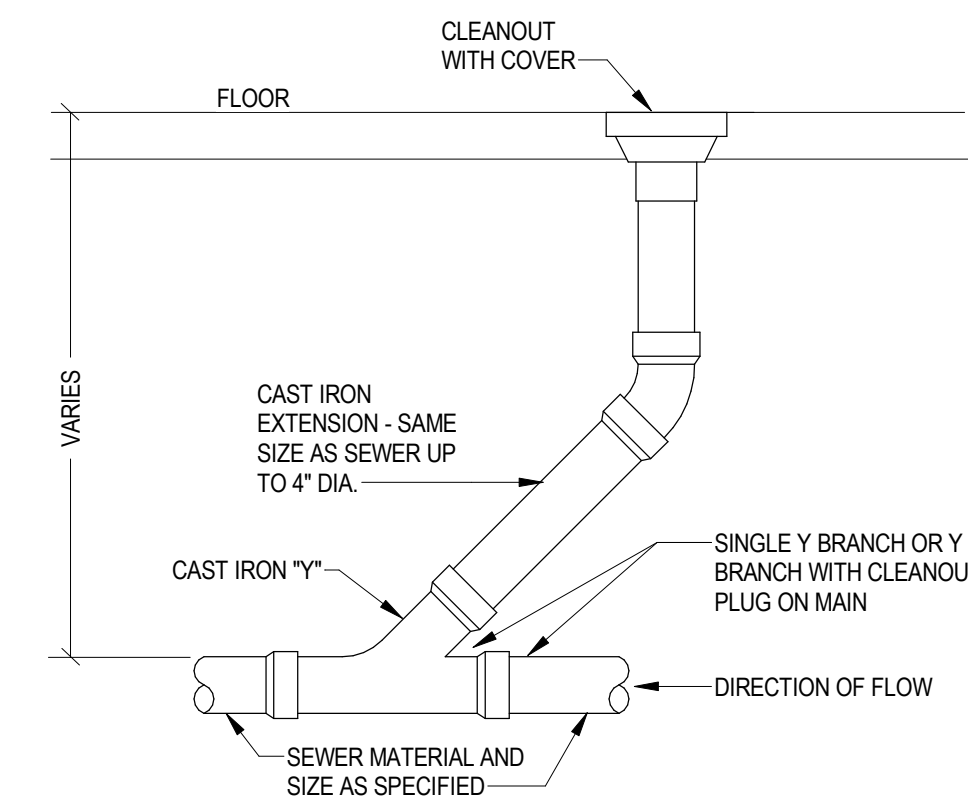
SUMP PUMP DETAIL

NO SCALE



HANDICAPPED WC ROUGH-IN DETAIL

NO SCALE



CLEANOUT DETAIL

NO SCALE

SPRINKLER SYSTEM GENERAL NOTES

- THE ENTIRE ADDITION SHALL BE FULLY SPRINKLERED WITH A HYDRAULICALLY CALCULATED WET SPRINKLER SYSTEM. THE ELEVATOR AND ELEVATOR MACHINE ROOM SHALL BE PROTECTED BY 200 DEG. F. SPRINKLERS. SYSTEM SHALL EXTEND FROM AND CONNECT TO THE EXISTING SPRINKLER SERVICE IN THE EXISTING MECHANICAL ROOM. ALL SYSTEMS SHALL COMPLY WITH NFPA 13-2016 AND THE 2021 VIRGINIA CONSTRUCTION CODE. REFER TO SPECIFICATION SECTION 211000 FOR DETAILED SPRINKLER SYSTEM REQUIREMENTS.
- CONTRACTOR SHALL COORDINATE THE LOCATIONS OF ALL SPRINKLERS AND SPRINKLER PIPING WITH OTHER NEW AND EXISTING PIPES, DUCTS, LIGHTS, EQUIPMENT, CONDUIT, STRUCTURAL SYSTEMS, CEILING SUPPORTS, AND FRAMING BEFORE INSTALLATION. SPRINKLER PIPING SHALL NOT BE INSTALLED WHERE ITS LOCATION INHIBITS EQUIPMENT FILTERS AND MAINTENANCE ACCESS OR INFRINGES UPON CLEARANCE DICTATED BY THE NATIONAL ELECTRIC CODE. ALL SPRINKLERS TO BE CENTERED IN CEILING TILES - "CENTER OF TILE".
- PROVIDE U.L. APPROVED FIRESTOPPING AT ALL LOCATIONS WHERE PIPES PENETRATE RATED WALL AND RATED FLOOR/CEILING ASSEMBLIES IN ACCORDANCE WITH SPECIFICATION SECTION 22 00 00, PARAGRAPH 2.04A AND VBC SECTION 712.
- CAREFULLY COORDINATE LOCATIONS OF SPRINKLERS WITH SURFACE MOUNTED LIGHT FIXTURES. MAINTAIN OBSTRUCTION DISTANCES AND SPACING IN ACCORDANCE WITH THE MANUFACTURERS LISTINGS AND NFPA REQUIREMENTS. SIDEWALL SPRINKLERS SHALL BE INSTALLED WITH DEFLECTORS MINIMUM 5 INCHES BELOW CEILINGS, BUT NO HIGHER THAN THE BOTTOM OF LIGHT FIXTURES.
- WATER SUPPLY INFORMATION PROVIDED BY TOWN OF BEDFORD WATER DEPARTMENT BASED ON A FLOW TEST DATED MARCH 14, 2025. CONTRACTOR SHALL PERFORM ADDITIONAL FLOW TESTS AS REQUIRED TO VERIFY DATA FOR USE IN DESIGN CALCULATIONS.

STATIC PRESSURE: 94 PSI

RESIDUAL PRESSURE: 24 PSI

FLOW: 817 GPM

SEE SITE PLAN FOR LOCATIONS OF TEST HYDRANTS.

PLUMBING GENERAL NOTES:

- SEE SITE PLAN SHEET FOR THE EXTENT OF ALL PIPING LEAVING AND ENTERING BUILDING.
- MAKE PIPING CONNECTIONS AS REQUIRED TO ALL FIXTURES AND EQUIPMENT EVEN THOUGH ALL BRANCH MAINS, ELBOWS AND CONNECTIONS ARE NOT SHOWN.
- CHECK WITH ARCHITECTURAL WORKING DRAWINGS BEFORE ROUGHING-IN PLUMBING FIXTURES.
- SLOPES AND INVERT ELEVATIONS OF SEWERS, MANHOLES, ETC. SHALL BE ESTABLISHED AND VERIFIED BY CONTRACTOR BEFORE ANY PIPING IS INSTALLED IN ORDER THAT PROPER SLOPES WILL BE MAINTAINED AND NECESSARY INVERT ELEVATIONS OBTAINED.
- ALL PIPES SHALL BE COORDINATED WITH OTHER NEW AND EXISTING DUCTS, PIPES, LIGHTS, STRUCTURAL SYSTEM, CEILING SUPPORTS AND FRAMING BEFORE INSTALLATION. MINOR PIPE OFFSETS SHALL BE PROVIDED AS REQUIRED. MEASUREMENTS FOR VERTICAL CLEARANCES SHALL BE TAKEN AT THE JOB SITE BEFORE INSTALLATION OF ANY PIPING.
- WASTE PIPE BELOW FLOOR, VENT PIPING ABOVE CEILING, PIPING OFFSET FOR CLARITY.
- DOMESTIC WATER PIPING SHALL BE INSTALLED ABOVE CEILINGS UNLESS NOTED OTHERWISE. DOMESTIC WATER PIPING SHOWN IN PIPE CHASE WALLS SHALL BE INSTALLED IN CHASE SPACE, PIPING OFFSET FOR CLARITY.
- DOMESTIC WATER PIPING SHALL NOT BE INSTALLED IN LOCATIONS SUBJECT TO FREEZING OR SPACES EXTERIOR TO BUILDING INSULATION.
- ALL EQUIPMENT SHALL BE INSTALLED IN ACCORDANCE WITH MANUFACTURER'S PUBLISHED INSTRUCTIONS.
- MATERIALS AND INSTALLATION SHALL COMPLY WITH LOCAL CODES. APPLICABLE PROVISIONS OF LATEST EDITION OF NATIONAL FIRE PROTECTION ASSOCIATION, LOCAL UTILITY REGULATIONS AND GOVERNMENTAL DEPARTMENTS HAVING JURISDICTION.
- WHERE PIPE CONNECTIONS ARE SHOWN CONNECTING TO EXISTING, CONTRACTOR SHALL DETERMINE EXACT LOCATIONS AND CONNECTION SIZES PRIOR TO INSTALLATION.
- LIMITS OF CONTRACT. DOMESTIC WATER SERVICE, SANITARY AND STORM WATER PIPING SHALL BE EXTENDED UNDER THIS SECTION OF THE SPECIFICATIONS TO POINTS 9'-0" BEYOND THE BUILDING LINES, UNLESS OTHERWISE INDICATED ON THE DRAWINGS, WHERE THE PIPES SHALL BE CAPPED OR PLUGGED AND LEFT READY FOR CONNECTION AND EXTENSION BY OTHERS, AND THE LOCATIONS MARKED WITH A STAKE OR OTHER APPROVED MEANS.
- MODIFY FLUSH VALVE ON INDICATED HANDICAPPED WATER CLOSETS SO THAT OPERATOR IS ON RIGHT SIDE OF VALVE WHEN FACING THE PLUMBING FIXTURE. DOMESTIC COLD WATER SUPPLY RUNOUT SHALL BE LOCATED TO ACCOMMODATE THE MODIFICATION. SEE DRAWINGS FOR WATER CLOSETS TO BE MODIFIED.
- RETURN AIR PLENUM NOTE: ALL MATERIALS LOCATED IN THE RETURN AIR PLENUMS SHALL MEET THE REQUIREMENTS OF THE INTERNATIONAL MECHANICAL CODE, SECTION 902.2.1.
- PIPING SHALL NOT BE INSTALLED ABOVE ELECTRICAL PANELS. COORDINATE INSTALLATION OF PIPES WITH ELECTRICAL PANELS WHEN SHOWN NEAR PANELS OR OVER ELECTRICAL ROOMS.

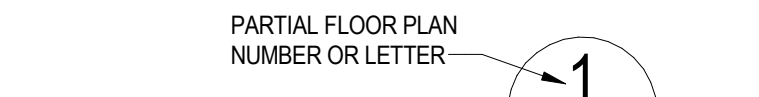


SCALE:

SHEET NUMBER WHERE PARTIAL FLOOR PLAN IS TAKEN

PLAN TITLE

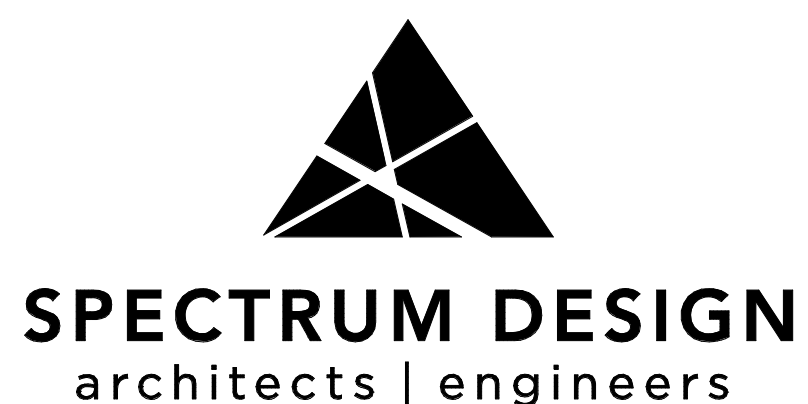
PARTIAL FLOOR PLAN NUMBER OR LETTER



SHEET NUMBER WHERE PARTIAL FLOOR PLAN IS DRAWN

PLAN SYMBOL

PARTIAL FLOOR PLAN IDENTIFICATION



Plaza Suite 1
10 Church Avenue, SE
Roanoke, VA 24011

540.342.6001
spectrumpc.com



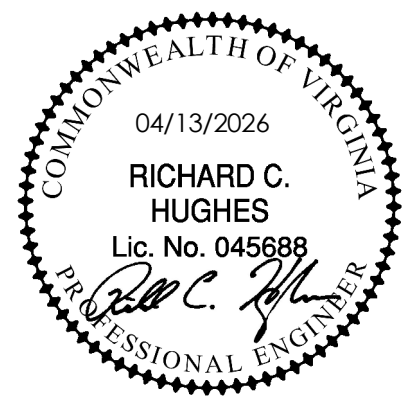
15 E Salem Avenue SE, Suite 101
Roanoke, Virginia 24011
Ph: (540) 343-1816
Fax: (540) 344-3410

Comm. No.: 25114
© Lawrence Perry and Associates, Inc.

RENOVATIONS & ADDITIONS TO

BEDFORD COUNTY SHERIFF'S OFFICE

SPECTRUM DESIGN PROJECT NO.: 24112



PROJ. MGR.: RCH
CHECKED BY: MGW
DRAWN BY: CAD

SHEET ISSUE DATE:
04.13.2026

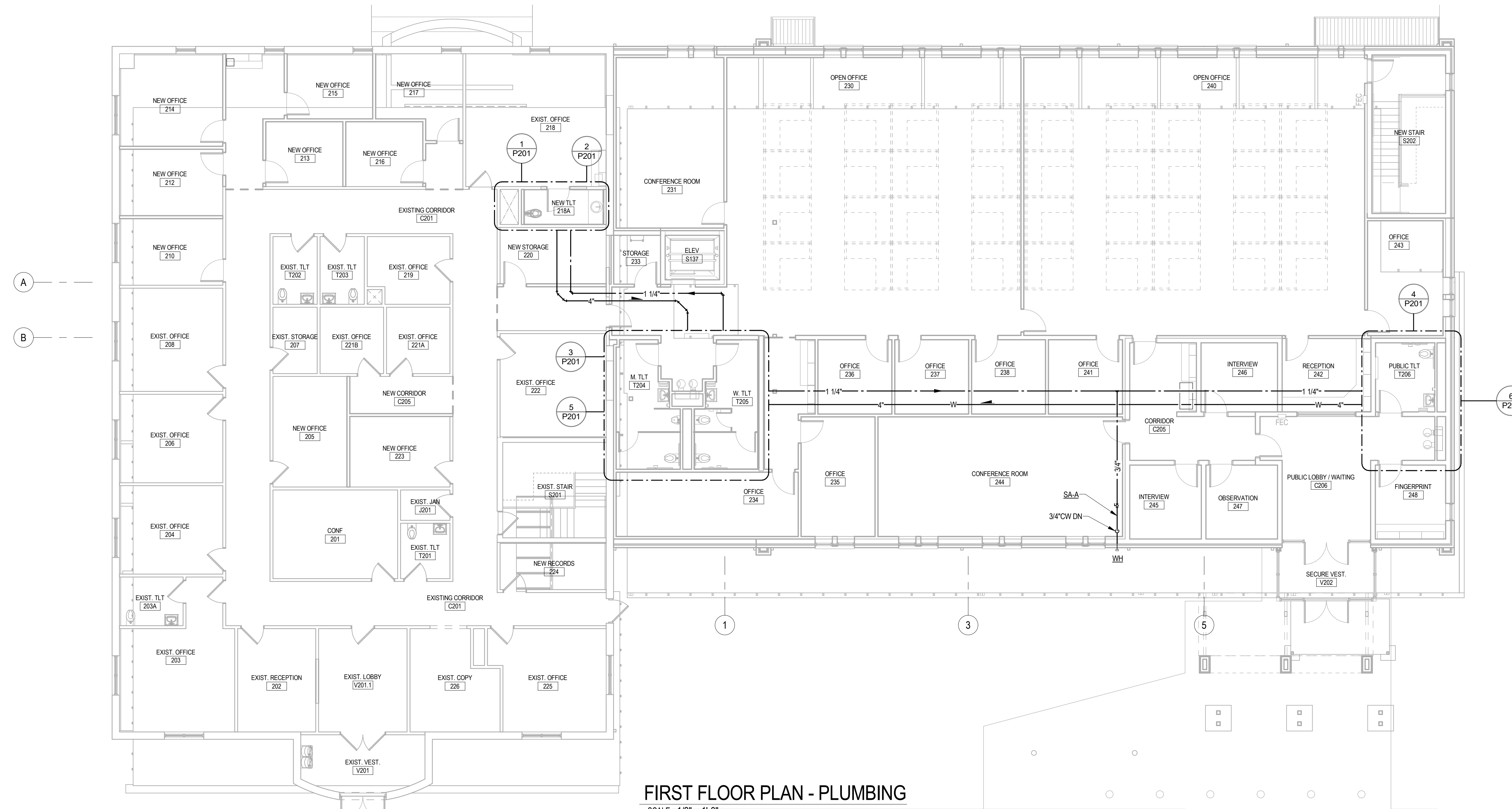
PROJECT PHASE:
CONSTRUCTION DOCUMENTS

SHEET REVISIONS:

PLAN NORTH

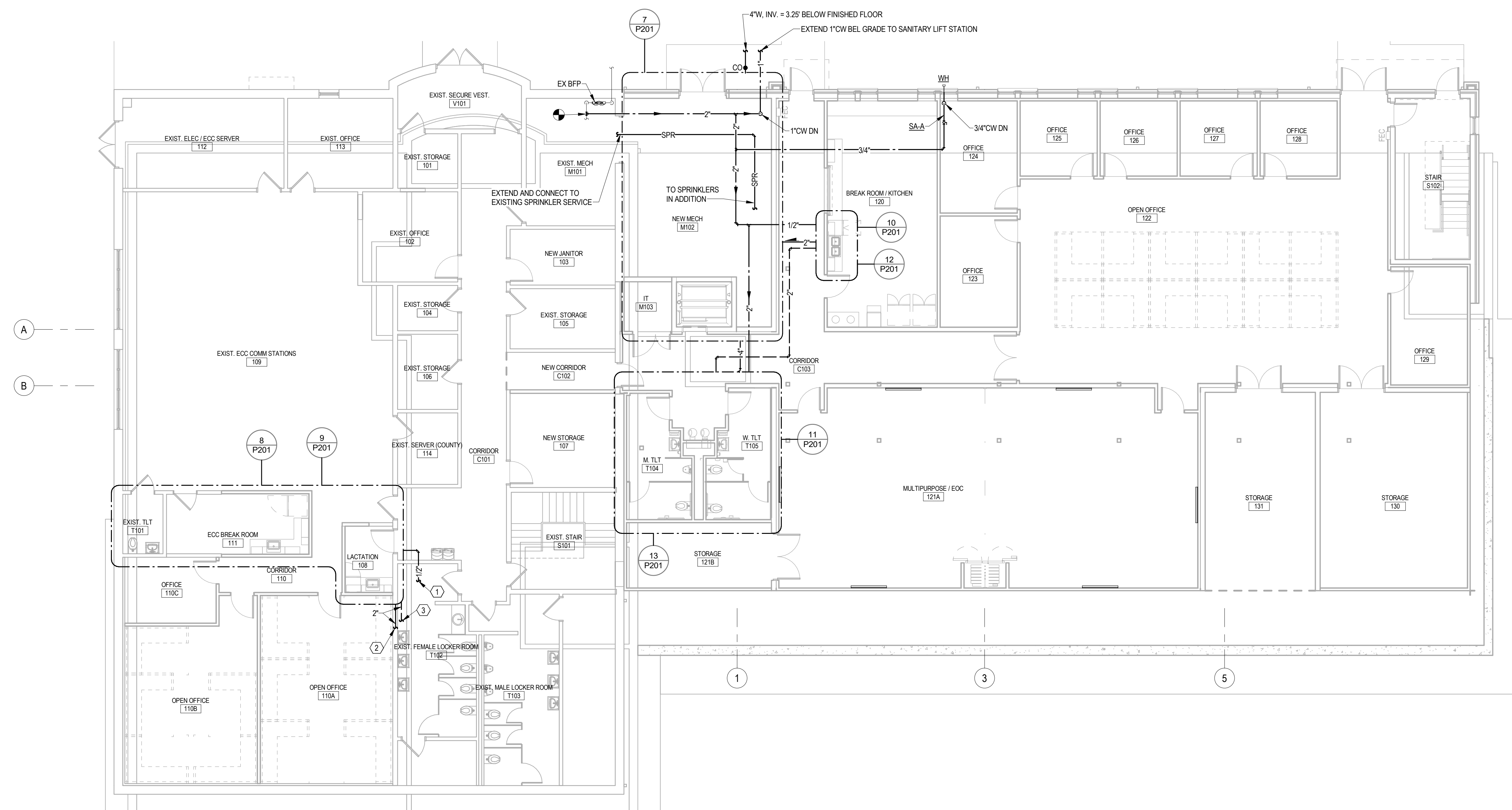
SHEET NUMBER:
PLUMBING LEGEND, DETAILS AND NOTES

SHEET NUMBER:
P001



FIRST FLOOR PLAN - PLUMBING

SCALE: 1/8" = 1'-0"

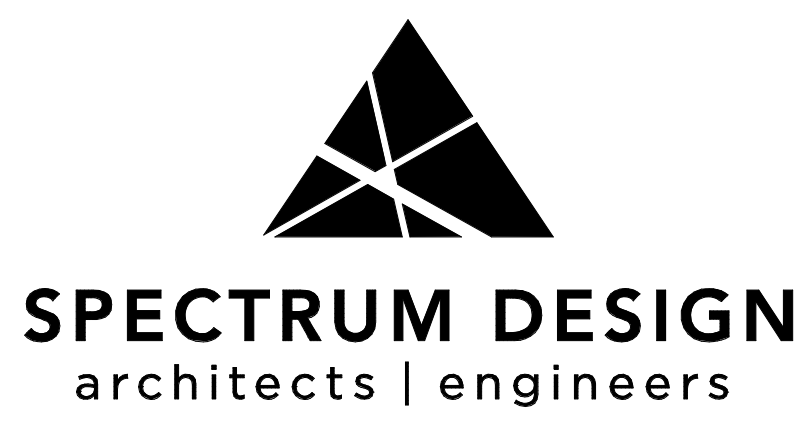


GROUND FLOOR PLAN - PLUMBING

SCALE: 1/8" = 1'-0"

PARTIAL PLAN PLUMBING NOTES:

1. CONNECT NEW COLD WATER LINES TO EXISTING HOT AND COLD WATER LINES.
2. CONNECT NEW SANITARY WASTE PIPING TO EXISTING SANITARY WASTE PIPING IN WALL BEHIND EXISTING LAVATORIES.
3. CONNECT NEW VENT PIPING TO EXISTING VENT PIPING ABOVE CEILING FOR EXISTING LAVATORIES.



Plaza Suite 1
10 Church Avenue, SE
Roanoke, VA 24011

540.342.4001
spectrumpc.com



LAWRENCE PERRY & ASSOCIATES
Consulting Engineers

15 E. Salem Avenue SE, Suite 101
Roanoke, Virginia 24011

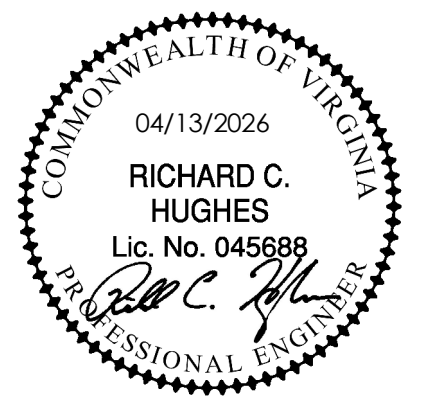
PH: (540) 343-1816
FAX: (540) 344-3410

Comm. No.: 25114
© Lawrence Perry and Associates, Inc.

RENOVATIONS & ADDITIONS TO

BEDFORD COUNTY SHERIFF'S OFFICE

SPECTRUM DESIGN PROJECT NO.: 24112

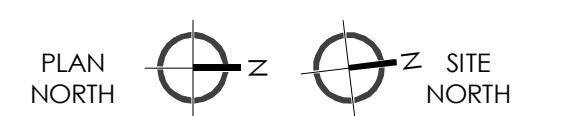


PROJ. MGR.: **RCH** CHECKED BY: **MGW** DRAWN BY: **CAD**

SHEET ISSUE DATE:
04.13.2026

PROJECT PHASE:
CONSTRUCTION DOCUMENTS

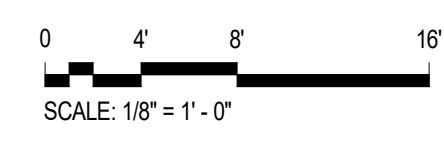
SHEET REVISIONS:



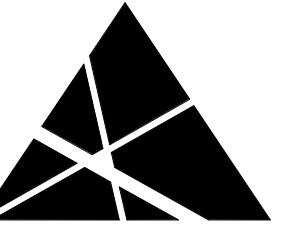
SHEET NAME:
FLOOR PLANS - PLUMBING

SHEET NUMBER:

P101



ORIGINAL DATE: ARCHIT (2024) 11/14/2024 11:46:07 AM
C:\Users\perry\Documents\31114 - Bedford Sheriff's Office - P101 - 101.dwg



SPECTRUM DESIGN
architects | engineers

Plaza Suite 1
10 Church Avenue, SE
Roanoke, VA 24011

540.342.6001
spectrumpc.com



LAWRENCE PERRY & ASSOCIATES
Consulting Engineers

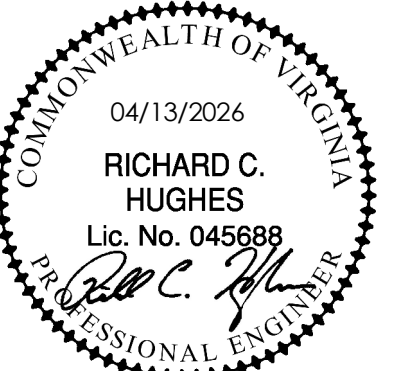
15 E. Salem Avenue, SE, Suite 101
Roanoke, Virginia 24011

Ph: (540) 343-1816
Fax: (540) 344-3410
Comm. No.: 25114
© Lawrence Perry and Associates, Inc.

RENOVATIONS & ADDITIONS TO

**BEDFORD COUNTY
SHERIFF'S OFFICE**

SPECTRUM DESIGN PROJECT NO.: 24112

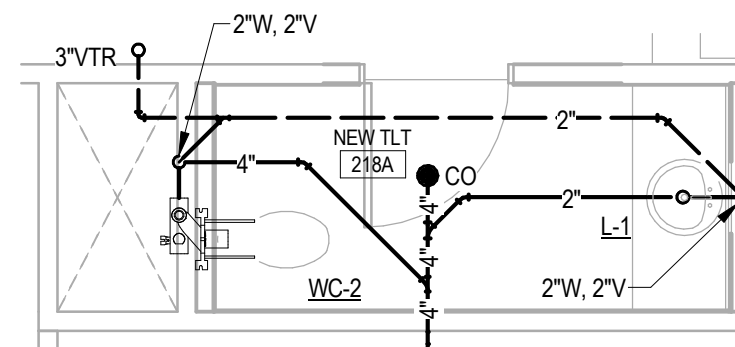


PROJ. MGR.: RCH
CHECKED BY: MGW
DRAWN BY: CAD

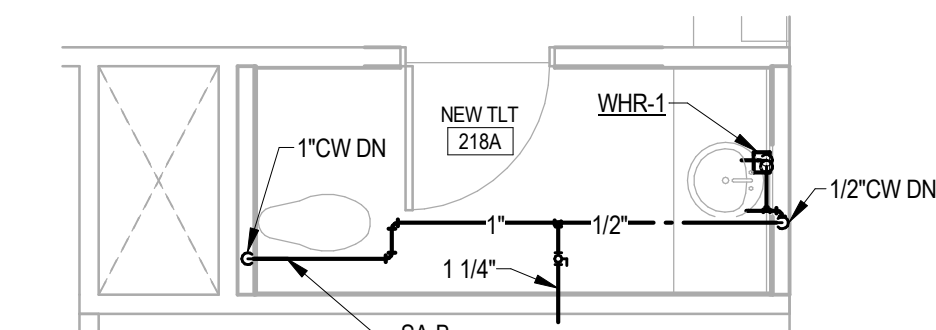
SHEET ISSUE DATE:
04.13.2026

PROJECT PHASE:
CONSTRUCTION DOCUMENTS

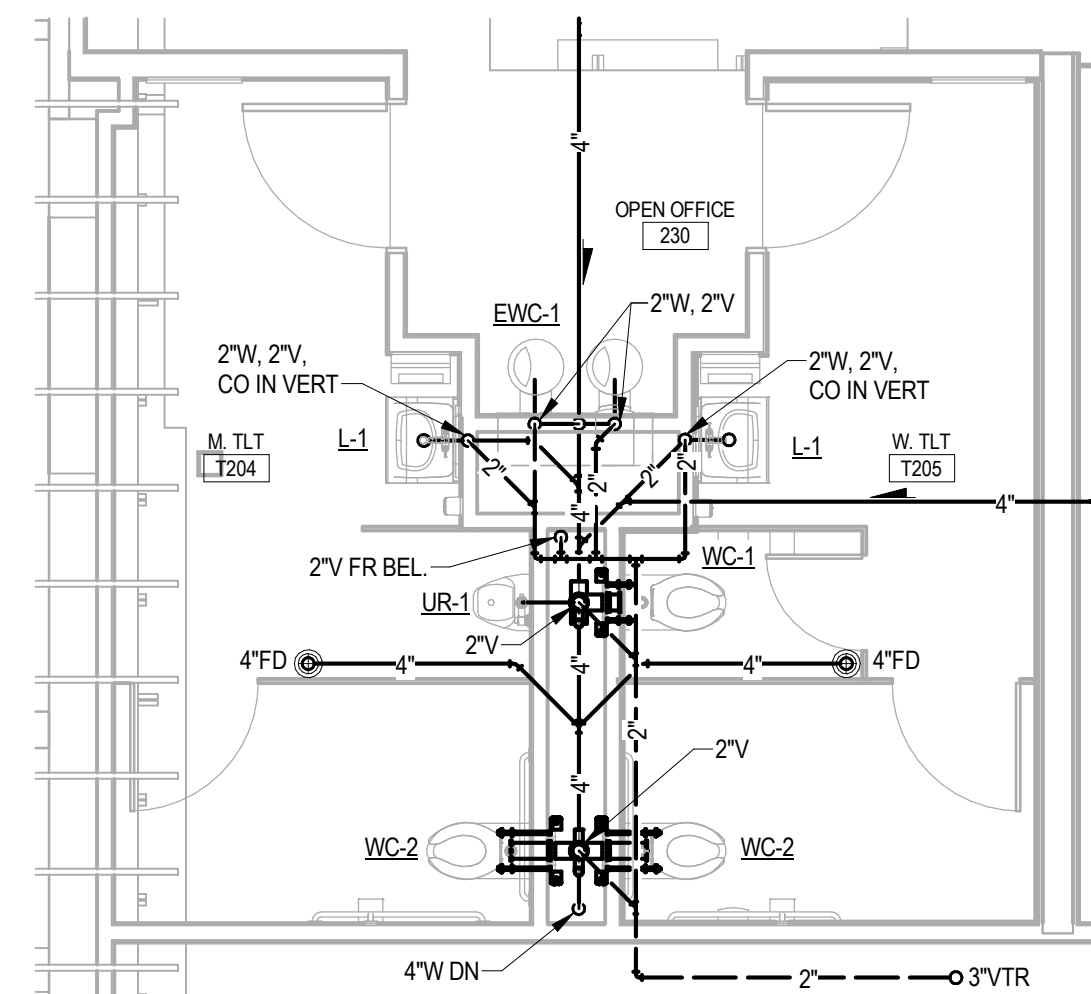
SHEET REVISIONS:



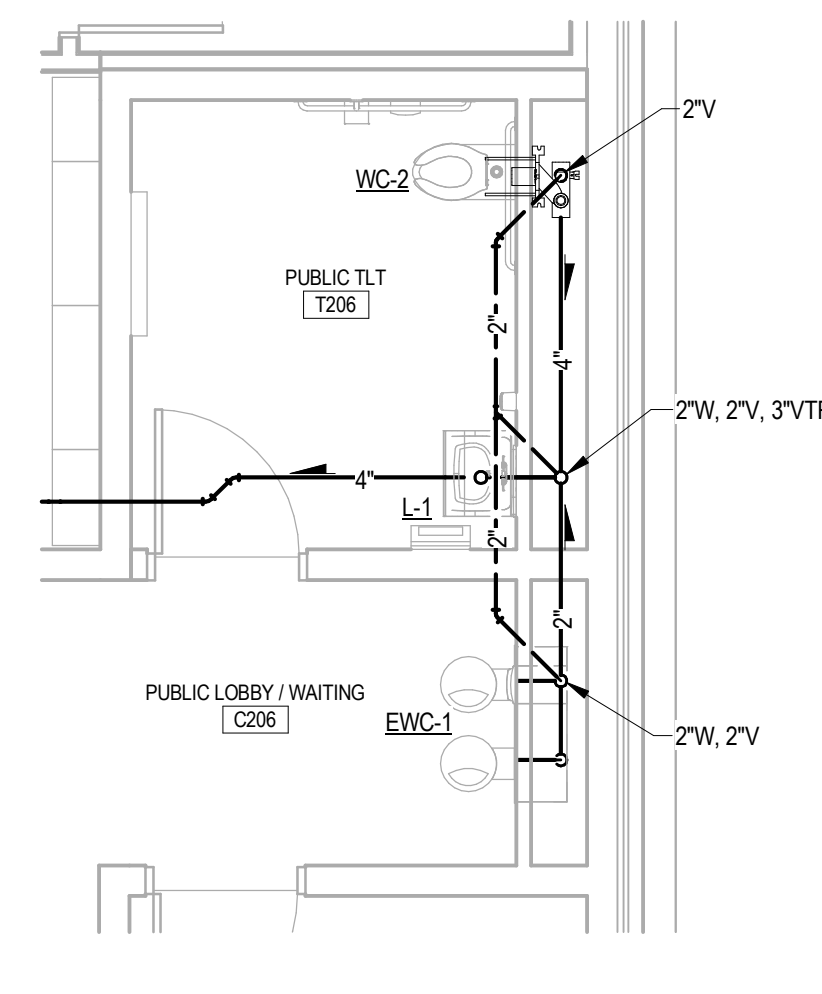
1 PARTIAL PLAN - PLUMBING
SCALE: 1/4" = 1'-0"



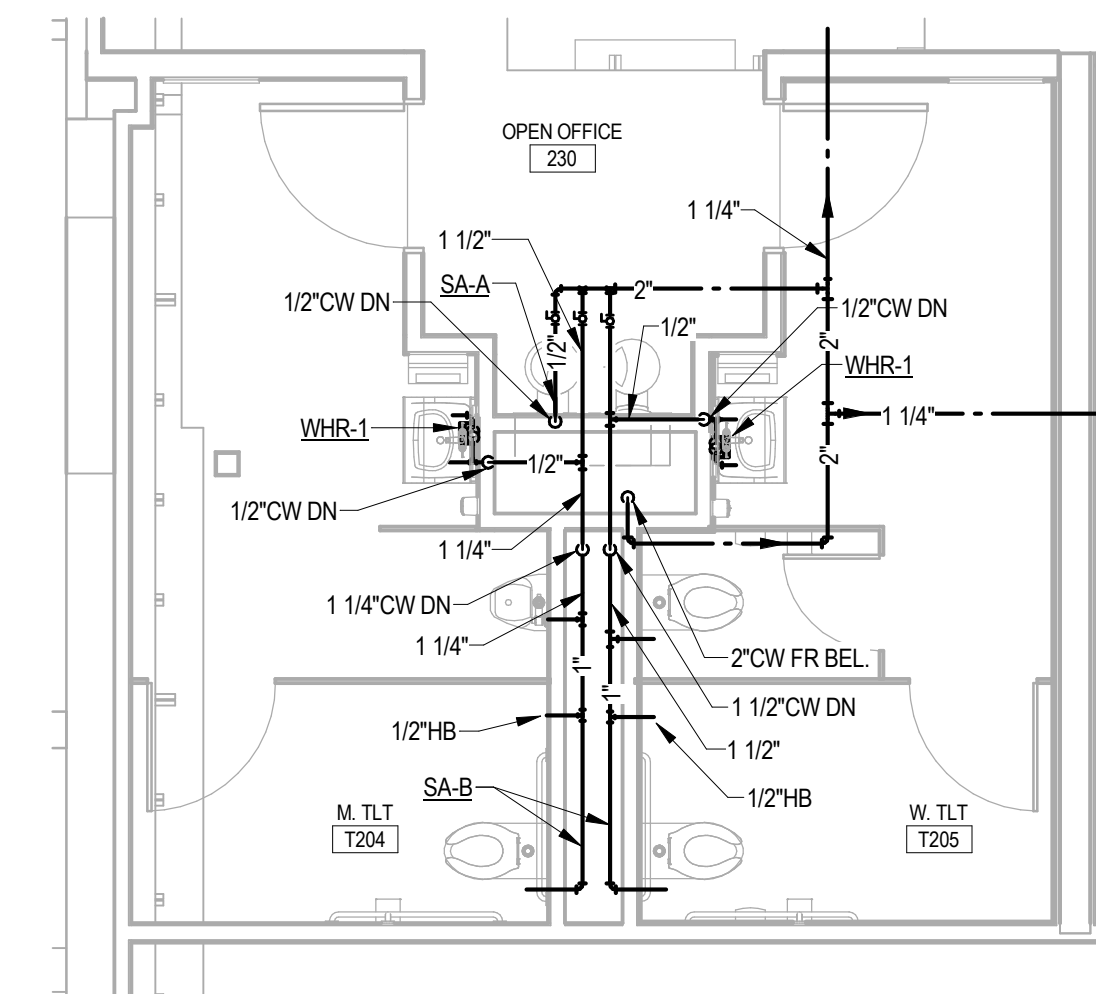
2 PARTIAL PLAN - PLUMBING
SCALE: 1/4" = 1'-0"



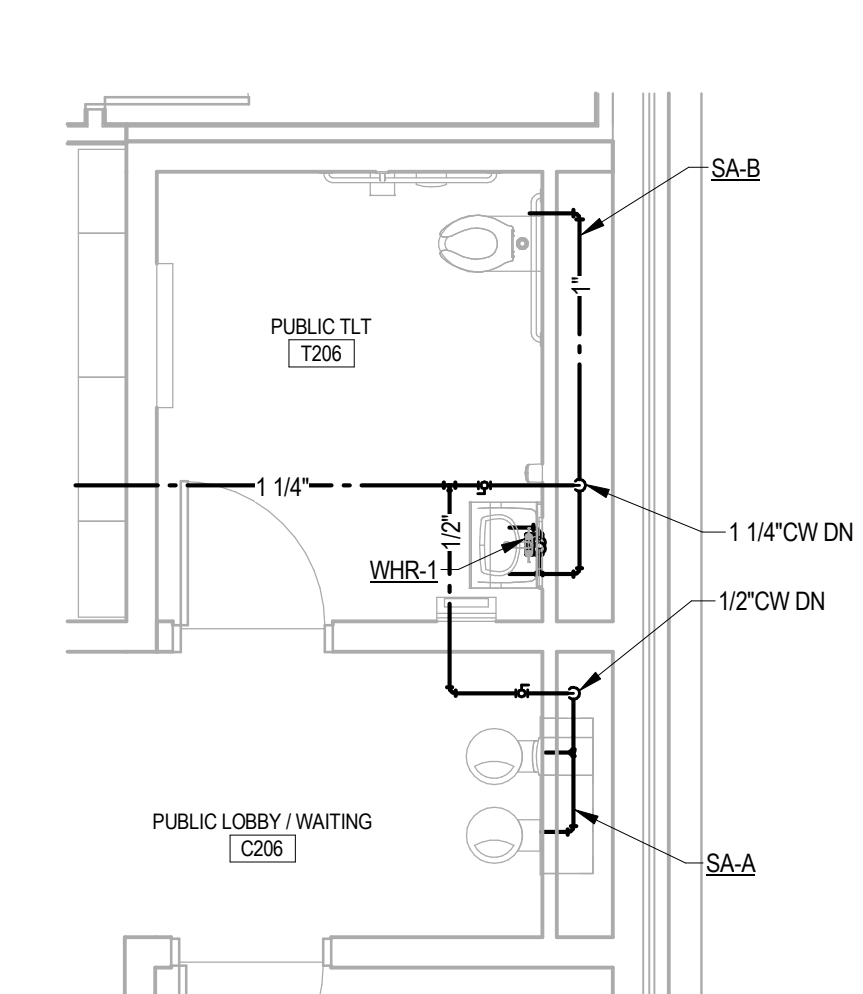
3 PARTIAL PLAN - PLUMBING
SCALE: 1/4" = 1'-0"



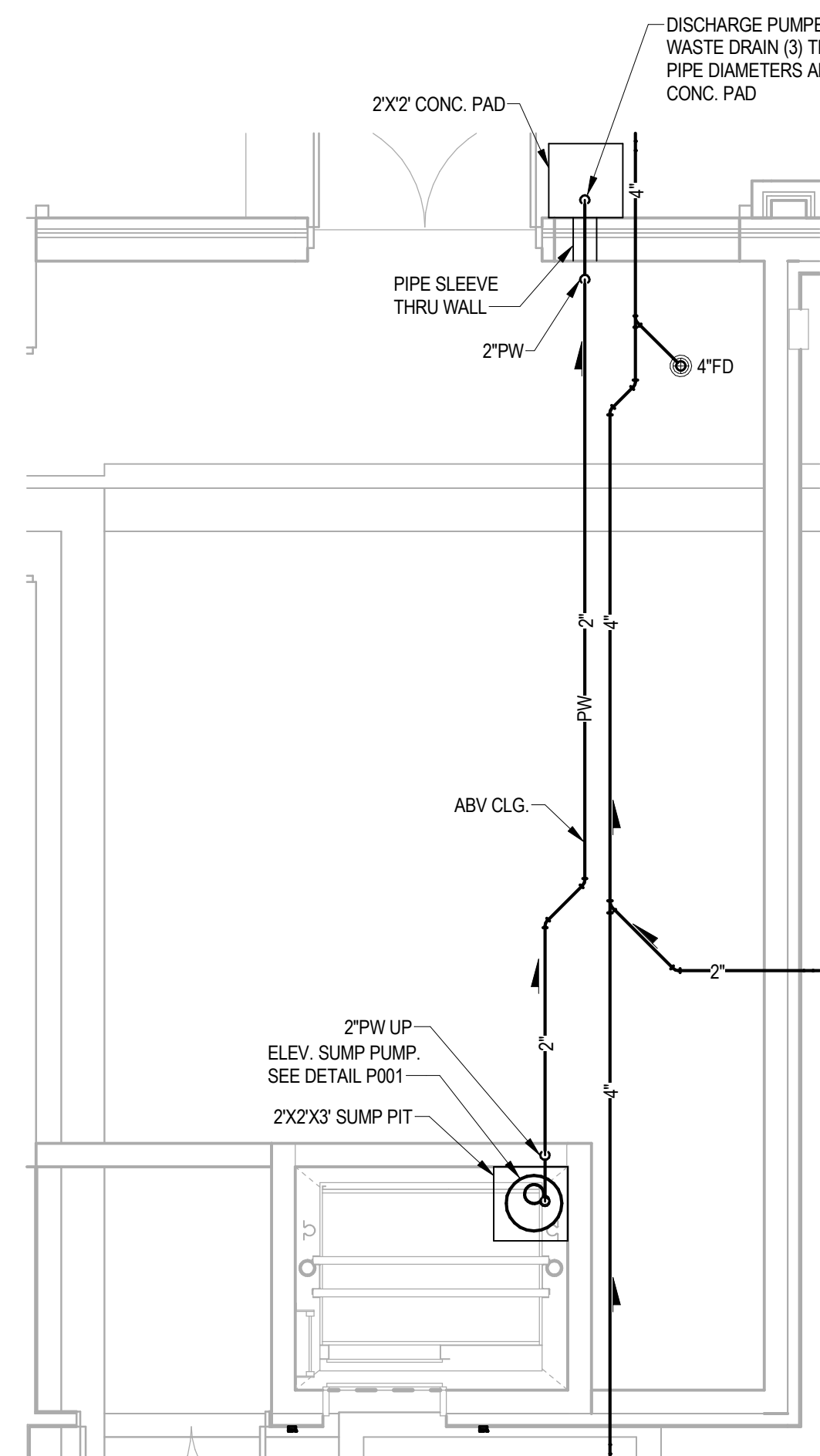
4 PARTIAL PLAN - PLUMBING
SCALE: 1/4" = 1'-0"



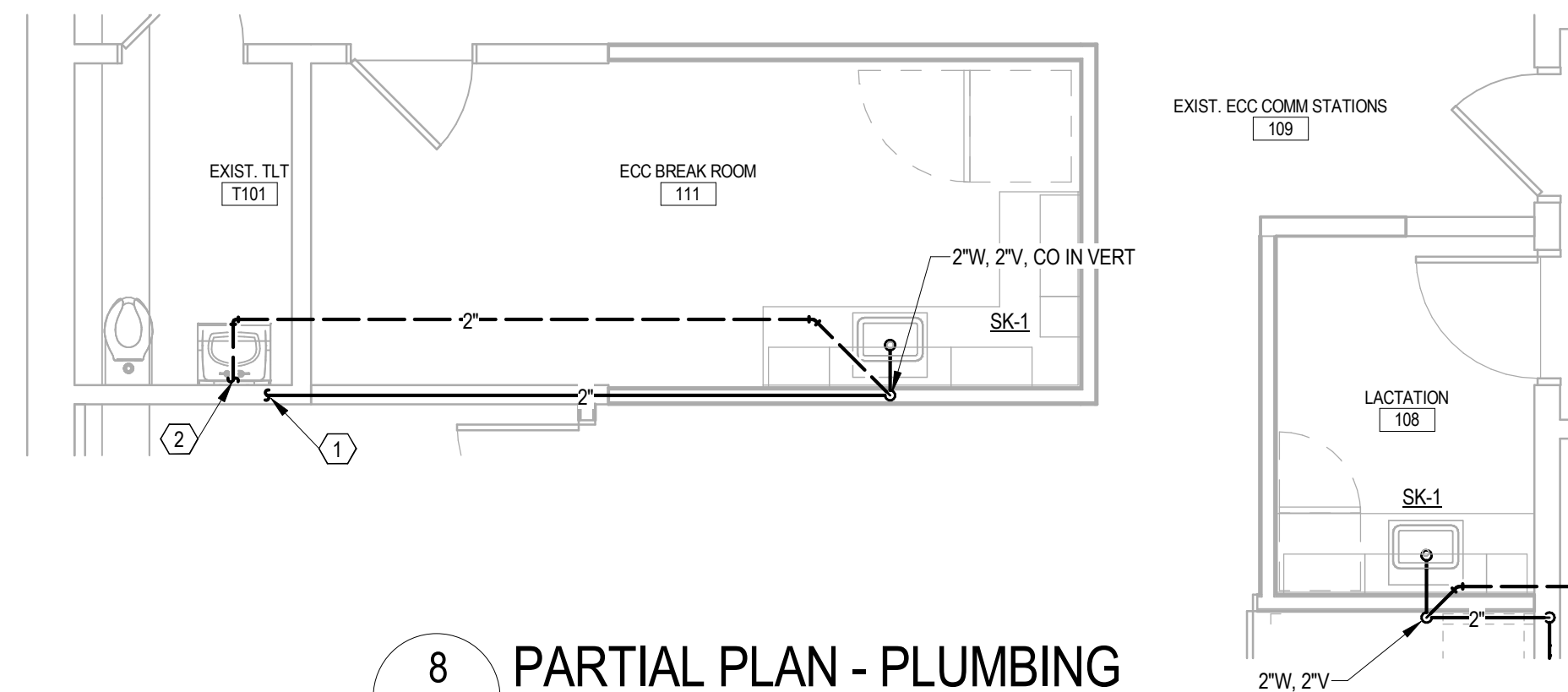
5 PARTIAL PLAN - PLUMBING
SCALE: 1/4" = 1'-0"



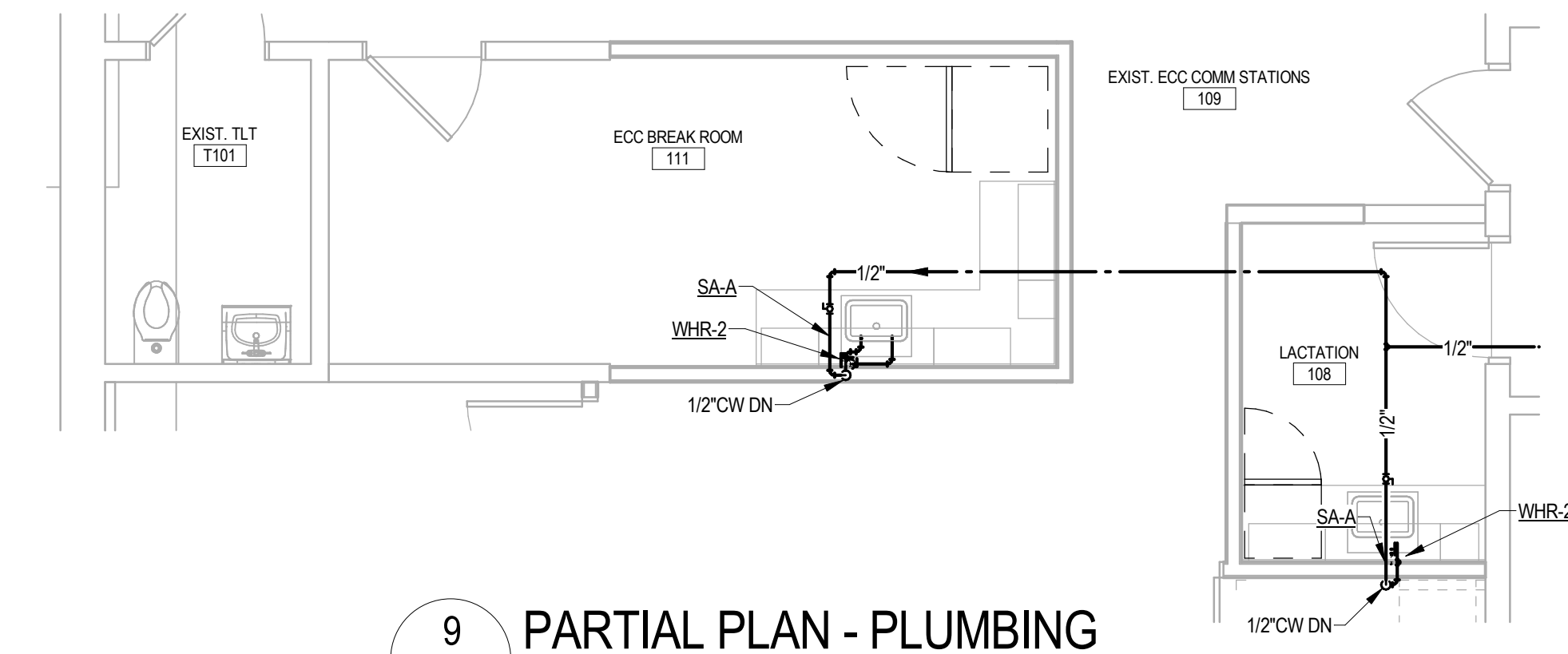
6 PARTIAL PLAN - PLUMBING
SCALE: 1/4" = 1'-0"



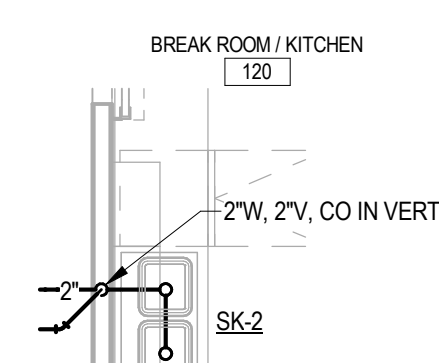
7 PARTIAL PLAN - PLUMBING
SCALE: 1/4" = 1'-0"



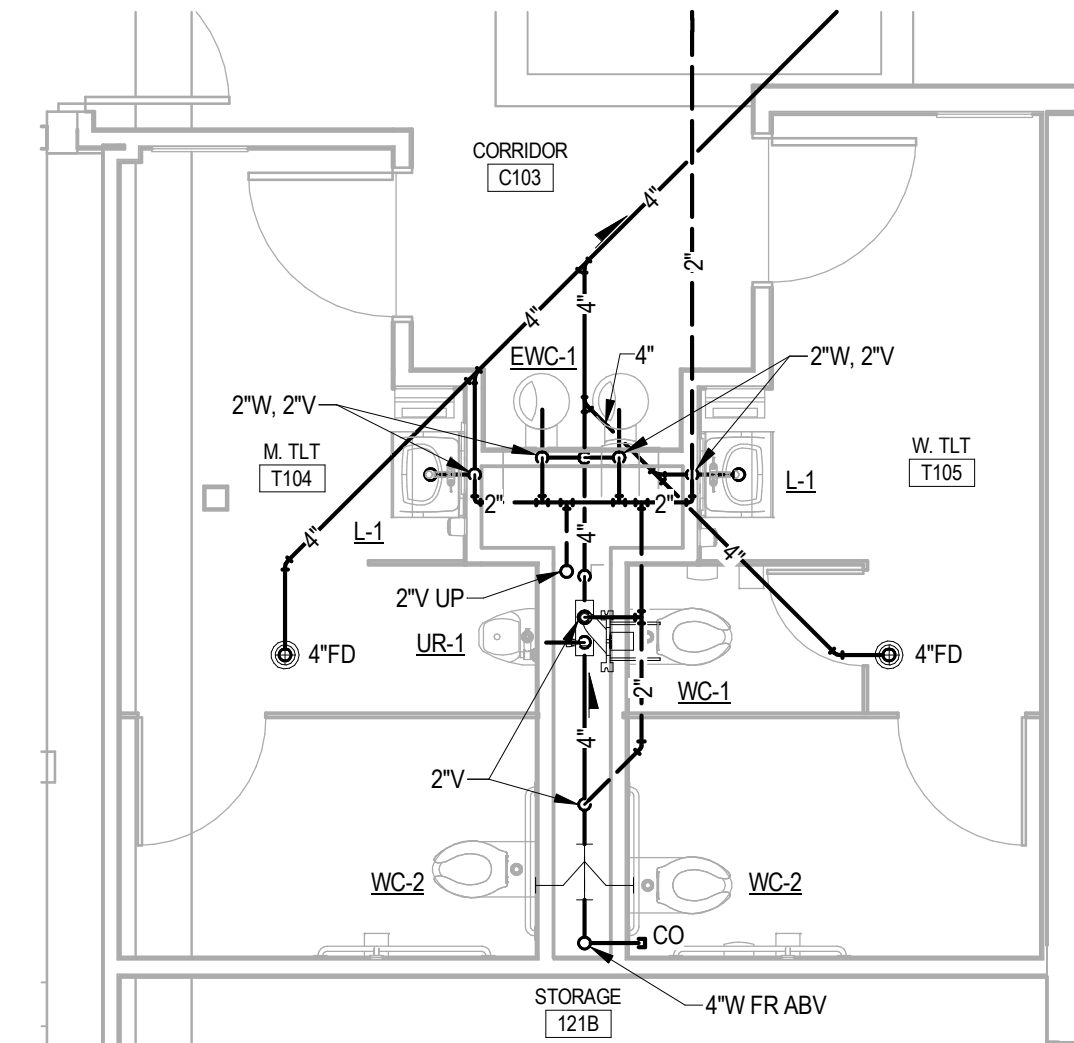
8 PARTIAL PLAN - PLUMBING
SCALE: 1/4" = 1'-0"



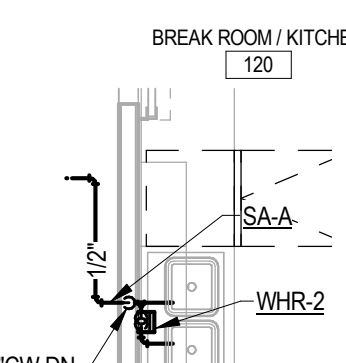
9 PARTIAL PLAN - PLUMBING
SCALE: 1/4" = 1'-0"



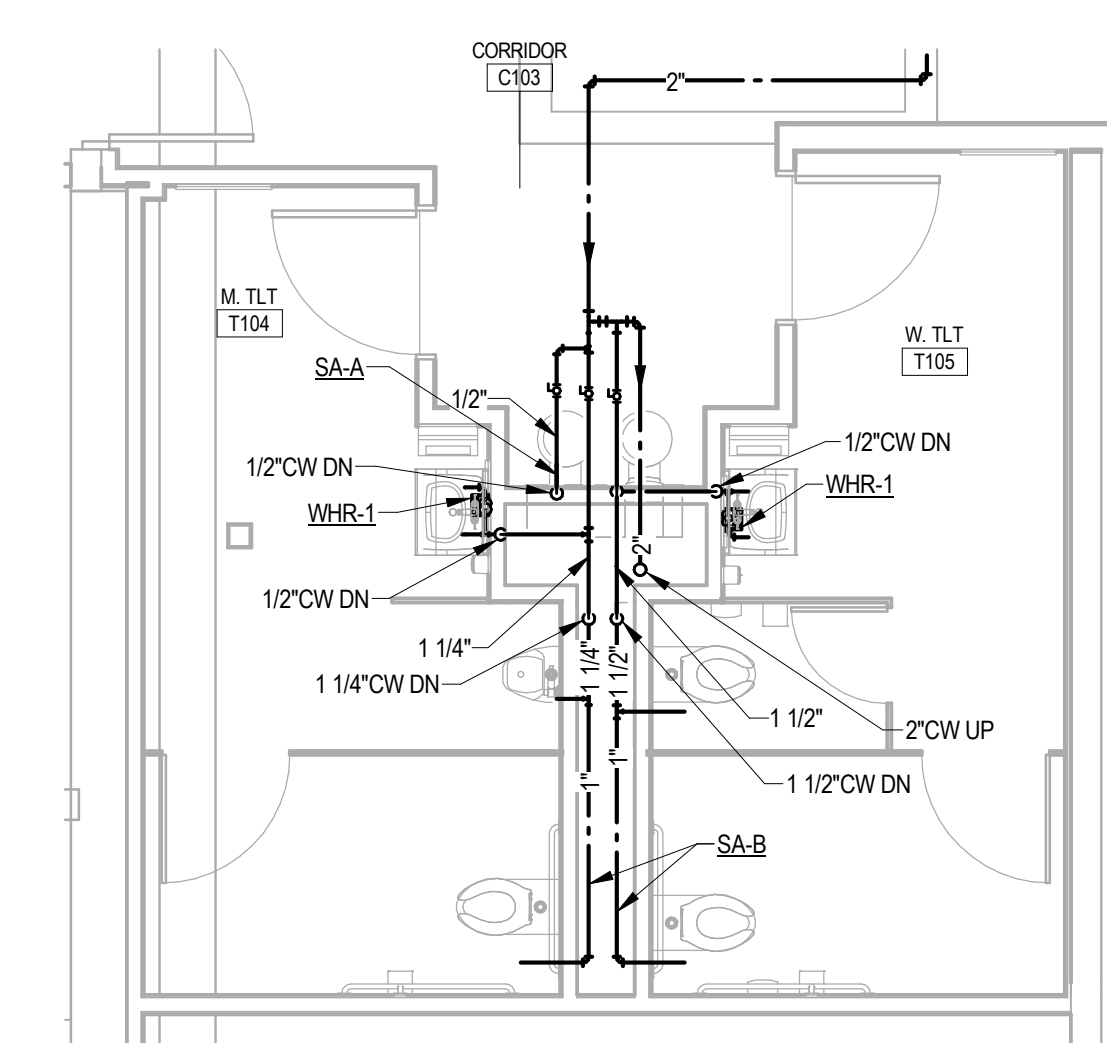
10 PARTIAL PLAN - PLUMBING
SCALE: 1/4" = 1'-0"



11 PARTIAL PLAN - PLUMBING
SCALE: 1/4" = 1'-0"



12 PARTIAL PLAN - PLUMBING
SCALE: 1/4" = 1'-0"



13 PARTIAL PLAN - PLUMBING
SCALE: 1/4" = 1'-0"

PLAN NORTH SITE NORTH

SHEET NAME:
**ENLARGED FLOOR
PLANS - PLUMBING**

SHEET NUMBER:

P201

PARTIAL PLAN NOTES:

- EXTEND NEW SANITARY WASTE PIPING TO EXISTING SANITARY WASTE PIPING IN WALL BEHIND EXISTING LAVATORY.
- EXTEND NEW VENT PIPING TO EXISTING VENT PIPING ABOVE CEILING BEHIND EXISTING LAVATORY.

