

PLUMBING ABBREVIATIONS

AAV	AIR ADMITTANCE VALVE	HWT	HOT WATER TANK
AC	AIR COMPRESSOR	INV. EL.	INVERT ELEVATION
AD	AREA DRAIN	KS	KITCHEN SINK
AFF	ABOVE FINISHED FLOOR	LAV	LAVATORY
AFG	ABOVE FINISHED GRADE	LPD	LOW POINT DRAIN
ASC	ABOVE SUSPENDED CEILING	LT	LAUNDRY TUB
AV	ACID VENT	M	METER
AW	ACID WASTE	MC	MECHANICAL CONTRACTOR
AWC	AUTOMATIC WASHER CONNECTION	MH	MANHOLE
BAV	BALANCING VALVE	MSB	MOP SERVICE BASIN
BC	BALANCING COCK	MV	MIXING VALVE
BFP	BACKFLOW PREVENTER	NIC	NOT IN CONTRACT
BT	BATHTUB	NPW	NON-POTABLE WATER
BTU	BRITISH THERMAL UNIT	NTS	NOT TO SCALE
BV	BALL VALVE	OI	OIL INTERCEPTOR
CA	COMPRESSED AIR	OS&Y	OUTSIDE SCREW & YOKE
CB	CATCH BASIN	OSI	OIL SEDIMENT INTERCEPTOR
CFH	CUBIC FEET PER HOUR	OSW	OPEN SITE WASTE
CHKV	CHECK VALVE	P	PUMP
CI	CAST IRON	PC	PLUMBING CONTRACTOR
CO	CLEANOUT	PD	PUMP DISCHARGE
CS	CLINICAL SINK	PRV	PRESSURE REDUCING VALVE
CSS	CLINICAL SERVICE SINK	PT	PLASTER TRAP
CW	COLD WATER	PVC	POLYVINYL CHLORIDE
CWP	CIRCULATING WATER PUMP	RD	ROOF DRAIN
D	DRAIN LINE	RH	ROOF HYDRANT
DF	DRINKING FOUNTAIN	RV	RELIEF VENT
DI	DISTILLED WATER	RWL	RAIN WATER LEADER
DIW	DEIONIZED WATER	SAN	SANITARY SEWER
DN	DOWN	SCW	SOFTENED COLD WATER
DS	DOWNSPOUT	SD	SCRUBBER DRAIN
DSN	DOWN SPOUT NOZZLE	SE	SEWAGE EJECTOR
DWH	DOMESTIC WATER HEATER	SF	SQUARE FOOT
DWV	DROP TO WASTE/RISE TO VENT	SHR	SHOWER
EC	ELECTRICAL CONTRACTOR	SK	SINK
EST	EMERGENCY STORM SEWER	SMP	SUMP PUMP
ET	EXPANSION TANK	SS	SERVICE SINK
EWC	ELECTRIC WATER COOLER	SSS	SURGICAL SERVICE SINK
EWH	ELECTRIC WATER HEATER	ST	STORM SEWER
EXIST	EXISTING	STN	STRAINER
F	FAHRENHEIT DEGREES	SWE	STORM WATER EJECTOR
FACP	FIRE ALARM CONTROL PANEL	TFA	TO FLOOR ABOVE
FBO	FURNISHED BY OTHERS	TFB	TO FLOOR BELOW
FCO	FLOOR CLEANOUT	TP	TRAP PRIMER
FD	FLOOR DRAIN	TW	TEMPERED WATER
FDC	FIRE DEPARTMENT CONNECTION	UR	URINAL
FE	FIRE EXTINGUISHER	V	VENT
FEC	FIRE EXTINGUISHER CABINET	VAC	VACUUM
FFA	FROM FLOOR ABOVE	VB	VACUUM BREAKER
FFB	FROM FLOOR BELOW	VC	VALVE CABINET
FH	FIRE HYDRANT	VR	VENT RISE
FHC	FIRE HOSE CABINET	VTR	VENT THROUGH ROOF
FP	FIRE PROTECTION PIPING	WC	WATER CLOSET
FS	FLOOR SINK	WCO	WALL CLEANOUT
FT	FOOTING TILE	WF	WASH FOUNTAIN
G	GAS	WG	WATER GAUGE
GC	GENERAL CONTRACTOR	WH	WALL HYDRANT
GI	GREASE INTERCEPTOR	WHA	WATER HAMMER ARRESTOR
GLV	GLOBE VALVE	WIG	WIRE GUARD
GM	GAS METER	WM	WATER METER
GPH	GALLONS PER HOUR	WTCS	WATER TEMPERATURE CONTROL STATION
GPM	GALLONS PER MINUTE	WV	WET VENT
GT	GREASE TRAP	YCO	YARD CLEANOUT
GTV	GATE VALVE	YH	YARD HYDRANT
GWH	GAS WATER HEATER	ZVB	ZONE VALVE BOX (MEDICAL GAS)
HB	HOSE BIBB		
HP	HORSEPOWER		
HW	HOT WATER		
HWCP	HOT WATER CIRCULATING PUMP		
HWR	HOT WATER RECIRCULATION		

PLUMBING SYMBOLS - VALVES AND SPECIALTIES

	SHUT-OFF VALVE (GATE, BALL, ETC.)
	BALANCING VALVE (X INDICATES GPM)
	SHUT-OFF VALVE IN RISER
	MIXING VALVE
	GAS COCK
	CHECK VALVE
	STRAINER
	PRESSURE REDUCING VALVE
	GLOBE VALVE
	RELIEF VALVE (X INDICATES P - PRESSURE T - TEMPERATURE PT - COMBINATION PRESS/TEMP)
	BRANCH CONNECTION - BOTTOM
	BRANCH CONNECTION - TOP
	ELBOW - TURNED DOWN
	ELBOW - TURNED UP
	CAP
	CLEANOUT (FLOOR/WALL)
	FLOOR DRAIN
	ROOF DRAIN
	WALL HYDRANT
	HOSE BIBB
	REDUCER
	UNION
	PIPE GUIDE (PG)
	PIPE ANCHOR (PA)
	WATER HAMMER ARRESTOR (X INDICATES PDI SIZE)
	FLEXIBLE CONNECTOR
	DIRECTION OF FLOW
	DIRECTION OF DOWNWARD PITCH
	PRESSURE GAUGE
	THERMOMETER
	PRESSURE/TEMPERATURE TAP
	METER
	PUMP
	TRAP PRIMER VALVE
	PLUMBING FIXTURE No. (SEE SPEC.)
	PLUMBING SPECIALITY No. (SEE SPEC.)
	PLUMBING EQUIPMENT No. (SEE SPEC.)
	DRAWING SECTION NUMBER DRAWING WHERE FOUND
	DRAWING DETAIL NUMBER DRAWING WHERE FOUND
	ROOM NUMBER
	POINT OF CONNECTION/REMOVAL

PLUMBING SYMBOLS - PIPING DESIGNATIONS

	CW	COLD WATER
	HW	HOT WATER
	HWR	HOT WATER CIRCULATING
	SAN	SANITARY SEWER
	V	VENT
	ST	STORM SEWER
	EST	EMERGENCY STORM SEWER
	D	DRAIN
	W	WATER MAIN (EXTERIOR)
	PD	PUMP DISCHARGE
	GAS	NATURAL GAS
	CA	COMPRESSED AIR

GENERAL NOTES

- THIS LEGEND SHEET IS FOR CONTRACTOR REFERENCE ONLY. NOT ALL SYMBOLS AND/OR ABBREVIATIONS MAY APPLY TO THIS PARTICULAR PROJECT. ANY ADDITIONS OR OMISSIONS FROM THIS LEGEND SHEET DOES NOT IMPLY INCLUSION AND/OR EXCLUSION OF ANY PARTICULAR ITEM FROM THE PROJECT.
- THE PLANS ARE DIAGRAMMATIC AND INDICATE ONLY THE SIZE AND GENERAL ARRANGEMENT OF PIPING AND EQUIPMENT. EXACT LOCATION OF ALL ELEMENTS SHALL BE DETERMINED AS WORK PROGRESSES, IN COOPERATION AND COORDINATION WITH THE WORK OF ALL OTHER TRADES. IT IS NOT INTENDED TO SHOW EVERY ITEM OF WORK OR MINOR PIECE OF EQUIPMENT, BUT THE CONTRACTOR SHALL FURNISH AND INSTALL WITHOUT ADDITIONAL REMUNERATION ANY COMPONENT NECESSARY TO COMPLETE THE SYSTEM IN ACCORDANCE WITH THE BEST PRACTICE OF THE TRADE.
- ITEMS OF WORK OR EQUIPMENT SHOWN ON THE DRAWINGS ONLY, OR CALLED FOR IN THE SPECIFICATIONS ONLY, SHALL BE FURNISHED AND INSTALLED IN THE SAME MANNER AS IF THEY APPEARED ON BOTH THE DRAWINGS AND SPECIFICATIONS.
- DRAWINGS DO NOT INDICATE ALL OFFSETS, CHANGES IN ELEVATIONS, ETC. WHICH MAY BE REQUIRED. THE CONTRACTOR SHALL MAKE SUCH CHANGES IN PIPING AND LOCATION OF EQUIPMENT, ETC. TO ACCOMMODATE WORK WITH THAT OF OTHER CONTRACTORS.
- INSTALL EQUIPMENT AND PIPING TO AVOID INTERFERENCE WITH THE OPERATION OR SERVICING AND MAINTENANCE OF EQUIPMENT.
- ALL COSTS FOR CUTTING, PATCHING AND PAINTING OF EXISTING WALLS, CEILINGS AND FLOORS TO ACCOMMODATE THE INSTALLATION OF PLUMBING WORK SHALL BE THE RESPONSIBILITY OF THE PLUMBING CONTRACTOR UNLESS INDICATED OTHERWISE. MATERIALS FOR RESTORATION OF EXISTING SURFACES SHALL MATCH THE EXISTING MATERIALS.
- PIPES PENETRATING FIRE WALLS AND FLOORS SHALL BE FIRESTOPPED AS SPECIFIED. REFER TO THE ARCHITECTURAL DRAWINGS FOR FIRE WALL AND FLOOR LOCATIONS.
- ALL PHYSICAL ATTRIBUTES OF EQUIPMENT AND DEVICES ARE BASED ON THOSE MANUFACTURERS LISTED IN THE SPECIFICATIONS AND/OR THE EQUIPMENT SCHEDULES. THE RESPECTIVE CONTRACTORS ARE RESPONSIBLE FOR ALL CHANGES BROUGHT ABOUT BY USE OF ITEMS BY OTHER MANUFACTURERS. THE ARCHITECT/ENGINEER HAS RESERVED THE RIGHT TO REJECT ITEMS BY OTHER MANUFACTURERS IF THOSE ITEMS DO NOT MATCH THE PHYSICAL ATTRIBUTES OF THE MANUFACTURERS LISTED.
- COMPLY WITH THE VIRGINIA STATE 2015 PLUMBING CODE, ASHRAE 90.1-2007, AND OTHER APPLICABLE CODES.

BLACKSBURG TRANSIT

BUILDING ADDRESS
1324 PERRY STREET, BLACKSBURG, VA 24060

MULTI-MODAL TRANSIT FACILITY BID SET



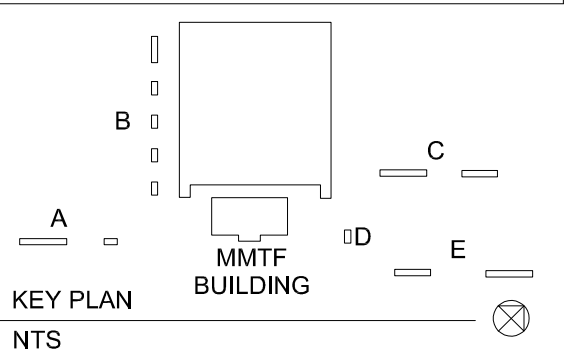
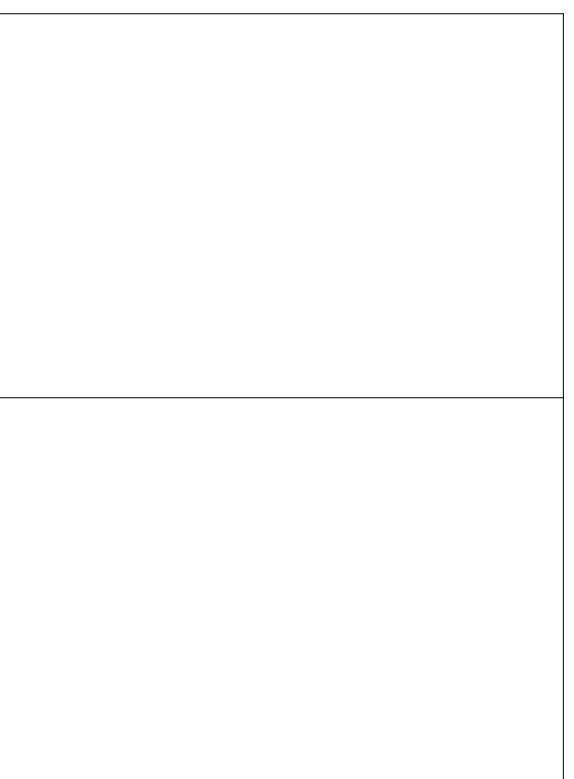
603 King Street, 4th Floor
Alexandria, VA 22314
www.wendelcompanies.com
p:703.299.8718 f:877.293.6335

ARCHITECTURE • ENGINEERING • PLANNING
ENERGY SERVICES • CONSTRUCTION MANAGEMENT



2206 South Main Street 540-552-0444
Blacksburg, VA 24060 www.daa.com
DAA Project No. B10172B-05

NOTE:
THIS DOCUMENT AND THE IDEAS AND DESIGNS INCORPORATED HEREIN, AS AN INSTRUMENT OF PROFESSIONAL SERVICE, IS THE PROPERTY OF THE ARCHITECT AND ENGINEER AND IS NOT TO BE USED IN WHOLE OR IN PART, FOR ANY OTHER PROJECT WITHOUT THE WRITTEN AUTHORIZATION OF THE ARCHITECT AND ENGINEER. UNAUTHORIZED ALTERATION OR ADDITION TO ANY SURVEY DRAWING, DESIGN SPECIFICATION PLAN OR REPORT IS PROHIBITED IN ACCORDANCE WITH STATE LAW, CODE AND RULES.



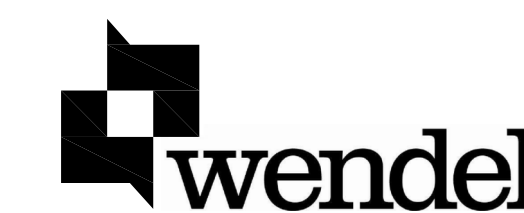
NO.	BY	REVISIONS	DATE
0		BID SET	09-15-2020

DWG. TITLE

PLUMBING SYMBOLS, NOTES, & ABBREVIATIONS

DATE	SEPTEMBER 15, 2020		
SCALE	AS NOTED		
DWN.	TIP	CHK.	CRL
PROJ. No.	449803		
DWG. No.	P001		

P001



603 King Street, 4th Floor
Alexandria, VA 22314
www.wendelcompanies.com
p:703.299.8718 f:877.293.6335

ARCHITECTURE • ENGINEERING • PLANNING
ENERGY SERVICES • CONSTRUCTION MANAGEMENT



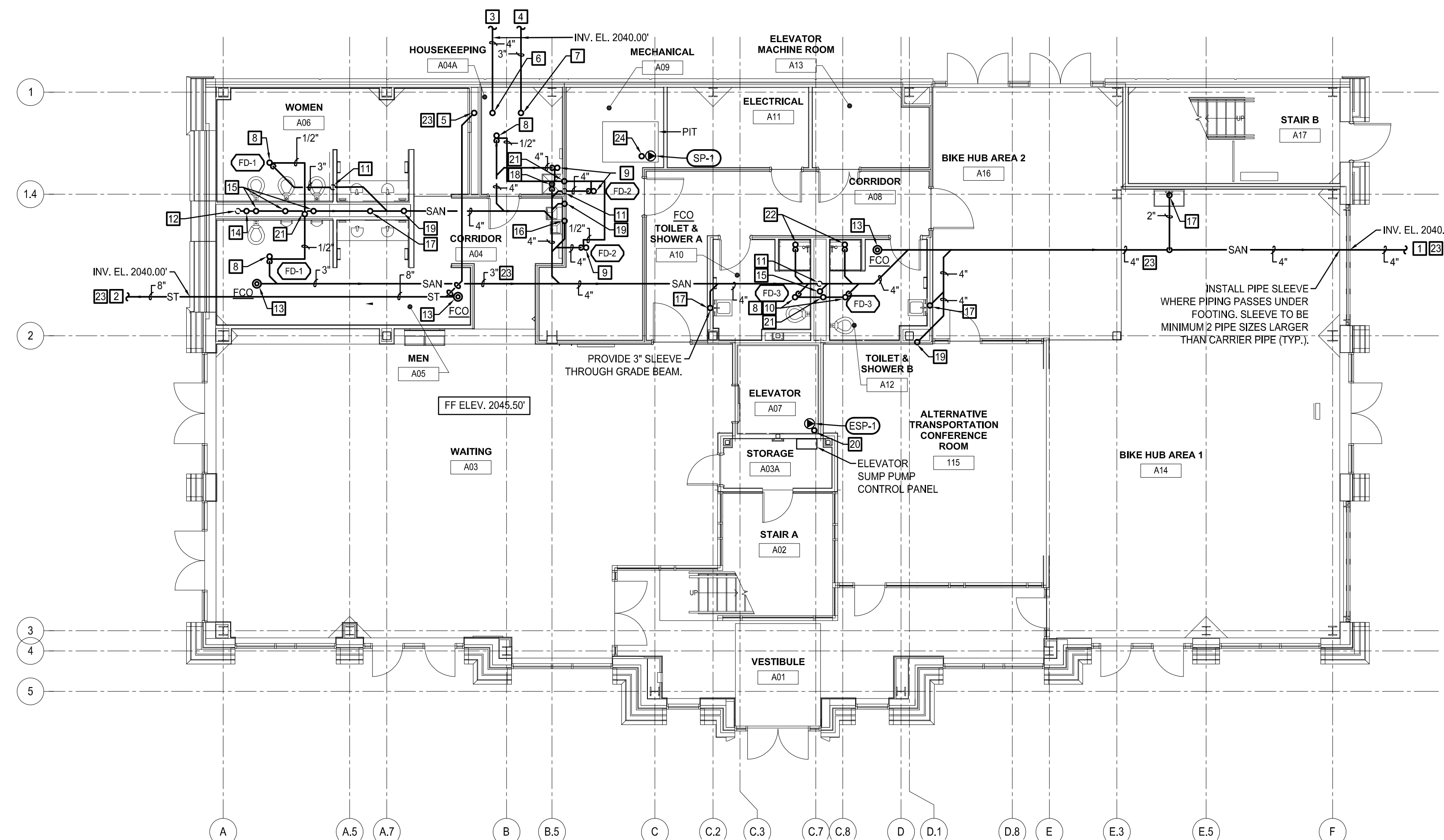
2206 South Main Street 540-552-0444
Blacksburg, VA 24060 www.daa.com
DAA Project No. B10172B-05

NOTE:
THIS DOCUMENT AND THE IDEAS AND DESIGNS INCORPORATED HEREIN, AS AN INSTRUMENT OF PROFESSIONAL SERVICE, IS THE PROPERTY OF THE ARCHITECT AND ENGINEER AND IS NOT TO BE USED IN WHOLE OR IN PART FOR ANY OTHER PROJECT WITHOUT THE WRITTEN AUTHORIZATION OF THE ARCHITECT AND ENGINEER. UNAUTHORIZED ALTERATION OR ADDITION TO ANY SURVEY DRAWING, DESIGN SPECIFICATION, PLAN OR REPORT IS PROHIBITED IN ACCORDANCE WITH STATE LAW, CODE AND RULES.

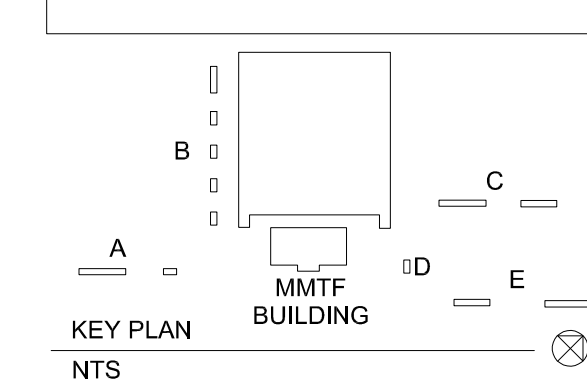
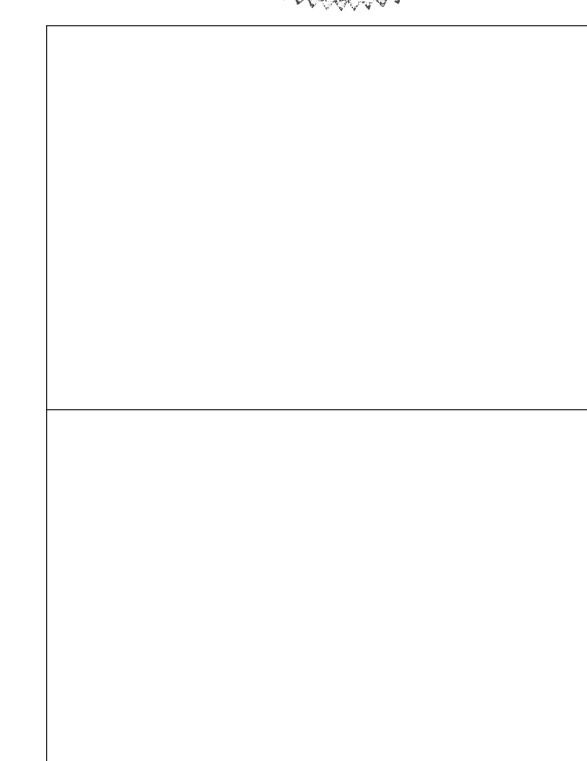


CONSTRUCTION NOTES:

1. EXTEND 4" SAN PIPING TO 5'-0" BEYOND BUILDING. REFER TO SITE DRAWINGS FOR CONTINUATION OF PIPING.
2. EXTEND 8"(6,800SF) STORM PIPING TO 5'-0" BEYOND BUILDING. REFER TO CIVIL DRAWINGS FOR CONTINUATION OF PIPING.
3. EXTEND 4" DUCTILE IRON FIRE PROTECTION MAIN TO 5'-0" BEYOND BUILDING. REFER TO CIVIL DRAWINGS FOR CONTINUATION OF PIPING.
4. EXTEND 3" DOMESTIC WATER DUCTILE IRON MAIN TO 5'-0" BEYOND BUILDING. REFER TO CIVIL DRAWINGS FOR CONTINUATION OF PIPING.
5. PROVIDE 8"(6,800SF) STORM PIPING UP.
6. PROVIDE 4" FIRE PROTECTION PIPING UP.
7. PROVIDE 3" CW PIPING UP.
8. PROVIDE 3" SAN PIPING WITH TRAP UP TO FD. PROVIDE 1/2" CW CONNECTION FOR TRAP PRIMER. REFER TO DETAIL 5/P201.
9. PROVIDE 4" SAN PIPING WITH TRAP UP TO FD. PROVIDE 1/2" CW CONNECTION FOR TRAP PRIMER. REFER TO DETAIL 5/P201.
10. PROVIDE 2" SAN PIPING WITH TRAP UP TO FD. REFER TO DETAIL 5/P201.
11. PROVIDE 2" V PIPING UP.
12. PROVIDE 3" V PIPING UP.
13. PROVIDE SAN OR STORM PIPING, SIZE AS INDICATED UP TO FCO.
14. PROVIDE 4" SAN PIPING UP TO WCO.
15. PROVIDE 4" SAN PIPING UP TO WC.
16. PROVIDE 2" SAN PIPING UP TO EWC.
17. PROVIDE 2" SAN PIPING UP TO LAV OR SINK.
18. PROVIDE 3" SAN PIPING WITH TRAP UP TO SHOWER OR MOP SINK.
19. PROVIDE 4" SAN PIPING UP.
20. PROVIDE 2" PD PIPING FROM ELEVATOR SUMP PIT UP.
21. PROVIDE 1/2" CW UP TO TRAP PRIMER VALVE. INSTALL INDIVIDUAL 1/2"CW FROM TRAP PRIMER DISTRIBUTION UNIT TO EACH FLOOR DRAIN CONNECTION.
22. PROVIDE 2" SAN PIPING UP TO SHOWER.
23. PLUMBING CONTRACTOR TO PROVIDE VIDEO INSPECTION OF ALL UNDERGROUND DRAINAGE PIPING SHOWING CONTINUOUS FALL THROUGHOUT THE SYSTEM. VIDEO DRAINS AFTER FLOOR SLAB INSTALLATION AND TURN VIDEO OVER TO VIRGINIA TECH.
24. PROVIDE 1 1/2"PD FROM MECHANICAL PIT UP.



1 PLUMBING FOUNDATION PLAN (UNDER SLAB)
SCALE: 1/8" = 1'-0"



NO.	BY	BID SET REVISIONS	DATE
0			09-15-2020

DWG. TITLE
PLUMBING FOUNDATION PLAN (UNDER SLAB)

DATE SEPTEMBER 15, 2020
SCALE AS NOTED
DWN. TIP CHK. CRL
PROJ. No. 449803
DWG. No.

P100



603 King Street, 4th Floor
Alexandria, VA 22314
www.wendelcompanies.com
p:703.299.8718 f:877.293.6335

ARCHITECTURE • ENGINEERING • PLANNING
ENERGY SERVICES • CONSTRUCTION MANAGEMENT



2206 South Main Street 540-552-0444
Blacksburg, VA 24060 www.daa.com
DAA Project No. B10172B-05

NOTE:
THIS DOCUMENT AND THE IDEAS AND DESIGNS INCORPORATED HEREIN, AS AN INSTRUMENT OF PROFESSIONAL SERVICE, IS THE PROPERTY OF THE ARCHITECT AND ENGINEER AND IS NOT TO BE USED IN WHOLE OR IN PART, FOR ANY OTHER PROJECT WITHOUT THE WRITTEN AUTHORIZATION OF THE ARCHITECT AND ENGINEER. UNAUTHORIZED ALTERATION OR ADDITION TO ANY SURVEY, DRAWING, DESIGN, SPECIFICATION, PLAN OR REPORT IS PROHIBITED IN ACCORDANCE WITH STATE LAW, CODE AND RULES.

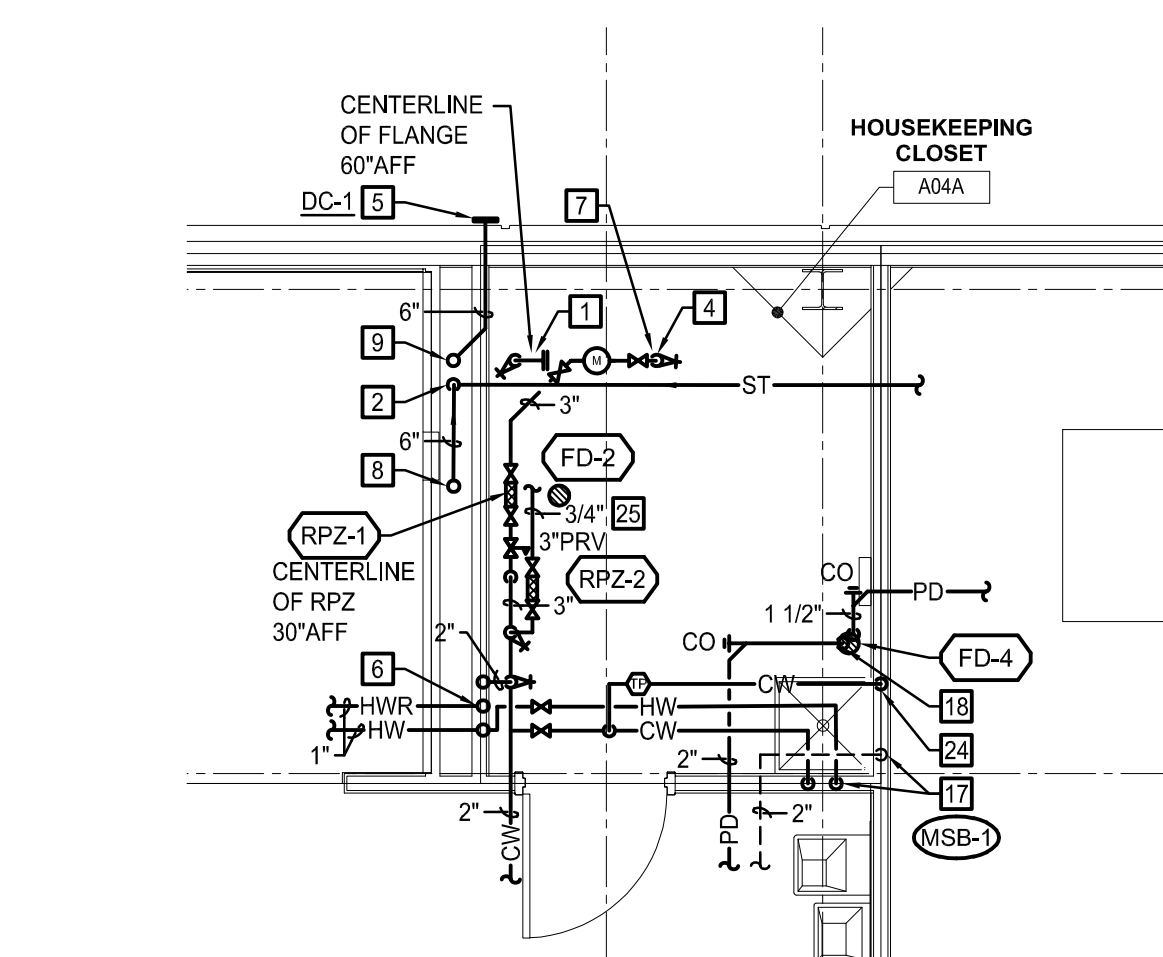


CONSTRUCTION NOTES:

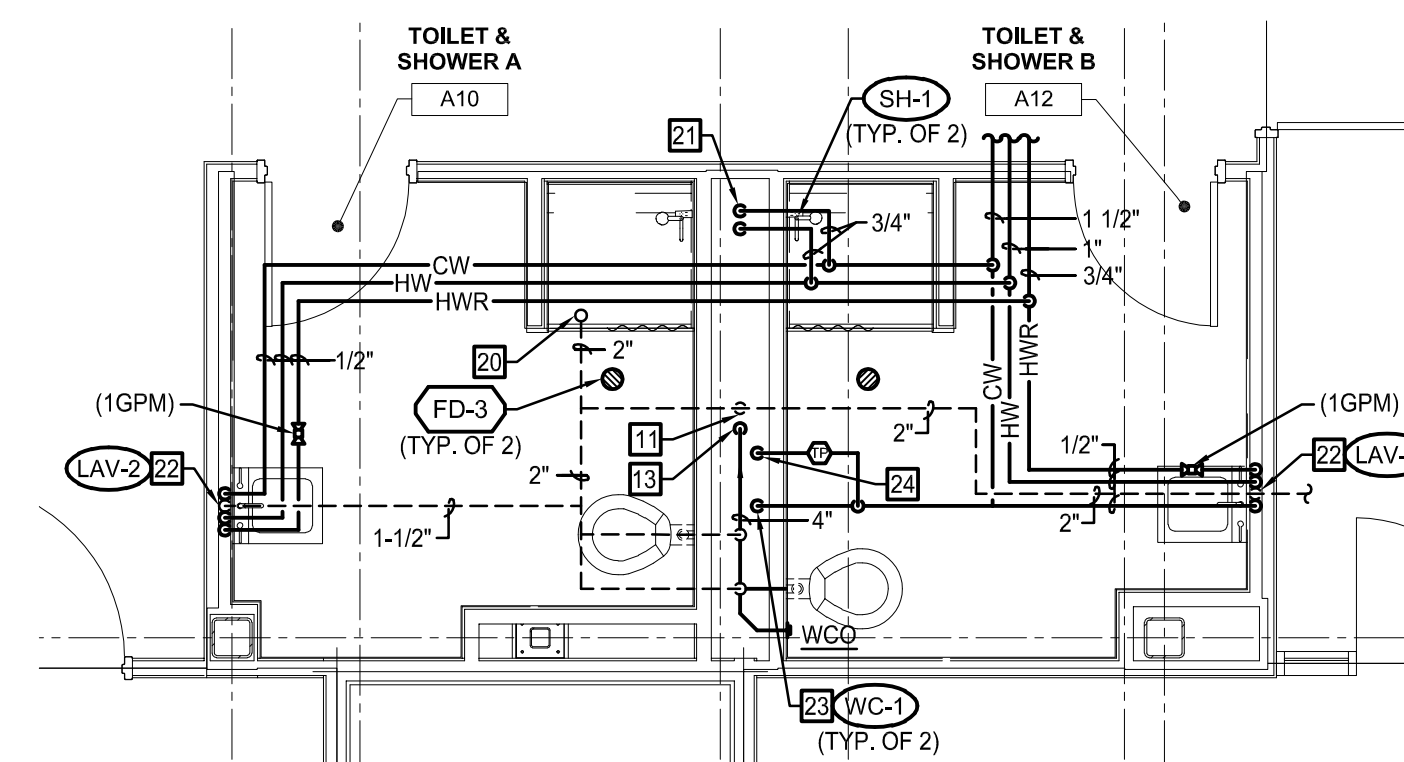
1. PROVIDE 4" FIRE PROTECTION PIPING DOWN. PROVIDE BLIND FLANGE. REFER TO FIRE PROTECTION DRAWINGS FOR CONTINUATION.
2. PROVIDE 6"(6,800SF) ST PIPING DOWN BELOW SLAB. INCREASE TO 8" ST PIPING A.F.F. PROVIDE CLEAN OUT AT 1'-6" A.F.F.
3. WALL HYDRANT / HOSE BIBB TO BE MOUNTED 20 INCHES ABOVE GRADE TO CENTERLINE.
4. PROVIDE 3" CW FROM BELOW.
5. TERMINATE 6" EST PIPING WITH DOWNSPOUT COVER A MINIMUM OR 2'-0" A.F.F. COORDINATE FINAL MOUNTING HEIGHT WITH G.C.
6. PROVIDE 2" CW, 1" HWR, 1" HW UP.
7. PROVIDE BACKFLOW PREVENTER ASSEMBLY AND WATER METER. REFER TO DETAIL 2/P201.
8. PROVIDE 6"(3,400SF) ST PIPING UP.
9. PROVIDE 6"(3,400SF) EST PIPING UP.
10. PROVIDE 4" SAN PIPING UP AND DOWN.
11. PROVIDE 2" V PIPING DOWN.
12. PROVIDE 3" V PIPING UP AND DOWN.
13. PROVIDE 4" SAN PIPING DOWN. PROVIDE WCO 1'-6" A.F.F.
14. PROVIDE 2" CW DOWN TO 2" HEADER FEEDING FLUSH FIXTURES ONLY. INSTALL WATER HAMMER ARRESTOR TYPE "C" ON CW BETWEEN LAST TWO FIXTURES
15. PROVIDE 3/4" CW AND 3/4" HW DOWN TO LAVATORIES WITH 1/2" BRANCHES TO EACH FIXTURE. 3/4" HW TO COME BACK OUT OF CHASE AS 3/4" HWR. CONNECT 1/2" HW TO EACH LAV WITHIN 2 FEET OF FAUCET.
16. PROVIDE 1/2" CW AND 1 1/2" V PIPING DOWN TO EWC.
17. PROVIDE 1/2" CW & HW, AND 2" V PIPING DOWN TO MSB.
18. TERMINATE 2" PD AND 1 1/2" PD PIPING WITH AIR BREAK AT FUNNEL DRAIN.
19. PROVIDE 2" PD PIPING DOWN TO ELEVATOR SUMP PUMP.
20. PROVIDE 2" V PIPING UP.
21. PROVIDE 3/4" CW & 3/4" HW PIPING DOWN TO SHOWERS.
22. PROVIDE 1/2" CW & 3/4" HW AND 2" V PIPING DOWN TO LAV OR SINK. CONNECT 1/2" HWR TO HW WITHIN 2 FEET OF FAUCET.
23. PROVIDE 1 1/4" CW DOWN TO W.C.S. INSTALL WATER HAMMER ARRESTOR TYPE "B" ON CW BETWEEN THE TWO WATER CLOSET CONNECTIONS.
24. PROVIDE 1/2" CW DOWN TO FLOOR DRAIN TRAP PRIMER CONNECTION.
25. PROVIDE 3/4" MAKEUP WATER FOR HEATING HOT WATER. CONTINUATION BY HVAC CONTRACTOR.
26. PROVIDE 1 1/2" PD PIPING DOWN TO SUMP PUMP.

GENERAL NOTES:

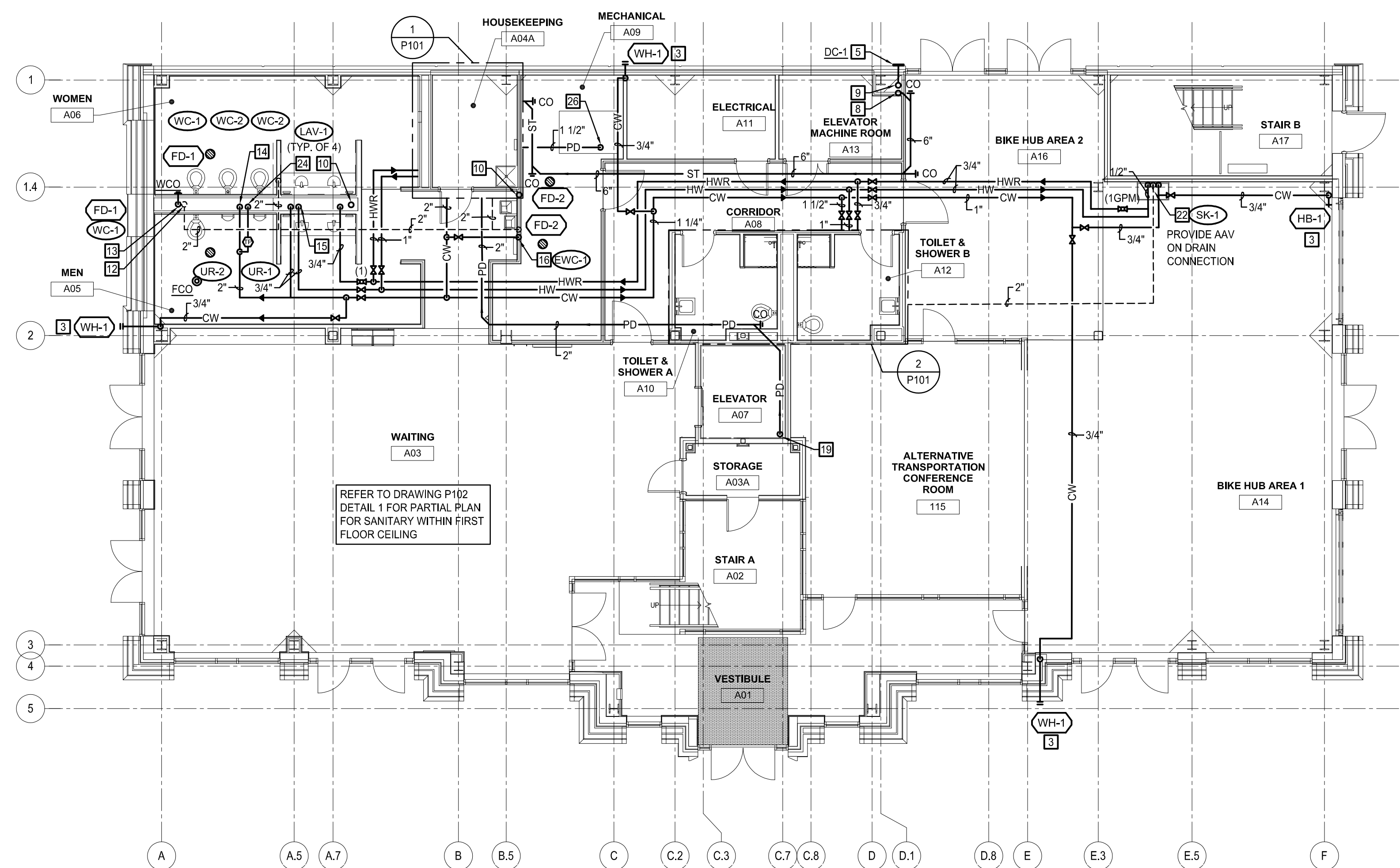
1. DO NOT INSTALL PLUMBING PIPING ABOVE ELECTRICAL PANELS. COORDINATE WITH ALL TRADES.



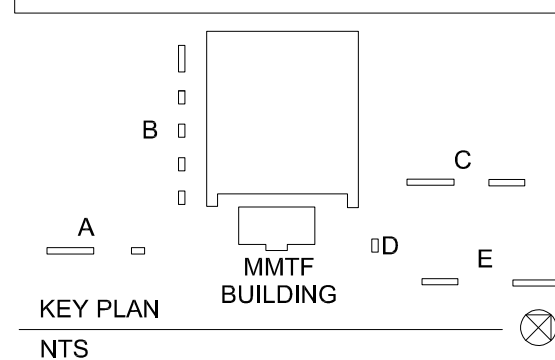
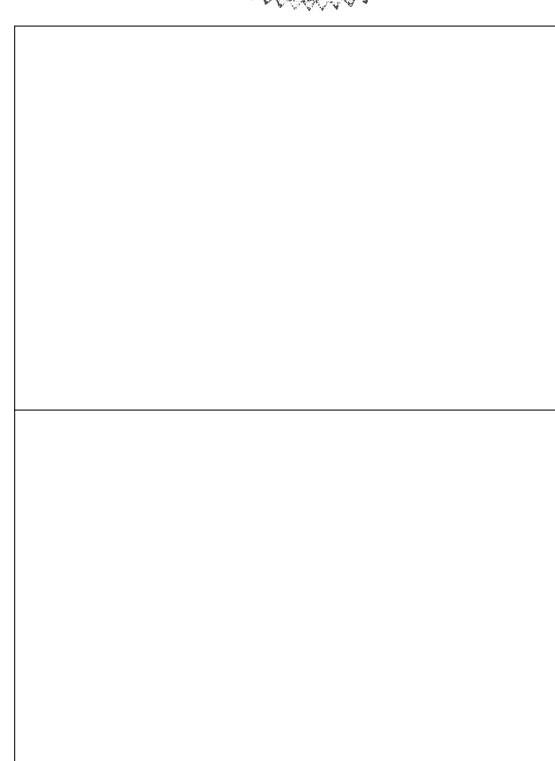
1 ENLARGED HOUSEKEEPING CLOSET PLUMBING PLAN
SCALE: 1/4" = 1'-0"



2 ENLARGED TOILET & SHOWER ROOM PLUMBING PLAN
SCALE: 1/4" = 1'-0"



3 PLUMBING FIRST FLOOR PLAN
SCALE: 1/8" = 1'-0"

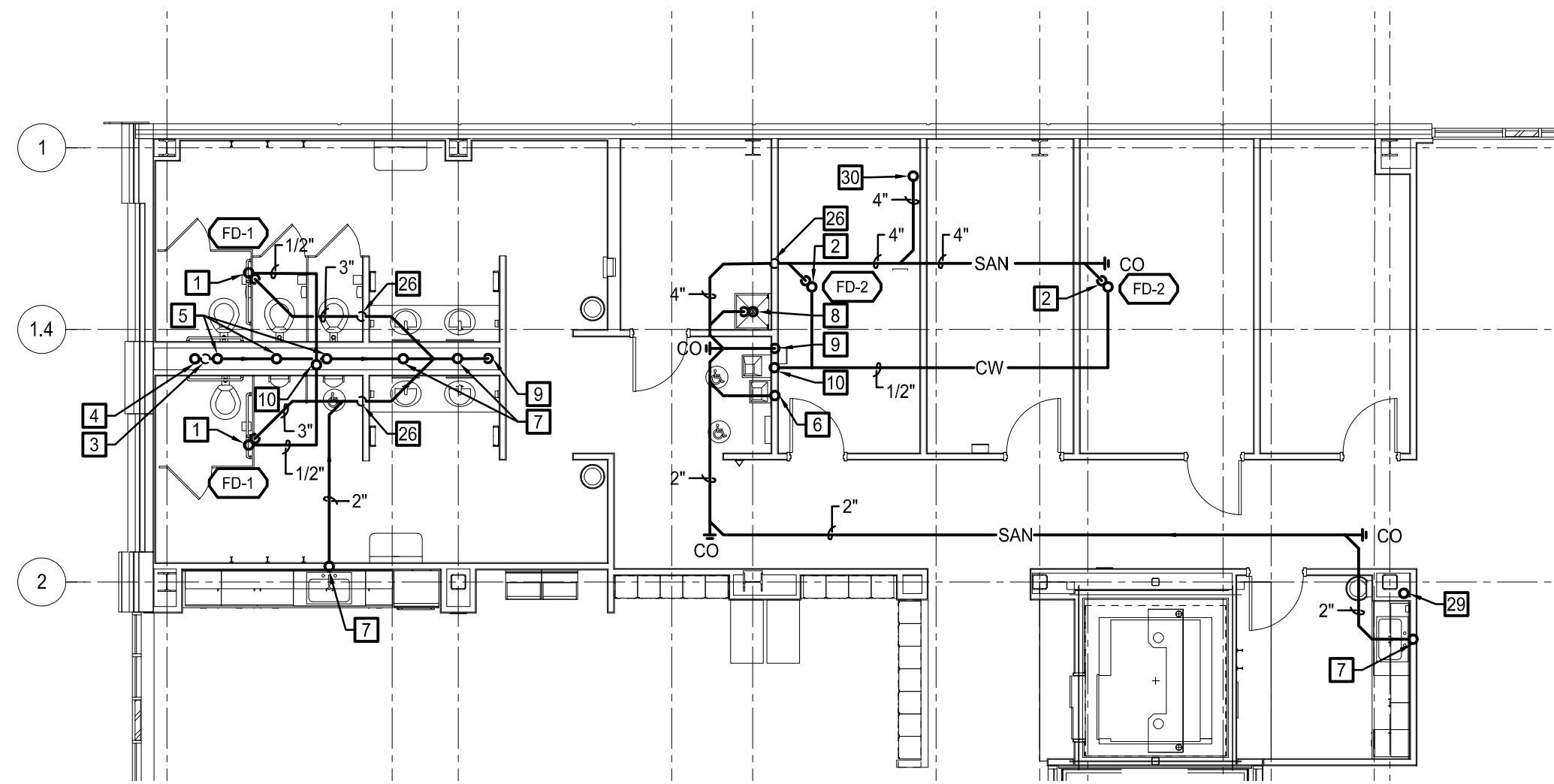


NO.	BY	BID SET REVISIONS	DATE
0		BID SET	09-15-2020

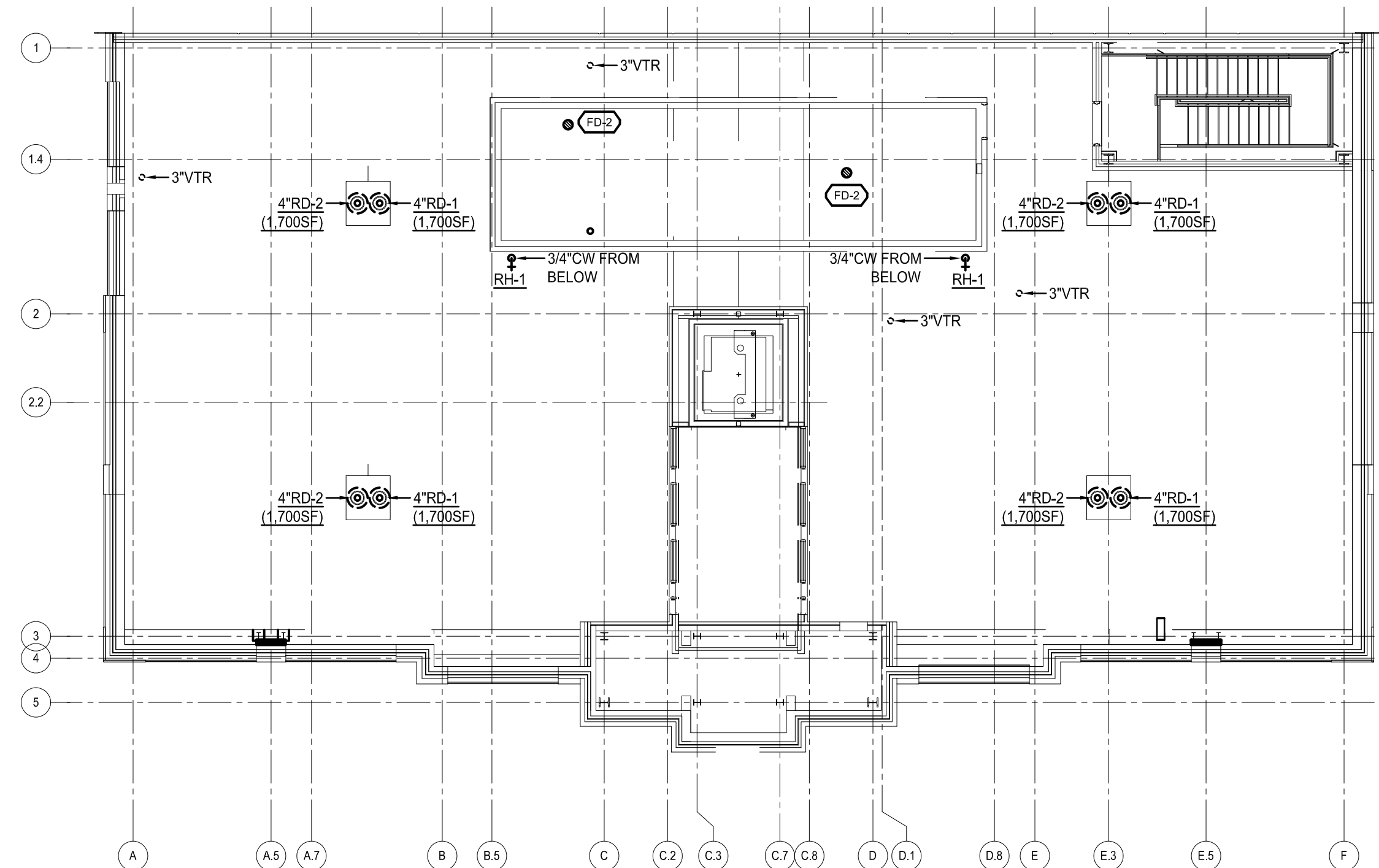
DWG. TITLE
PLUMBING FIRST FLOOR PLAN

DATE	SEPTEMBER 15, 2020
SCALE	AS NOTED
DWN.	TIP
CHK.	CRL
PROJ. No.	449803
DWG. No.	

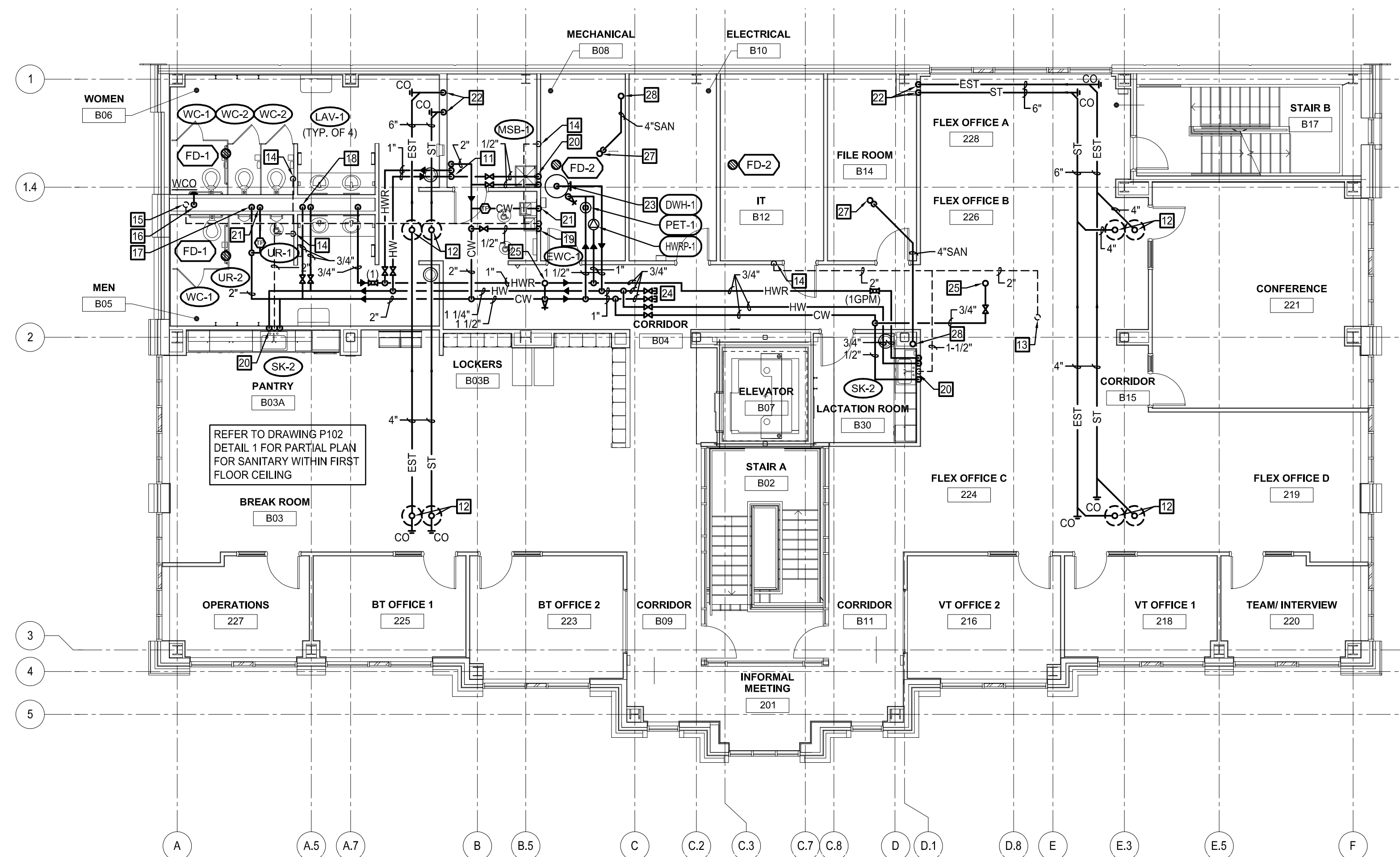
P101



1 PARTIAL SECOND FLOOR - BELOW FLOOR PLAN
SCALE: 1/8" = 1'-0"



3 PLUMBING ROOF PLAN
SCALE: 3/32" = 1'-0"



2 PLUMBING SECOND FLOOR PLAN
SCALE: 1/8" = 1'-0"

CONSTRUCTION NOTES:

1. PROVIDE 3" SAN PIPING WITH TRAP UP TO FD. PROVIDE 1/2" CW CONNECTION FOR TRAP PRIMER. REFER TO DETAIL 6/P201.
2. PROVIDE 4" SAN PIPING WITH TRAP UP TO FD. PROVIDE 1/2" CW CONNECTION FOR TRAP PRIMER. REFER TO DETAIL 6/P-201.
3. PROVIDE 3" V PIPING UP AND DOWN.
4. PROVIDE 4" SAN PIPING UP TO WCO.
5. PROVIDE 4" SAN PIPING UP TO WC.
6. PROVIDE 2" SAN PIPING UP TO EWC.
7. PROVIDE 2" SAN PIPING UP TO LAV / SINK.
8. PROVIDE 3" SAN PIPING WITH TRAP UP TO MSB.
9. PROVIDE 4" SAN PIPING DOWN.
10. PROVIDE 1/2" CW UP TO TRAP PRIMER VALVE. INSTALL INDIVIDUAL 1/2" CW FROM TRAP PRIMER DISTRIBUTION UNIT (WHERE APPLICABLE) TO EACH FLOOR DRAIN CONNECTION.
11. PROVIDE 2" CW, 1" HWR, AND 1" HW DOWN.
12. PROVIDE 4" ST/EST PIPING UP TO ROOF DRAIN. REFER TO ROOF PLAN DETAIL 3 ON P102.
13. PROVIDE 2" V PIPING UP TO 3" VTR. REFER TO ROOF PLAN DETAIL 3 ON P102.
14. PROVIDE 2" V PIPING DOWN.
15. PROVIDE 3" V PIPING UP AND DOWN.
16. PROVIDE 4" SAN PIPING DOWN. PROVIDE WCO 1'-6" A.F.F.
17. PROVIDE 2" CW DOWN TO 2" HEADER FEEDING FLUSH FIXTURES ONLY. INSTALL WATER HAMMER ARRESTOR TYPE 'C' ON CW PIPE BETWEEN LAST TWO FIXTURES.
18. PROVIDE 3/4" CW AND 3/4" HW DOWN TO LAVATORIES. PROVIDE 3/4" CW AND 3/4" HW DOWN TO LAVATORIES WITH 1/2" BRANCHES TO EACH FIXTURE. 3/4" HW TO COME BACK OUT OF CHASE AS 3/4" HWR. CONNECT 1/2" HW TO EACH LAV WITHIN 2 FEET OF FAUCET.
19. PROVIDE 1/2" CW AND 1 1/2" V PIPING DOWN TO EWC.
20. PROVIDE 1/2" CW & 3/4" HW, AND 2" V PIPING DOWN TO SINK. CONNECT 3/4" HWR TO HW WITHIN TWO FEET OF THE FAUCET.
21. PROVIDE 1/2" CW DOWN TO FLOOR DRAIN TRAP PRIMER CONNECTION.
22. PROVIDE 6" ST/EST PIPING DOWN.
23. PROVIDE DOMESTIC WATER HEATER AND ASSOCIATED EQUIPMENT AND PIPING. REFER TO DETAIL 1/P201.
24. PROVIDE 3/4" CW & HW PIPING VALVED AND CAPPED FOR FUTURE CONNECTION.
25. PROVIDE 3/4" CW UP TO ROOF HYDRANT. REFER TO ROOF PLAN 3 ON P102.
26. PROVIDE 2" V PIPING UP.
27. PROVIDE 4" SANITARY FROM FLOOR DRAIN ABOVE.
28. PROVIDE 4" SANITARY DOWN, 2" VENT UP, AND 3" VTR.
29. 4" SANITARY UP AND DOWN
30. 4" SANITARY UP

BLACKSBURG TRANSIT

BUILDING ADDRESS
1324 PERRY STREET, BLACKSBURG, VA 24060

MULTI-MODAL TRANSIT FACILITY

BID SET



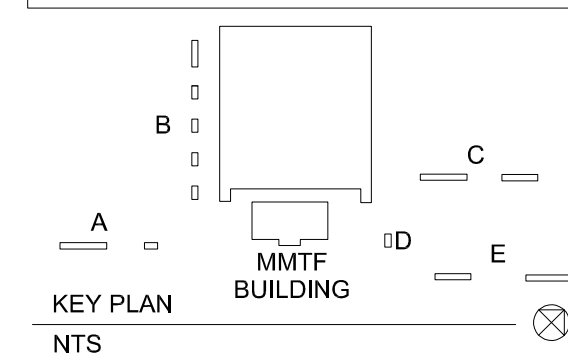
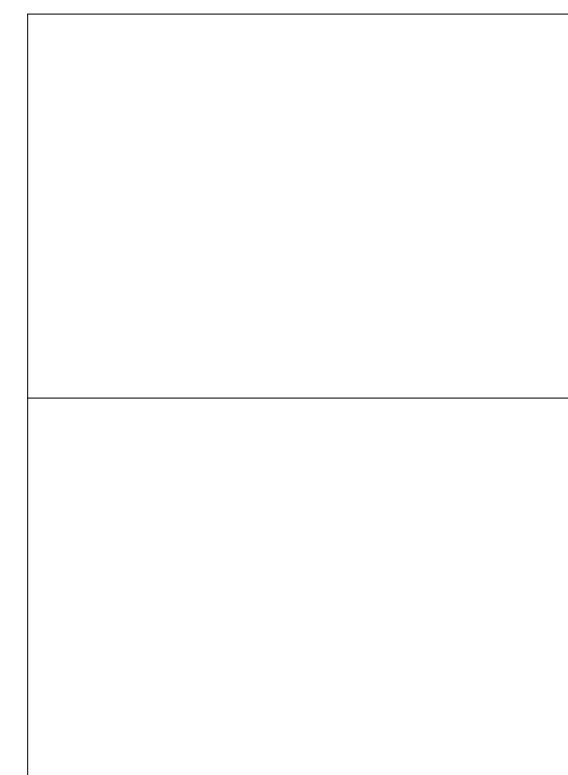
603 King Street, 4th Floor
Alexandria, VA 22314
www.wendelcompanies.com
p:703.299.8718 f:877.293.6335

ARCHITECTURE • ENGINEERING • PLANNING
ENERGY SERVICES • CONSTRUCTION MANAGEMENT



2206 South Main Street 540-552-0444
Blacksburg, VA 24060 www.daa.com
DAA Project No. B101728-05

NOTE:
THIS DOCUMENT AND THE IDEAS AND DESIGNS INCORPORATED HEREIN, AS AN INSTRUMENT OF PROFESSIONAL SERVICE, IS THE PROPERTY OF THE ARCHITECT AND ENGINEER AND IS NOT TO BE USED IN WHOLE OR IN PART FOR ANY OTHER PROJECT WITHOUT THE WRITTEN AUTHORIZATION OF THE ARCHITECT AND ENGINEER. UNAUTHORIZED ALTERATION OR ADDITION TO ANY SURVEY DRAWING, DESIGN, SPECIFICATION PLAN OR REPORT IS PROHIBITED IN ACCORDANCE WITH STATE LAW, CODE AND RULES.



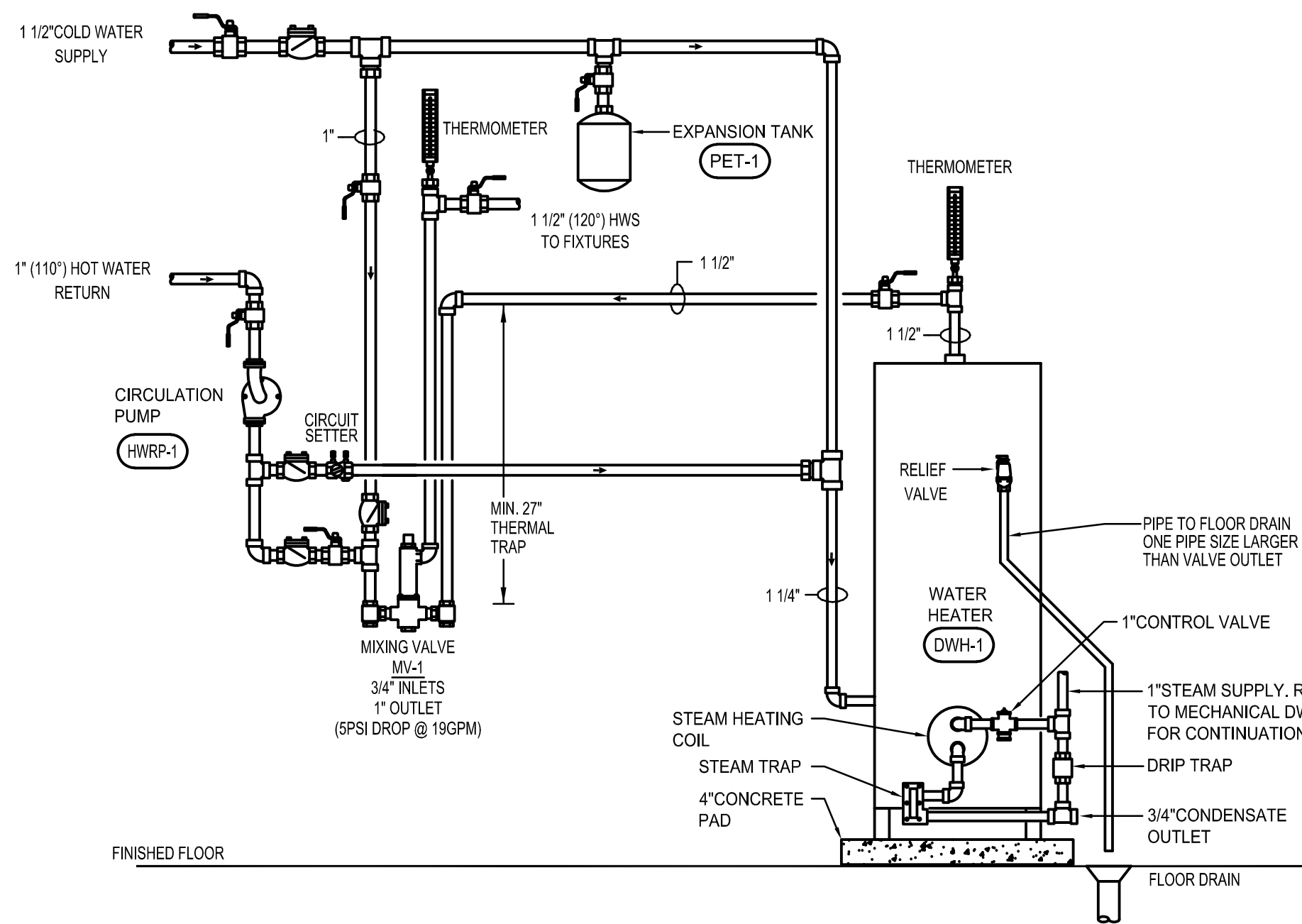
NO.	BY	BID SET REVISIONS	DATE
0		BID SET	09-15-2020

DWG. TITLE

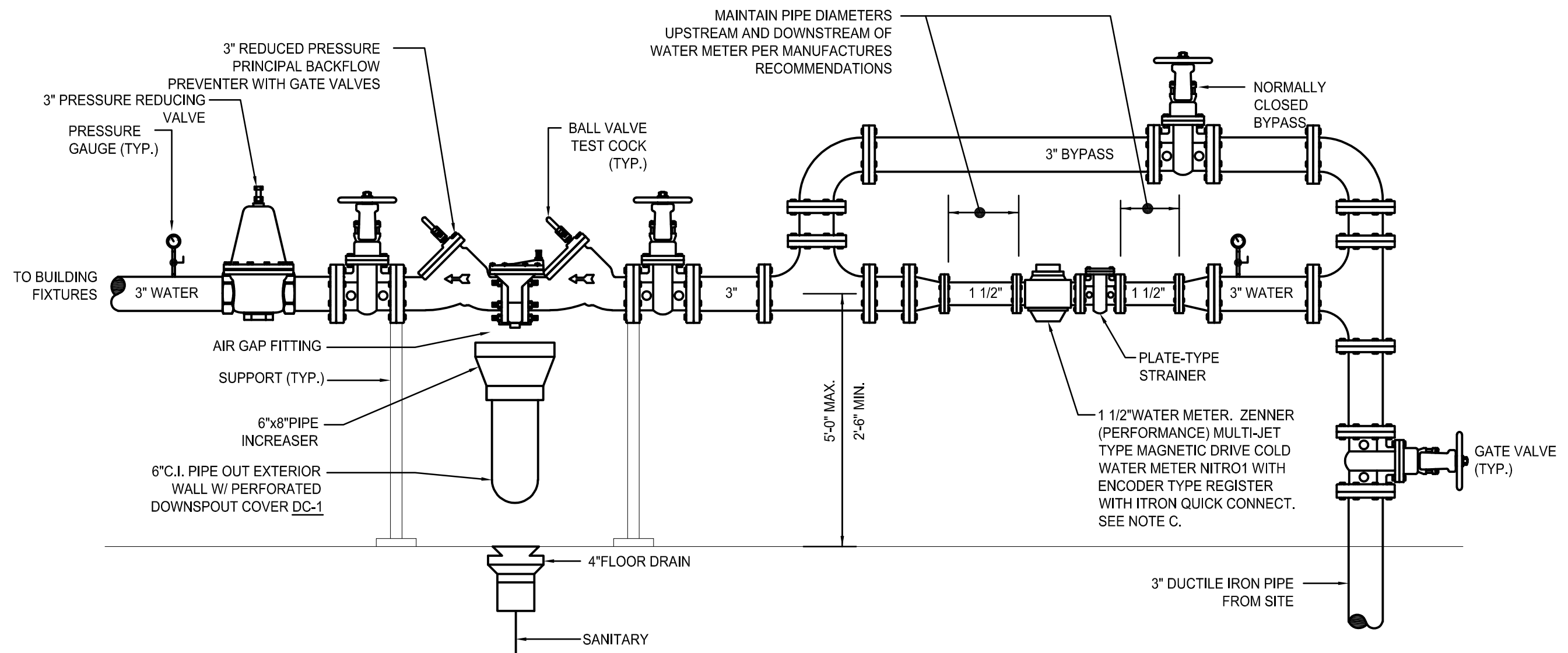
PLUMBING SECOND FLOOR AND ROOF PLANS

DATE	SEPTEMBER 15, 2020
SCALE	AS NOTED
DWN.	TIP
CHK.	CRL
PROJ. No.	449803
DWG. No.	

P102



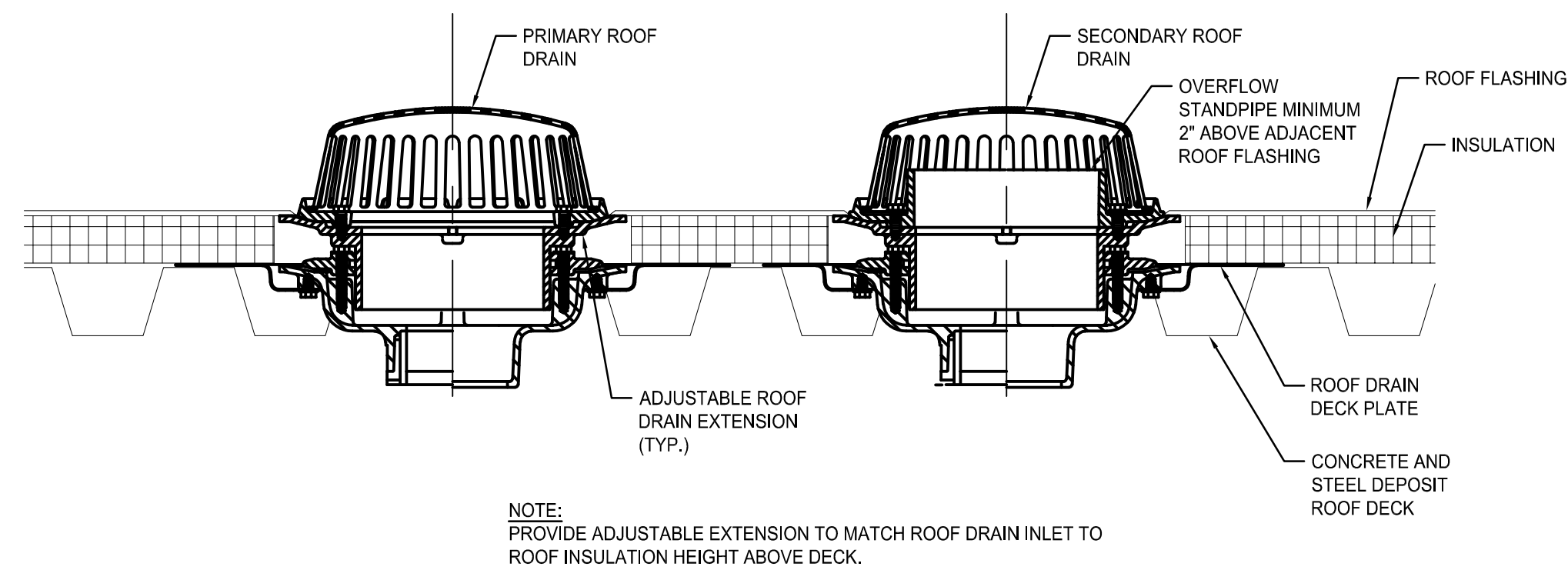
1 STEAM FIRED WATER HEATER DETAIL
SCALE: NONE



GENERAL NOTES:

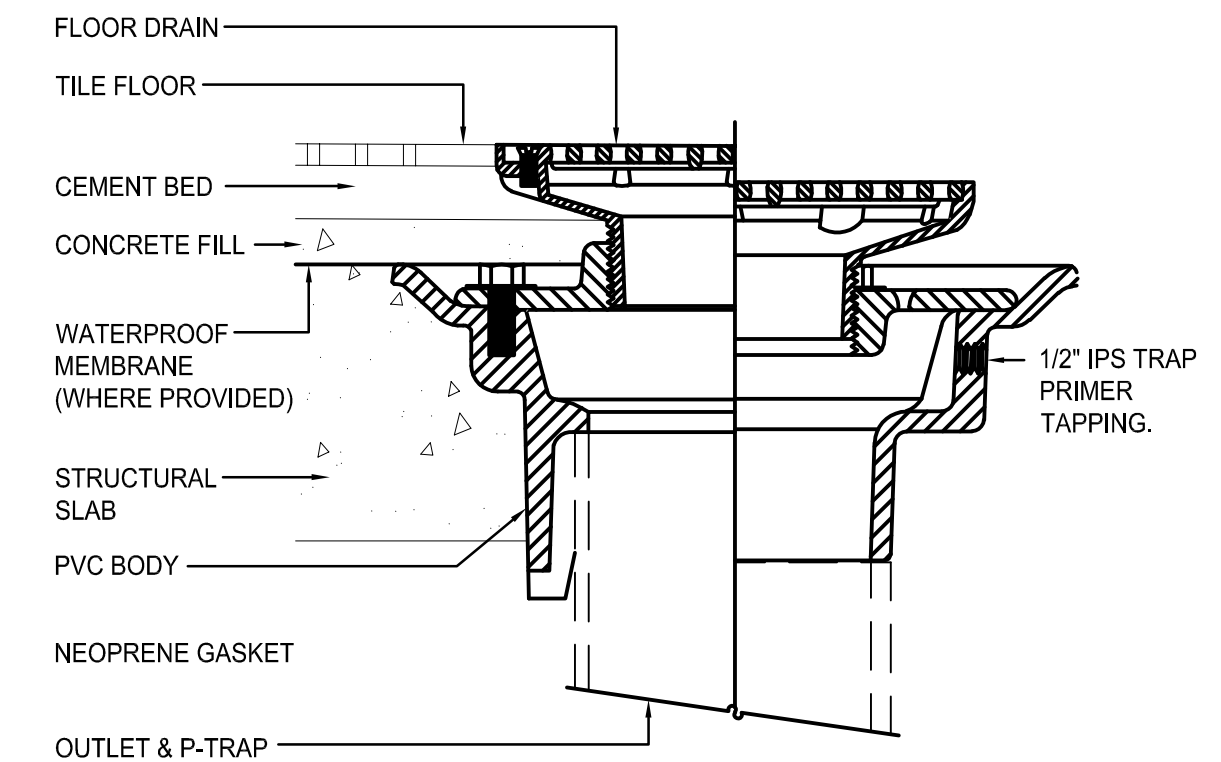
- A. MAINTAIN CODE REQUIRED AND MANUFACTURER'S RECOMMENDED CLEARANCES BETWEEN VALVE ASSEMBLIES AND WALLS OR OTHER OBSTRUCTIONS. COORDINATE LOCATION SHOWN ON PLAN WITH INSTALLED CONDITIONS.
 1. A MINIMUM OF 1'-0" OF CLEAR SPACE SHALL BE MAINTAINED ABOVE THE ASSEMBLY TO ALLOW FOR SERVICING CHECK VALVES.
 2. A MINIMUM OF 2'-6" OF CLEAR SPACE SHALL BE MAINTAINED BETWEEN THE FRONT SIDE OF THE DEVICE AND THE NEAREST WALL OR OBSTRUCTION.
 3. A MINIMUM OF 0'-8" OF CLEAR SPACE SHALL BE MAINTAINED FROM THE BACK SIDE OF THE DEVICE TO THE NEAREST WALL OR OBSTRUCTION. THIS CLEARANCE MAY NEED TO BE INCREASED FOR MODELS THAT HAVE SIDE MOUNTED TEST COCKS OR RELIEF VALVES THAT FACE THE BACK WALL.
- B. FOLLOW MANUFACTURER'S INSTALLATION INSTRUCTIONS EXPLICITLY.
- C. METER SHALL HAVE AN ITRON ENCODER FOR ZENNER (PERFORMANCE) METERS. ENCODER SHALL BE AN ITRON 60W WITH AN INLINE CONNECTOR, PART #ERW-0771-202, UTILITY ID#181 FOR VIRGINIA POLYTECHNIC INSTITUTE
- D. REFER TO SPECIFICATION SECTION 221119.

2 WATER SERVICE DETAIL
SCALE: NONE

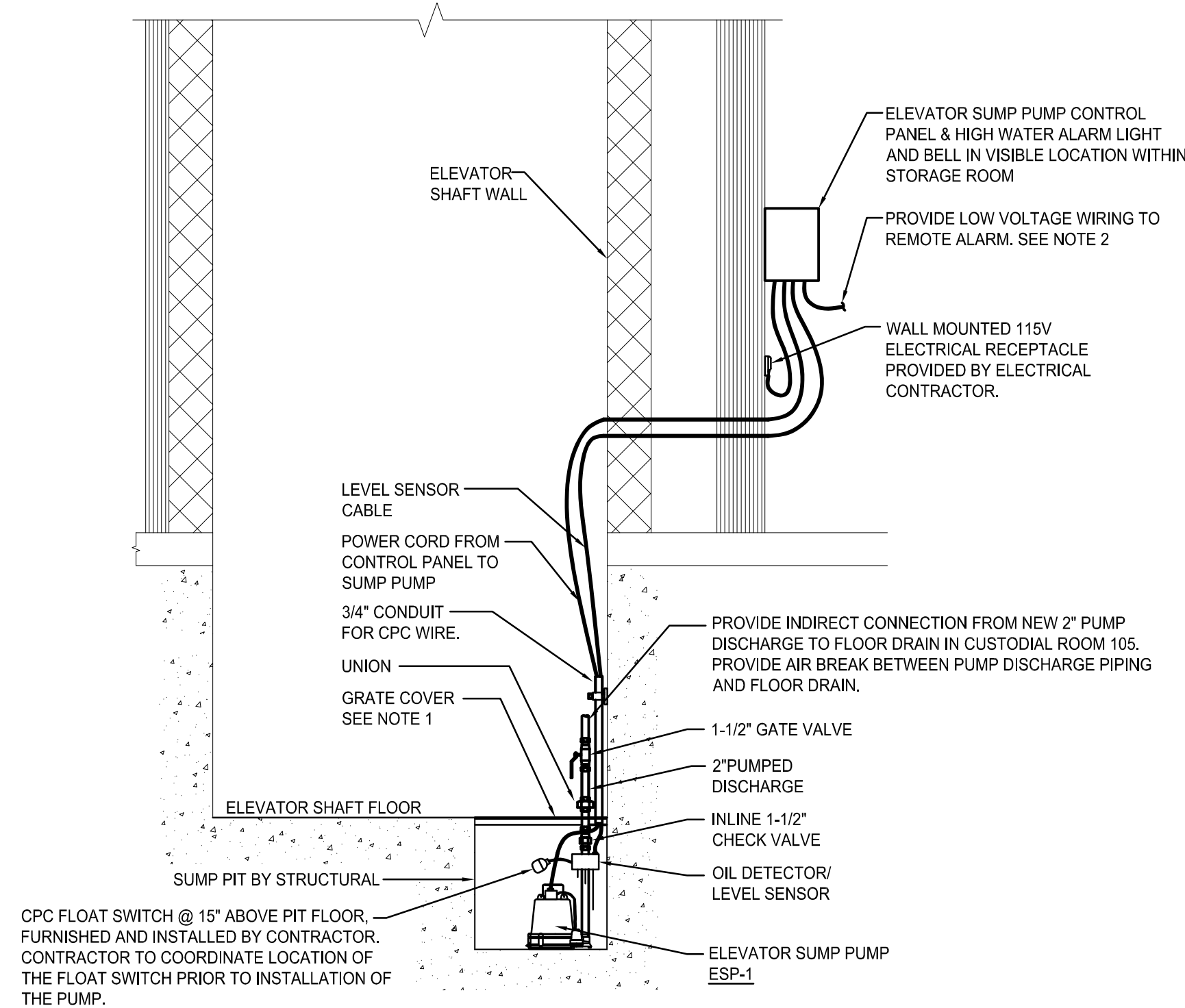


NOTE: PROVIDE ADJUSTABLE EXTENSION TO MATCH ROOF DRAIN INLET TO ROOF INSULATION HEIGHT ABOVE DECK.

4 COMBINATION PRIMARY/SECONDARY ROOF DRAIN INSTALLATION DETAIL
SCALE: NONE

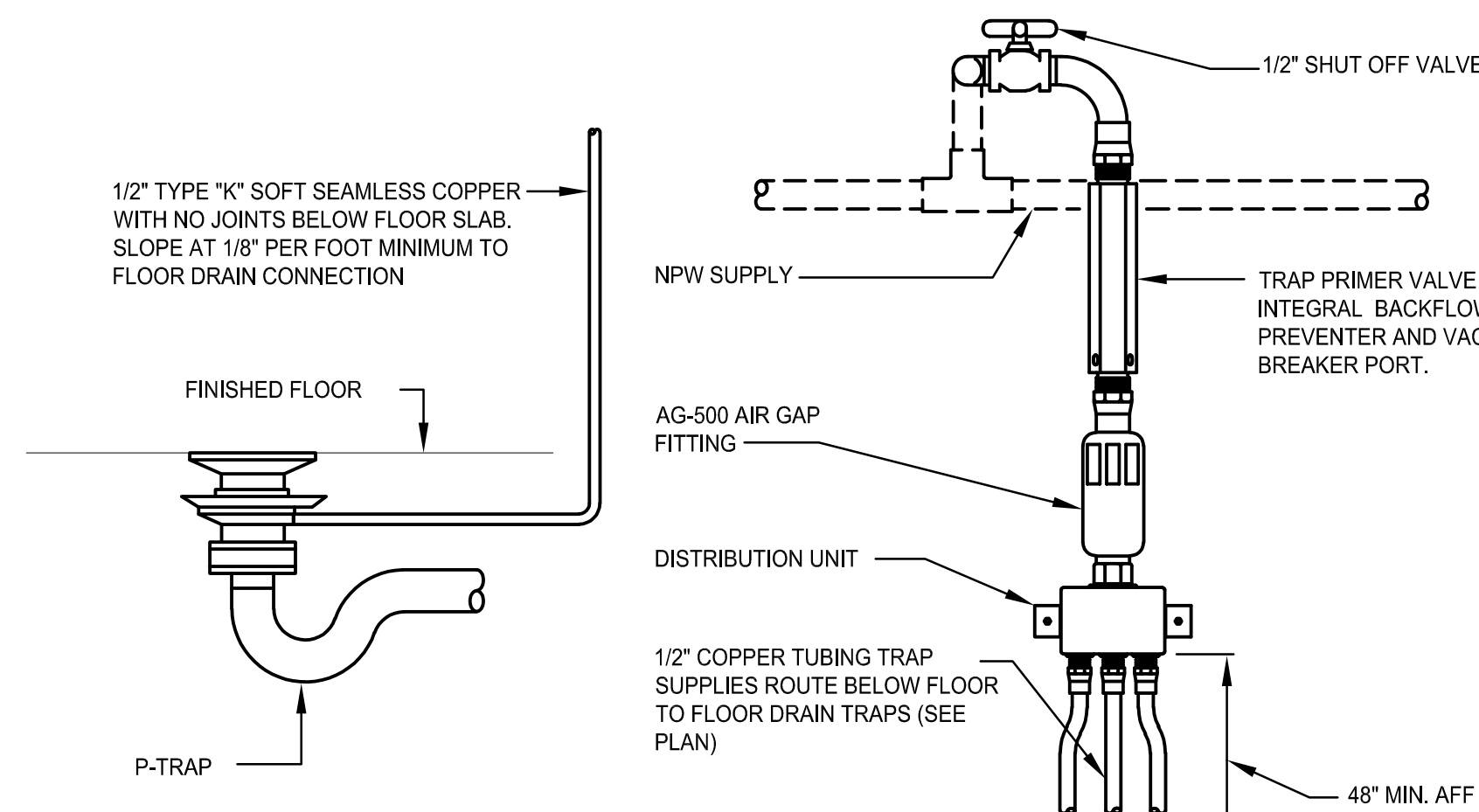


5 FLOOR DRAIN DETAIL
SCALE: NONE

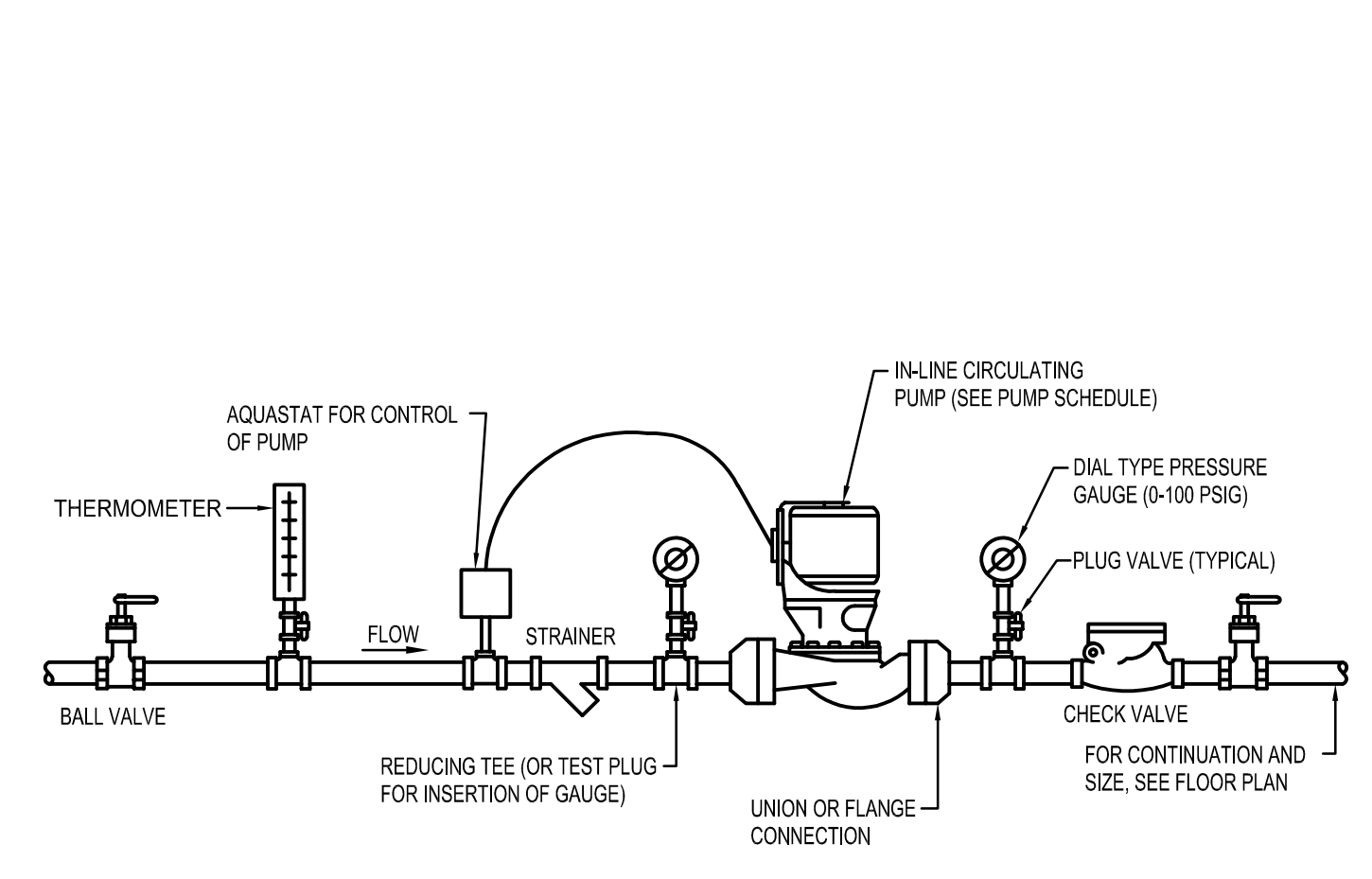


- NOTES:
1. COVER SHALL BE FABRICATED OF 1/4" THICK GALVANIZED STEEL DIAMOND PLATE FLUSH WITH ELEVATOR SHAFT FLOOR, WELD 3"x3"x1/4" GALVANIZED STEEL ANGLES TO TWO SIDES OF DIAMOND PLATE. HOT DIPPED AFTER FABRICATION. NOTCH OUT COVER TO ALLOW FOR PIPE RISER AND WATER TO ENTER PIT. CONTRACTOR SHALL FIELD VERIFY SUMP PIT DIMENSIONS.
 2. PROVIDE LOW VOLTAGE WIRING FROM ELEVATOR SUMP PUMP CONTROLLER TO REMOTE ALARM IN CUSTODIAL ROOM 110. PROVIDE POWER TO REMOTE ALARM FROM WALL MOUNTED 115V ELECTRICAL RECEPTACLE. PROVIDE LOW VOLTAGE WIRING FROM REMOTE ALARM TO BMS SYSTEM.

3 ELEVATOR SUMP PUMP DETAIL
SCALE: NONE



6 TRAP PRIMER DETAIL
SCALE: NONE



7 IN-LINE CIRCULATING PUMP DETAIL
SCALE: NONE

BLACKSBURG TRANSIT

BUILDING ADDRESS
1324 PERRY STREET, BLACKSBURG, VA 24060

MULTI-MODAL TRANSIT FACILITY
BID SET



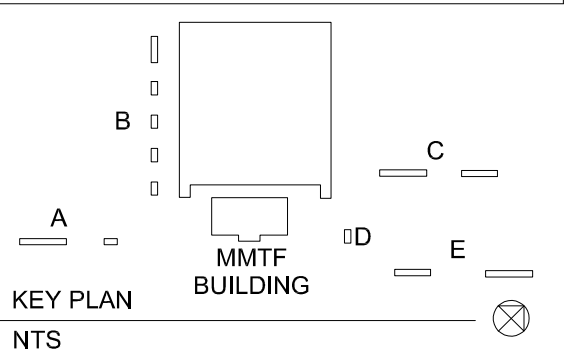
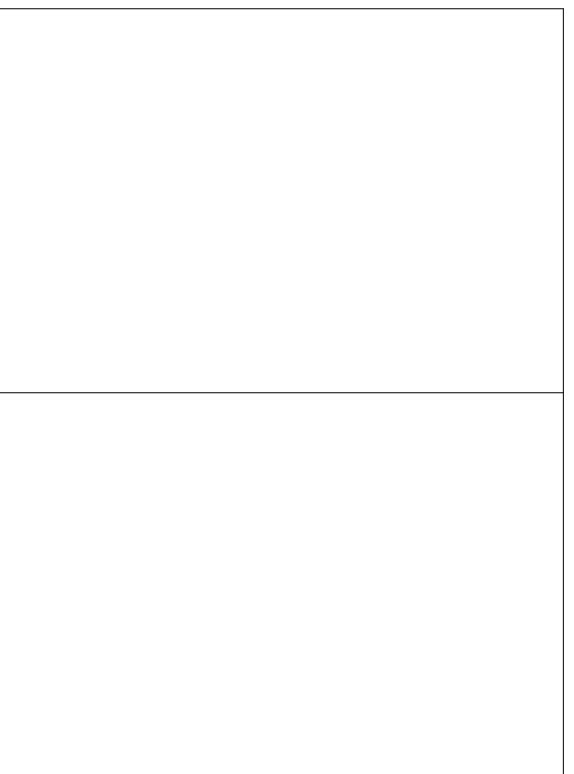
603 King Street, 4th Floor
Alexandria, VA 22314
www.wendelcompanies.com
p:703.299.8718 f:877.293.6335

ARCHITECTURE • ENGINEERING • PLANNING
ENERGY SERVICES • CONSTRUCTION MANAGEMENT



2206 South Main Street 540-552-0444
Blacksburg, VA 24060 www.daa.com
DAA Project No. B10172B-05

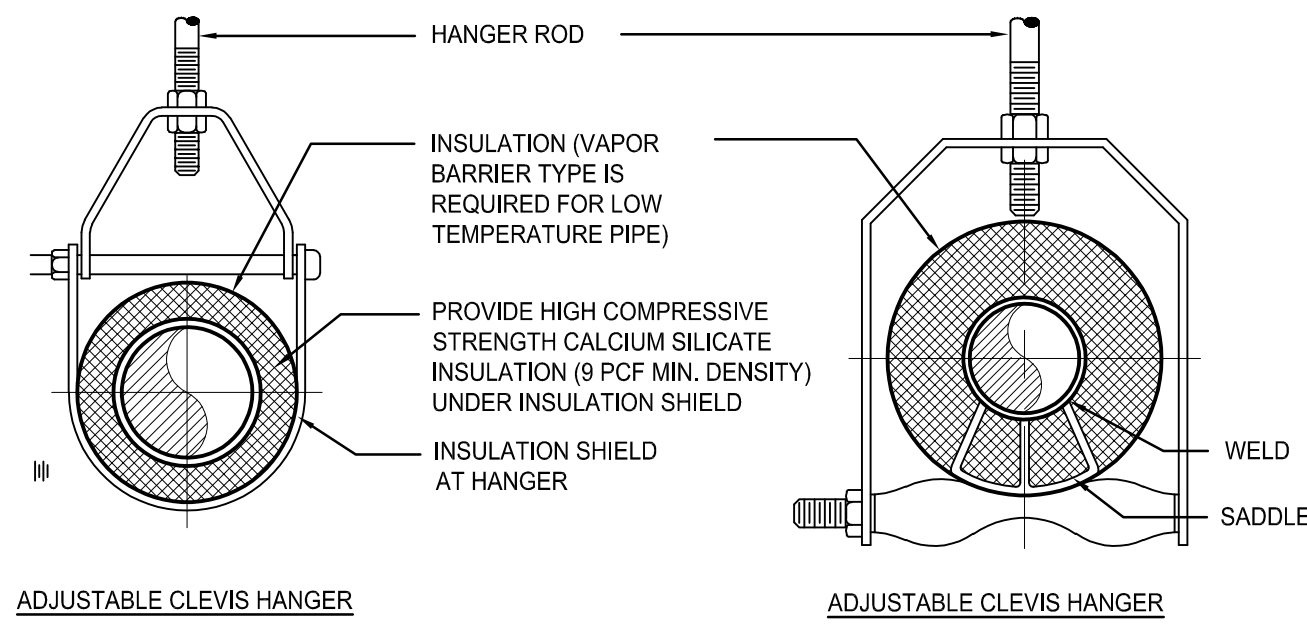
NOTE:
THIS DOCUMENT AND THE IDEAS AND DESIGNS INCORPORATED HEREIN, AS AN INSTRUMENT OF PROFESSIONAL SERVICE, IS THE PROPERTY OF THE ARCHITECT AND ENGINEER AND IS NOT TO BE USED IN WHOLE OR IN PART, FOR ANY OTHER PROJECT WITHOUT THE WRITTEN AUTHORIZATION OF THE ARCHITECT AND ENGINEER. UNAUTHORIZED ALTERATION OR ADDITION TO ANY SURVEY DRAWING, DESIGN SPECIFICATION PLAN OR REPORT IS PROHIBITED IN ACCORDANCE WITH STATE LAW, CODE AND RULES.



NO.	BY	BID SET REVISIONS	DATE
0			09-15-2020

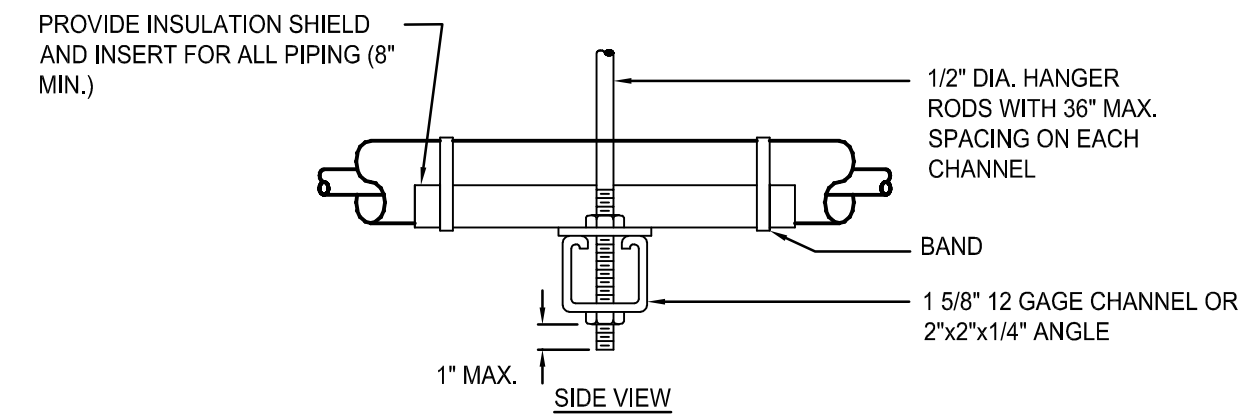
DWG. TITLE
PLUMBING DETAILS

DATE	TIP	CHK.	CRL
SEPTEMBER 15, 2020			
SCALE	AS NOTED		
PROJ. No.	449803		
DWG. No.			



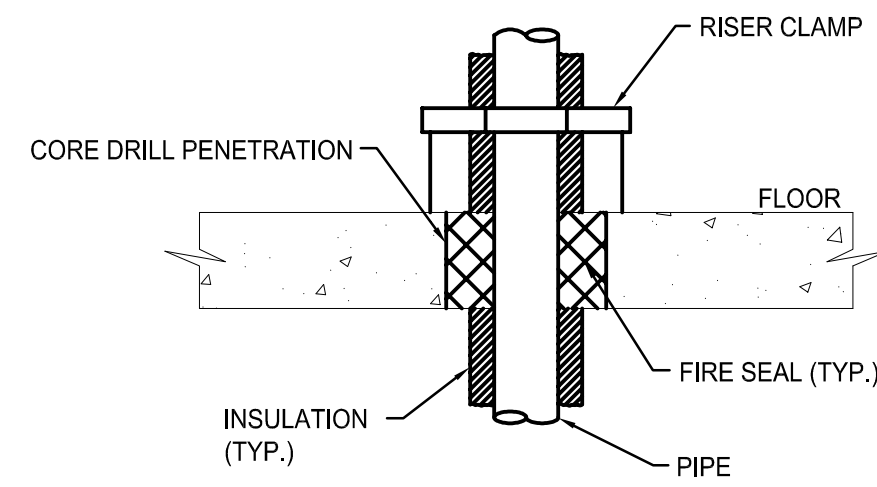
ADJUSTABLE CLEVIS HANGER

ADJUSTABLE CLEVIS HANGER



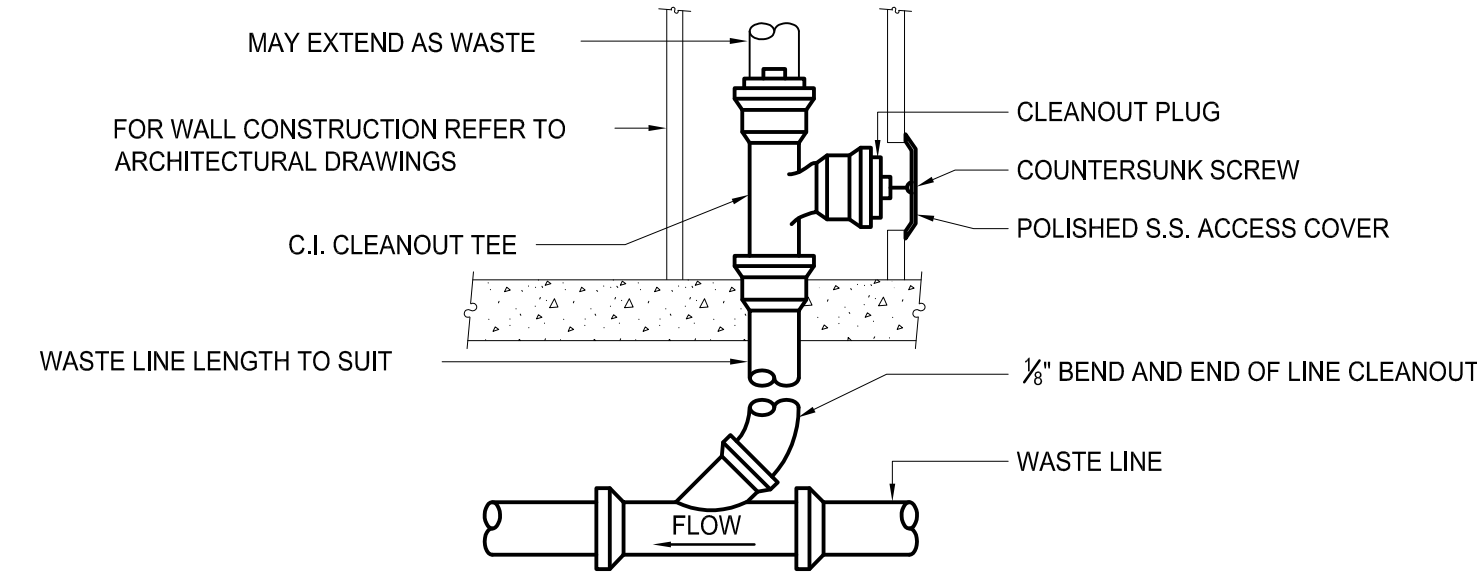
TRAPEZE HANGER FOR UP TO 1000 LB. UNIFORM LOAD

1 TYPICAL PIPE HANGER DETAIL
SCALE: NOT TO SCALE

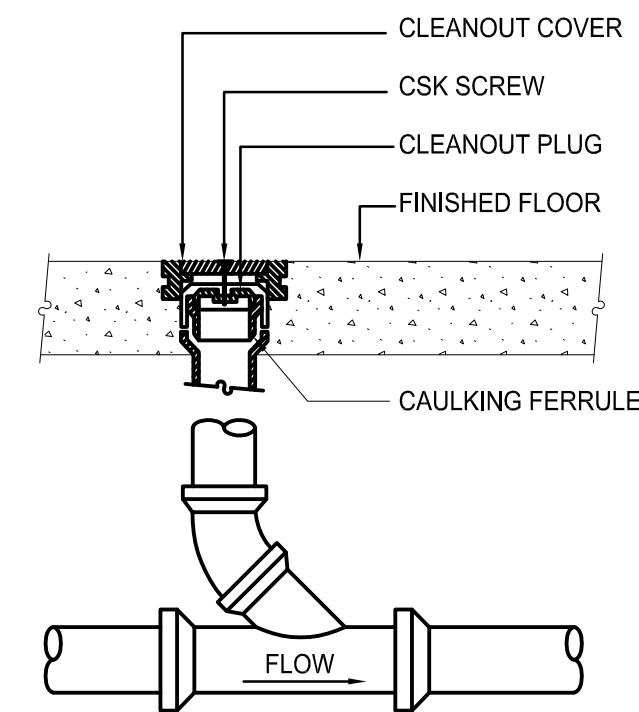


- NOTE:**
1. PROVIDE SLEEVE 2 PIPE SIZES LARGER THAN PIPE. 2. MOUNT SLEEVE FLUSH TO BOTH SIDES OF SLAB.
 2. EXTEND SLEEVE TWO INCHES ABOVE FLOOR IN MECHANICAL ROOMS FOR A WATER STOP.

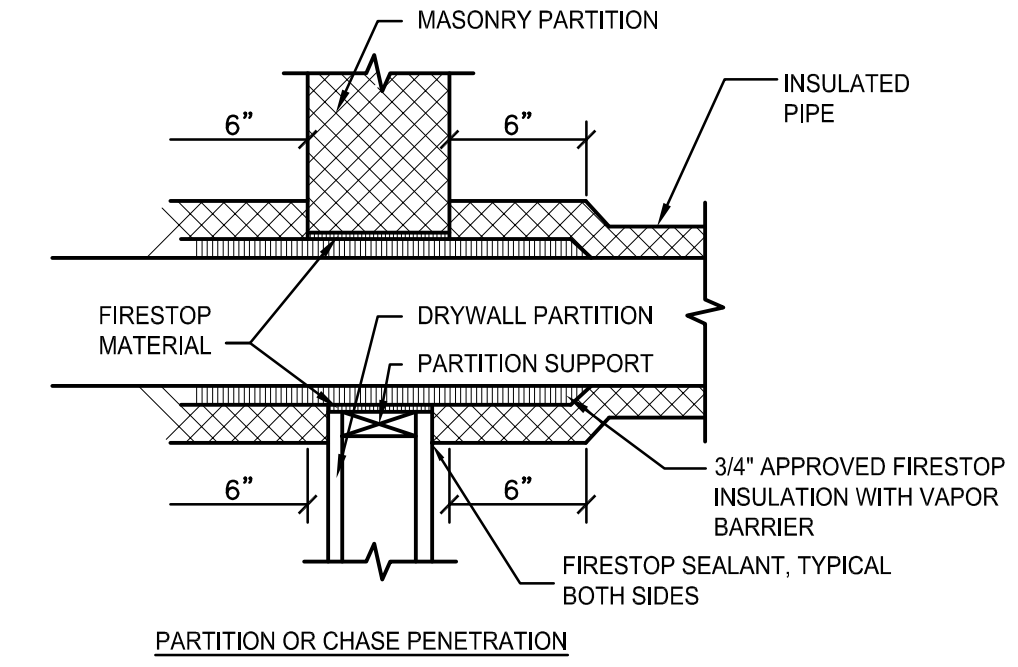
5 FLOOR PENETRATION DETAIL
SCALE: NOT TO SCALE



2 WALL CLEANOUT DETAIL
SCALE: NOT TO SCALE



3 FLOOR CLEANOUT DETAIL
SCALE: NOT TO SCALE



- NOTE:**
1. WHERE WALL IS NOT FIRE RATED PIPE INSULATION SHOULD CONTINUE THROUGH SLEEVE OPENING AND GROUT SPACE BETWEEN OUTSIDE OF INSULATION AND INSIDE OF SLEEVE.

4 WALL PIPE PENETRATION DETAIL
(FOR FIRE RATED AND NON RATED WALLS)
SCALE: NOT TO SCALE

BLACKSBURG TRANSIT

BUILDING ADDRESS
1324 PERRY STREET, BLACKSBURG, VA 24060

**MULTI-MODAL TRANSIT FACILITY
BID SET**



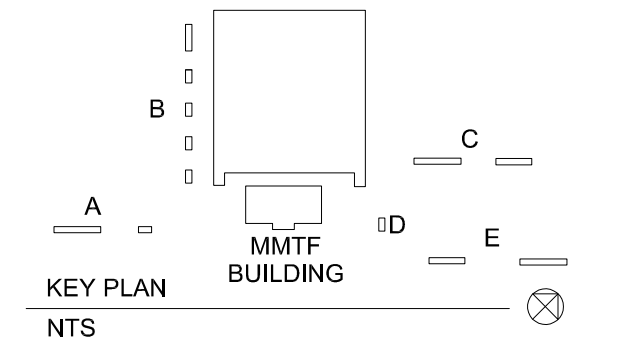
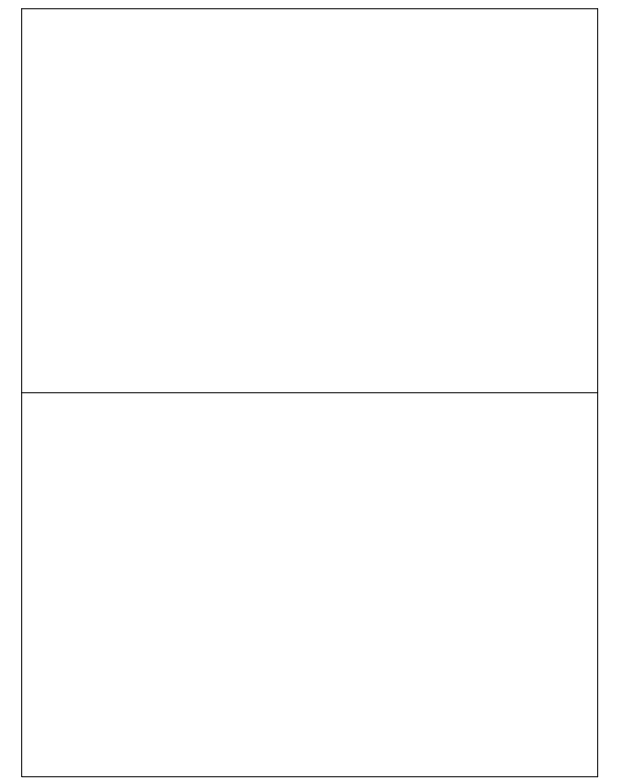
603 King Street, 4th Floor
Alexandria, VA 22314
www.wendelcompanies.com
p:703.299.8718 f:877.293.6335

ARCHITECTURE • ENGINEERING • PLANNING
ENERGY SERVICES • CONSTRUCTION MANAGEMENT



2206 South Main Street 540-552-0444
Blacksburg, VA 24060 www.daa.com
DAA Project No. B10172B-05

NOTE:
THIS DOCUMENT AND THE IDEAS AND DESIGNS INCORPORATED HEREIN, AS AN INSTRUMENT OF PROFESSIONAL SERVICE, IS THE PROPERTY OF THE ARCHITECT AND ENGINEER AND IS NOT TO BE USED IN WHOLE OR IN PART FOR ANY OTHER PROJECT WITHOUT THE WRITTEN AUTHORIZATION OF THE ARCHITECT AND ENGINEER. UNAUTHORIZED ALTERATION OR ADDITION TO ANY SURVEY DRAWING, DESIGN SPECIFICATION, PLAN OR REPORT IS PROHIBITED IN ACCORDANCE WITH STATE LAW, CODE AND RULES.



NO.	BY	REVISIONS	DATE
0		BID SET	09-15-2020

DWG. TITLE

**PLUMBING
DETAILS**

DATE SEPTEMBER 15, 2020

SCALE AS NOTED

DWN. TIP CHK. CRL

PROJ. No. 449803

DWG. No.

P202

HOT WATER RETURN PUMP SCHEDULE (HWRP)													
PLAN DESIGNATION	MANUFACTURER MODEL NO.	SERVICE	LOCATION	TEMPERATURE (DEG. °F)	TOTAL HEAD (FT)	FLOW (GPM)	POWER (HP)	RPM	ELECTRICAL DATA				NOTES
									VOLTS	PHASE	HERTZ	F.LAMPS	
HWRP-1	TACO 008-BC6	DOMESTIC WATER	MECH ROOM	120	12	6	1/25	3250	115	1	60	0.84	1,2,3
NOTES: 1. BRONZE BODY CONSTRUCTION, NON FERROUS IMPELLER, 225°F MAX OPERATING TEMPERATURE, 125 PSI MAX WORKING PRESSURE. 2. PROVIDE AQUASTAT AND AUTOMATIC TIMER KIT. 3. PROVIDE THERMAL ELECTRICAL DISCONNECT.													

PLUMBING EXPANSION TANK SCHEDULE (PET)											
PLAN DESIGNATION	MANUFACTURER MODEL NO.	LOCATION	TANK TYPE	TANK VOLUME (GAL.)	ACCEPTANCE VOLUME (GAL.)	LENGTH (IN.)	DIAMETER (IN.)	INLET (IN.)	FULL WEIGHT (LBS)	NOTES	
PET-1	WILKINS WTTA-12	MECH. ROOM O&M BLDG	BLADDER	5	3.3	14	12	3/4	28	ASME RATED	

STEAM FIRED DOMESTIC WATER HEATER WITH ELECTRIC BACKUP SCHEDULE (DWH)												
PLAN DESIGNATION	MANUFACTURER MODEL NO.	TYPE	LOCATION	STORAGE CAPACITY (GAL.)	STEAM INLET PRESSURE	GPH RECOVERY @ 100° F	CONTROL VALVE SIZE	ELECTRICAL DATA			NOTES	
								KW	VOLTS/PHASE	HERTZ		
DWH-1	HUBBELL MODEL PS80SLD5-20T4	TANK, CEMENT LINED	MECH RM	80	5	118	1"	20	480/3	60	1	
NOTES: 1. PROVIDE THE FOLLOWING STANDARD AND OPTIONAL EQUIPMENT: -ELECTRIC BACKUP HEATING COIL -COMBINATION TEMPERATURE AND PRESSURE GAUGE -DOUBLE WALL COPPER TUBE HEATING COIL -SOLENOID SAFETY SYSTEM WHICH CLOSES STEAM SUPPLY IF OVERHEATING OCCURS -ASME PRESSURE/TEMPERATURE RELIEF VALVE -STEAM PRESSURE REDUCING VALVE -F&T STEAM TRAP WITH STRAINER -ELECTRIC DISCONNECT SWITCH -FACTORY APPLIED INSULATED JACKET 2. PROVIDE PLASTIC LAMINATED SIGN STATING: WARNING WATER HEATER HAS ELECTRIC HEATING ELEMENT. DISCONNECT POWER PRIOR TO DRAINING OR WORKING ON HEATER. ATTACH SIGN TO WATER HEATER IN VISIBLE LOCATION. 3. SET WATER HEATER AT AN ELEVATION THAT WILL ALLOW STEAM CONDENSATE TO RETURN TO THE CONDENSATE TANK.												

ELEVATOR SUMP PUMP SCHEDULE (ESP)												
DESIGNATION	MANUFACTURER MODEL NO.	SERVICE	CAPACITY (GPM)	TOTAL HEAD (FT)	HP	RPM	ELECTRICAL DATA				NOTES	
							VOLTS	PHASE	AMPS	HERTZ		
ESP-1	LIBERTY ELV290	ELEVATOR PIT	50	20	3/4	3450	115	1	10.4	60	1-4	
NOTES: 1. SUMP PUMP SHALL HAVE OIL MINDER CONTROLS FEATURING: - NEMA 4X WEATHERTIGHT ENCLOSURE - STAINLESS STEEL SENSOR PROBE - SINGLE DIRECT PLUG-IN SOURCE - ALARM, LIGHT, AND CONTROL PANEL CIRCUIT (CPC) 2. INSTALL PER MANUFACTURERS INSTRUCTIONS. 3. TIE CONTROLS INTO BMS SYSTEM. 4. PROVIDE ALL WIRING REQUIRED FOR OPERATION.												

SUMP PUMP SCHEDULE (SP)												
DESIGNATION	MANUFACTURER MODEL NO.	SERVICE	CAPACITY (GPM)	TOTAL HEAD (FT)	HP	RPM	ELECTRICAL DATA				NOTES	
							VOLTS	PHASE	AMPS	HERTZ		
SP-1	LIBERTY HT41A-2	MECHANICAL ROOM PIT	10	15	4/10	3450	115	1	12	60	1-4	
NOTES: 1. SUMP PUMP RATED FOR WATER TEMPERATURES UP TO 200°F. 2. PROVIDE FLOAT WITH PIGGY BACK SWITCH AND 25 FOOT CORD. 3. INSTALL PER MANUFACTURERS INSTRUCTIONS. 4. PROVIDE PLUG-IN TYPE HIGH WATER ALARM SUMP ALARM MODEL SA-120V-2L16F WITH 16 FOOT CORD.												

PLUMBING FIXTURE / SPECIALTY SCHEDULE											
FIXTURE NO.	DESCRIPTION	MANUFACTURER & MODEL	PIPING CONNECTIONS				ACCESSORIES	REMARKS			
			S/W	VENT	C.W.	H.W.					
DC-1	DOWNSPOUT COVER (AT EMERGENCY OVERFLOW DRAIN OUTLETS), STAINLESS STEEL, PERFORATED HINGED COVER, FLUSH TO WALL	MIFAB R1960-F	-	-	-	-	-	-			
EW-1	ADA COMPLIANT, 8" LEVEL ELECTRIC WATER COOLER WITH FILTERED BOTTLE FILLING STATION, #14 GAUGE TYPE 304 SS	ELKAY EZH20 LZSTL8WSSP	2"	1-1/2"	1/2"	-	WALL MOUNTING PLATE, VANDAL RESISTANT BUBBLER, 3 PACK REPLACEMENT FILTERS	115V, 4.2 AMP, PLUG IN TO DUAL OUTLET			
FCO	FLOOR CLEAN OUT W/ ROUND ADJUSTABLE NICKEL BRONZE TOP & SECONDARY PLUG	MIFAB C1100-R	VARIABLES	-	-	-	-	SIZE TO MATCH SANITARY LINE SIZE, MAXIMUM 4"			
FD-1	FLOOR DRAIN, 6" NICKEL BRONZE STRAINER, TRAP PRIMER CONNECTION	MIFAB F1100-7-1	VARIABLES	-	-	-	TRAP PRIMER	-			
FD-2	FLOOR DRAIN, 7" DUCTILE IRON STRAINER AND SEDIMENT BUCKET TRAP PRIMER CONNECTION	MIFAB F1300C-5-7	VARIABLES	-	-	-	TRAP PRIMER	-			
FD-3	FLOOR DRAIN, 5" Ø STAINLESS STEEL STRAINER, TRAP PRIMER CONNECTION	MIFAB F1000-C-3-7	2"	-	-	-	TRAP PRIMER	-			
FD-4	FLOOR DRAIN, 5" Ø HUB OPENING FOR ELEVATOR PUMPED DISCHARGE, TRAP PRIMER CONNECTION	MIFAB F1000-C-DD	4"	-	-	-	TRAP PRIMER	-			
HB-1	HOSE BIBB, ROUGH BRASS FINISH, ANTI-SIPHON VACUUM BREAKER, CAST IRON WHEEL	MIFAB MHY-9041	-	-	3/4"	-	-	-			
LAV-1	OVAL LAVATORY, VITREOUS CHINA, DROP-IN, OVERFLOW, SINGLE FAUCET HOLE, 20 1/8"x16 1/2" WIDE	KOHLER K-2699	2"	1-1/2"	1/2"	1/2"	FAUCETS, THERMOSTATIC MIXING VALVE (ASSE 1070), SS STRAINER, SUPPLIES, STOPS, TRAP, OFFSET TAILPIECE ESCUTCHEON PLATE	SENSOR FAUCET, WATER TURBINE POWERED W/ CONTROLLER FOR 0.09GPC, TOTO MODEL TEL105-D10E, TMV TOTO MODEL TLM10			
LAV-2	ADA COMPLIANT WALL MOUNTED LAVATORY, VITREOUS CHINA, OVERFLOW, SINGLE HOLE CENTER, 20 3/4"x18 1/4" WIDE	KOHLER K-2032	2"	1-1/2"	1/2"	1/2"	FAUCETS, THERMOSTATIC MIXING VALVE (ASSE 1070), SS STRAINER, SUPPLIES, STOPS, TRAP, OFFSET TAILPIECE ESCUTCHEON PLATE	SENSOR FAUCET, WATER TURBINE POWERED W/ CONTROLLER FOR 0.09GPC, TOTO MODEL TEL105-D10E, TMV TOTO MODEL TLM10			
MSB-1	MOP SINK FLOOR MOUNTED, TERRAZZO 24"x24"x6"	FIAT SB2424	3"	1-1/2"	1/2"	1/2"	FAUCET, HOSE AND HOSE BRACKET	TWO LEVER FAUCET W/ INTERNAL STOPS AND VACUUM BREAKER, CHICAGO MODEL 445-897SRXXKCP			
PRV-1	PRESSURE REDUCING VALVE, LEAD FREE, STRAINER, PORTS FOR LOW FLOW BYPASS, LOW FLOW PRESSURE REGULATOR	HIGH FLOW: WATTS 3" LFN223FS LOW FLOW: WATTS 3/4" LF223	-	-	3"	-	-	PROVIDE PIPE AND FITTINGS WITH SHUTOFFS FOR 3/4" LOW FLOW BYPASS. PRESSURE SETTING TO 50 PSI.			
RD-1	ROOF DRAIN, CAST IRON BODY AND DOME, DECK CLAMP AND MOUNTING PLATE	FROET 200C-DC-DMP	-	-	-	-	-	REFER TO ROOF PLAN			
RD-2	ROOF DRAIN, CAST IRON BODY AND DOME, DECK CLAMP AND MOUNTING PLATE, 2" OVERFLOW DAM	FROET 200C-DMP-WD2	-	-	-	-	-	REFER TO ROOF PLAN			
RH-1	ROOF HYDRANT, FREEZE PROOF, CAST IRON HEAD AND HANDLE, GALVANIZED STEEL CASING, ROOF SUPPORT SLEEVE, ANCHORING FLANGE AND CLAMP COLLAR, VACUUM BREAKER, 1/8" DRAIN PORT	ZURN Z1388-VB	-	-	-	-	-	PROVIDE 1/8" TUBING FROM DRAIN PORT OPEN ENDED TO MOP RECEPTOR			
RPZ-1	REDUCED PRESSURE ZONE BACKFLOW PREVENTER W/ QUARTER TURN BALL VALVES, LEAD FREE (BUILDING SERVICE)	WATTS LF957-QT	-	-	3"	-	AIR GAP FITTING, WILKINS AG	FURNISHED BY UNIVERSITY INSTALLED BY CONTRACTOR			
RPZ-2	REDUCED PRESSURE ZONE BACKFLOW PREVENTER W/ QUARTER TURN BALL VALVES, LEAD FREE (HEATING HW MAKEUP)	WATTS LF009-QT	-	-	3/4"	-	AIR GAP FITTING, WILKINS AG	-			
SH-1	ADA COMPLIANT SHOWER, SOLID SURFACE SHOWER RECEPTOR WITH INTEGRAL REAR TRENCH DRAIN, 38"x36" INTERIOR, COLOR: PROVIDE STANDARD COLOR OPTIONS	WILLOUGHBY INDUSTRIES AQUASURF AS-S3636ADA	2"	1-1/2"	1/2"	1/2"	SHOWER VALVE (1.5GPM), STANDARD HEAD	SHOWER SYSTEM MOEN 8375EP15			
SK-1	STAINLESS STEEL SERVICE SINK, 12" HIGH BACKSPASH	ELKAY E55B2520C	1-1/2"	1-1/2"	1/2"	1/2"	WALL BRACKET, FAUCET, SS STRAINERS, SUPPLIES, STOPS, CAST IRON TRAP, TAILPIECE, AND ESCUTCHEON PLATE	FAUCETS WITH VACUUM BREAKER: TWO LEVER, BACKLASH MOUNTED ELKAY MODEL LK940BR03LZH			
SK-2	SINGLE BOWL STAINLESS STEEL DROP-IN SINK, 3 HOLES 4" OC, 22"x19 1/2"x5 1/2" DEEP	ELKAY LRAD2219	1-1/2"	1-1/2"	1/2"	1/2"	FAUCET, SS STRAINERS, SUPPLIES, STOPS, TRAP, TAILPIECE, AND ESCUTCHEON PLATE	FAUCETS: SINGLE LEVER, 1.5GPM CHICAGO MODEL 2300-8E34VPABCP			
TMV-1	THERMOSTATIC MIXING VALVE, HI/LO MASTER, ROUGH BRONZE BODY (MASTER)	POWERS LFSH1432	-	-	3/4"	3/4"	INSTALL COMBINATION PRESSURE AND TEMPERATURE GAUGE ON HW INLET AND OUTLET	5PSI DROP @ 19 GPM			
TPV	TRAP PRIMER VALVE	MIFAB MI-DU-500	-	-	1/2"	-	-	-			
UR-1	ADA COMPLIANT, URINAL, WALL MOUNTED, VITREOUS CHINA, 0.125GPF	KOHLER BARDON K-4904-ET	2"	2"	3/4"	-	HYDROPOWER SELF-GENERATING SYSTEM SENSOR FLUSH VALVE, CARRIER	TOTO ECOPOWER FLUSH VALVE, TEU1UA, 0.128 GPF WITH MANUAL OVER RIDE			
UR-2	URINAL, WALL MOUNTED, VITREOUS CHINA, 0.125GPF	KOHLER BARDON K-4904-ET	2"	2"	3/4"	-	HYDROPOWER SELF-GENERATING SYSTEM SENSOR FLUSH VALVE, CARRIER	TOTO ECOPOWER FLUSH VALVE, TEU1UA, 0.128 GPF WITH MANUAL OVER RIDE			
WC-1	ADA COMPLIANT, WATER CLOSET, FLUSH VALVE, WALL MOUNTED, TOP SPUD, VITREOUS CHINA, 1.28GPF	KOHLER KINGSTON K-4325	4"	2"	1"	-	HYDROPOWER SELF-GENERATING SYSTEM SENSOR FLUSH VALVE & OPEN FRONT SEAT, CARRIER	TOTO HIGH EFFICIENCY ECOPOWER FLUSH VALVE TET1LA, 1.28 GPF WITH MANUAL OVER RIDE			
WC-2	WATER CLOSET, FLUSH VALVE, WALL MOUNTED, TOP SPUD, VITREOUS CHINA, 1.28GPF	KOHLER KINGSTON K-4325	4"	2"	1"	-	HYDROPOWER SELF-GENERATING SYSTEM SENSOR FLUSH VALVE & OPEN FRONT SEAT, CARRIER	TOTO HIGH EFFICIENCY ECOPOWER FLUSH VALVE TET1LA, 1.28 GPF WITH MANUAL OVER RIDE			
WCO	WALL CLEANOUT, BRONZE PLUG AND SS ACCESS COVER	MIFAB C1430	VARIABLES	-	-	-	-	SIZE TO MATCH SANITARY LINE SIZE, MAXIMUM 4"			
WH-1	WALL HYDRANT, ENCASED NON-FREEZE, SATIN NICKEL BRONZE BOX, HINGED WITH LOCKING COVER	MIFAB MHY-20	-	-	3/4"	-	-	-			
WHA	WATER HAMMER ARRESTOR, PISTON OPERATED	MIFAB MWH	-	-	VARIABLES	-	-	NO ACCESS DOOR REQUIRED			

BLACKSBURG TRANSIT

BUILDING ADDRESS
1324 PERRY STREET, BLACKSBURG, VA 24060

MULTI-MODAL TRANSIT FACILITY
BID SET



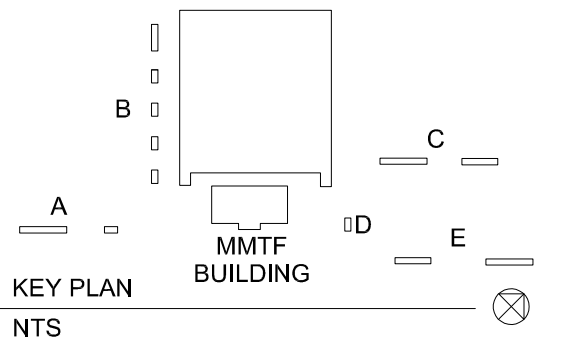
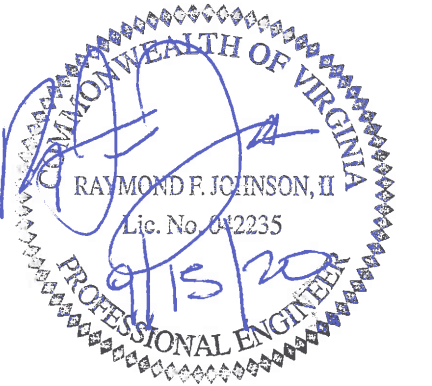
603 King Street, 4th Floor
Alexandria, VA 22314
www.wendelcompanies.com
p:703.299.8718 f:877.293.6335

ARCHITECTURE • ENGINEERING • PLANNING
ENERGY SERVICES • CONSTRUCTION MANAGEMENT



2206 South Main Street 540-552-0444
Blacksburg, VA 24060 www.daa.com
DAA Project No. B101728-05

NOTE:
THIS DOCUMENT, AND THE IDEAS AND DESIGN INCORPORATED HEREIN, AS AN INSTRUMENT OF PROFESSIONAL SERVICE, IS THE PROPERTY OF THE ARCHITECT AND ENGINEER AND IS NOT TO BE USED IN WHOLE OR IN PART FOR ANY OTHER PROJECT WITHOUT THE WRITTEN AUTHORIZATION OF THE ARCHITECT AND ENGINEER. UNAUTHORIZED ALTERATION OR ADDITION TO ANY SURVEY DRAWING, DESIGN SPECIFICATION, PLAN OR REPORT IS PROHIBITED IN ACCORDANCE WITH STATE LAW, CODE AND RULES.



0	BID SET	09-15-2020
NO.	REVISIONS	DATE

DWG. TITLE

PLUMBING SCHEDULES

DATE SEPTEMBER 15, 2020

SCALE NONE

DWN. TIP CHK. CRL

PROJ. No. 449803

DWG. No.

P301