

PLUMBING PIPING SYMBOLS	
---	CW DOMESTIC COLD WATER
---	H-CW HARD COLD WATER
---	S-CW SOFT COLD WATER
---	F-CW FILTERED COLD WATER
---	RO REVERSE OSMOSIS WATER
---	HW HOT WATER
---	HW 140° HOT WATER 140°
---	HWR HOT WATER RECIRCULATION
---	HWR 140° HOT WATER RECIRCULATION 140°
---	GV GREASE VENT
---	GW GREASE WASTE
---	-IW INDIRECT WASTE
---	OV OIL VENT
---	OW OIL WASTE
---	PD PUMP DISCHARGE
---	-V SANITARY VENT
---	SS SANITARY SEWER
---	SHWR SOLAR HOT WATER RETURN
---	SHWS SOLAR HOT WATER SUPPLY
---	SD STORM DRAINAGE
---	OSD OVERFLOW STORM DRAINAGE
---	CD CONDENSATE DRAINAGE
---	G NATURAL GAS
---	PG PROPANE GAS
---	CWV COMBINATION WASTE & VENT
---	CA COMPRESSED AIR
---	PIPE DROP
---	PIPE RISE
---	PIPE TEE
---	CAP
---	PLUG
---	REDUCING 45 DEGREE TEE
---	45 DEGREE TEE

PIPE ACCESSORY TAGS	
---	DOM. WM DOMESTIC WATER METER
---	BALANCING VALVE
---	SHUT OFF 1/4 TURN BALL VALVE
---	CHECK CHECK VALVE
---	TMV 3-WAY MIXING VALVE
---	2" M-CNTRL MOTORIZED CONTROL VALVE
---	2" 3-WAY CNTRL 3 WAY MOTORIZED CONTROL VALVE
---	2" PRV PRESSURE REDUCING VALVE
---	3/8" SOLENOID REFRIGERANT SOLENOID VALVE
---	2" BUTTERFLY BUTTERFLY VALVE

DRAIN TAGS	
---	4" FD FLOOR DRAIN
---	4" AD-6 AREA DRAIN
---	4" FD-3P FLOOR DRAIN
---	4" SD-29 DECK DRAIN
---	4" FS-4 FLOOR SINK
---	4" SD-12 FLOW CONTROL DRAIN
---	4" FD-13 HUB DRAIN
---	8 WFU 8 WAFU
---	6" SD-1 ROOF AREA SERVED BY DRAIN 4000 SF
---	COMBINATION DRAINS

PLUMBING FIXTURE TAGS	
---	P-2A

NOTE
 ALL OF GENERAL NOTES ON THIS SHEET ARE TO BE APPLIED TO ALL OTHER DRAWINGS IN THIS SET. THE SYMBOLS AND ABBREVIATIONS SHOWN ON THIS SHEET MAY OR MAY NOT BE USED IN THIS SET OF DRAWINGS.

GENERAL MECHANICAL SYMBOLS	
△	REVISION NUMBER - SHOWN ON PLANS
⊗	POINT WHERE NEW CONNECTS TO EXISTING
⊙	NUMBER OF DETAIL ON SHEET
⊖	NUMBER OF SHEET WHERE DETAIL APPEARS
□	CODED NOTE
⋮	CONTINUATION SYMBOL
Room 1	ROOM NAME AND NUMBER
▨	ITEM TO BE DEMOLISHED
▩	AREA NOT IN CONTRACT
2"	PIPE SIZE TAG (DIAMETER)
---	ABOVE GROUND PIPING
1/8" / 12" SLOPE	PIPE SLOPE TAG
---	BELOW GROUND PIPING
INVERT - 10' - 1'	PIPE INVERT ELEVATION TAG
(E)	EXISTING PIPE TAG
---	PIPING BEING DEMOLISHED

EQUIPMENT ABBREVIATIONS			
AC	AIR CONDITIONING UNIT	EW	ELECTRIC WATER HEATER
ACC	AIR COOLED CONDENSER	FCU	FAN COIL UNIT
ACCU	AIR COOLING CONDENSING UNIT	FP	FIRE PUMP
AHU	AIR HANDLING UNIT	GI	GREASE INTERCEPTOR
AS	AIR SEPARATOR	GRV	GRAVITY ROOF VENTILATOR
B	BOILER	HWP	HEATING WATER PUMP
CH	CHILLER	HX	HEAT EXCHANGER
CT	COOLING TOWER	HJU	HEAT RECOVERY UNIT
CJH	CABINET UNIT HEATER	PRV	POWER ROOF VENTILATOR
CWP	CONDENSER WATER PUMP	RE	RETURN EXHAUST FAN
CHWP	CHILLED WATER PUMP	RTU	ROOFTOP UNIT
DBP	DOMESTIC WATER BOOSTER PUMP	SEP	SEWAGE EJECTOR PUMP
DC	DUCT MOUNTED COIL	SF	SUPPLY FAN
DCP	DUCT MOUNTED CIRCULATING PUMP	SP	SUMP PUMP
EF	EXHAUST FAN	LH	UNIT HEATER
EDC	ELECTRIC DUCT COIL	WH	WATER HEATER
ET	EXPANSION TANK		

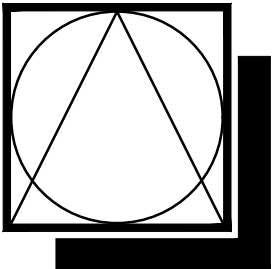
ABBREVIATIONS			
∅	ROUND	LVR	LOUVER
ABV	ABOVE	LWT	LEAVING WATER TEMPERATURE
AC	AIR CONDITIONING	M/A	MIXED AIR
AD	AREA DRAIN	MAX	MAXIMUM
ADD	ADDENDUM	MBH	ONE THOUSAND BTU PER HOUR
AFF	ABOVE FINISHED FLOOR	MCF	ONE THOUSAND CUBIC FEET
AFUE	ANNUAL FUEL UTILIZATION EFFICIENCY	MD	MOTORIZED DAMPER
ALT	ALTERNATE	MECH	MECHANICAL
AP	ACCESS PANEL	MFR	MANUFACTURER
ARCH	ARCHITECT/ARCHITECTURAL	MIN	MINIMUM
BFF	BELOW FINISHED FLOOR	MISC	MISCELLANEOUS
BLW	BELOW	MTR	MOTOR
BTU	BRITISH THERMAL UNITS	MU/A	MAKE-UP/AIR
BTUH	BRITISH THERMAL UNITS PER HOUR	NC	NOISE CRITERIA
CAP	CAPACITY	NC	NORMALLY CLOSED
CB	CATCH BASIN	NIC	NOT IN CONTRACT
CFM	CUBIC FEET PER MINUTE	NO	NUMBER
CLG	CEILING	NO	NORMALLY OPEN
CO	CLEAN OUT	NTS	NOT TO SCALE
CW	COLD WATER	O	OXYGEN
D	DEGREE	O/A	OUTSIDE AIR
DB	DRY BULB	ORD	OVERFLOW ROOF DRAIN
DIA	DIAMETER	PD	PRESSURE DROP
DN	DOWN	PIV	POST INDICATOR VALVE
DW	DISTILLED WATER	PLBG	PLUMBING
EA	EACH	PRESS	PRESSURE
EAT	ENTERING AIR TEMPERATURE	PRV	PRESSURE REDUCING VALVE
ELEC	ELECTRICAL	PSI	POUNDS PER SQUARE INCH
EQUIP	EQUIPMENT	PSIG	POUNDS PER SQUARE INCH GAUGE
EWC	ELECTRIC WATER COOLER	PWR	POWER
EWT	ENTERING WATER TEMPERATURE	R	DUCT RISER
E/A	EXHAUST AIR	R/A	RETURN AIR
EXIST	EXISTING	RCP	RADIANT CEILING PANEL
F	DEGREES FAHRENHEIT	RD	ROOF DRAIN
FCO	FLOOR CLEAN OUT	REC	RECESSED
FD	FLOOR DRAIN	RED	REDUCER
FD	FIRE DAMPER	RH	RELATIVE HUMIDITY
FV	FIRE DEPARTMENT VALVE	RLA	RELIEF AIR
FL	FLOOR	RM	ROOM
FO	FUEL OIL	RPM	REVOLUTIONS PER MINUTE
FOV	FUEL OIL VENT	RW	RAIN WATER
FOR	FUEL OIL RETURN	SF	SQUARE FOOT
FOS	FUEL OIL SUPPLY	S/A	SUPPLY AIR
FPM	FEET PER MINUTE	SAN	SANITARY
FS	FLOOR SINK	SF	SQUARE FOOT
FT	FOOT/FEET	SD	SMOKE DAMPER
FTR	FIN TUBE RADIATION	SM	SURFACE MOUNT
GAL	GALLON	SP	STANDPIPE
GC	GENERAL CONTRACTOR	SP	STATIC PRESSURE
GPM	GALLONS PER MINUTE	STM	STEAM
GW	GREASE WASTE	T	THERMOSTAT
HB	HOSE BIB	TD	TEMPERATURE DROP
HP	HORSE POWER	TDR	TRENCH DRAIN
HS	HAND SINK	TEMP	TEMPERATURE
HTG	HEATING	TYP	TYPICAL
HTR	HEATER	UG	UNDERGROUND
HW	HOT WATER	VAC	VACUUM
HYD	HYDRANT	V	VENT
ID	INDIRECT	VAV	VARIABLE AIR VOLUME
IN	INCH	VENT	VENTILATION
INV	INVERT	VTR	VENT THROUGH ROOF
LB	POUND	W	WASTE
LB/HR	POUNDS PER HOUR	WB	WET BULB
LAT	LEAVING AIR TEMPERATURE	WCO	WALL CLEAN OUT
LP	LOW PRESSURE	WH	WALL HYDRANT
LPG	LIQUEFIED PETROLEUM GAS		

FIRE PROTECTION DESIGN DOCUMENTS

DESIGN AND FINAL DOCUMENTS ARE THE RESPONSIBILITY OF THE FIRE PROTECTION CONTRACTOR. THIS DOCUMENT HAS BEEN CREATED TO ASSIST THE FIRE PROTECTION CONTRACTORS IN DEFINING SCOPE AND IDENTIFYING ELEMENTS OF THE BUILDING. THE FIRE PROTECTION CONTRACTOR AND THE CERTIFIED DESIGN PROFESSIONAL ARE RESPONSIBLE TO DESIGN THE SYSTEM, OBTAIN PERMITS / INSPECTIONS AND PROVIDE A COMPLETE SYSTEM.

FIRE PROTECTION SYMBOLS	
---	FP-D FIRE PROTECTION DRY
---	FP-O FIRE PROTECTION OTHER
---	FP-PA FIRE PROTECTION PRE-ACTION
---	FP-W FIRE PROTECTION WET
---	FP-DOM-W COMBINATION FIRE & DOMESTIC
○	UPRIGHT SPRINKLER HEAD
●	PENDENT SPRINKLER HEAD
●	CONCEALED SPRINKLER HEAD
●	SEMI-RECESSED PENDANT
○	UPRIGHT WITH GUARD
○	'D' REPRESENTS DRY SPRINKLER HEAD
□	SIDEWALL SPRINKLER HEAD
□	EXTENDED COVERAGE SIDEWALL SPRINKLER HEAD
48"118" S/A	OBSTRUCTION FROM DUCTWORK 48" AND GREATER

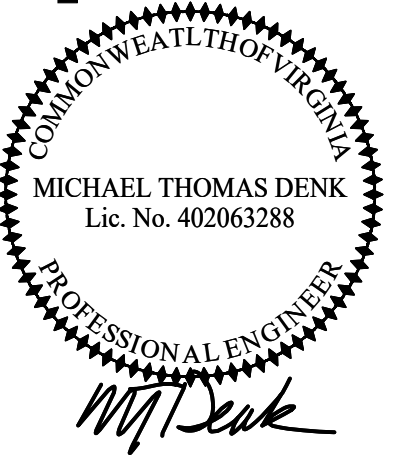
- PLUMBING GENERAL NOTES**
- PLUMBING GENERAL NOTES**
- UNLESS DIRECTED OTHERWISE, WHERE CONCEALING/FINISH STRUCTURE IS PROVIDED UNDER SEPARATE CONTRACT, ALL WORK IN THE PLUMBING CONTRACT NOT SPECIFICALLY NOTED FOR EXPOSED/VISIBLE LOCATION/INSTALLATION SHALL BE INSTALLED WITHIN THE CONCEALING STRUCTURE WHENEVER POSSIBLE.
 - ALL PIPING SHOWN IS ABOVE CEILING IN AREAS WITH DROPPED CEILINGS OR AT BOTTOM OF SUPPORT STRUCTURE FOR FLOOR OR ROOF ABOVE IN EXPOSED STRUCTURE AREAS, UNLESS NOTED OTHERWISE.
 - THE PLUMBING CONTRACTOR IS TO SECURE AND VERIFY ALL MEASUREMENTS AND CONDITIONS AT JOB BEFORE PROCEEDING WITH FABRICATION OF WORK.
 - THE PLUMBING CONTRACTOR IS TO PROVIDE ALL ADDITIONAL STEEL HANGER MATERIALS, RODS AND CLAMPS AS REQUIRED FOR COORDINATION WITH WORK OF OTHER TRADES.
 - THE PLUMBING CONTRACTOR IS RESPONSIBLE FOR FIRESTOPPING AT ALL PLUMBING RELATED PENETRATIONS OF FIRE AND SMOKE RATED STRUCTURES, FLOORS AND PARTITIONS. REFER TO ARCHITECTURAL FLOOR PLANS FOR LOCATIONS OF ALL RATED STRUCTURES.
 - PIPING LAYOUT IS ONLY SCHEMATIC. EXACT LOCATION OF PIPES TO BE COORDINATED WITH BUILDING STRUCTURE AND WORK OF OTHER CONTRACTORS.
 - CONCEAL PIPING WHENEVER POSSIBLE UNLESS NOTED OTHERWISE.
 - RUN ALL WATER LINES LEVEL.
 - ROUGH-IN ALL PIPING THRU FACE OF WALL WHERE POSSIBLE. EXCEPT IN OUTSIDE WALLS. TERMINATE WITH SHORT NIPPLE AND CAP.
 - SUPPORT CAST IRON SANITARY AND STORM PIPING PER SPECIFICATIONS.
 - WORK SHALL BE INSTALLED IN ACCORDANCE WITH THE VIRGINIA PLUMBING CODE.
 - PROVIDE CLEANOUTS AT BASE OF ALL STORM DOWNSPOUT STACKS.
 - PROVIDE CLEANOUTS AT NOT MORE THAN 100 FEET APART IN HORIZONTAL STORM AND SANITARY DRAINAGE LINE.
 - PROVIDE CLEANOUTS AT EACH CHANGE OF DIRECTION GREATER THAN 45 DEGREES IN THE BUILDING DRAIN (SANITARY PIPING BELOW FLOOR SLAB).
 - PROVIDE A CLEANOUT NEAR THE JUNCTION OF BUILDING DRAIN AND BUILDING SEWER. CLEANOUT SHALL BE EITHER INSIDE OR OUTSIDE THE BUILDING WALL.
 - ALL FIXTURES TO BE EQUIPPED WITH STOP VALVES IN ACCESSIBLE LOCATION.
 - SEE ARCHITECTURAL DRAWINGS FOR DETAILS OF TABLES, BENCHES, AND COUNTERS, SHOWING EXACT LOCATION OF OPENINGS, DRAINS, WATER OUTLETS, AND OTHER APPURTENANCES.
 - SEE KITCHEN EQUIPMENT LAYOUT DRAWINGS FOR EXACT LOCATIONS OF EQUIPMENT, APPLIANCES AND FIXTURES IN THE FOOD SERVICE AREA(S), AND FOR UTILITY CONNECTIONS TO SAME.
 - VERIFY THE EXACT LOCATION OF ALL DRAINS WITH THE ARCHITECTURAL AND STRUCTURAL DRAWINGS FOR PROPER PLACEMENT IN RESPECT TO SLOPES.
 - UNLESS INDICATED OTHERWISE, BUILDING DRAIN (STORM, SANITARY, ETC.) TIE-INS ARE PROVIDED AT 5 FEET BEYOND FACE OF EXTERIOR STRUCTURE AND CONTINUED TO SITE UTILITY ELEMENTS UNDER SEPARATE CONTRACT. COORDINATE/CONFIRM LOCATION, INCLUDING INVERT ELEVATION, WITH THE SITE UTILITY CONTRACTOR.
 - UNLESS INDICATED OTHERWISE, BUILDING DOMESTIC WATER SERVICE TIE-IN(S) (S/A) ARE PROVIDED AT 12" ABOVE FLOOR AT BUILDING INTERIOR ENTRANCE POINT(S), CONTINUED FROM SITE UTILITY ELEMENTS UNDER SEPARATE CONTRACT. COORDINATE/CONFIRM LOCATION(S) WITH THE SITE UTILITY CONTRACTOR.
 - ALL FLOOR DRAINS LOCATED IN RESTROOMS THAT ARE DIRECTLY CONNECTED TO THE SANITARY WASTE SYSTEM SHALL BE SUPPLIED WITH A TRAP PRIMER LINE FROM THE NEAREST WATER CLOSET FLUSH VALVE, UNLESS INDICATED OTHERWISE ON THE DRAWINGS.
 - ALL SANITARY VENTS SHALL BE INSTALLED AT MINIMUM OF 15 FEET FROM ANY OUTSIDE AIR INTAKES.



DSC
ARCHITECTS
401 FRONT STREET
BEREA, OHIO 44017
PHONE: 440.835.3957
mail@dscarchitects.com

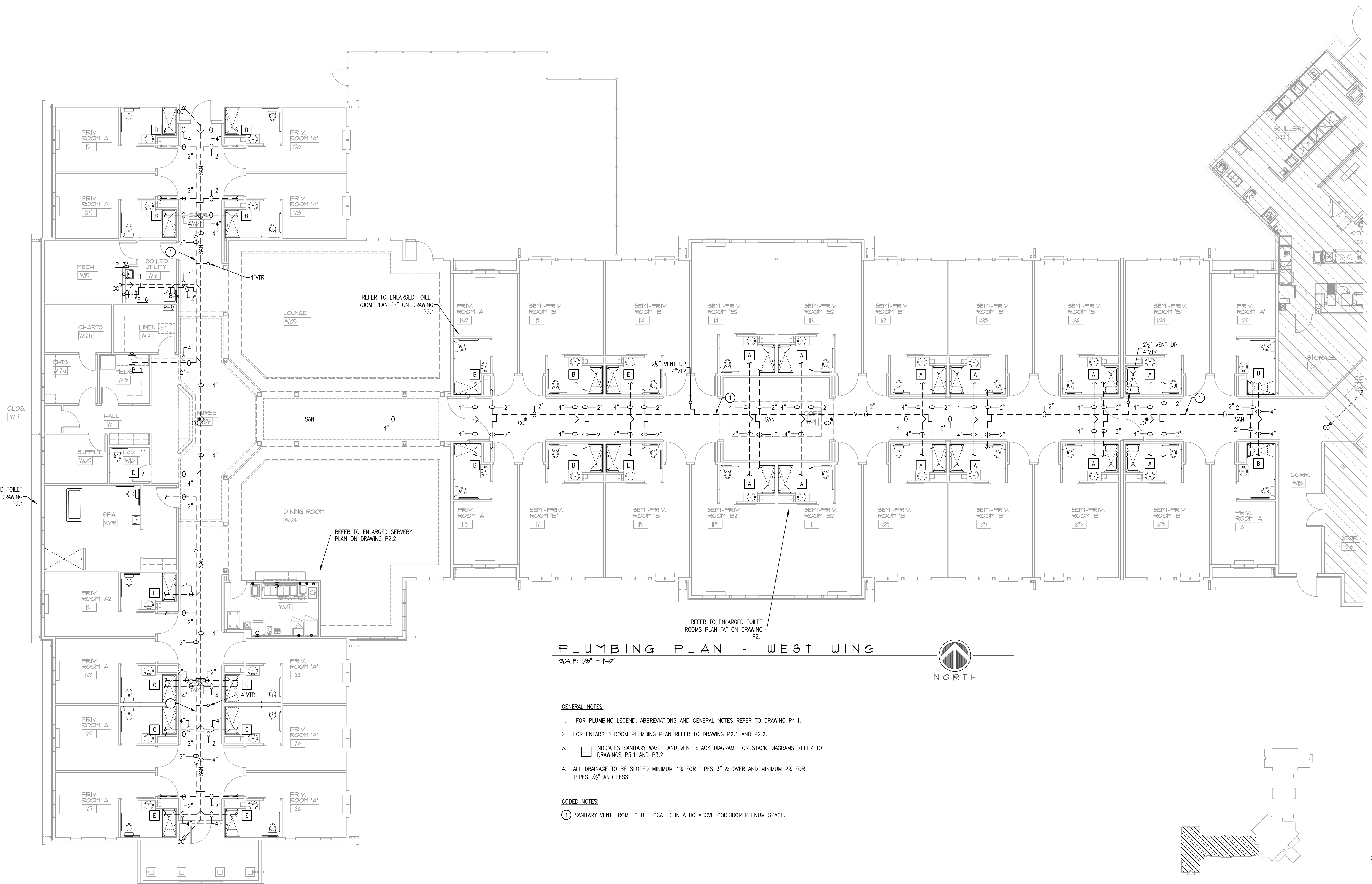
DATE:
PERMIT SET:
01/15/25

NEW 90 BED SKILLED NURSING FACILITY
SMITH MOUNTAIN LAKE HEALTH & REHAB CENTER
STATE RTE 616
MONETA, FRANKLIN COUNTY, VIRGINIA



M.T. Denk
DSCA PROJECT NO.
23.046

P.1




PLUMBING PLAN - WEST WING

SCALE: 1/8" = 1'-0"



GENERAL NOTES:

1. FOR PLUMBING LEGEND, ABBREVIATIONS AND GENERAL NOTES REFER TO DRAWING P4.1.
2. FOR ENLARGED ROOM PLUMBING PLAN REFER TO DRAWING P2.1 AND P2.2.
3.  INDICATES SANITARY WASTE AND VENT STACK DIAGRAM. FOR STACK DIAGRAMS REFER TO DRAWINGS P3.1 AND P3.2.
4. ALL DRAINAGE TO BE SLOPED MINIMUM 1% FOR PIPES 3" & OVER AND MINIMUM 2% FOR PIPES 2 1/2" AND LESS.

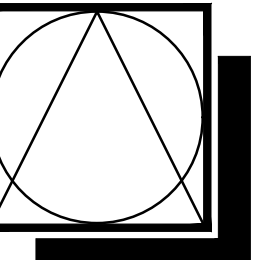
CODED NOTES:

- ① SANITARY VENT FROM TO BE LOCATED IN ATTIC ABOVE CORRIDOR PLENUM SPACE.



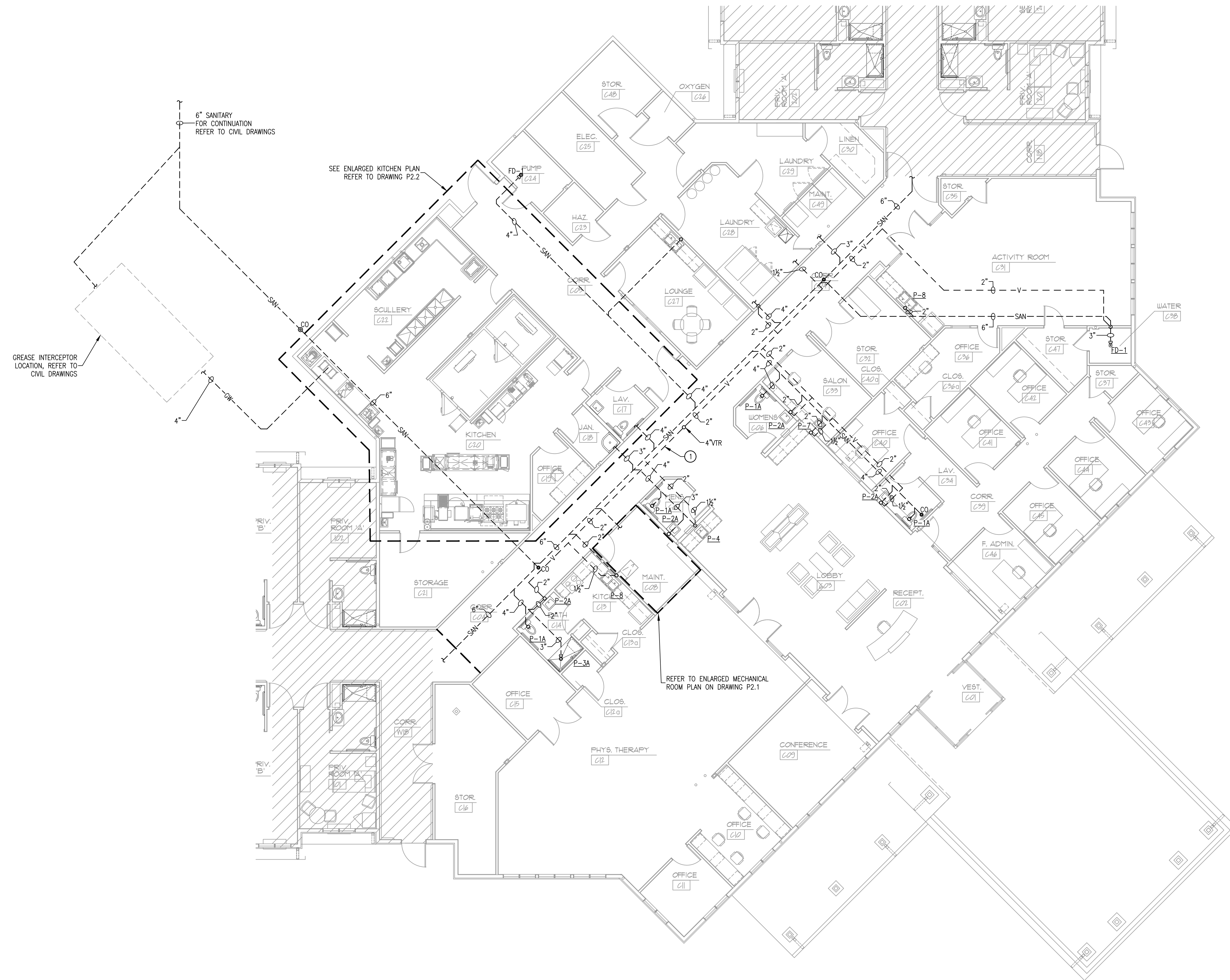
KEY PLAN
1/16"=1'-0"

2025-01-17 - 18" = 1'-0"



DSC
ARCHITECTS
401 FRONT STREET
BEREA, OHIO 44017
PHONE: 440.835.3957
mail@dscarchitects.com

DATE:
PERMIT SET: 01/15/25

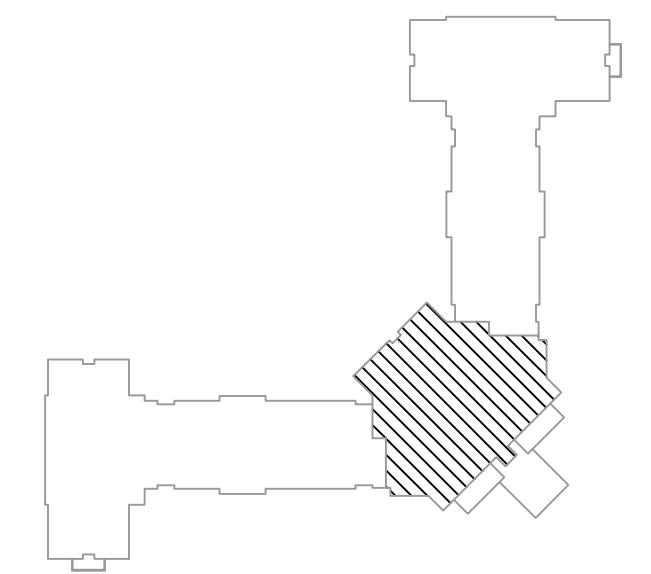


GENERAL NOTES:

1. FOR PLUMBING LEGEND, ABBREVIATIONS AND GENERAL NOTES REFER TO DRAWING P4.1.
2. FOR ENLARGED ROOM PLUMBING PLAN REFER TO DRAWINGS P2.1 & P2.2.
3. ALL DRAINAGE TO BE SLOPED MINIMUM 1% FOR PIPES 3" & OVER AND MINIMUM 2% FOR PIPES 2 1/2" AND LESS.

CODED NOTES:

- ① SANITARY VENT TO BE LOCATED IN ATTIC ABOVE CORRIDOR PLENUM SPACE.



KEY PLAN
1/16"=1'-0"

PLUMBING PLAN - CENTER
SCALE: 1/8" = 1'-0"

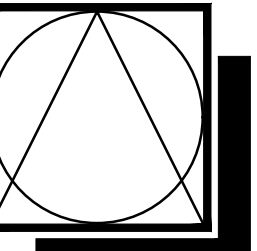


NEW 90 BED SKILLED NURSING FACILITY
SMITH MOUNTAIN LAKE HEALTH & REHAB CENTER
STATE RTE 616
MONETA, FRANKLIN COUNTY, VIRGINIA



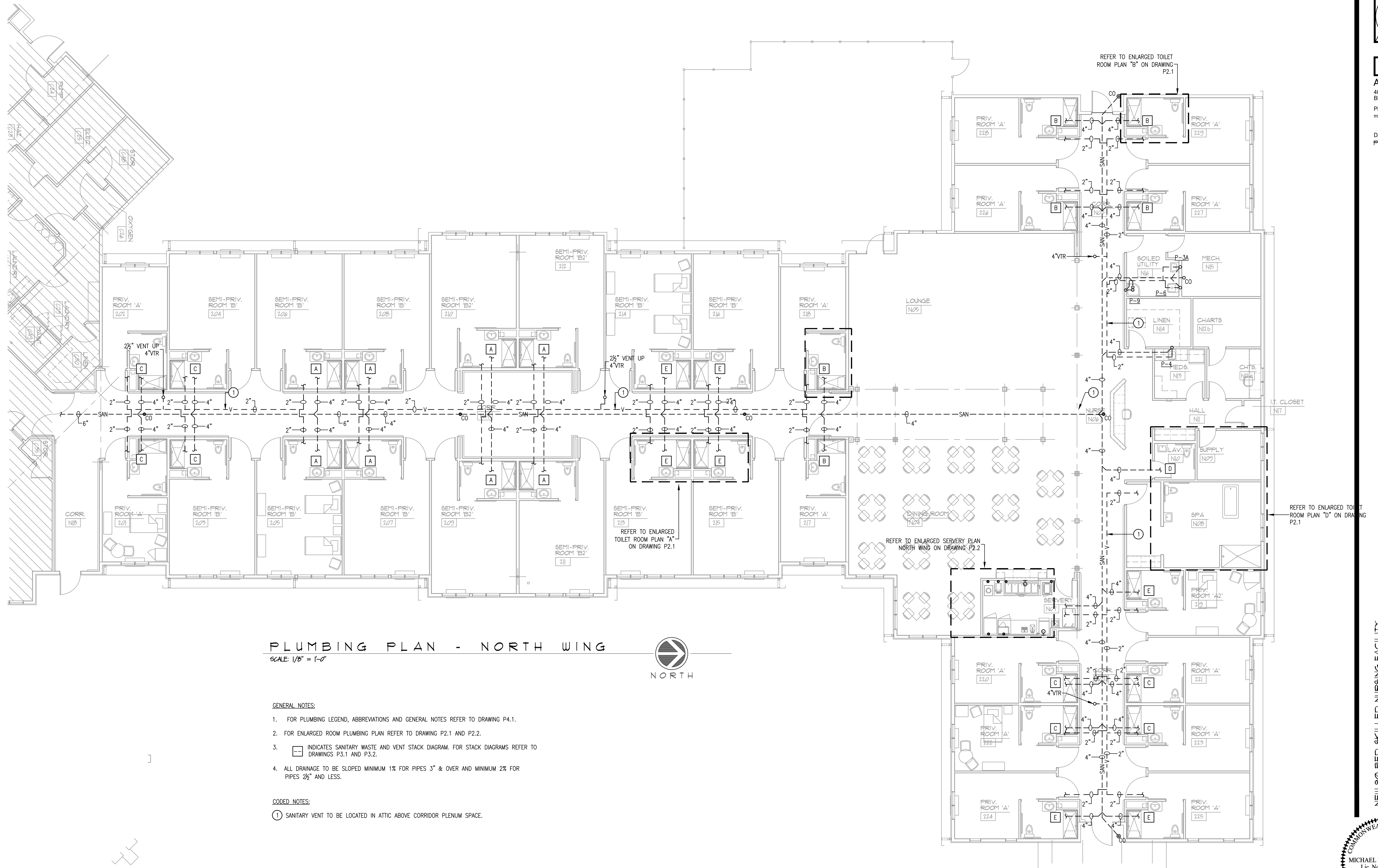
M.T. Denk

DSCA PROJECT NO.
23.046



DSC
ARCHITECTS
401 FRONT STREET
BEREA, OHIO 44017
PHONE: 440.835.3957
mail@dscarchitects.com

DATE:
PERMIT SET:
01/15/25

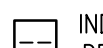


PLUMBING PLAN - NORTH WING

SCALE: 1/8" = 1'-0"



GENERAL NOTES:

1. FOR PLUMBING LEGEND, ABBREVIATIONS AND GENERAL NOTES REFER TO DRAWING P4.1.
2. FOR ENLARGED ROOM PLUMBING PLAN REFER TO DRAWING P2.1 AND P2.2.
3.  INDICATES SANITARY WASTE AND VENT STACK DIAGRAM. FOR STACK DIAGRAMS REFER TO DRAWINGS P3.1 AND P3.2.
4. ALL DRAINAGE TO BE SLOPED MINIMUM 1% FOR PIPES 3" & OVER AND MINIMUM 2% FOR PIPES 2 1/2" AND LESS.

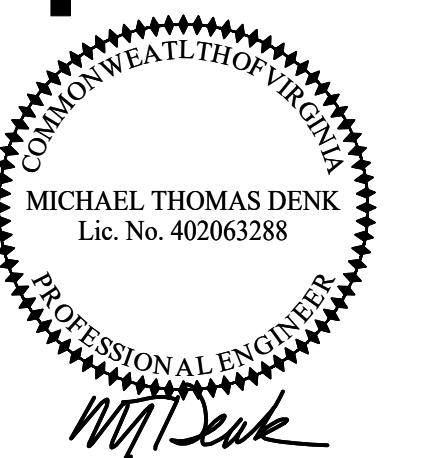
CODED NOTES:

- ① SANITARY VENT TO BE LOCATED IN ATTIC ABOVE CORRIDOR PLENUM SPACE.



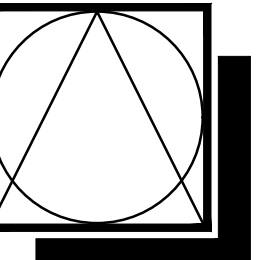
KEY PLAN
1/16"=1'-0"

NEW 90 BED SKILLED NURSING FACILITY
SMITH MOUNTAIN LAKE HEALTH & REHAB CENTER
STATE RTE 616
MONETA, FRANKLIN COUNTY, VIRGINIA



M.T. Denk

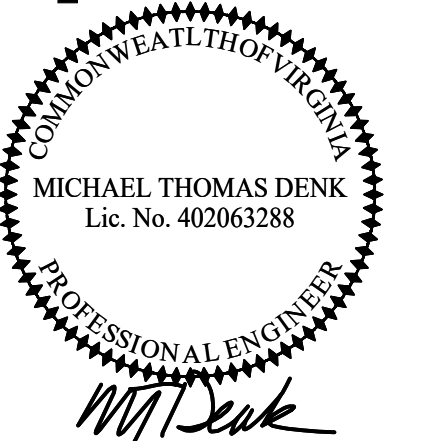
DSCA PROJECT NO.
23.046



DSC
ARCHITECTS
401 FRONT STREET
BEREA, OHIO 44017
PHONE: 440.835.3957
mail@dscarchitects.com

DATE:
PERMIT SET:
01/15/25

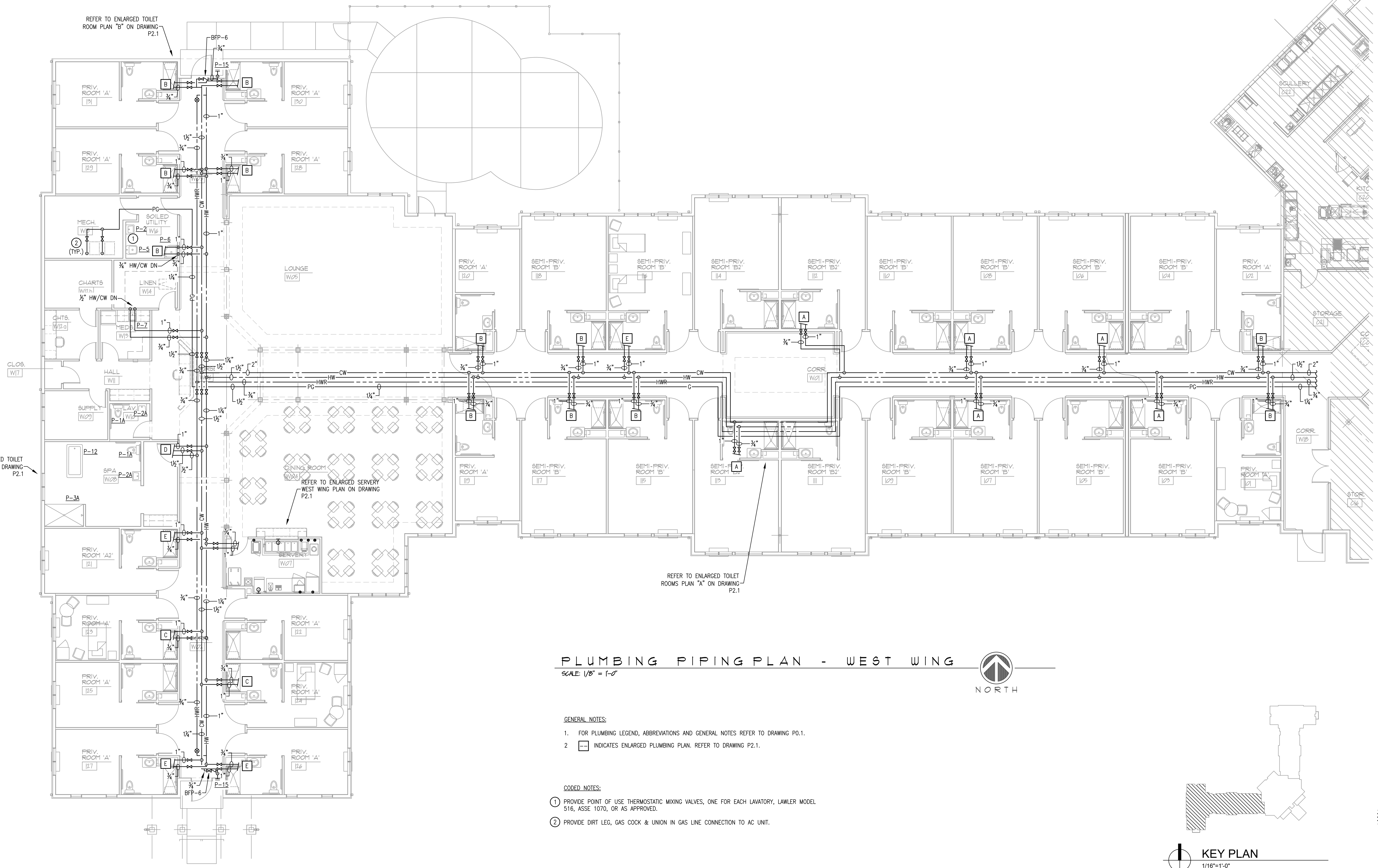
NEW 90 BED SKILLED NURSING FACILITY
SMITH MOUNTAIN LAKE HEALTH & REHAB CENTER
STATE RTE 616
MONETA, FRANKLIN COUNTY, VIRGINIA



MT Denk

DSCA PROJECT NO.
23.046

P1.4

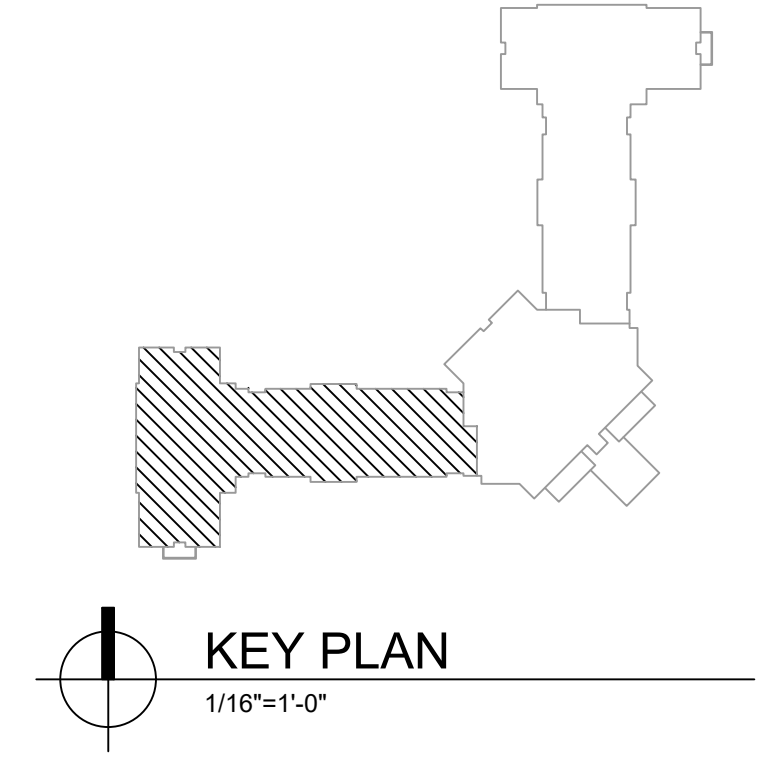


PLUMBING PIPING PLAN - WEST WING

SCALE: 1/8" = 1'-0"



- GENERAL NOTES:**
- FOR PLUMBING LEGEND, ABBREVIATIONS AND GENERAL NOTES REFER TO DRAWING PD.1.
 - INDICATES ENLARGED PLUMBING PLAN. REFER TO DRAWING P2.1.
- CODED NOTES:**
- PROVIDE POINT OF USE THERMOSTATIC MIXING VALVES, ONE FOR EACH LAVATORY, LAWLER MODEL 516, ASSE 1070, OR AS APPROVED.
 - PROVIDE DIRT LEG, GAS COCK & UNION IN GAS LINE CONNECTION TO AC UNIT.



KEY PLAN
1/16"=1'-0"

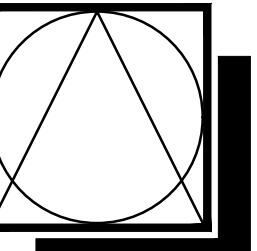
REFER TO ENLARGED TOILET ROOM PLAN "D" ON DRAWING P2.1

REFER TO ENLARGED TOILET ROOM PLAN "B" ON DRAWING P2.1

REFER TO ENLARGED SERVTRY WEST WING PLAN ON DRAWING P2.1

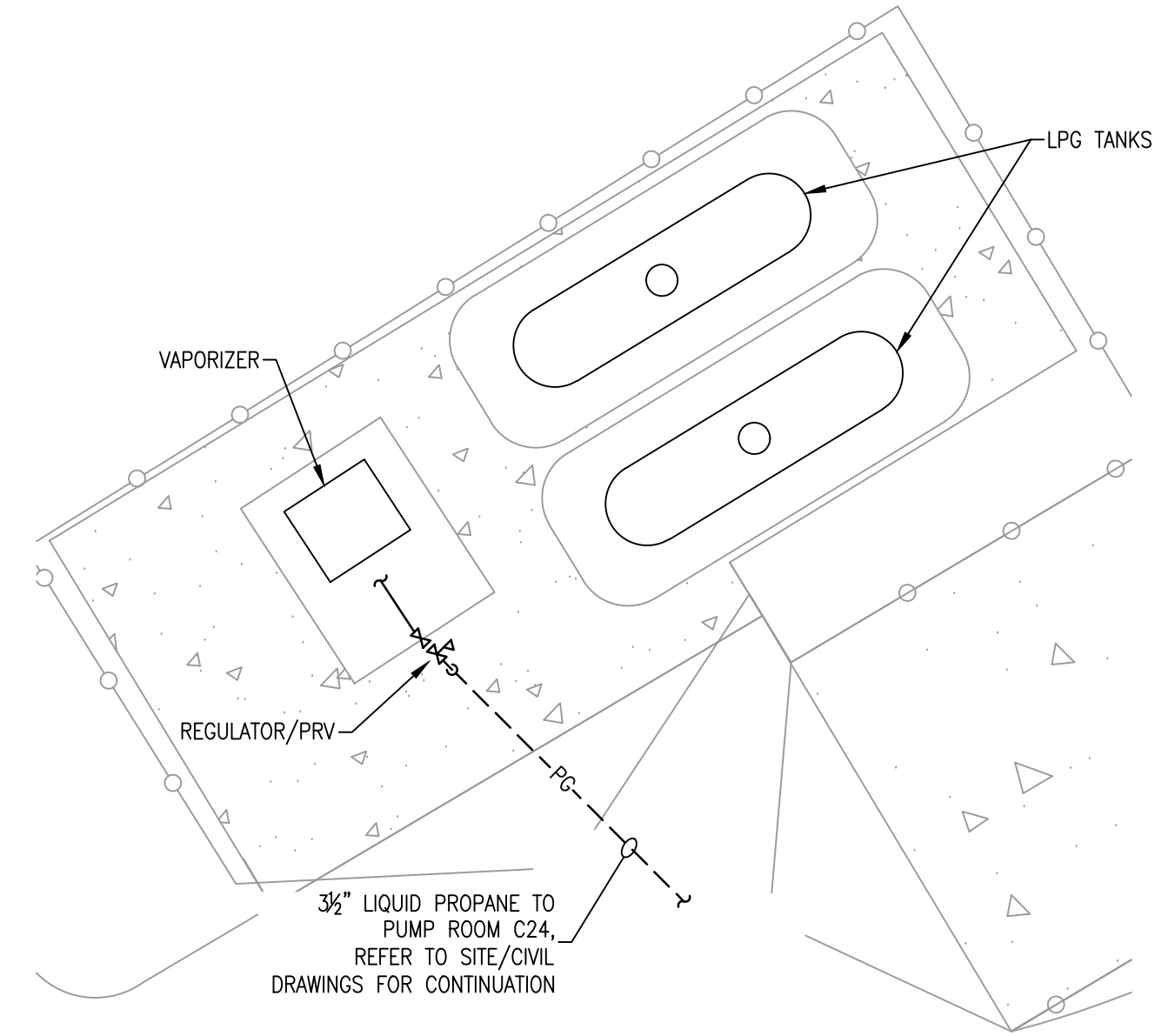
REFER TO ENLARGED TOILET ROOMS PLAN "A" ON DRAWING P2.1

2025-01-17 - 18" = 1'-0"

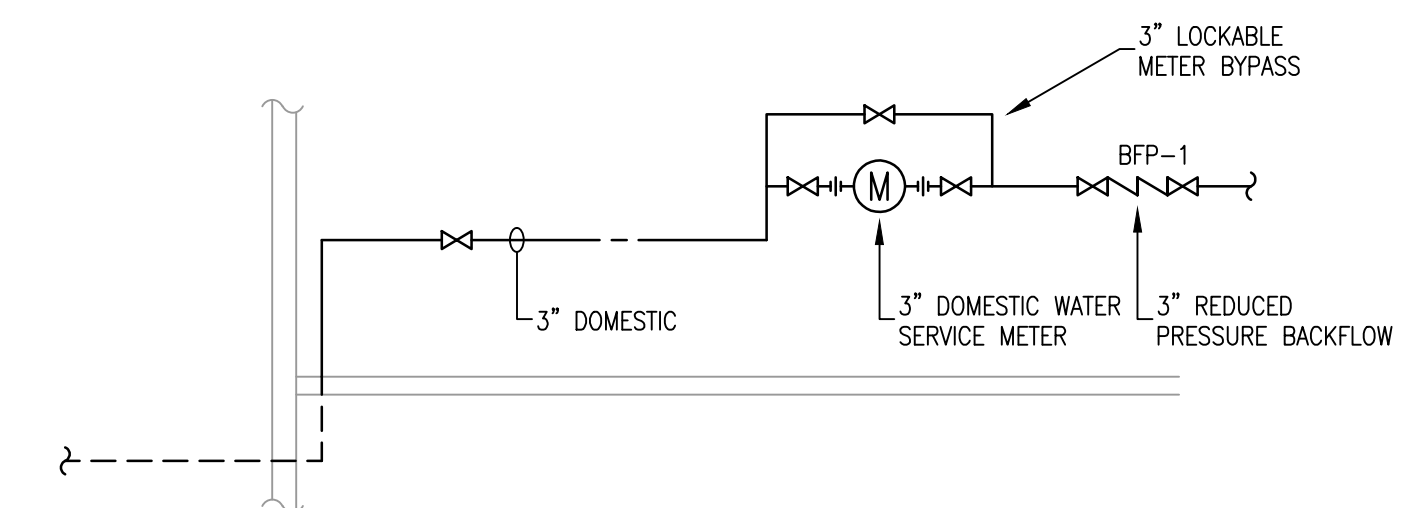


DSC
ARCHITECTS
401 FRONT STREET
BEREA, OHIO 44017
PHONE: 440.835.3957
mail@dscarchitects.com

DATE:
PERMIT SET:
01/15/25



1 LPG TANKS - NW PARKING AREA
SCALE: 1/8"=1'-0"



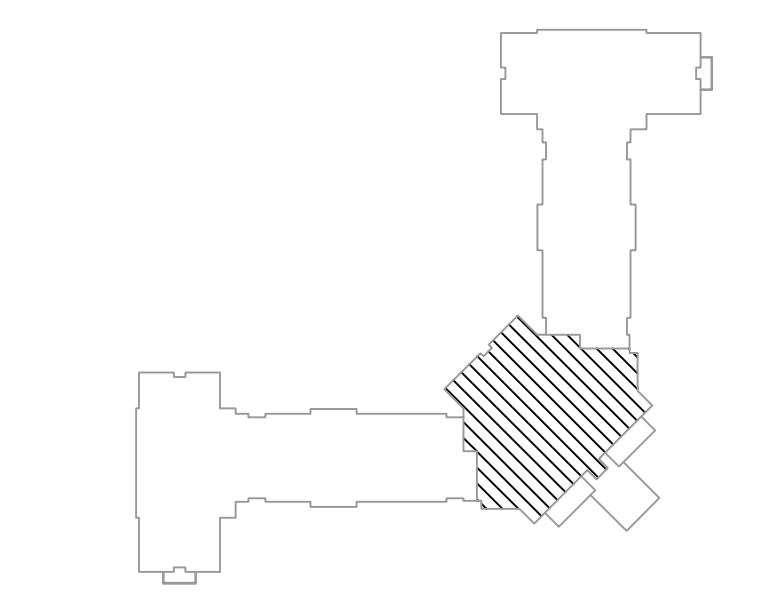
2 WATER SERVICE DETAIL
Scale: NTS

GENERAL NOTES:

- FOR PLUMBING LEGEND, ABBREVIATIONS AND GENERAL NOTES REFER TO DRAWING P0.1.
- INDICATES ENLARGED PLUMBING PLAN. REFER TO DRAWINGS P2.1 & P2.2.
- PROVIDE POINT OF USE THERMOSTATIC MIXING VALVES, ONE FOR EACH LAVATORY, LAWLER MODEL 516, ASSE 1070, OR AS APPROVED.

CODED NOTES:

- DOMESTIC WATER METER & CITY APPROVED BACKFLOW PREVENTER IS LOCATED IN VAULT. FOR EXACT LOCATION REFER TO SITE/CIVIL DRAWINGS.
- 3" CW UP THRU FLOOR SLAB. PROVIDE MAIN SHUT-OFF VALVE IN RISER.
- 1" GAS LINE UP TO RTU-2 ON ROOF. PROVIDE PATE PIPE CURB.
- 1/2" GAS LINE UP TO RTU-1 & RTU-3 ON ROOF. PROVIDE PATE PIPE CURB.
- REGULATOR, PRV ASSEMBLY, & MAIN SHUT-OFF VALVE PER LOCAL REQUIREMENTS. CONNECTED LOAD = 3,110 MBH.



KEY PLAN
1/16"=1'-0"

PLUMBING PIPING PLAN - CENTER
SCALE: 1/8" = 1'-0"



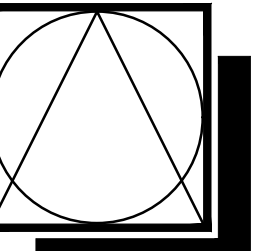
NEW 90 BED SKILLED NURSING FACILITY
SMITH MOUNTAIN LAKE HEALTH & REHAB CENTER
 STATE RTE 616
 MONETA, FRANKLIN COUNTY, VIRGINIA



MT Denk

DSCA PROJECT NO.
23.046

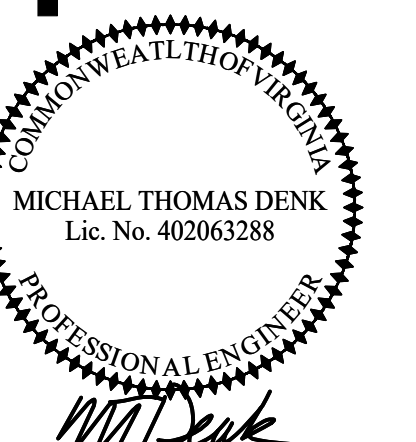
P15



DSC
ARCHITECTS
 401 FRONT STREET
 BEREA, OHIO 44017
 PHONE: 440.835.3957
 mail@dscarchitects.com

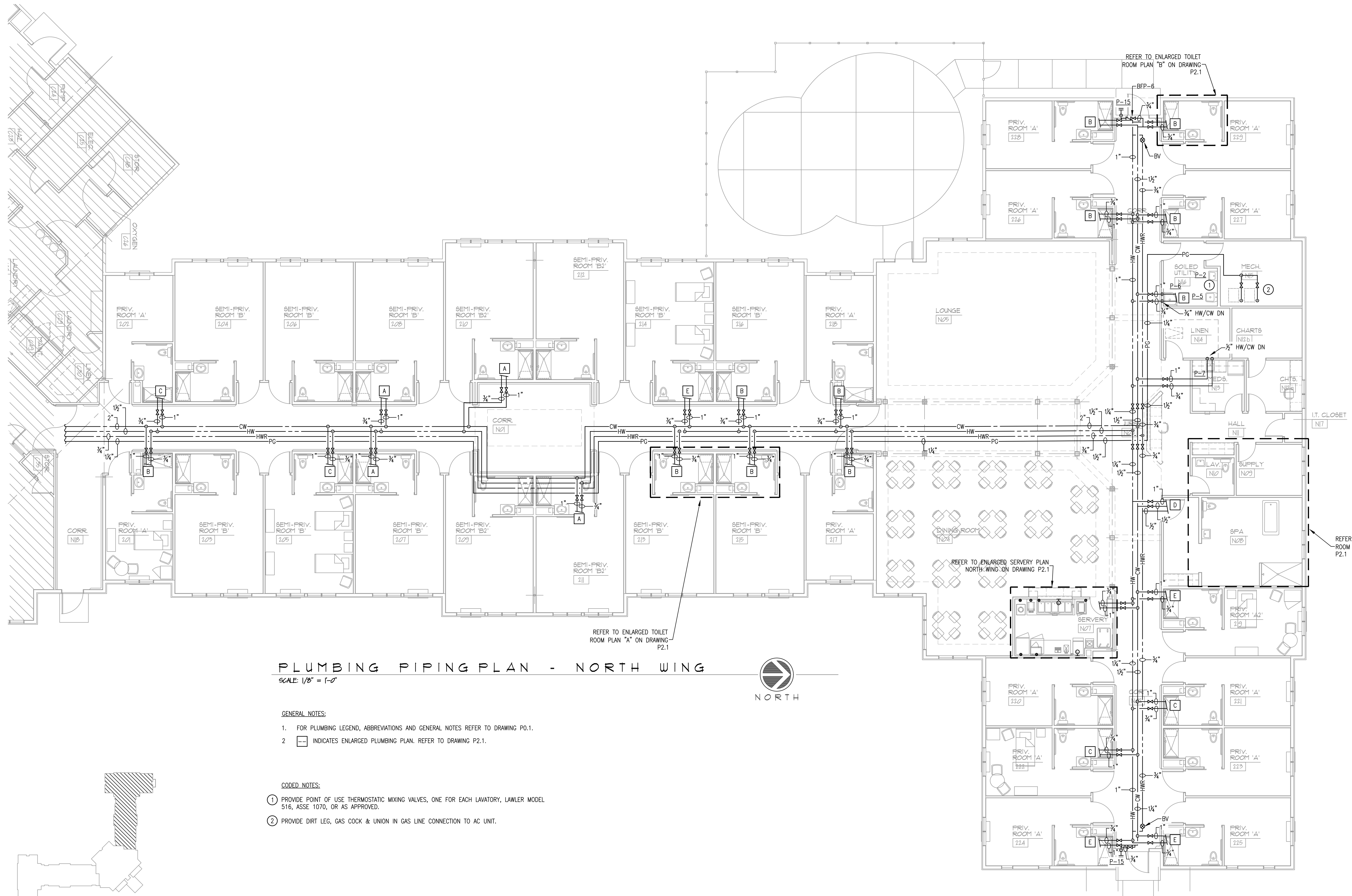
DATE:
 PERMIT SET:
 01/15/25

NEW 90 BED SKILLED NURSING FACILITY
SMITH MOUNTAIN LAKE HEALTH & REHAB CENTER
 STATE RTE 616
 MONETA, FRANKLIN COUNTY, VIRGINIA



DSCA PROJECT NO.
 23.046

P1.6



PLUMBING PIPING PLAN - NORTH WING

SCALE: 1/8" = 1'-0"

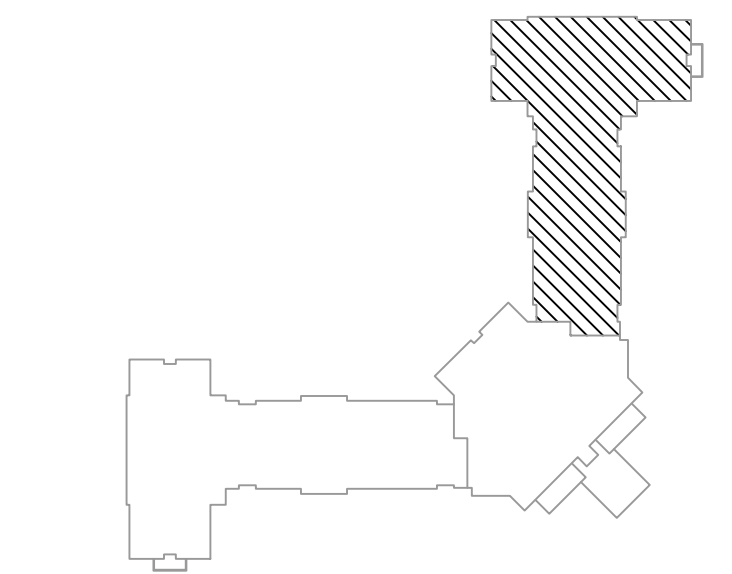


GENERAL NOTES:

1. FOR PLUMBING LEGEND, ABBREVIATIONS AND GENERAL NOTES REFER TO DRAWING P0.1.
2. INDICATES ENLARGED PLUMBING PLAN. REFER TO DRAWING P2.1.

CODED NOTES:

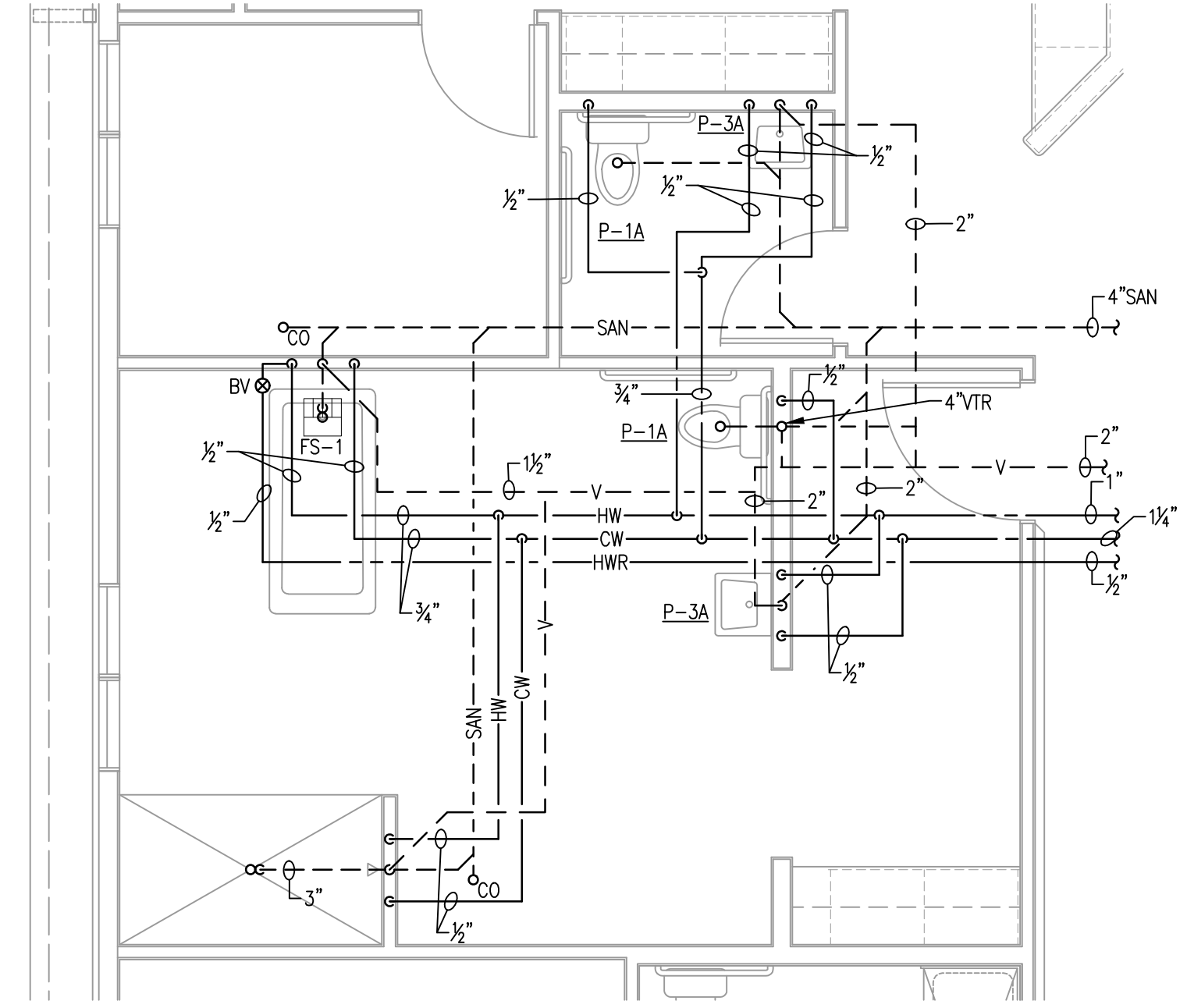
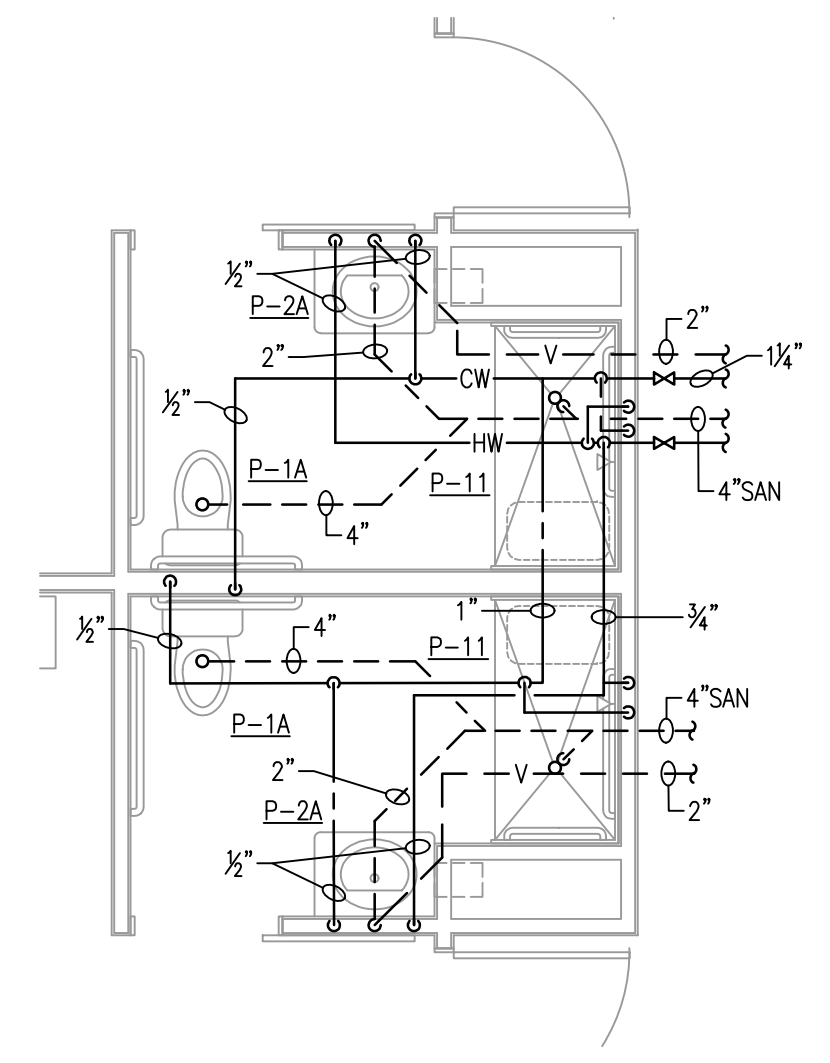
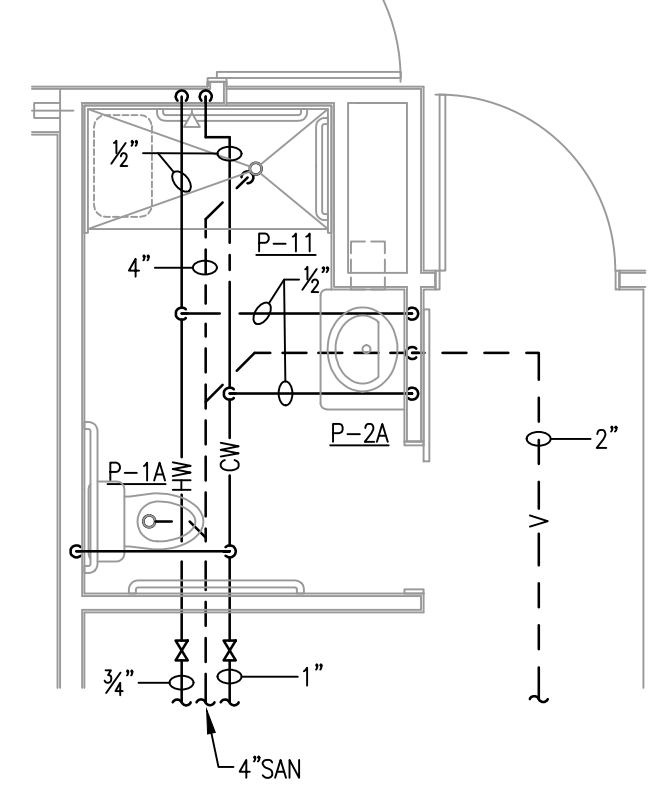
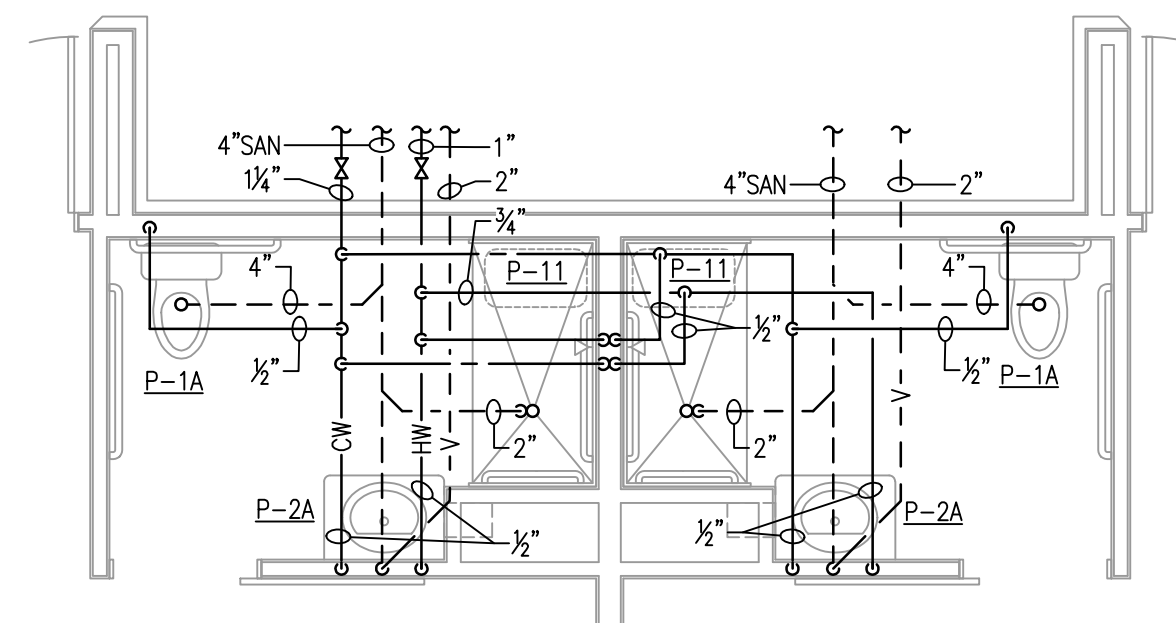
- 1 PROVIDE POINT OF USE THERMOSTATIC MIXING VALVES, ONE FOR EACH LAVATORY, LAWLER MODEL 516, ASSE 1070, OR AS APPROVED.
- 2 PROVIDE DIRT LEG, GAS COCK & UNION IN GAS LINE CONNECTION TO AC UNIT.



KEY PLAN
 1/16" = 1'-0"

GENERAL NOTES:

1. PROVIDE ASSE 1070 MIXING VALVE ON ALL HAND SINKS.
2. EXACT LOCATION OF FLOOR SINKS & DRAINS TO BE FIELD VERIFIED.
3. KITCHEN EQUIPMENT CONTRACTOR (KEC) SHALL FURNISH FAUCETS, BASKET WASTES, TWIST/LEVER WASTES, GAS HOSES, RESTRAINING CABLES, AND VACUUM BREAKER/SAFETY REGULATORS WITH THE NECESSARY COMPONENTS AND SUPPLY RIFPLES TO MAKE FINAL CONNECTIONS. INCLUDING THE INSTALLATION OF COMPONENTS NOT SHOWN OR SHIPPED LOOSE. REFER TO KEC DWGS. FOR FURTHER KITCHEN EQUIPMENT DETAILS.
4. PLUMBING CONTRACTOR SHALL VERIFY AND COORDINATE THE EXACT PLUMBING REQUIREMENTS FOR ALL NIC EQUIPMENT OUTSIDE THE KEC SCOPE PRIOR TO FINAL ROUGH-IN.
5. PLUMBING CONTRACTOR SHALL FURNISH AND INSTALL PRESSURE REDUCING VALVES, FLOW CONTROLS, BACK FLOW PREVENTION, RP2 (REDUCED PRESSURE ZONE) VALVES, WATER HAMMER ARRESTOR, GATE VALVES, FOR WATER CONNECTIONS AS REQUIRED BY AUTHORITIES HAVING JURISDICTION.
6. PLUMBING CONTRACTOR SHALL PROVIDE ROUGH-INS, FIELD INTERCONNECTIONS (EXPOSED AND UNEXPOSED), AND FINAL CONNECTIONS TO ALL FOODSERVICE EQUIPMENT.



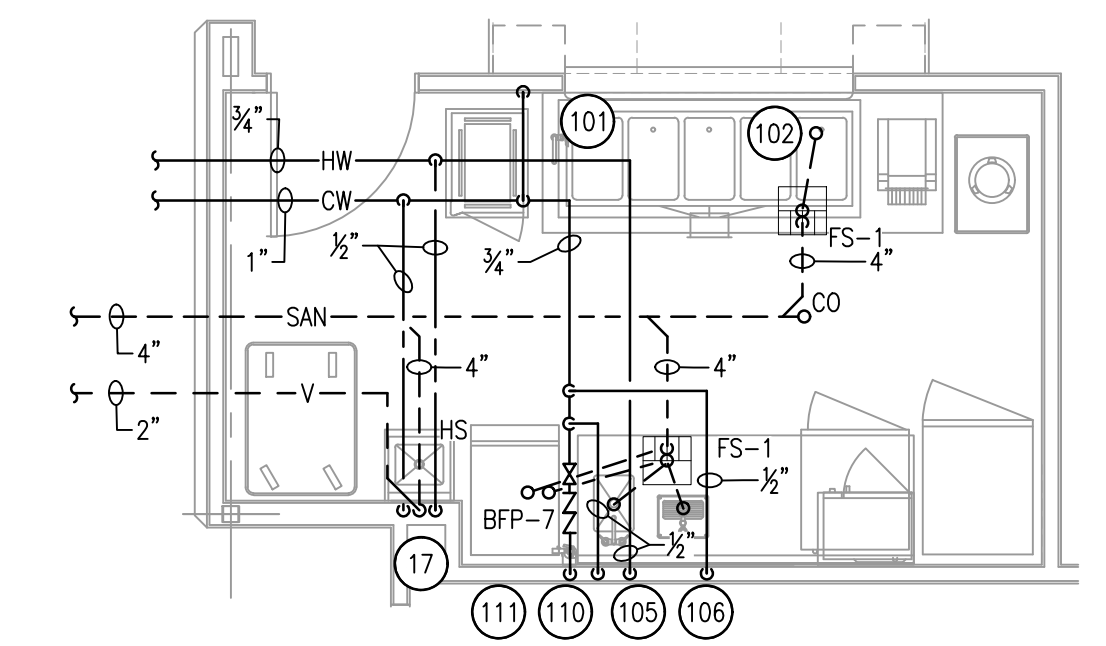
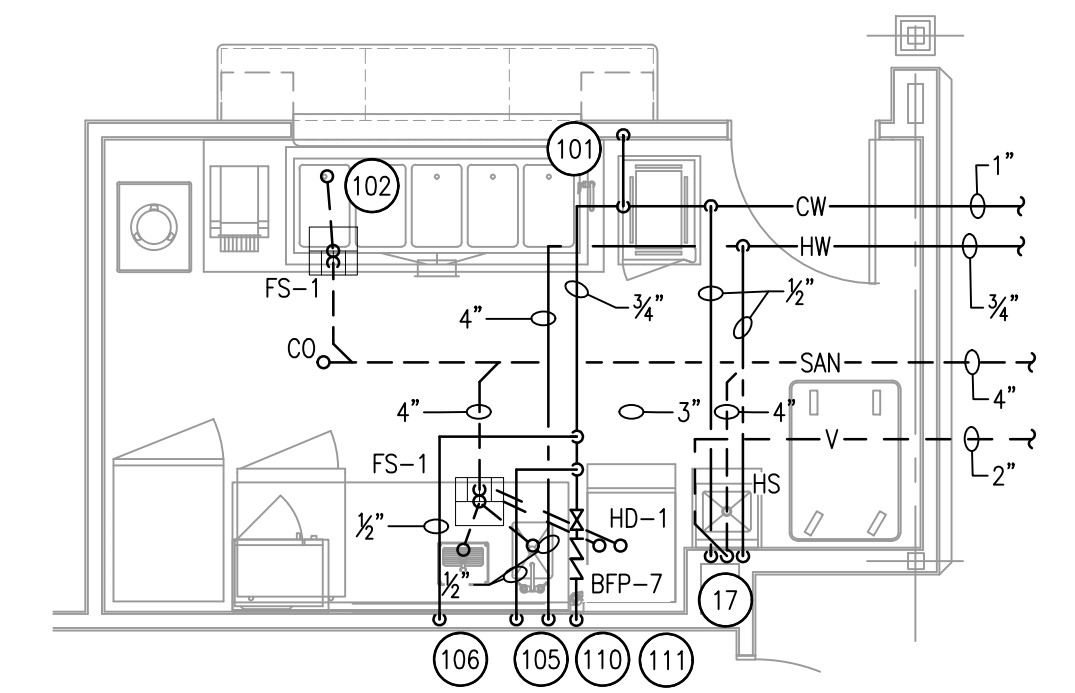
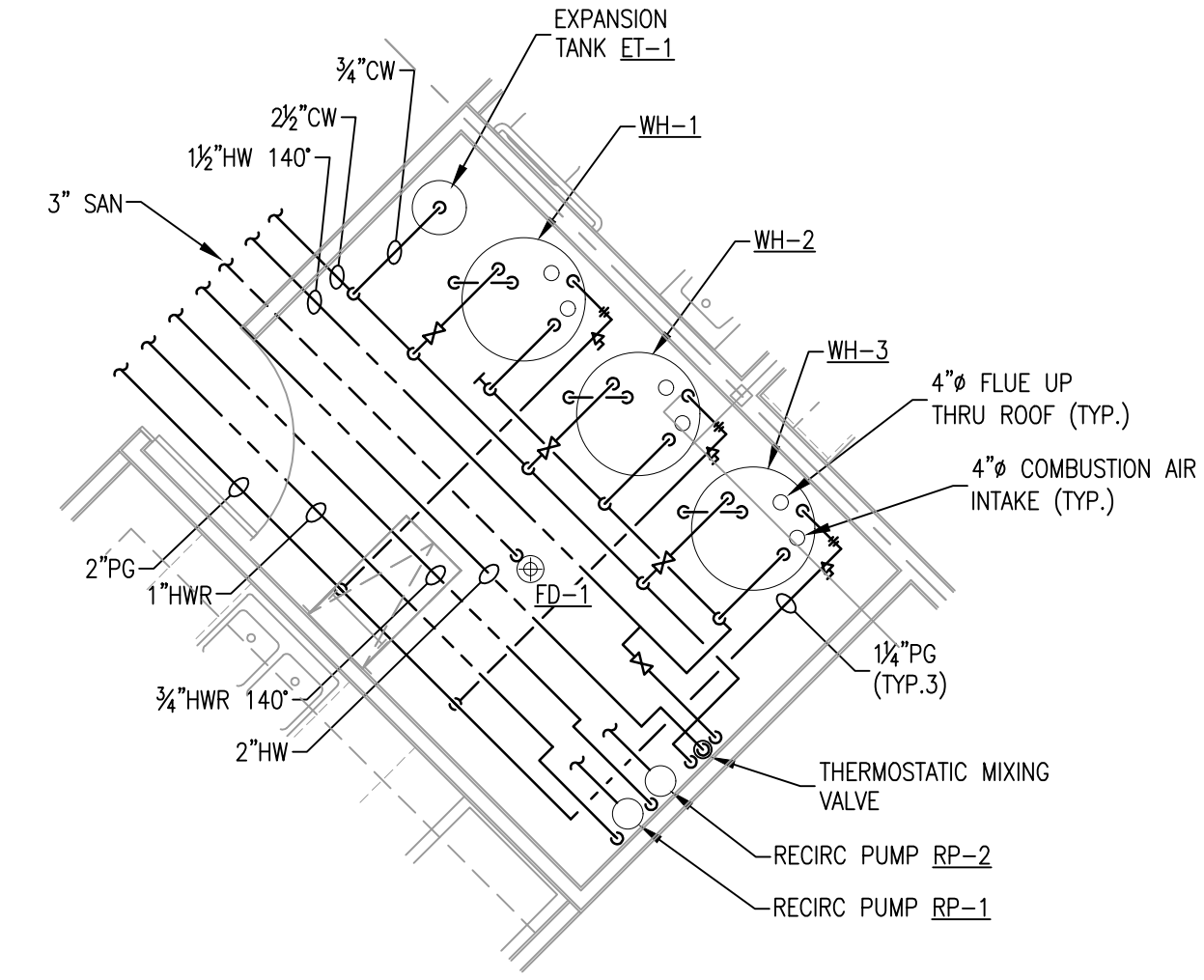
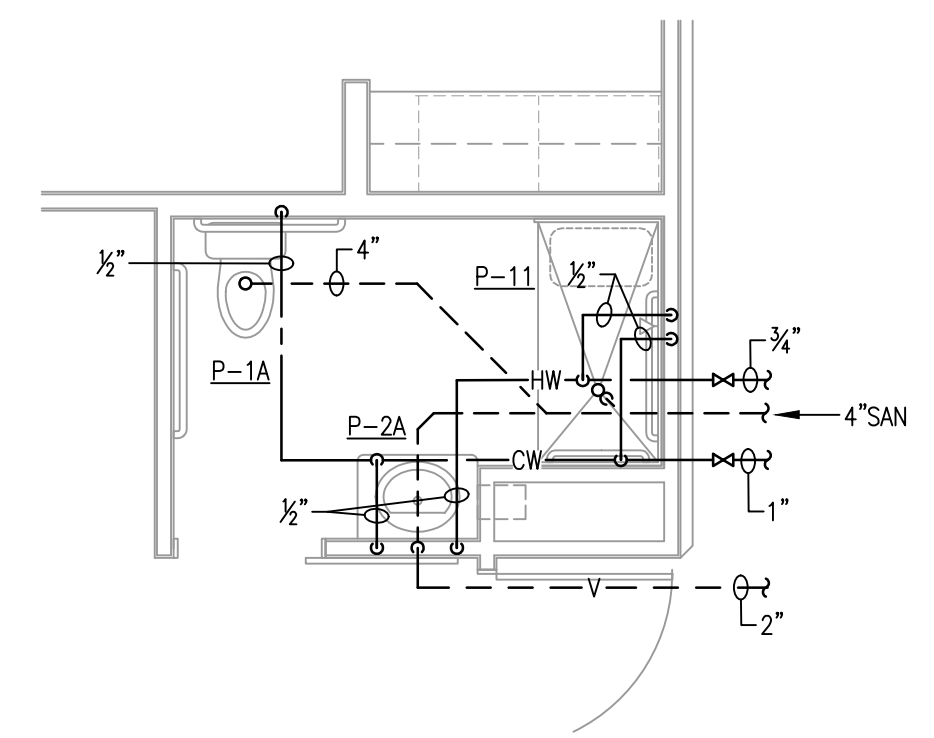
1 ENLARGED TOILET ROOM PLUMBING PLAN 'A'
Scale: 1/4"=1'-0"

2 ENLARGED TOILET ROOM PLUMBING PLAN 'B'
Scale: 1/4"=1'-0"

3 ENLARGED TOILET ROOM PLUMBING PLAN 'C'
Scale: 1/4"=1'-0"

4 ENLARGED TOILET ROOM PLUMBING PLAN 'D'
Scale: 1/4"=1'-0"

- CODED NOTES:
1. THERAPY TUB PROVIDED BY OWNER.



5 ENLARGED TOILET ROOM PLUMBING PLAN 'E'
Scale: 1/4"=1'-0"

6 ENLARGED MECHANICAL ROOM
Scale: 1/4"=1'-0"

7 ENLARGED SERVERY PLAN - NORTH WING
Scale: 1/4"=1'-0"

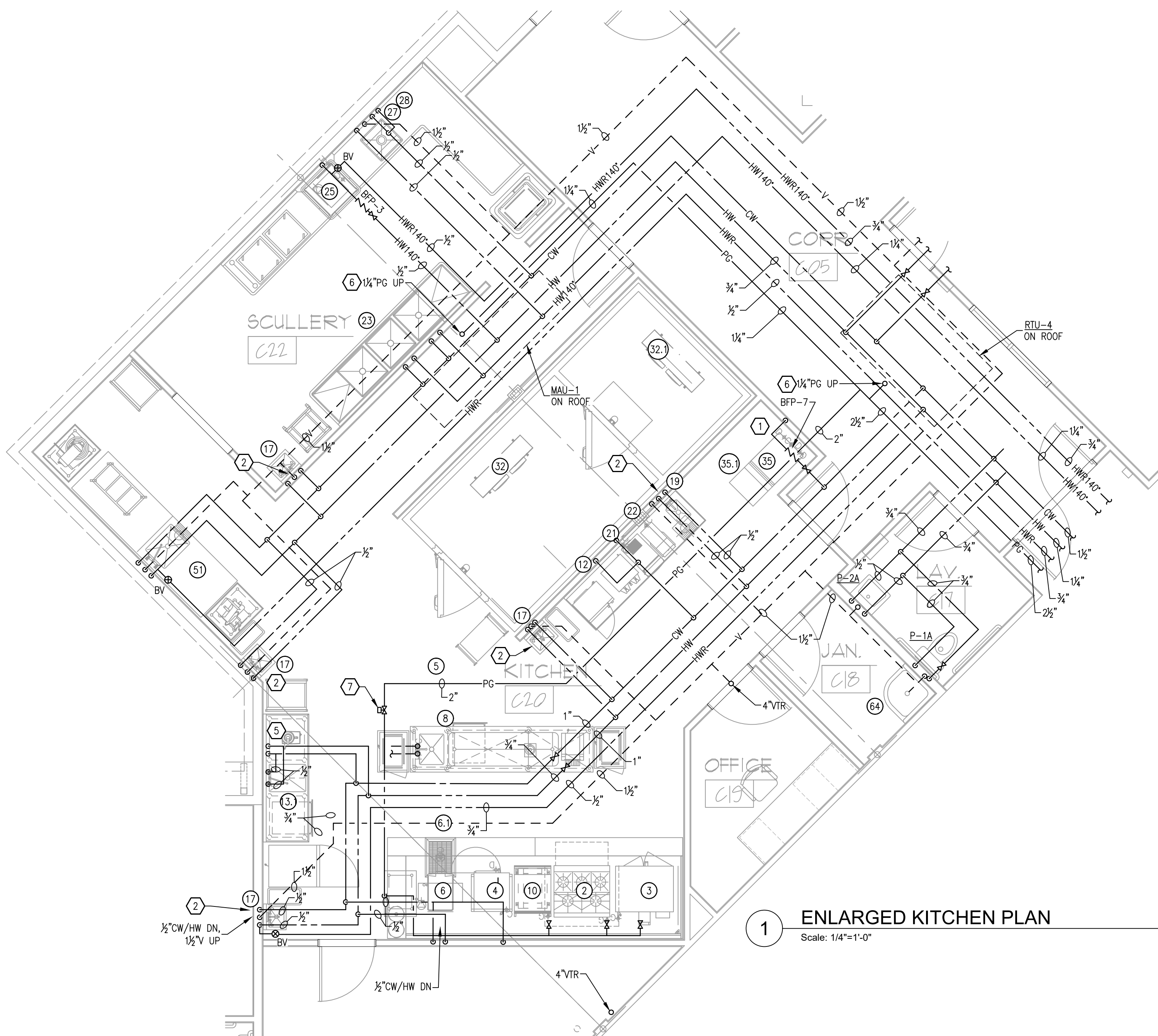
8 ENLARGED SERVERY PLAN - WEST WING
Scale: 1/4"=1'-0"

- NOTES:
1. RUN 4" FLUE & 4" COMBUSTION AIR UP THRU ROOF. TERMINATE ABOVE ROOF PER MANUFACTURER RECOMMENDATIONS.

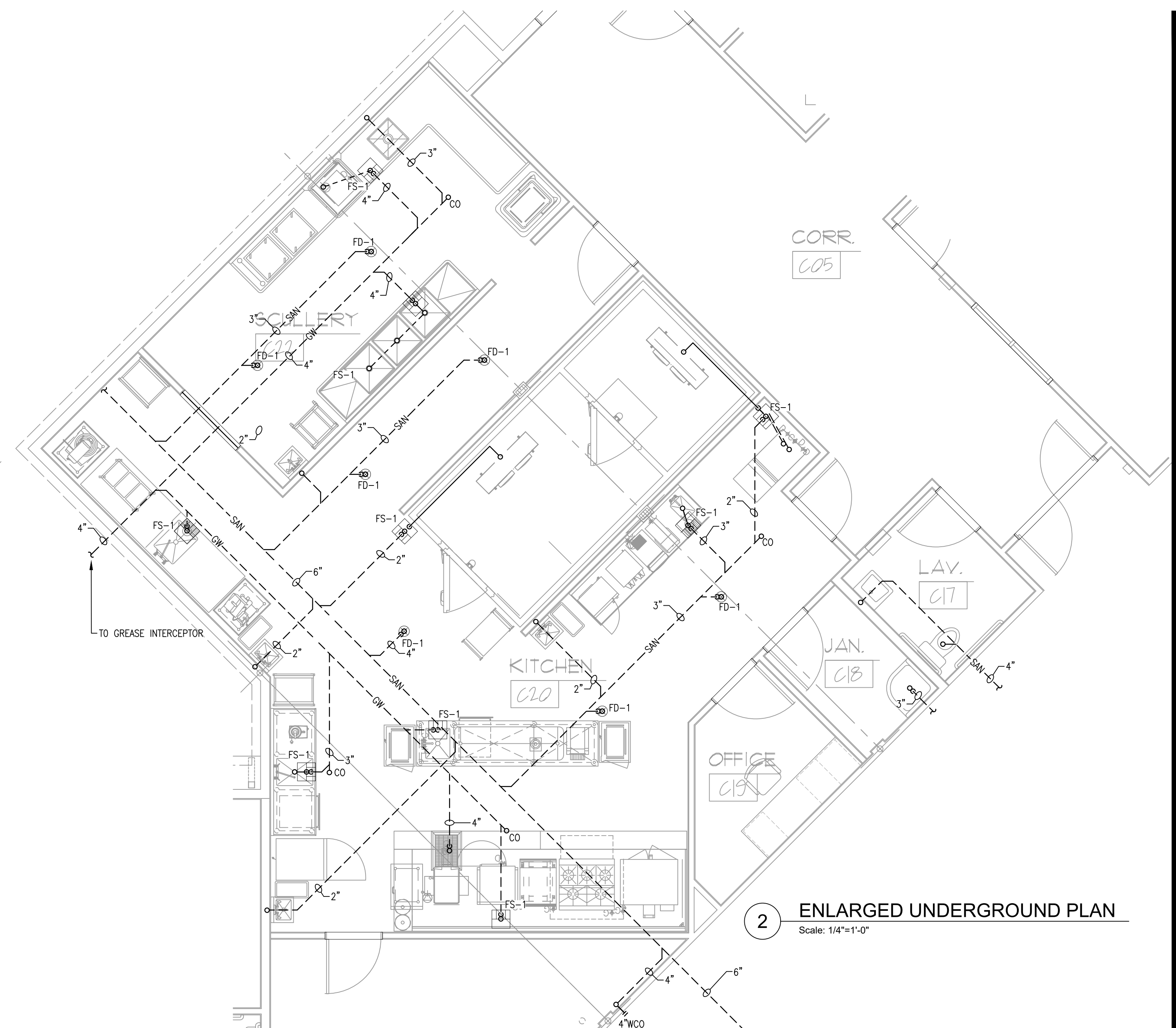
SERVERY CONNECTION SCHEDULE											
MARK	QTY	SERVICE	CW	HW	HW (140°)	SANITARY			GAS SIZE	BTUH	REMARKS
						DIRECT	INDIRECT	VENT			
17	2	HAND SINK	1/2"	1/2"	--	1-1/2"	--	1-1/2"	--	--	--
101	2	SERVING COUNTER W/FAUCET	1/2"	--	--	--	1"	--	--	--	1.
102	2	HOT FOOD WELL UNIT, DROP-IN	--	--	--	--	1"	--	--	--	1.
105	2	BEVERAGE COUNTER	1/2"	1/2"	--	--	1-1/2"	--	--	--	1.
106	2	GLASS FILLER	1/2"	--	--	--	1-1/4"	--	--	--	1.
110	2	ICE MAKER, CUBE STYLE	1/2"	--	--	--	3/8" & 3/4"	--	--	--	1.
111	2	ICE BIN	1/2"	--	--	--	3/4"	--	--	--	1.

REMARKS:
1. TO FS.

M.T. Denk



1 ENLARGED KITCHEN PLAN
 Scale: 1/4"=1'-0"



2 ENLARGED UNDERGROUND PLAN
 Scale: 1/4"=1'-0"

KITCHEN AREA CONNECTION SCHEDULE											
MARK	QTY	SERVICE	CW	HW	HW (140')	SANITARY			GAS SIZE	BTUH	REMARKS
						DIRECT	INDIRECT	VENT			
2	1	RANGE, RESTAURANT, GAS	--	--	--	--	--	--	3/4"	224,000	--
3	1	CONNECTION OVEN	--	--	--	--	--	--	3/4"	140,000	--
4	1	STEAMER, ATMOSPHERIC CONNECTED	1/2"	--	--	--	3/4"	--	--	--	1.
5	1	MJA SUPPLY FAN	1/2"	--	--	--	1"	--	1/2"	163,700	2.
6	1	TILTING SKILLET	1/2"	1/2"	--	--	--	--	--	--	--
6.1	1	FLOOR TROUGH	--	--	--	4"	--	--	--	--	--
8	1	S.S. WORK TABLE W/SINK	1/2"	1/2"	--	--	1-1/2"	--	--	--	1.
10	2	GRIDDLE, GAS, COUNTERTOP	1/2"	--	--	--	--	--	3/4"	60,000	1.
12	1	COFFEE BREWER	1/2"	--	--	--	--	--	--	--	1.
13	2	S.S. WORK TABLE W/SINK	1/2"	1/2"	--	--	1-1/2"	--	--	--	1.
17	4	HAND SINK	1/2"	1/2"	--	1-1/2"	--	1-1/2"	--	--	--
19	1	BEVERAGE TABLE	--	--	--	--	1-1/2"	--	--	--	1.

KITCHEN AREA CONNECTION SCHEDULE											
MARK	QTY	SERVICE	CW	HW	HW (140')	SANITARY			GAS SIZE	BTUH	REMARKS
						DIRECT	INDIRECT	VENT			
21	1	JUICE DISPENSER	1/2"	--	--	--	--	--	--	--	1.
22	1	TEA BREWER	1/2"	--	--	--	--	--	--	--	1.
23	1	3-COMPARTMENT SINK	(2)1/2"	(2)1/2"	--	--	(3)1-1/2"	1-1/2"	--	--	1.
25	1	DISH MACHINE	1/2"	--	--	2"	--	--	--	--	1.
27	1	DISPOSER	1/2"	--	--	2"	--	--	--	--	1.
28	1	PRE-RINSE FAUCET ASSY.	1/2"	1/2"	--	--	--	--	--	--	1.
32.2	1	WALK-IN COOLER EVAPORATOR	--	--	--	--	3/4"	--	--	--	1.
32.4	1	WALK-IN FREEZER EVAPORATOR	--	--	--	--	3/4"	--	--	--	1.
35	1	ICE MACHINE, CUBE-STYLE	1/2"	--	--	--	3/8"	--	--	--	1.
35.1	1	ICE BIN	--	--	--	--	3/4"	--	--	--	1.
51	1	S/S WORKTABLE	1/2"	1/2"	--	--	--	1-1/2"	--	--	1.
64	1	MOP SINK	1/2"	1/2"	--	2"	--	1-1/2"	--	--	1.

GENERAL NOTES:

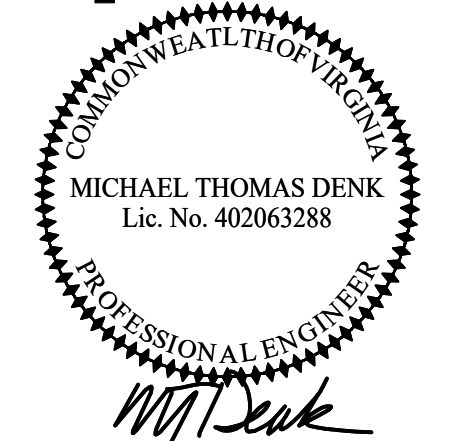
- PROVIDE ASSE 1070 MIXING VALVE ON ALL HAND SINKS.
- EXACT LOCATION OF FLOOR SINKS & DRAINS TO BE FIELD VERIFIED.
- KITCHEN EQUIPMENT CONTRACTOR (KEC) SHALL FURNISH FAUCETS, BASKET WASTES, TWIST/LEVER WASTES, GAS HOSES, RESTRAINING CABLES, AND VACUUM BREAKER/SAFETY REGULATORS WITH THE NECESSARY COMPONENTS AND SUPPLY NIPPLES TO MAKE FINAL CONNECTIONS INCLUDING THE INSTALLATION OF COMPONENTS NOT SHOWN OR SHIPPED LOOSE. REFER TO KEC DWGS. FOR FURTHER KITCHEN EQUIPMENT DETAILS.
- PLUMBING CONTRACTOR SHALL VERIFY AND COORDINATE THE EXACT PLUMBING REQUIREMENTS FOR ALL NIC EQUIPMENT OUTSIDE THE KEC SCOPE PRIOR TO FINAL ROUGH-IN.
- PLUMBING CONTRACTOR SHALL FURNISH AND INSTALL PRESSURE REDUCING VALVES, FLOW CONTROLS, BACK FLOW PREVENTION, RPZ (REDUCED PRESSURE ZONE) VALVES, WATER HAMMER ARRESTOR, GATE VALVES, FOR WATER CONNECTIONS AS REQUIRED BY AUTHORITIES HAVING JURISDICTION.
- PLUMBING CONTRACTOR SHALL PROVIDE ROUGH-INS, FIELD INTERCONNECTIONS (EXPOSED AND UNEXPOSED), AND FINAL CONNECTIONS TO ALL FOODSERVICE EQUIPMENT.

CODED NOTES:

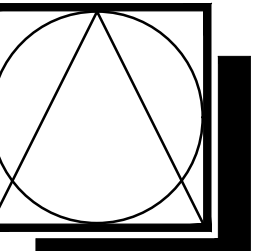
- RUN 1/2" CW TO ICE MAKER & PROVIDE SHUT-OFF VALVE & DOUBLE CHECK BACK FLOW PREVENTER.
- PROVIDE POINT-OF-USE THERMOSTATIC MIXING VALVE ASSE 1070, LAWLER 516 OR AS APPROVED. TYPICAL ALL HAND SINKS.
- RUN 1/2" CW TO COFFEE MAKER, JUICE & BEVERAGE DISPENSER, & PROVIDE SHUT-OFF VALVE & DOUBLE CHECK BACK FLOW PREVENTER.
- 2" GAS LINE DOWN ALONG WALL AT 1'-0" AFF. RUN GAS MANIFOLD ALONG WALL. CONNECT GAS LINES TO APPLIANCES WITH QUICK CONNECT FITTINGS AND GAS COCK. REFER TO KITCHEN EQUIPMENT SCHEDULE FOR SIZES.
- 1/2" HW & CW DOWN IN WALL. CONNECT 1/2" HW & CW TO HAND SINK AND 1/2" HW & CW DOWN THRU SLAB AND UNDER FLOOR TO STAINLESS STEEL SINK AT WORK TABLE.
- FOR LOCATION OF EQUIPMENT ON ROOF SEE DRAWING M1.2.
- SOLENOID GAS SHUT-OFF VALVE.

REMARKS:
 1. TO FS.
 2. MAKE UP AIR UNIT.

NEW 90 BED SKILLED NURSING FACILITY
SMITH MOUNTAIN LAKE HEALTH & REHAB CENTER
 STATE RTE 616
 MONETA, FRANKLIN COUNTY, VIRGINIA

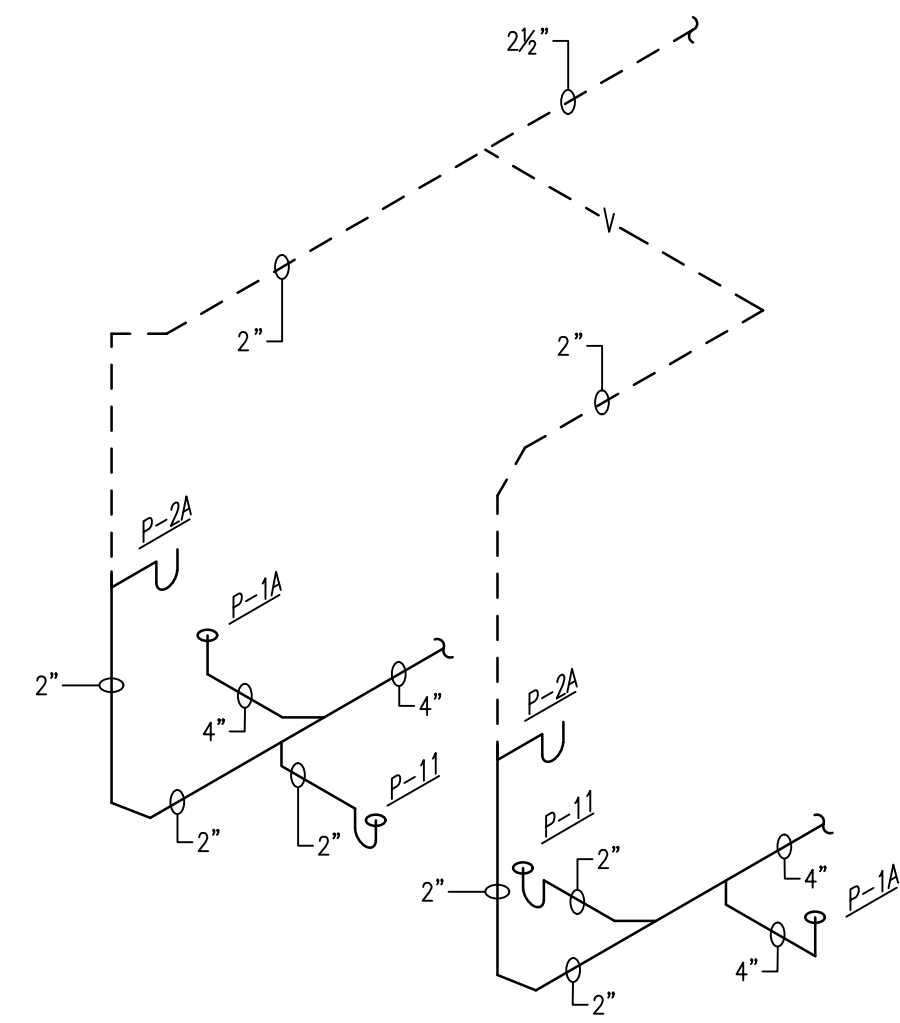


DSCA PROJECT NO.
 23046

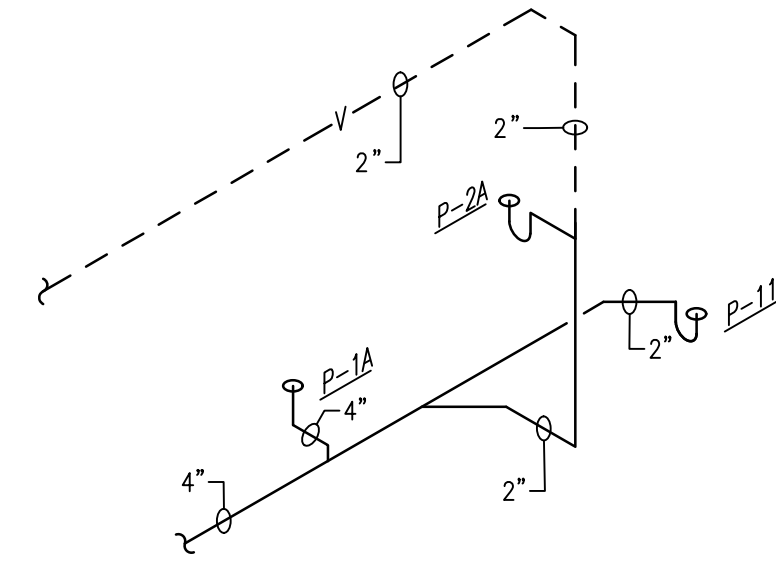


DSC
 ARCHITECTS
 401 FRONT STREET
 BEREA, OHIO 44017
 PHONE: 440.835.3957
 mail@dscarchitects.com

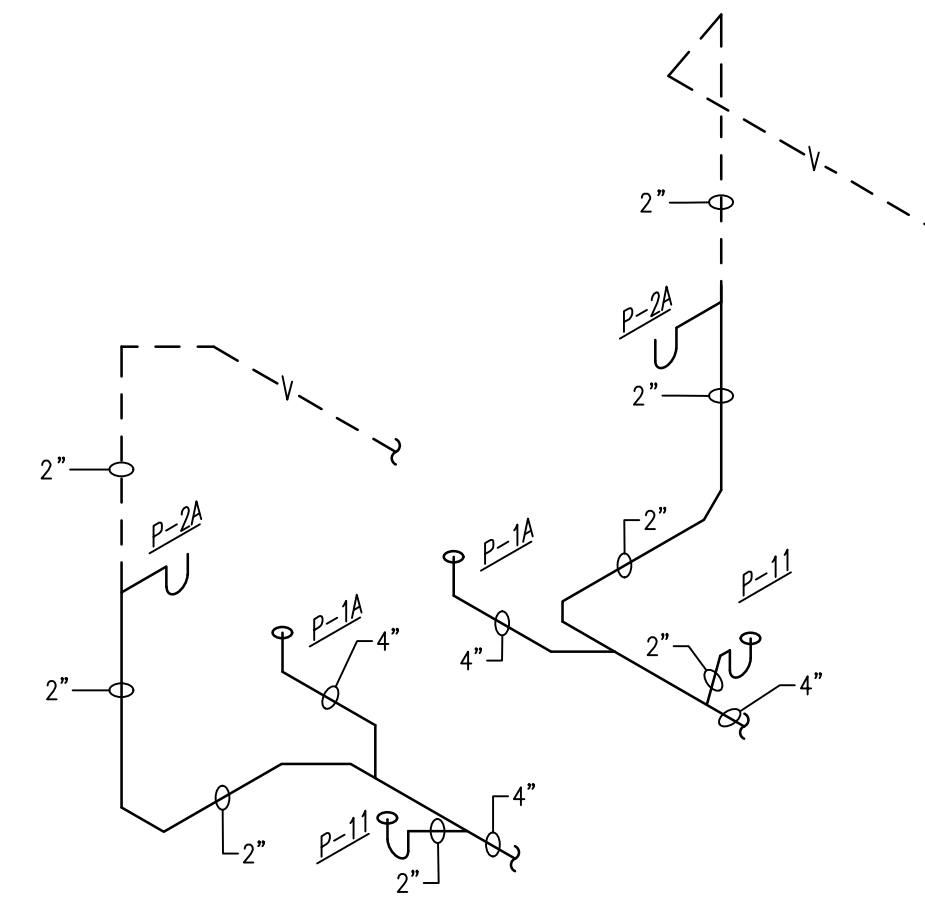
DATE:
 PERMIT SET:
 01/15/25



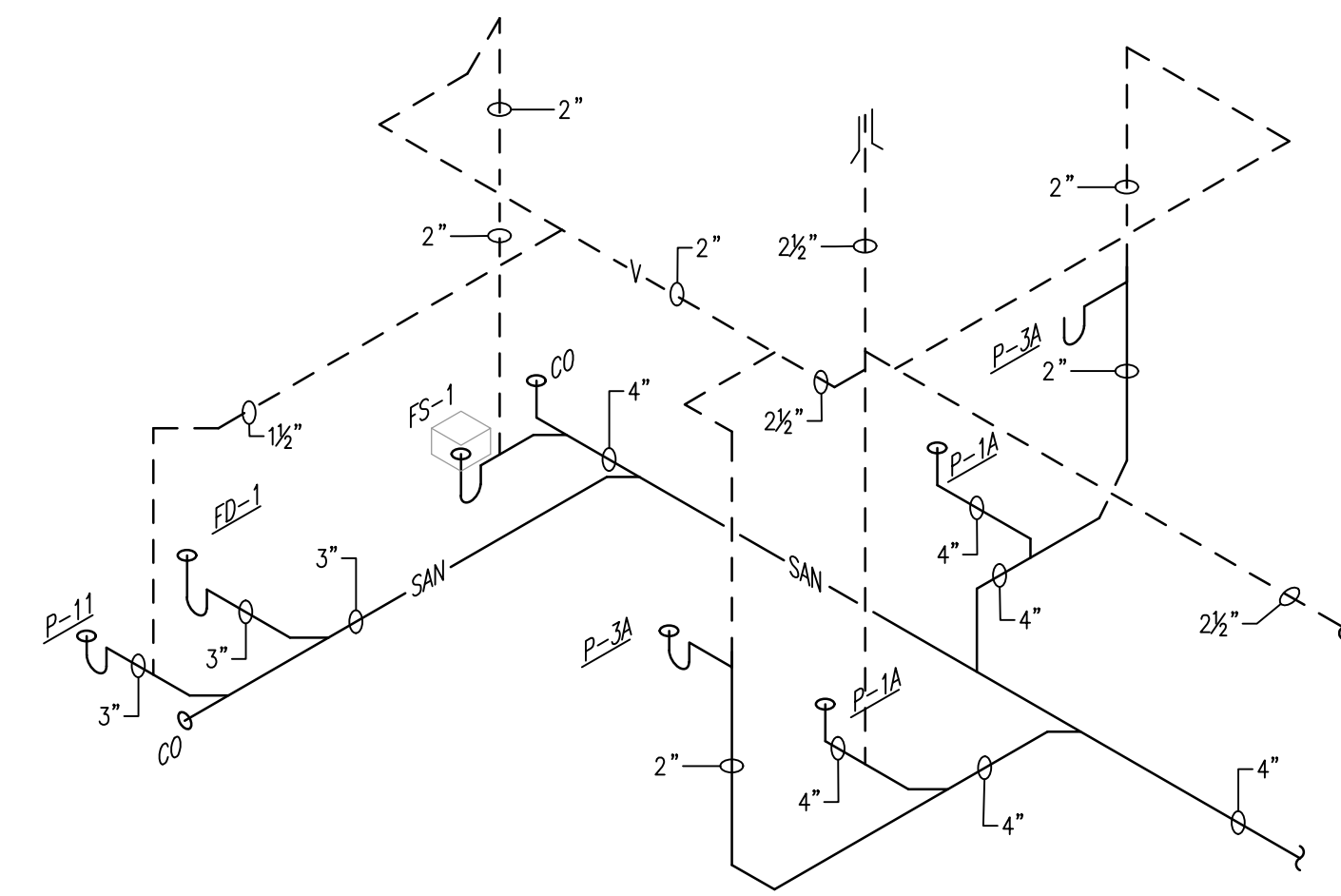
1 **STACK DIAGRAM 'A'**
 NTS



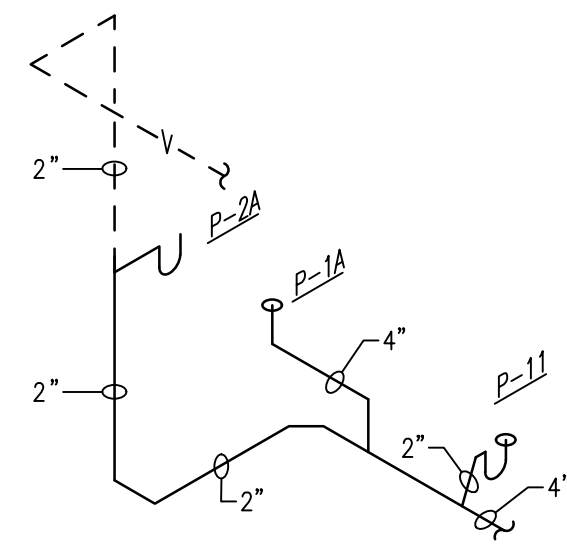
2 **STACK DIAGRAM 'B'**
 NTS



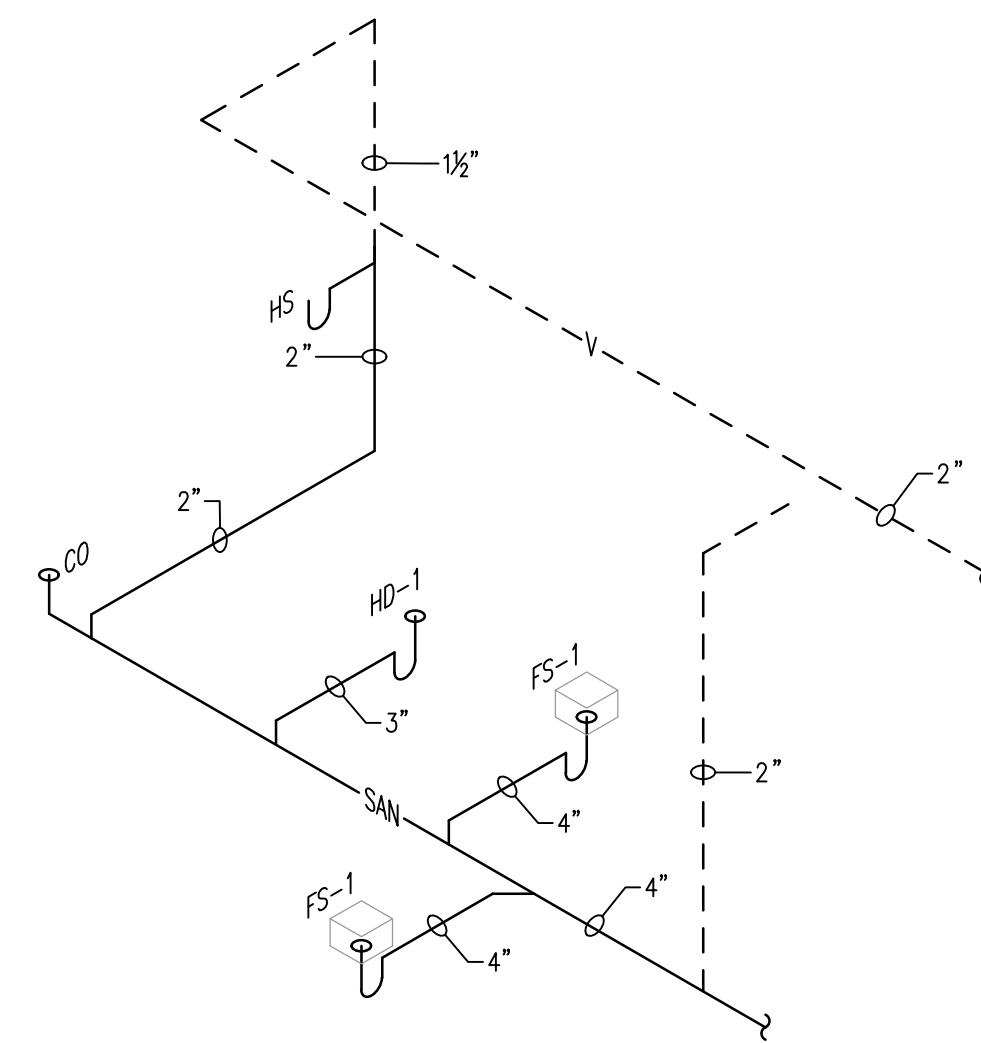
3 **STACK DIAGRAM 'C'**
 NTS



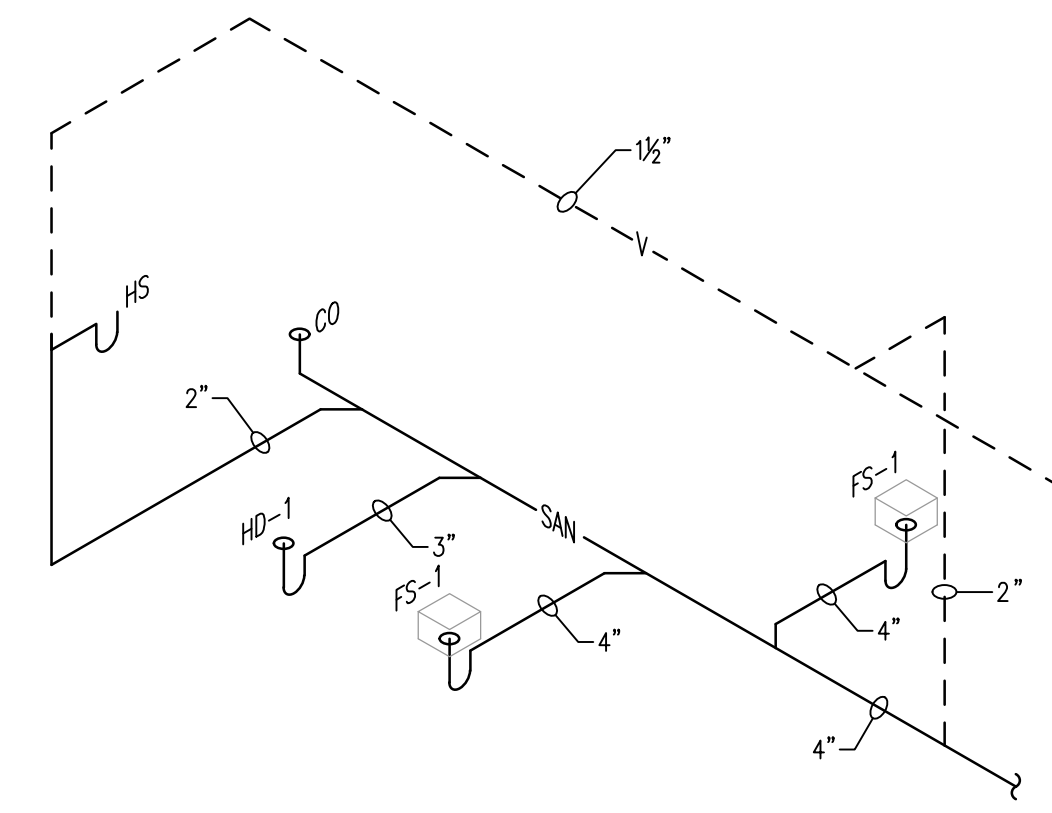
4 **STACK DIAGRAM 'D'**
 NTS



5 **STACK DIAGRAM 'E'**
 NTS

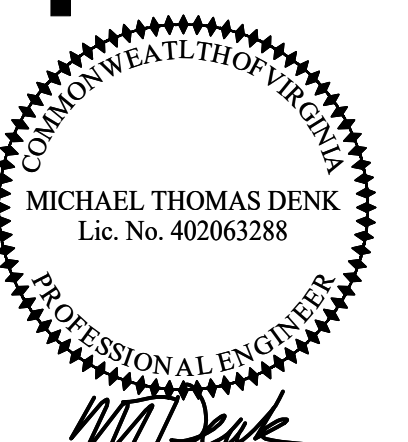


5 **WEST WING SERVERY STACK DIAGRAM**
 NTS



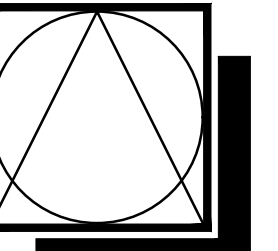
6 **NORTH WING SERVERY STACK DIAGRAM**
 NTS

NEW 90 BED SKILLED NURSING FACILITY
SMITH MOUNTAIN LAKE HEALTH & REHAB CENTER
 STATE RTE 616
 MONETA, FRANKLIN COUNTY, VIRGINIA



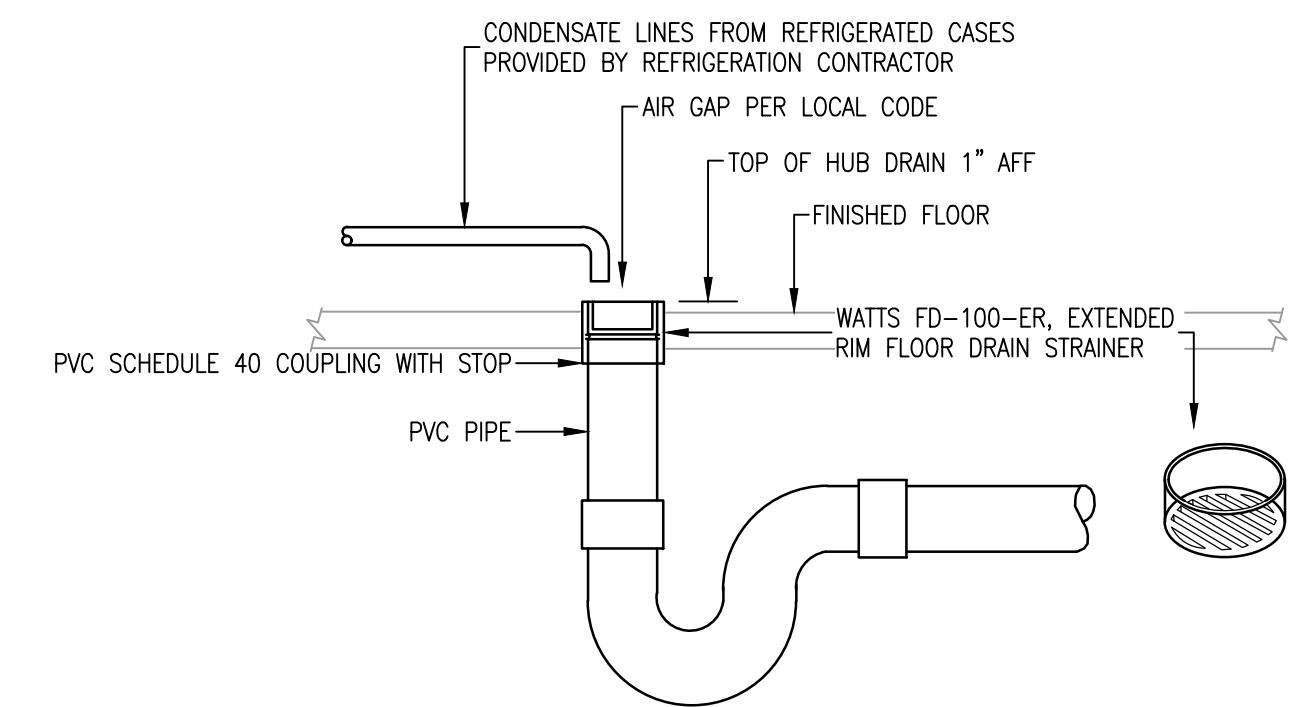
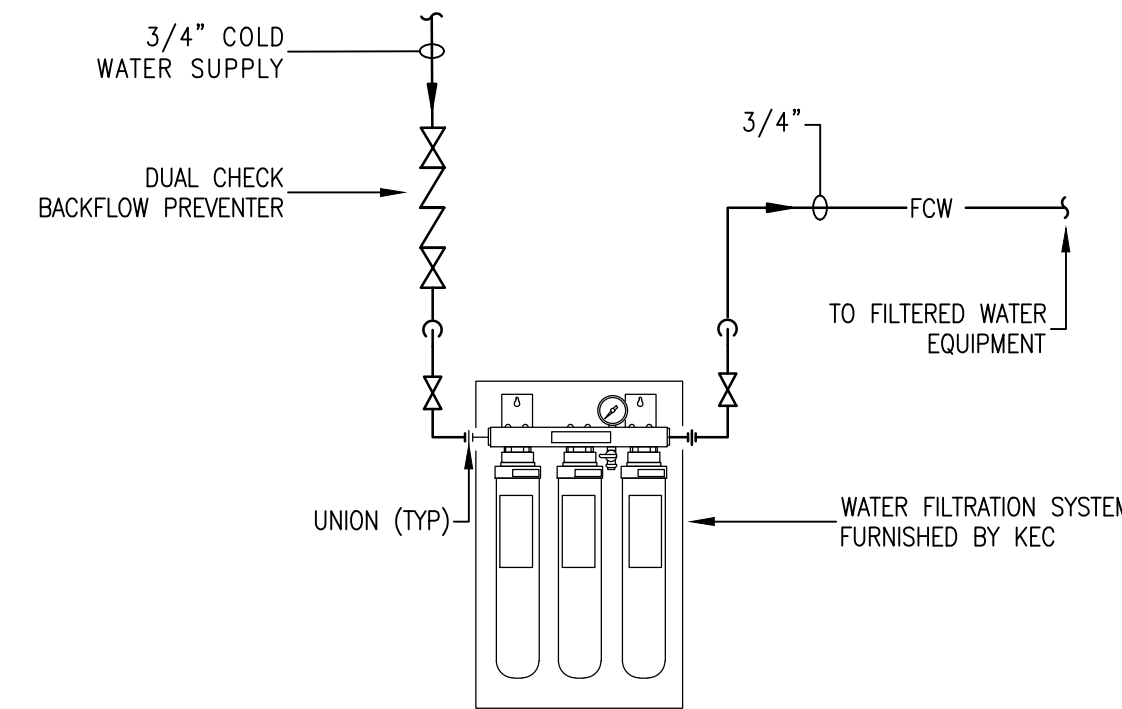
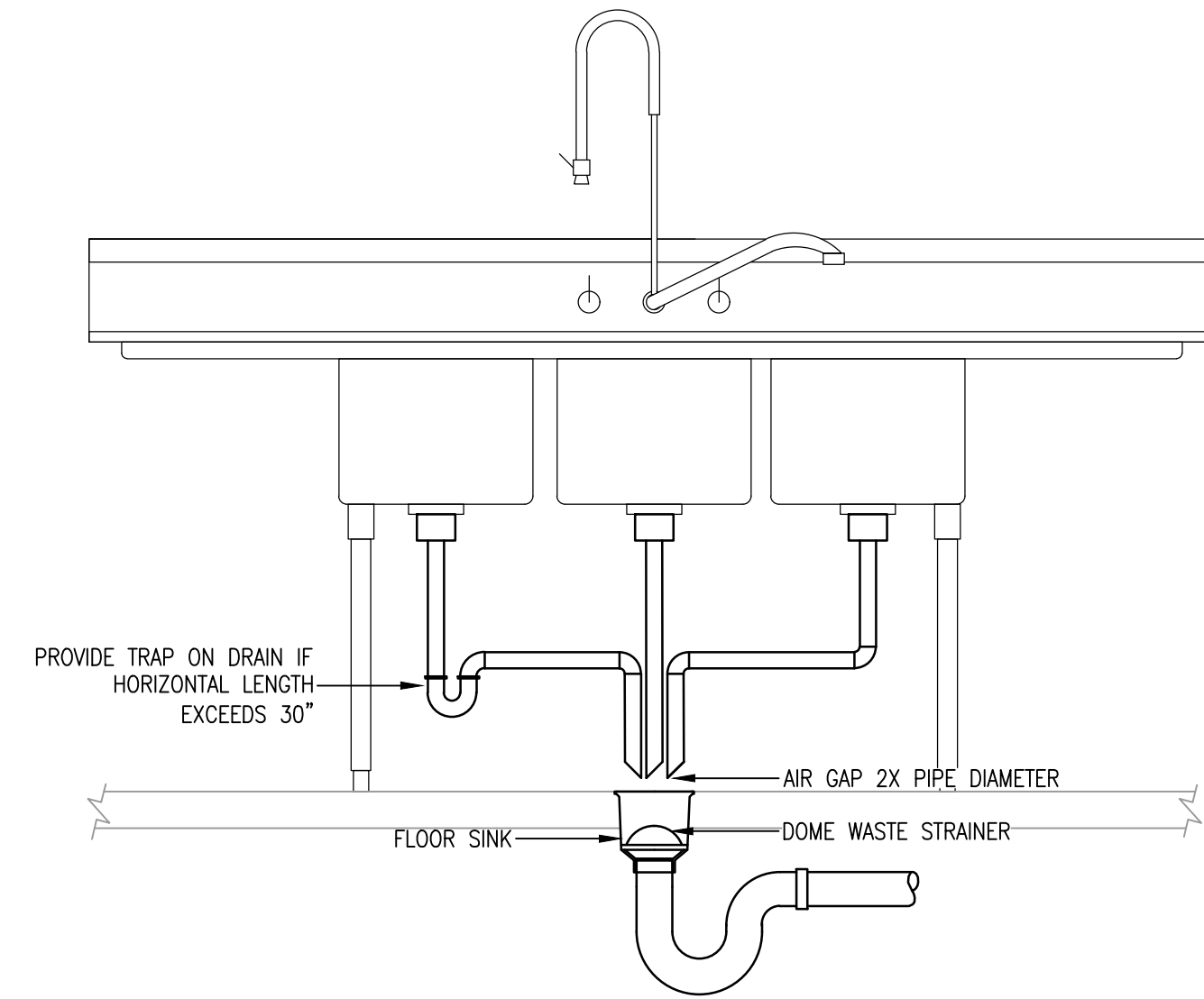
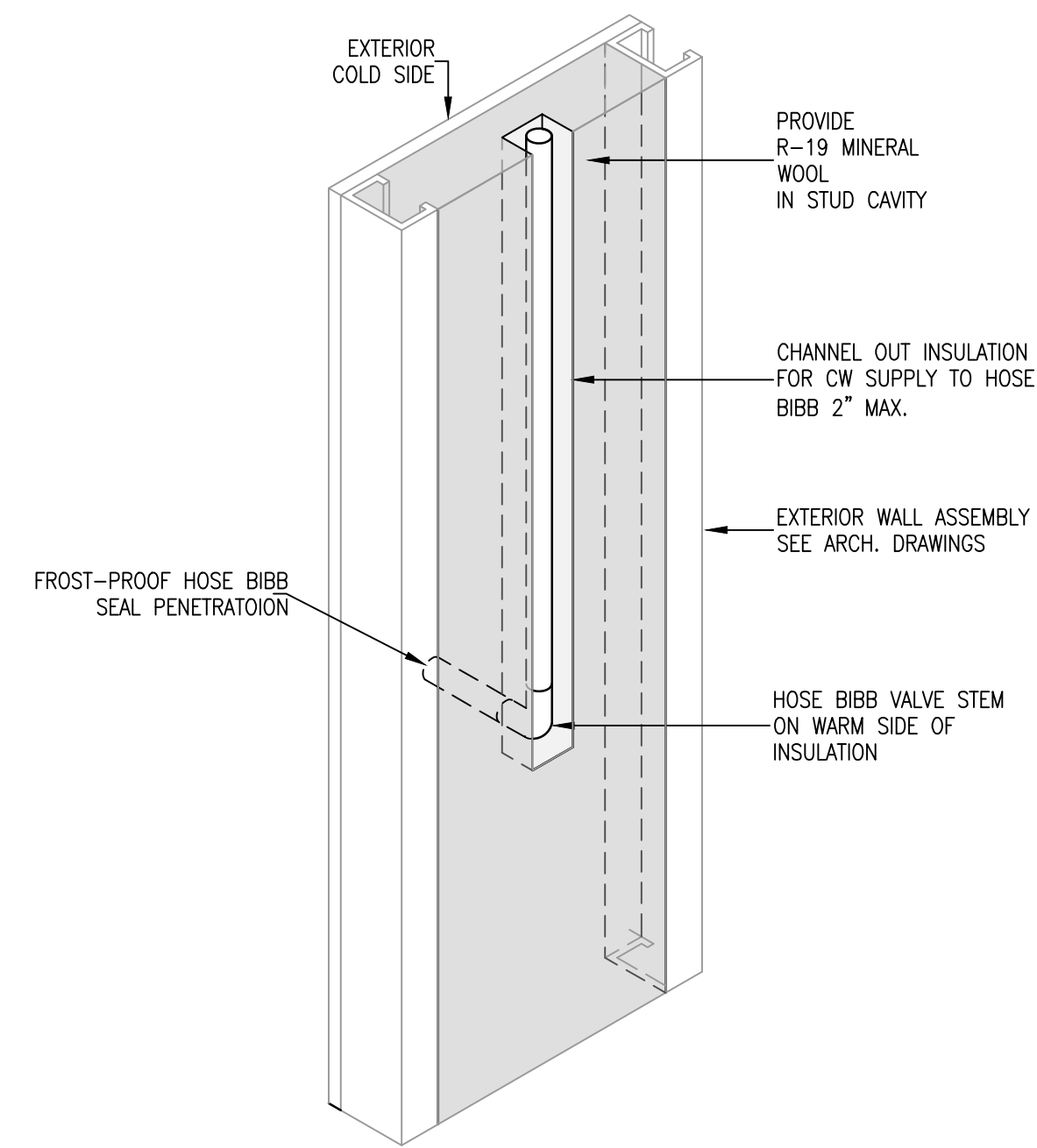
MT Denk

DSCA PROJECT NO.
 23046



DSC ARCHITECTS
 401 FRONT STREET
 BEREA, OHIO 44017
 PHONE: 440.835.3957
 mail@dscarchitects.com

DATE: 01/15/25
 PERMIT SET:

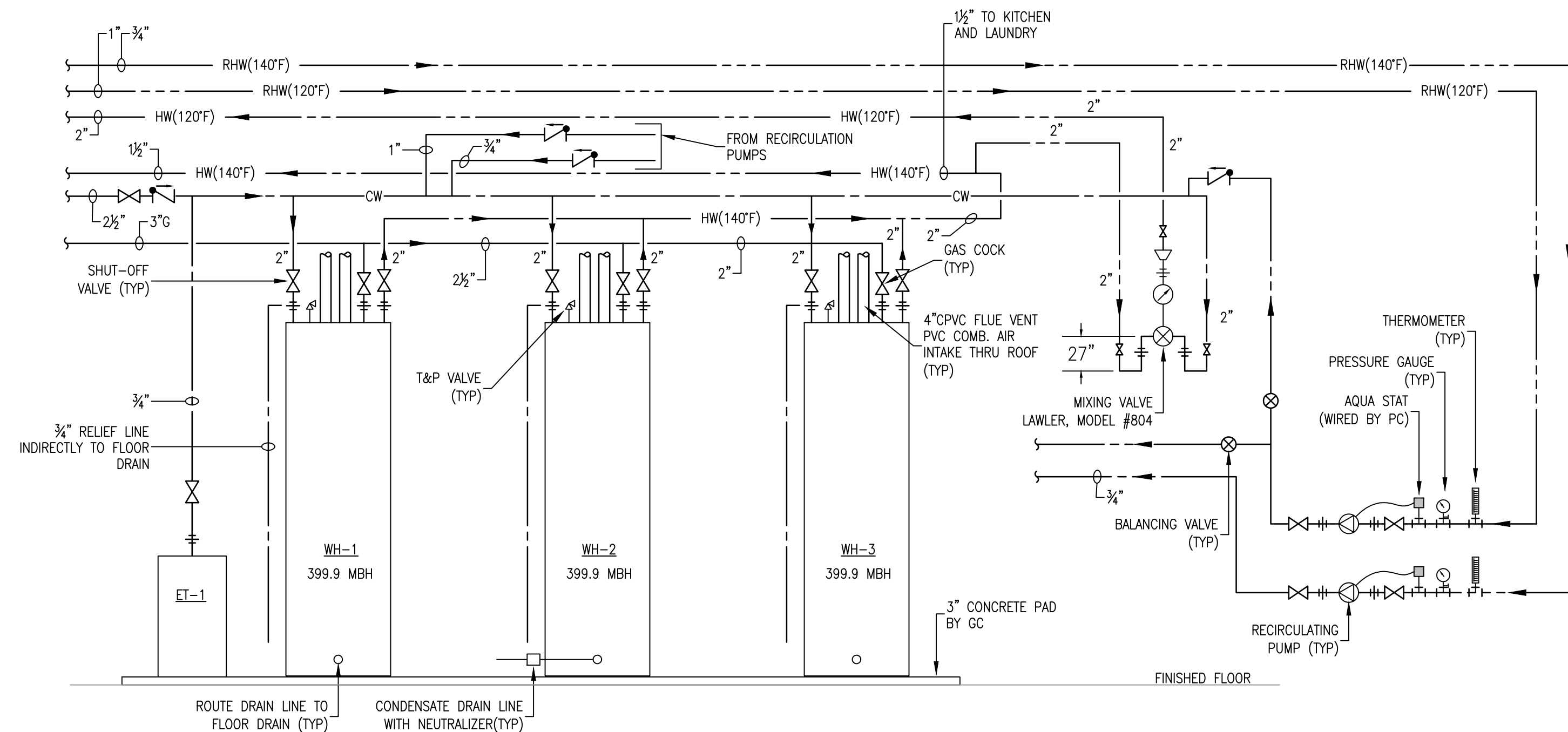
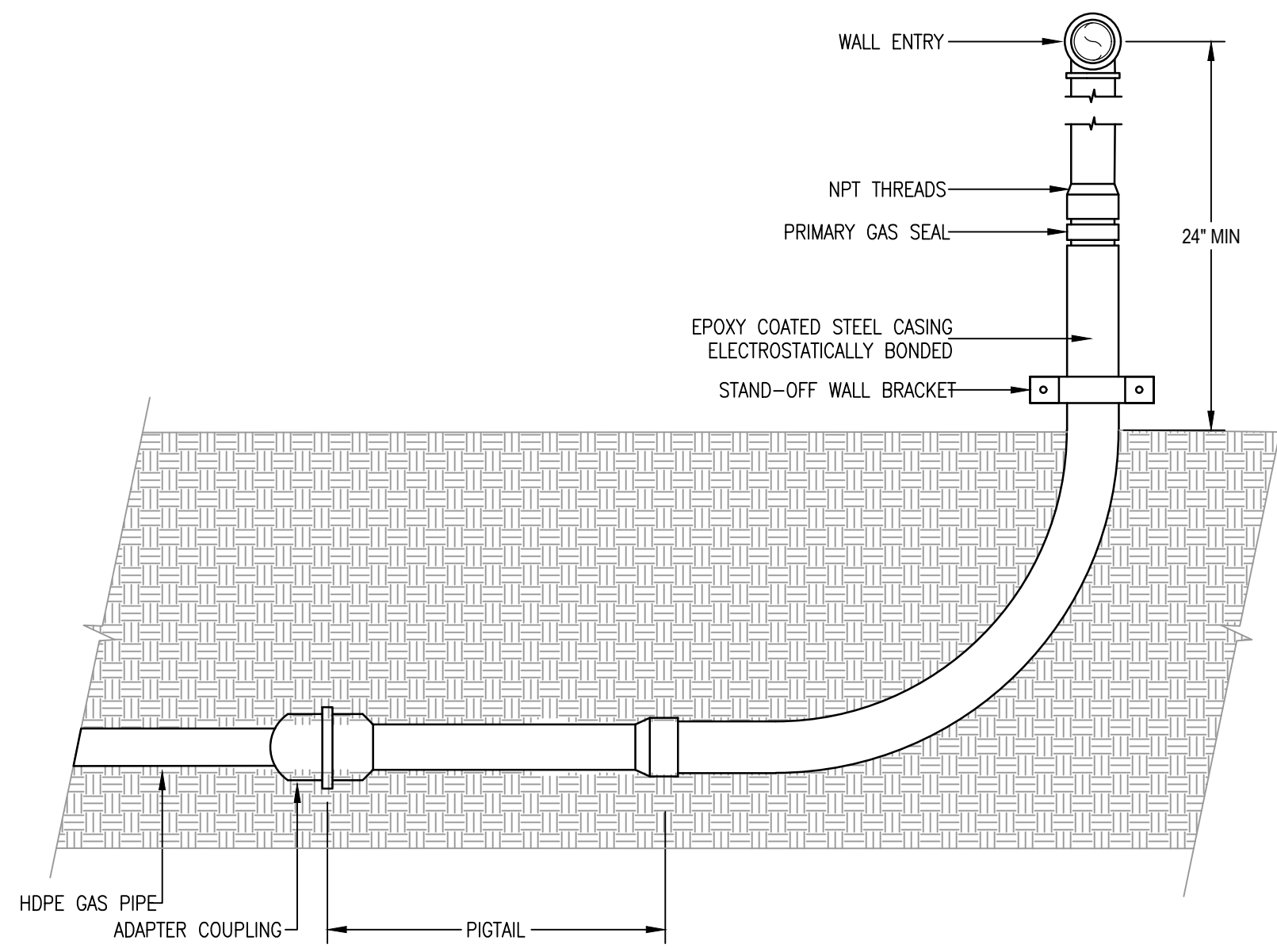


1 FROST-PROOF HOSE BIBB DETAIL
 SCALE: NTS

2 INDIRECTLY CONNECTED FOOD PREP SINK DETAIL
 Scale: NTS

3 FOOD SERVICE WATER FILTER PIPING SCHEMATIC
 Scale: NTS

4 COMBINATION WASTE & VENT CONDENSATE DRAIN
 Scale: NTS

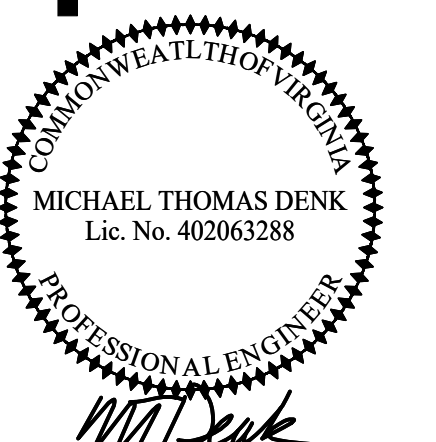


5 ANODE-LESS LIQUID PROPANE GAS RISER DETAIL
 SCALE: NTS

6 DOMESTIC WATER HEATER DETAIL
 NTS

- NOTE:**
1. WATER HEATER CONNECTION LOCATIONS VARY BY MANUFACTURER
 2. BOTTOM FED TANK TYPE WATER HEATERS & STORAGE TANKS SHALL BE PIPED WITH ANSI 2-21.22 VACUUM RELIEF VALVE WATTS #N36-MI OR EQUIVALENT.
 3. SEE SCHEDULE FOR WATER HEATER MANUFACTURER.
 4. SEE SCHEDULE FOR RECIRCULATION PUMP.

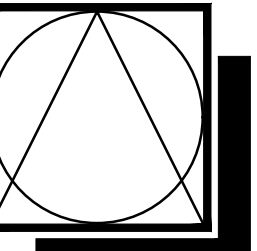
NEW 90 BED SKILLED NURSING FACILITY
SMITH MOUNTAIN LAKE HEALTH & REHAB CENTER
 STATE RTE 616
 MONETA, FRANKLIN COUNTY, VIRGINIA



Michael Thomas Denk

DSCA PROJECT NO. 23.046

P5.1



DSC ARCHITECTS
401 FRONT STREET
BEREA, OHIO 44017
PHONE: 440.835.3957
mail@dscarchitects.com

DATE: 01/15/25
PERMIT SET:

PLUMBING INSULATION SCHEDULE				
SERVICE	SIZE	THICKNESS	MATERIAL	JACKET
DOMESTIC COLD WATER (INSIDE)	4" AND LESS	1/2"	MINERAL FIBER	FACTORY - ASJ SSL
DOMESTIC HOT WATER	1-1/4" AND LESS	1"	MINERAL FIBER	FACTORY - ASJ SSL
DOMESTIC HOT WATER	1-1/2" AND LARGER	1-1/2"	MINERAL FIBER	FACTORY - ASJ SSL
PRIMARY STORM DRAINS (HORZ)	ALL SIZES	1"	MINERAL FIBER	FACTORY - ASJ SSL
SECONDARY STORM DRAINS	ALL SIZES	1"	MINERAL FIBER	FACTORY - ASJ SSL
CONDENSATE DRAINS	ALL SIZES	1/2"	FLEXIBLE ELASTOMERIC	N/A
HYDROPNEUMATIC TANKS	ALL SIZES	1"	FLEXIBLE ELASTOMERIC	N/A

ALL PLUMBING SYSTEMS NOTED ABOVE SHALL BE INSULATED AS INDICATED UNLESS NOTED OTHERWISE. REFER TO SPECIFICATION SECTION 220700 FOR ADDITIONAL REQUIREMENTS.

PLUMBING PIPE AND FITTING SCHEDULE				
SERVICE	SIZE	PIPE MATERIAL	FITTINGS	JOINTS
DOMESTIC WATER	4" AND LESS	TYPE L COPPER	WROUGHT COPPER	SOLDERED
DOMESTIC WATER	2" AND LESS	TYPE L COPPER	WROUGHT COPPER	PRESS
DOMESTIC WATER	2" AND LESS	PEX	ENGINEERED POLYMER	COLD EXPANSION WITH RING
SANITARY DWV ABOVEGROUND	4" AND LESS	PVC DWV	PVC DWV SOCKET	SOLVENT WELD
SANITARY DWV ABOVEGROUND	4" AND LESS	SCHEDULE 40 CAST-IRON	NO-HUB CAST-IRON	STANDARD NO-HUB
SANITARY DWV ABOVEGROUND	6" AND LARGER	SCHEDULE 40 CAST-IRON	NO-HUB CAST-IRON	HEAVY DUTY NO-HUB
SANITARY DWV UNDERGROUND	6" AND LESS	PVC DWV	PVC DWV SOCKET	SOLVENT WELD
LP GAS	2-1/2" AND LESS	SCHEDULE 40 BLACK STEEL	MALLEABLE IRON	THREADED
LP GAS	3" AND LARGER	SCHEDULE 40 BLACK STEEL	WROUGHT STEEL	WELDED

PVC AND PEX PIPING SHALL NOT BE USED WITHIN A RETURN AIR PLENUM.

MARK	FIXTURE	SUPPLIES		WASTE		REMARKS
		HW	CW	SAN	VENT	
P-1A	WATER CLOSET FLUSH TANK	--	1/2"	4"	2"	--
P-2A	LAVATORY SELF-RIMMING	1/2"	1/2"	1-1/2"	1-1/4"	--
P-3A	LAVATORY WALL MOUNT	1/2"	1/2"	1-1/2"	1-1/4"	--
P-4	SINK COUNTERTOP	1/2"	1/2"	1-1/2"	1-1/4"	--
P-5	SINK COUNTERTOP	1/2"	1/2"	1-1/2"	1-1/4"	--
P-6	CLINIC SERVICE SINK	1/2"	1/2"	3"	1-1/2"	--
P-7	SINK SHAMPOO BOWL	1/2"	1/2"	1-1/2"	1-1/4"	--
P-8	SINK COUNTERTOP	1/2"	1/2"	1-1/2"	1-1/4"	--
P-9	MOP BASIN	1/2"	1/2"	3"	1-1/2"	--
P-10	LAUNDRY TUB	1/2"	1/2"	1-1/2"	1-1/4"	--
P-11	SHOWER STALL	1/2"	1/2"	2"	1-1/4"	--
P-12	WHIRLPOOL BATH	1/2"	1/2"	2"	1-1/4"	--
P-13	ELECTRIC WATER COOLER	--	1/2"	1-1/2"	1-1/4"	--
P-14	WASHER BOX	3/4"	1/2"	2"	--	--
P-15	HOSE BIBB	--	3/4"	--	--	--

FIXTURE SPECIFICATIONS					
P-1A	WATER CLOSET, FLUSH TANK; AMERICAN STANDARD "CADET" RIGHT HEIGHT #2998.012 ELONGATED TOILET 1.6 GPF VITREOUS CHINA, FLOOR MOUNTED WCLOSED COUPLED TANK AND ELONGATED BOWL WITH "RISE AND SHINE" PLASTIC OPEN FRONT SEAT AND COVER. #5325.024 FLUSH CONTROL LEVER ON WIDE SIDE OF TOILET (AWAY FROM WALL).				
P-2A	LAVATORY, SELF RIMMING; LAVATORY PROVIDED WITH COUNTERTOP. PROVIDE MOEN FAUCET #8800 (0.5) GPM FLOW, GRID STRAINER AND TRAP. INTEGRAL BOWL BY OTHERS.				
P-3A	LAVATORY, WALL MOUNT; AMERICAN STANDARD "LUCERNE" #0355.012, 4" CENTERS WITH MOEN SINGLE LEVEL FAUCET MOEN 8430F05, 0.5 GPM, GRID STRAINER, WALL HANGER, 3/8" ANGLE SUPPLY COCKS AND RISERS. MOUNT AT ADA REQUIRED HEIGHT.				
P-4	SINK, COUNTERTOP; ELKAY #ELU1317, SINGLE BOWL 20 GAUGE STAINLESS STEEL SINK, OVERALL SIZE 13" x 16 1/2", MOEN 8278 FAUCET, 0.5 GPM FLOW, WRIST-BLADE HANDLES, GRID STRAINER.				
P-5	SINK, COUNTERTOP; ELKAY #PSR1722, SINGLE BOWL 20 GAUGE STAINLESS STEEL SINK, OVERALL SIZE 17" x 22", INSIDE BOWL SIZE 13 1/2" x 16" x 7 1/2" DEEP AND L-35 BASKET STRAINER. PROVIDE WITH MOEN 8278 GOOSENECK TWO HANDLE FAUCET, GRID STRAINER, & P-TRAP.				
P-6	CLINIC SERVICE SINK; AMERICAN STANDARD #9504.010 CLINIC SERVICE SINK. PROVIDE WITH SLOAN ROYAL #117HYVO FLUSHMETER, #7880.024 BED PAN WASHER ASSEMBLY. MOUNT ON 10" HIGH CONCRETE BASE.				
P-7	SINK, SHAMPOO BOWL; COLLINS SQUARE PORCELAIN SHAMPOO BOWL, W/670 SINGLE HANDLE FAUCET, SPRAY HOSE, VACUUM BREAKER, DRAIN ASSEMBLY AND MOUNTING BRACKET. 19"W x 20"D x 10" H TRADITIONAL SIDEWALL BOWL.				
P-8	SINK, COUNTERTOP; ELKAY #ELUH3118, DOUBLE BOWL 20 GAUGE STAINLESS STEEL, UNDERMOUNT, 30" x 18" OVERALL. 13 1/2" x 16" x 7 1/2" INSIDE EACH BOWL WITH MOEN 8701 SINGLE LEVER FAUCET WITH 9" SPOUT AND GRID STRAINER.				
P-9	MOP BASIN; FIAT MSB-2424, MOLDED STONE BOWL MOP BASIN, 3" P-TRAP AND DRAIN, NO. 832-AA HOSE AND HOSE BRACKET, #830-AA CHROME PLATED FAUCET WITH VACUUM BREAKER PAIL HOOK, HOSE THEAD AND WALL BRACE.				
P-10	LAUNDRY TUB; FIAT FL-1 FLOOR MOUNTED MOLDED STONE SINK, WHITE WITH STEEL ANGLE LEGS, DELTA 212T DECK MOUNTED FAUCET WITH LEVER HANDLES, HOSE THREADED SWING SPOUT, GRID STRAINER WITH 1/2" TAILPIECE AND ADJUSTABLE P-TRAP, 3/8" ANGLE SUPPLY COCKS AND RISERS.				
P-11	SHOWER STALL; AKER OP-6036 ROLL-IN SHOWER, 62 1/2" L x 39 1/2" W x 78 1/2" H, ADA COMPLIANT (WITHOUT SEAT) CHROME PRESSURE BALANCE MIXING VALVE, HAND HELD SHOWER, CHROME 24" SLIDE BAR AND 60" FLEXIBLE HOSE, CHROME CURTAIN ROD, SOAP DISH, BRASS DRAIN WITH MEMBRANE CLAMP AND STAINLESS STEEL STRAINER, AND SEATS.				
P-12	WHIRLPOOL BATH; WHIRLPOOL BATHING UNIT AND ALL ASSOCIATED FITTINGS, EQUIPMENT AND ACCESSORIES SUPPLIED BY OWNER AND INSTALLED BY PLUMBING CONTRACTOR. VERIFY REQUIREMENTS.				
P-13	ELECTRIC WATER COOLER; HALSEY TAYLOR #0VL-II ER-Q, TWO-LEVEL BARRIER FREE OVAL, 7.5 GPM CAPACITY, 1/2 HP COMPRESSOR, 4.5 FLA, COLOR BY ARCHITECT.				
P-14	WASHER BOX; ZURN #WM2961-34 RECESSED PLASTIC BOX, DRAIN OUTLET, HOT AND COLD WATER CONNECTIONS.				
P-15	HOSE BIBB; ZURN #1345 FROST PROOF HOSE BIBB WITH VACUUM BREAKER, STANDARD MALE HOSE THREADS.				

BACKFLOW PREVENTER SCHEDULE							
TYPE	SIZE	DESCRIPTION	APPLICATION	HAZARD	STANDARD	MFG MODEL	REMARKS
BFP-1	3"	REDUCED PRESSURE ZONE ASSEMBLY	INCOMING SERVICE	HIGH	ASSE 1013	WATTS LF909	OS&Y
N/A	3/4"-1"	REDUCED PRESSURE ZONE ASSEMBLY	HVAC CROSS CONNECTION	HIGH	ASSE 1013	WATTS LF909	QUARTER TURN
BFP-3	3/4"-1"	REDUCED PRESSURE ZONE ASSEMBLY	DISH EQUIPMENT & COOKING EQUIPMENT	HIGH	ASSE 1013	WATTS LF909M1	QUARTER TURN
N/A	2"	REDUCED PRESSURE ZONE ASSEMBLY	COOLING TOWER MAKE-UP	HIGH	ASSE 1013	WATTS LF909M1	QUARTER TURN
N/A	3/8"	DUAL INLINE CHECK BACKFLOW PREVENTER	CARBONATED BEVERAGE & BEVERAGE DISPENSER	LOW	ASSE 1022	WATTS SD-3	--
BFP-6	3/4"	VACUUM BREAKER WALL HYDRANTS	WALL HYDRANTS FROST PROOF	HIGH	ASME 1019	WATTS HY-420	WITH HYDRANT
BFP-7	3/4"-2"	DOUBLE CHECK VALVE BACKFLOW PREVENTER	ICE MACHINES, POTABLE WATER FILTERS	LOW	ASSE 1015	WATTS LF7	QUARTER TURN

REMARKS:
1. PROVIDE BACKFLOW PREVENTER AT ALL CROSS-CONNECTIONS NOTED ABOVE AND AS OTHERWISE INDICATED ON DRAWINGS.

EXPANSION TANK SCHEDULE							
MARK	LOCATION	SERVICE	FLUID	MANUFACTURER & MODEL NO.	VOLUME	ACCEPTANCE VOLUME	REMARKS
ET-1	MAINTENANCE	HOT WATER	POTABLE WATER	ELBI DTS-80	21	18.9	1.2

REMARKS:
1. ASME RATED, 150PSI MAWP.
2. DIAPHRAGM TYPE, BUTYL-FDA APPROVED.

DOMESTIC CIRCULATING PUMP SCHEDULE											
MARK	LOCATION	SERVICE	TEMP	TYPE OF PUMP	MANUFACTURER & MODEL NO.	GPM	HEAD (FT)	POWER	HP	RPM	REMARKS
RP-1	MAINTENANCE	LOW-TEMP HOT WATER	230 °F	WET ROTOR CIRCULATOR	BELL & GOSSETT HV SERIES	6	10	120V / 1	FRAC	VAR	1.2
RP-2	MAINTENANCE	LOW-TEMP HOT WATER	230 °F	WET ROTOR CIRCULATOR	BELL & GOSSETT 100 SERIES	4	8	120V / 1	FRAC	VAR	1.2

REMARKS:
1. POTABLE WATER, NSF, LEAD FREE BRONZE.
2. ECM MOTOR, FIXED SPEED, ADJUSTABLE SPEED CONTROL, 70 WATT.

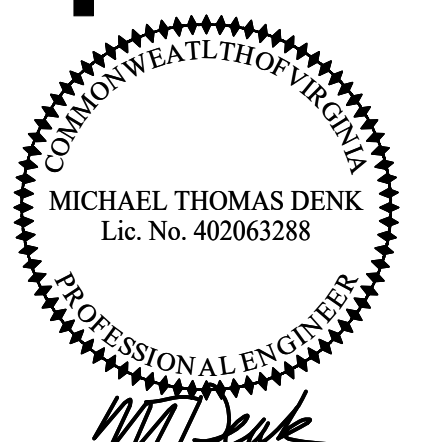
GAS WATER HEATER SCHEDULE															
MARK	SERVICE	MANUFACTURER	MODEL	TYPE	STORAGE		GAS			WEIGHT	VOLT	PH	REMARKS		
					RECOVERY	VOL	INPUT	OUTPUT	EFF.						
WH-1	FACILITY	LOCHNIVAR	SNA401-125	TANK	465 GPH	120 GAL.	399,000	--	--	--	4'0"	850 LBS	120	1	--
WH-2	FACILITY	LOCHNIVAR	SNA401-125	TANK	465 GPH	120 GAL.	399,000	--	--	--	4'0"	850 LBS	120	1	--
WH-3	FACILITY	LOCHNIVAR	SNA401-125	TANK	465 GPH	120 GAL.	399,000	--	--	--	4'0"	850 LBS	120	1	--

REMARKS:
1.

FLOOR DRAIN SCHEDULE										
MARK	TYPE	MANUFACTURER	MODEL	MATERIAL DESCRIPTION			DESCRIPTION			
				DRAIN BODY	STRAINER	SAN				
FD-1	FLOOR DRAIN	ZURN	FD-2210-PV3	PVC	NICKEL BRONZE	3"	1-1/2"	PVC BODY, ADJUSTABLE NICKEL HEAD AND STRAINER, PROVIDE WITH OPTIONAL TRAP PRIMER CONNECTION WHERE REQUIRED.		
FS-1	FLOOR SINK	ZURN	FS12-6-PV3	PVC	PVC	3"	1-1/2"	12" SQUARE, 6" DEEP PVC BODY, PVC DOME STRAINER FULL GRATE.		
HD-1	HUB DRAIN	ZURN	FD-2210-PV3	PVC	NICKEL BRONZE	3"	1-1/2"	PVC BODY, ADJUSTABLE NICKEL HEAD AND STRAINER, PROVIDE WITH OPTIONAL TRAP PRIMER CONNECTION WHERE REQUIRED.		
TD-1	TRENCH DRAIN	WATTS	LI-4-LT	STAINLESS STEEL	STAINLESS STEEL	4"	1-1/2"	REMOVABLE STAINLESS STEEL FILTER SCREENS, PERFORATED DOME BOTTOM STRAINER, 4" NO HUB BOTTOM OUTLET.		
CO	CLEAN OUT	ZURN	CO-2449	PVC	NICKEL BRONZE	3"	1-1/2"	ZURN CO2530 STAINLESS STEEL ACCESS COVER.		

LP GAS LOAD SUMMARY					
MARK	EQUIPMENT	LOCATION	QTY	INPUT EACH BTUH	INPUT TOTAL BTUH
F-1	SPLIT SYSTEM AIR CONDITIONING UNIT	NORTH WING	1	100	100
F-2	SPLIT SYSTEM AIR CONDITIONING UNIT	NORTH WING	1	80	80
F-3	SPLIT SYSTEM AIR CONDITIONING UNIT	EAST WING	1	100	100
F-4	SPLIT SYSTEM AIR CONDITIONING UNIT	EAST WING	1	80	80
RTU-1	ROOFTOP UNIT	ROOFTOP	1	130	130
RTU-2	ROOFTOP UNIT	ROOFTOP	1	80	80
RTU-3	ROOFTOP UNIT	ROOFTOP	1	120	120
RTU-4	ROOFTOP UNIT	ROOFTOP	1	150	150
MAU-1	MAKE-UP AIR UNIT	KITCHEN	1	156.4	156.4
WH-1	WATER HEATER	MAINTENANCE	1	399.9	399.9
WH-2	WATER HEATER	MAINTENANCE	1	399.9	399.9
WH-3	WATER HEATER	MAINTENANCE	1	399.9	399.9
--	KITCHEN	KITCHEN	--	561.4	561.4
D-1	DRYER	LAUNDRY	1	165	165
D-2	DRYER	LAUNDRY	1	165	165
D-3	DRYER	LAUNDRY	1	22.5	22.5
TOTAL					3,110

NEW 90 BED SKILLED NURSING FACILITY
SMITH MOUNTAIN LAKE HEALTH & REHAB CENTER
STATE RTE 616
MONETA, FRANKLIN COUNTY, VIRGINIA



DSCA PROJECT NO. 23.046

P6.1